

Enable Express

September 2022



enable
Inspired Care.
New Possibilities.

*Enabling Adults with Intellectual and Developmental
Disabilities in New Jersey since 1989.*

Summer Fun!

Despite the heat, this summer has been full of fun activities and events for our consumers!

Keep reading to see what we've been up to!

Roszel Café Tour

There's no place cooler than a dessert parlor! To escape the summer heatwave, staff and consumers from our Roszel Day Program took a trip into town and spent the afternoon at Thomas Sweet Café, where they watched a cake decorating demonstration and enjoyed handmade ice cream and frozen yogurt topped with sweet treats.



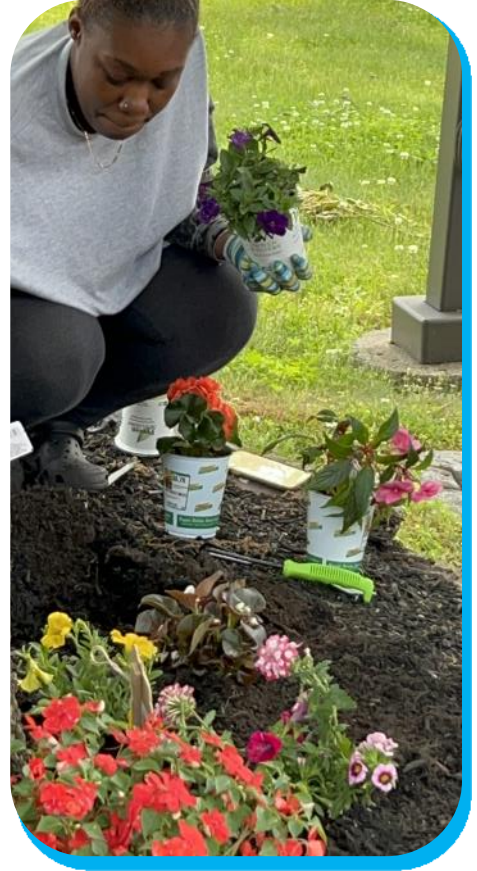
Trip to the Morris Museum

Our consumers took a trip to the Morris Museum where they looked at many exciting exhibits during a guided tour. Afterwards, they engaged in hands-on activities offered by the museum.



Gardening at Fusion-Loeser

Not all of Enable's summer activities were indoors! Consumers in our Fusion-Loeser Day Program wanted to add a pop of color to the empty flower beds outside of the program. So, when the weather wasn't too hot, consumers and staff put on gardening gloves and got to work laying out topsoil and planting an array of beautiful flowers.



Fusion Baking Class



This summer, consumers in our Fusion Day Program learned how to bake cupcakes!

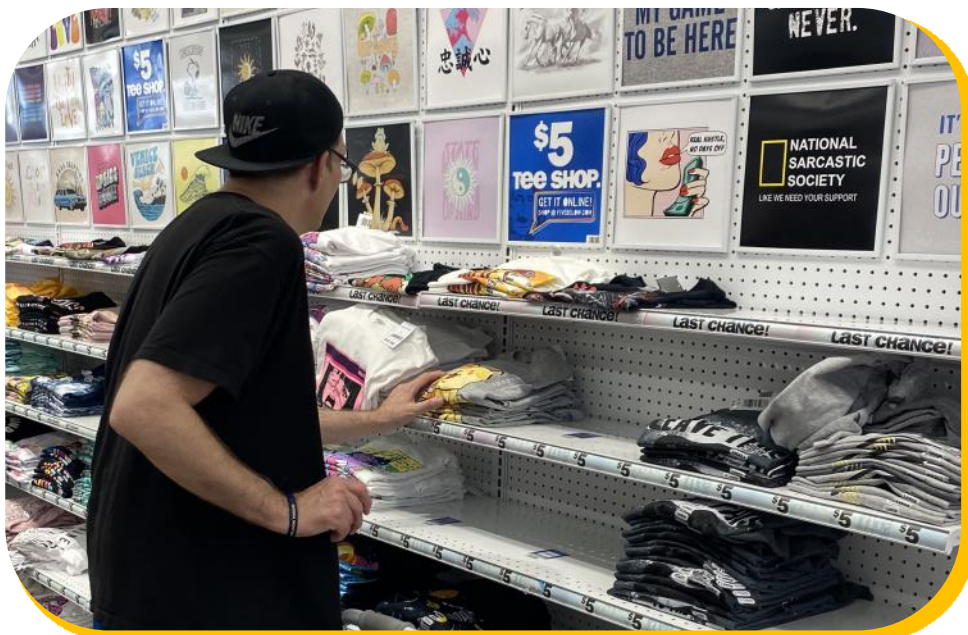
From shopping for the ingredients to mixing up cake batter, consumers learned the step-by-step process of baking cupcakes, each taking a turn cracking eggs, mixing the batter, and lining the cupcake tins.

After the cupcakes were baked and cooled, the consumers had fun personalizing the cupcakes by adding colorful frosting and sweet decorations.

Shopping at 5 Below

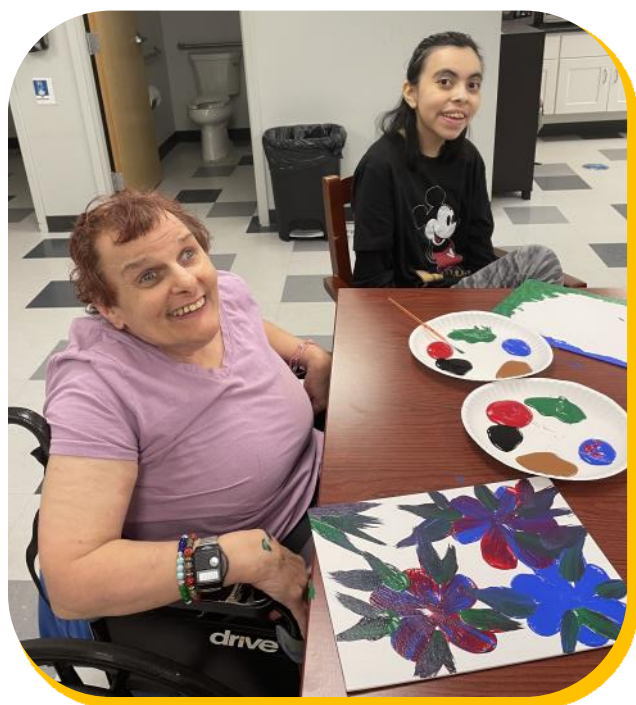


Some of our consumers went shopping at 5 Below, where they learned money management skills by shopping for snacks, clothes, and other goodies!



Paint Party!

Roszel Day Program hosted a painting party where some consumers painted flowers while others experimented with different colors.



Food Truck Fun!

This summer sweet and savory food trucks visited our Roszel and Fusion-Loeser Day Programs as a treat for our staff and consumers.

Mr. Softee, a huge hit among the consumers, even made a return visit and our staff and consumers enjoyed ice-cream on a warm, sunny afternoon.



In Memoriam



Bette Keppler

August 23, 1951 — June 18, 2022

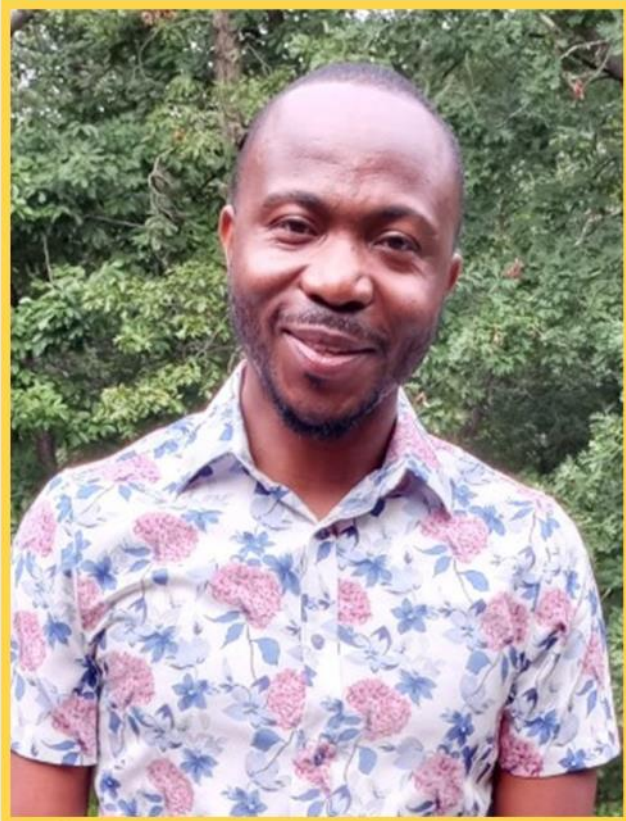
Beloved Daughter, Sister, Aunt & Cherished Enable Family Member

Enable had the privilege of serving Bette in our residential program from May 1992 up until her passing in June of this year.

A princess at heart, Bette loved Disney trips with her best friend, Denise. And although she couldn't speak, Bette made sure that the world knew she was a princess and brought light and laughter to our group homes.

She is forever in our hearts.

NJACP HERO



Enable's NJACP 2022 Hero
STANLEY DUO



THANK YOU
for GOING ABOVE & BEYOND
for the individuals we serve!

Stanley Duo has been with Enable since October 28, 2019. He was hired as a DSP at Project Freedom where he worked one-on-one with individuals.

During the COVID-19 pandemic, Stanley always jumped into action when needed in our group homes. He even attended additional trainings to ensure he was certified to cover shifts in any group home when needed.

In March 2022 Stanley was promoted from DSP to Team Lead at one of our specialized Group Homes. He continues to support our other homes when he is not on shift and we appreciate his strong work ethic! Stanley continues to go above and beyond for the individuals he serves.

Thank you, Stanley, for all you do!
Enable is lucky to have you as part of our team!

Consumer Highlight

Carolina Lopez



Carolina Lopez is an artist in Enable's residential and Roszel Day Program, and she has a passion for painting and drawing!

Carolina helps constructing seasonal bulletin boards in the day program, creating a festive atmosphere for each holiday.

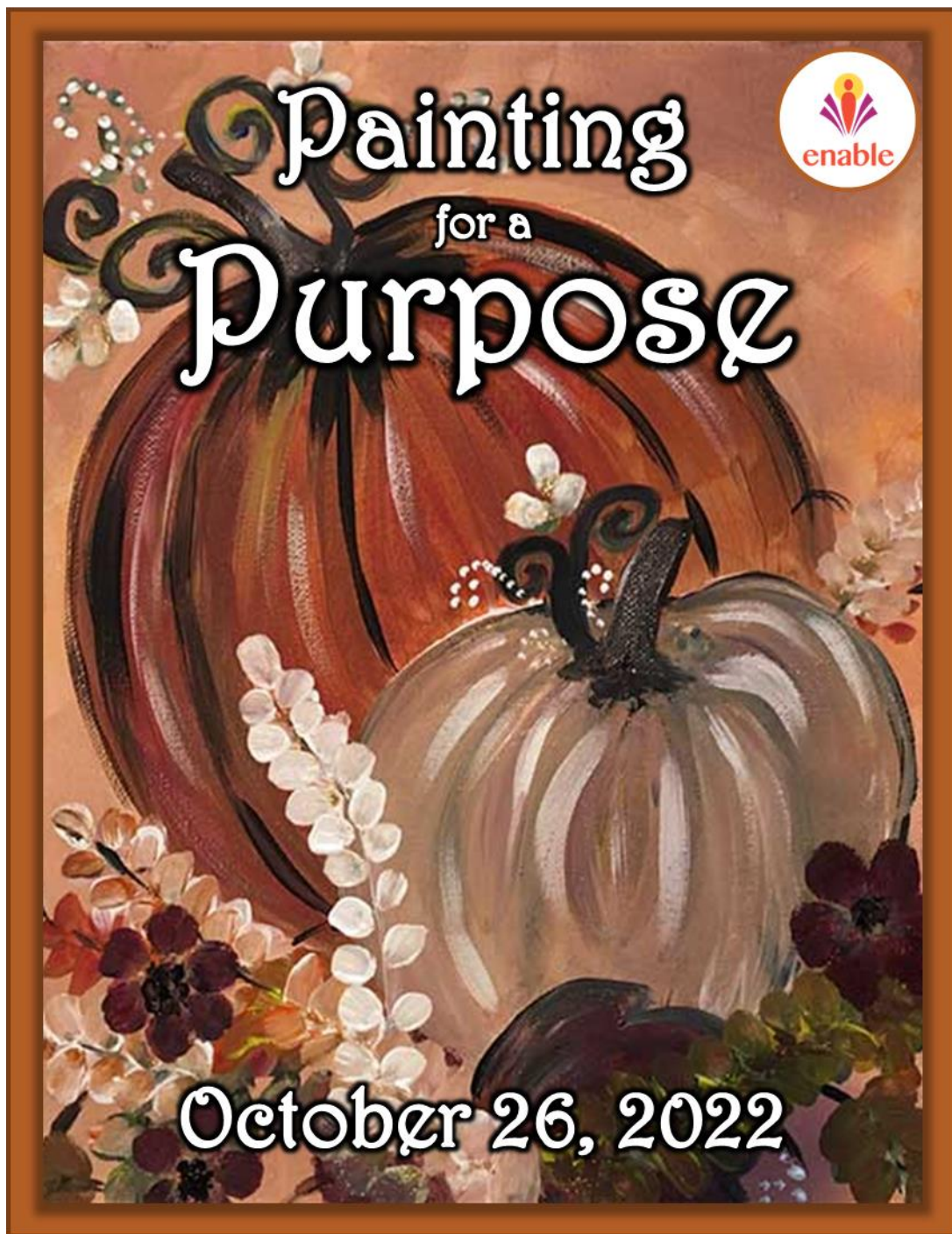
Her art also decorates many staff offices at our headquarters and in our group homes, giving these spaces a bright pop of color.

Carolina's unique art style adds an exciting energy to our offices and programs, and we can't wait to see what she paints next!



Way to go, Carolina!

Paint Night



Wednesday, October 26

Light dinner at **5:00 pm** | Painting starts at **6:00 pm**

Join us for a night of food and fun! Purchase tickets by **October 20!**

[Click here](#) to purchase your ticket!

Healthy Recipes



One-Pot Tomato Basil Pasta

Ingredients...

8 ounces whole-wheat rotini
1 cup water
2 cups low-sodium chicken broth
1 (15 ounce) can no-salt-added diced tomatoes
2 tablespoons extra-virgin olive oil

1 ½ teaspoons Italian seasoning
½ teaspoon onion powder
½ teaspoon garlic powder
½ teaspoon salt
¼ teaspoon crushed red pepper
6 cups baby kale or baby spinach
½ cup slivered basil
Grated parmesan cheese

Directions... **COMBINE** pasta, water, broth, tomatoes, oil, Italian seasoning, onion powder, garlic powder, salt and crushed red pepper in a large pot. **COVER** and bring to a boil over high heat. **UNCOVER**, reduce heat to medium-high and cook, stirring frequently, for **10 minutes**. **STIR** in kale and cook, stirring often, until most of the liquid has been absorbed, **5 to 7 minutes** more. (If using spinach, add it after about **10 minutes**, so it cooks in the remaining **2 to 3 minutes**.) **STIR** in basil. **GARNISH** with parmesan, if desired. **Serves 4**.

Blueberry-Lemon Ricotta Pound Cake

Ingredients...

¾ cup granulated sugar
5 tablespoons unsalted butter (room temp)
3 large eggs (room temp)
¾ cup part-skim ricotta cheese
2 tablespoons lemon zest

3 tablespoons lemon juice
1 teaspoon vanilla extract
1 ½ cups white whole-wheat flour
2 teaspoons baking powder
½ teaspoon salt
2 cups fresh blueberries
2 tablespoons confectioner's sugar

Directions... **PREHEAT** oven to **350 degrees F**. **COAT** a 9-by-5-inch loaf pan with cooking spray and line the bottom with parchment paper.

BEAT ¾ cup sugar and 5 tablespoons butter in a large bowl with an electric mixer on medium-high speed until creamy. **BEAT** in 3 eggs, one at a time, until fully incorporated.

REDUCE the mixer speed to medium-low and beat in ¾ cup ricotta, 2 tablespoons lemon zest, 2 tablespoons lemon juice and 1 teaspoon vanilla until just combined.

SPRINKLE 1 ½ cups flour on top, then evenly sprinkle 2 teaspoons baking powder and ½ teaspoon salt over the flour. With the mixer on low speed, **BEAT** until almost combined.

ADD 2 cups blueberries and gently fold into the batter.

TRANSFER to the prepared pan. **BAKE** the cake until it starts to brown around the edges and a toothpick inserted in the center comes out clean, **about 1 hour**.

LET COOL in the pan on a wire rack for **20 minutes**. Run a knife around the edge to loosen the cake, then invert it onto the rack. Carefully turn it right-side up. Let cool completely.

CLEAN the bowl, **ADD** 2 tablespoons confectioner's sugar and whisk in the remaining 1 teaspoon lemon juice until smooth. **BRUSH** the glaze on the cake and serve immediately.



In Other News

College Triumph!



As summer comes to an end, many college freshman like Kate Jones of Lambertville, NJ, are moving into their college dorms.

Kate, a freshman at the Manhattan School of Music, is studying musical theater, pursuing her passion for singing and acting. But unlike many of her peers, college wasn't always a certainty for her future.

At 8 years old, Kate was diagnosed with autism spectrum disorder and

her mother, Laura Jones, was told by a member of Kate's child study team to "forget about college" and was repeatedly told by early childhood educators that Kate would struggle to succeed in life.

Even if college wasn't a possibility for Kate's future, Jones was determined to help Kate succeed and reach her full potential.

And Kate proved those educators wrong and made her mother proud when she unpacked her bags in her dorm room, preparing for the upcoming semester.

Kate is an inspiration and proves that anyone with autism spectrum disorder can go to college and pursue their passions.

"She's following her dream. It's joy. It's just joy and pride."

Laura Jones

[Click here to read more about Kate's journey to college!](#)

Enable joins Special Olympics!

SPORTS, FRIENDSHIP, TEAMWORK, AND PERSONAL PRIDE!

***Special
Olympics***



Enable continues to support and encourage healthy lifestyles for our consumers, and participating in Special Olympics is a great way to get our consumers involved in activities centered on sports, friendship, teamwork, and personal pride!

Every county in New Jersey has a location for Special Olympics events, and these events will provide our consumers opportunities to engage with the community.

Special Olympics offers an exciting variety of seasonal sports for people of all abilities!



Fall

Cycling
Equestrian
Flag Football
Golf
Soccer
Triathlon



Winter

Alpine Skiing
Cross Country Skiing
Figure Skating
Floor Hockey
Snowboarding
Snowshoeing
Speed Skating
Volleyball



Spring

Basketball
Bowling



Summer

Bocce Ball
Gymnastics
Powerlifting
Softball
Swimming
Tennis
Track and Field

Although the summer season is over, there are plenty of Special Olympics events to look forward to this fall!

*Join us in cheering on our consumers
to the finish line!*

We're Hiring!

- *Competitive pay*
- *401K with employer match*
- *Generous PTO policy*
- *Credit union membership*
- *Health plan & HRA*
- *Dental*
- *Vision*
- *Employer paid life insurance*
- *Life Assistance Program (LAP)*
- *Supplemental benefits*
- *Training*
- *Promotions from within*

Direct Support Professional (DSP) — Full-Time, Part-Time, Sub Per Diem

- The Direct Support Professional develops a relationship with our consumers so they feel safe and supported. Responsibilities will include, but are not limited to: supervision and guidance during skill building activities, assisting with daily living activities, such as preparing meals and personal hygiene, providing transportation to medical appointments and other scheduled outings in the community, ensuring the safety of consumers at all times, and logging and updating resident case notes on a daily basis.

Team Lead — Full-Time

- The Team Lead works with a person-centered team to develop, implement, and coordinate supports that address the needs and interests of consumers and assists them in safely reaching their personal goals for skill development and community integration. This position is a direct care role in addition to leadership responsibilities and providing assistance to the manager, particularly when the manager cannot be present. Responsibilities include but are not limited to: ensuring high quality care is provided to residential and day service participants and facilitating community activities, sensory integration, recreation, and daily living skills training. The Team Lead models behavior for the other staff so they can work effectively with consumers.

Job Coach — Full-Time

- The Job Coach will work within a community-based employment setting to assist in supervising and training individuals with intellectual and developmental disabilities on how to acquire the physical, intellectual, emotional, social, and hard skills needed for successful employment. Responsibilities will include, but are not limited to: assisting individuals placed in competitive employment maintain employment, teaching, reinforcing, and improving essential skills such as developing a resume, conducting a successful job interview, and completing a job application, communicating the employee's progress, and identifying and solving work related issues.

Residential Manager – Full-Time

- The Residential Manager works with a person-centered team to develop, implement, and coordinate supports that address the needs and interests of consumers and assist them in safely reaching their personal goals for skill development and community integration. The Residential Manager plans and coordinates all activities, manages the daily schedule, and ensures the space used is adequately furnished and supplied with materials and equipment to facilitate independent living. Activities will include community activities, recreation, and daily living skills training. The Residential Manager will ensure staff work to help participants reach their goals and receive training as needed to effectively work with consumers. The Residential Manager is responsible for ensuring that the group home operates within the policies and procedures of the agency and meets licensing and accreditation standards.

Behaviorist – Full-Time

- Under the direction of the Vice-President of Clinical Services, the Behaviorist works directly with consumers and staff at Enable to assess and evaluate the behavioral management needs of persons we serve. The Behaviorist meets with consumers as assigned to develop and implement Behavior Support Plans (BSP). The Behaviorist regularly reviews and revises the BS and trains staff directly working with the consumer to implement the BSP. The Behaviorist compiles internal and external reports as required, acts as a member of a team addressing significant behavioral and/or medical changes in consumers, and may be available by phone when emergencies occur. The Behaviorist maintains comprehensive notes and tracking records as required and ensures program records are properly maintained and reports are prepared and submitted on time, including but not limited to, time and attendance and electronic case records.

Supervisor of Behavioral Services – Full-Time

- Under the direction of the Vice-President of Clinical Services, the Supervisor Behavioral Services will oversee and supervise the Behaviorists. The Supervisor Behavioral Services will also carry a specialized caseload and work directly with consumers and staff at Enable to assess and evaluate the behavioral management needs of persons we serve; develops behavioral prevention and intervention plans; and trains staff in successful implementation of the plans. This position will assist with crisis intervention, through on-call availability and possibly in person support. The Supervisor Behavioral Services will also be involved with specialized training for new hires and other specialized programs within Enable.

Quality Assurance Specialist – Full-Time

- Under the direction of the Director of Quality Assurance will assist in implementing all of Enable's quality assurance efforts. The QA Specialist is responsible for activities involving quality assurance and compliance with applicable regulatory requirements. These activities include but are not limited to: data collection, analysis of data, preparation of reports, conducting investigations, providing support to the Safety Committee, assisting with revisions to quality assurance efforts, providing data and reports that portray accomplishment of levels of service and other performance indicators. The QA Specialist will assist programs in preparing for licensing and accreditation standards inspections. Assists with educating staff on applicable quality topics.

Utilization Review Specialist – Full-Time

- Under the direction of the Consumer Data Base Coordinator the Utilization Review Specialist conducts utilization reviews to determine if consumers are receiving appropriate treatment. Review treatment plans, authorizations, and status of approval from payers. Collects and compiles data as required and according to appropriate policies and regulations. Consults with operational, clinical and finance teams as needed. Knowledge of Intellectual and Developmental Disabilities regulations and CMS.

Recruiter – Full-Time

- Under the direction of the Recruiting Supervisor, the Recruiter is responsible for the day-to-day recruitment processes to fill the staffing needs of the agency. The Recruiter is responsible for cultivating working relationships with relevant internal and external parties to identify areas of need and to determine the best course of action to meet those needs. The Recruiter is responsible for maintaining accurate & relevant recruitment data and reporting it to the appropriate Enable parties on an ongoing basis.

Join Our Team Today!



CALL (609) 987-5003

EMAIL recruitment@enablenj.org

VISIT www.enablenj.org/careers/



Inspired Care. New Possibilities.

*We are extremely grateful for your continued support
and for making our programs possible!*

Support Enable, Inc.

When you shop at smile.amazon.com,
Amazon donates.

[Go to smile.amazon.com](https://smile.amazon.com)



Please consider making any future Amazon purchases through our Amazon Smile account by clicking the button to the left.

Amazon will donate 0.5% of the cost of all eligible items purchased through our Amazon Smile account back to our organization.

Stay Connected!



CALL (609) 987-5003 or VISIT www.enablenj.org