



Fine Arts Upcoming Events

DECEMBER

12/01 — Jingle Bell Celebration
12/06 — “Light the Night” at Magnolia Manor

JANUARY

1/07— Elevate Debate @ Bolles School
1/12 — The Fifth Grade presents *Frozen, Jr.*

FEBRUARY

2/15 — The Fourth Grade presents *Annie, Jr.*
2/21-2/24 — Ellen Fleming Artist: Lloyd Buchanan Residency

MARCH

3/16 — GISA AAA Literary Meet
3/30, 3/31 — MS/US Musical *Legally Blonde*

APRIL

4/18 — International Thespian Honor Society Induction
4/21 — MS/US Spring Concert
4/28— May Day Celebration

Thank You

Friends and Family of our Cast and Crew

THANK YOU FOR YOUR SUPPORT OF THE FINE ARTS AT FREDERICA ACADEMY

PLAYBILL



Presented by
International Thespian Troupe #8989
November 17 and 18—7:00 PM
Hamilton Hall
Frederica Academy

CLUE (HIGH SCHOOL EDITION)

Adapted from the screenplay by Jonathan Lynn

Written by Sandy Rustin, with additional material by
Hunter Foster and Eric Price

Original music composed by Michael Holland

*Based on the Paramount Pictures Motion Picture
which was inspired by the
Hasbro Board Game CLUE*

*Produced by Special Permission With Broadway
Licencing, Inc.*

**VIDEOTAPING, VIDEO PHOTOGRAPHY, OR
AUDIO ARE STRICTLY PROHIBITED.**

Please silence your mobile devices.

*Sensitivity warning: The sound of toy gunshots is
heard in the play.*

~ International Thespians Society ~



**INTERNATIONALSM
THESPIAN SOCIETY**

HONORING STUDENT ACHIEVEMENT IN THEATRE

The International Thespians Society (ITS), founded in 1929, is an honorary organization for high school theatre students. The mission of ITS is to honor student achievement in the theatre arts. ITS is a division of the Educational Theatre Association (EdTA).

To become a Thespians, a student must earn an initial 10 points, or the equivalent of 100 hours of high quality theater work either on or off stage. Students may start earning points in 8th grade. Thespians continue to grow in the program by earning stars and bars.

**For helping us create Boddy Manor
with special props and effects, we
would like to thank**

Safe Harbor Center

The Johnston Family

The Barger-Spiers Family

Rummage Store

Norcosto, Inc.

Anthony Stubelek, Audio and Lighting Engineer, AV East, LLC

Laura Edenfield, Artist

The Island Players

Melanie Barger, Artist (Founding Arts Hall of Fame Member)



~ MEET THE CREW ~



☆**Margaret Spiers**, '22, Set Designer

National Honor Student Margaret has many artistic talents on and off the stage. Her beautiful set designs grace the Hamilton Hall Stage, and she assists with events and productions at her church as well. Margaret is a member of the Debate club, and has competed at GISA and Elevate Debate events. As a public speaker, she is a member of Model UN, a Speech Event performer, and a specialist in monologues and duo pieces. Margaret is a dedicated player on the Varsity Girls'

Basketball team.



Kyler Alexander, '26, Assistant Stage Manager

A dancer and artist with an interest in costume design, Kyler was last seen on the Hamilton Hall Stage as a 'Debutante' in *Little Women* and in *The Little Mermaid, Jr.* Kyler also plays basketball and volleyball, and was on FA's Cheer Team. She is a member of the Model UN and Knightingales, and would like to dedicate this performance to her family.



Ruth Kelley, '26, Crew / Script Assistant

Ruth is a creative member of the theater technical crew and lends her expertise in organizing and problem solving backstage. Ruth's favorite subject is Math, and she also enjoys participating on the girls' softball team. We are thrilled to have Ruth on the stage team as well.

A Special Thank You

Scott Hutchinson

John Pope

Sandi Channell

Michael Temple

David Nelson

Trey House

Brad Hutcherson

Reece Wisner

Michele Meyer

Michelle Clifton

TIME

The year is 1954, the location is not too far from Washington, D.C. It's just before dinner on a dark and stormy night.

PLACE

Boddy Manor—A mansion of epic proportions and terrifying secrets.

ACT I

Meet The Players. Various Rooms In Boddy Manor.
Let The Game Begin.

~ a pause~

ACT II

Searching The Manor. Danger Ensues.
The Suspects & The Reveal.

CAST

☆Case Harrison, '23.....	COLONEL MUSTARD
☆Wyatt Whitlow, '24.....	PROFESSOR PLUM
☆Brooke Lewis, '25	MISS SCARLET
Ani DeHavillande, '26.....	MRS. PEACOCK
Isabella Speight, '27.....	MRS. WHITE
☆Emily Wyrick, '25.....	MISS GREEN
Wells Dixon, '28.....	MR. BODDY
☆Lea Maye Smith, '25	WADSWORTH
Brianna Osteen, '28.....	YVETTE
Faye Flagstad, '29.....	THE COOK
Olivia Helms, '27.....	THE MOTORIST / SWING
Greer Flagstad, '29.....	SINGING TELEGRAM GIRL
Davene Dixon, '28.....	OFFICER LACEY
Gianna Baker, '29.....	FBI AGENT HART / SWING

CREATIVE TEAM

☆Sydney Carroll, '23.....	SENIOR STAGE MANAGER
☆Paul Kaselak, '23.....	STAGE TECHNICIAN
☆Margaret Spiers, '24.....	SET DESIGNER
Ani De Havillande, '26.....	STAGE MANAGER
Kyler Alexander, '27	ASSISTANT STAGE MANAGER
Ruth Kelley, '27.....	CREW / SCRIPT ASSISTANT

☆ Indicates member of International Thespians Troupe #8989

DIRECTORS

Artistic Director: Dr. Tess Nielsen

Audio Engineers: Anthony Stubalek, AV East Studios

Rehearsal Assistant Director: Reece Wisner

~ MEET THE CAST ~



Greer Flagstad, '28 (Singing Telegram Girl)

A dancer and vocalist, Greer was last seen on Hamilton Hall Stage as 'Bird Woman' in *Mary Poppins, Jr.* Greer is a competitive dancer with the Southern Strut Dance Company. Her favorite style of dance is tap. Greer's favorite subject is English and she very much enjoyed cheering during the Fall season. Greer dedicates this performance to her loving family.



Gianna Baker, '28 (Secret Agent Hart)

Newcomer to Hamilton Hall Stage, Gianna is ready to share all of her talents. She loves to sing and recently performed in the Open Mic Night. Gianna loves sports and her favorites are golf and basketball. In theater, Gianna loves backstage tech just as much as her onstage roles. She was a great stand-in during the rehearsals and helped all the actors during the rehearsal process, Gianna's favorite subject is English. She dedicates this performance to her older sister Gabby, 21, who is studying at Indiana University.

~ MEET THE CREW ~



☆Sydney Carroll, '23, Stage Manager

President of Troupe #8989, and an all-around arts student, Sydney enjoys being on stage, off stage, and behind the camera. As a digital artist, she recently won two Silver Medals for photography in the Scholastic Arts and Writing Competition. Sydney serves on the Yearbook staff with a specialty in design. She is Vice-President of the Debate team, and her specialty is Informative Speech and Declamation events. She recently competed at GISA State Literary in Duo Interpretation. Sydney plays tennis, and is a member the Cultural Awareness Club and the FCA.



☆Paul Kaselak, '23, Audio and Lighting Production

Paul is a productions and communications specialist and is often behind the camera or at the lightboard at events and concerts. A 2-year member of The Thespian Honor Society, Paul holds the position of Liaison between the school's arts service organization. He often uses his technical expertise to help community service organizations stage and produce their events as well.

~ MEET THE CAST ~



Brianna Osteen, '27 (Yvette)

Newcomer to Hamilton Hall Stage, Brianna enjoys many artistic pursuits, such as creative writing, playing the piano, singing, and using her creativity in Makerspace activities. Brianna also enjoyed Karate, and has already earned a provisional yellow belt. Brianna would like to dedicate this performance to her MiMi and Pa.



Faye Flagstad, '28 (The Cook)

Most recently scene in the role of 'Mary Poppins,' Faye is a multi-talented singer-dancer who loves to perform in any setting. At school Faye sings with the Knightingales ensemble, and off campus, dances with Southern Strut Dance company in their competitive performance troupe. Faye also enjoys sports and is a member of the Middle School Cheer Team and Soccer Team. Faye dedicates this performance to her supportive family.



Olivia Helms, '26 (Michelle the Motorist)

Singer-Actor Olivia has previously appeared on Hamilton Hall stage as 'Rodrigo' in *Little Women* and as 'Sebastian' in *Little Mermaid*. She enjoys backstage production just as much as being under the spotlights, and loves to help the younger students. Olivia sings with the 8th Grade Popular music ensemble and the Knightingales. Additionally, Olivia participates in community service both on and off campus, and is on the Cheer and Softball teams.



Davene Dixon, '27 (Officer Lacey)

This is Davene's first stage role and she's enjoying it! Davene also plays soccer and tennis. Her favorite subject is History. She's a triplet, and her brother Wells is also in the cast. Davene would like to dedicate this performance to her mom and dad.

~ DIRECTOR'S NOTES ~

With over 300 productions across the United States in the '22-'23 season, Sandy Ruskin's stage adaptation of the hit film *Clue* was named by the American Theatre Association as one of the nation's most produced plays. Based on the 1985 Paramount movie and inspired by the classic Hasbro game, *Clue* is the ultimate *whodunit* mystery.

The story begins in Boddy Manor, where six mysterious guests assemble for an unusual dinner party. Blackmail is on the menu! When their host, Mr. Boddy, turns up dead, all of the guests become suspects. Led by Wadsworth, the housekeeper, and her staff of Yvette and Cook, all of the guests—Miss Scarlet, Professor Plum, Mrs. White, Mr. Green, Mrs. Peacock and Colonel Mustard—race around to find the killer.

Clue, the board game, is still as popular today as when it was first played in 1949. The main objective of the game is to figure out the murderer, the weapon, and the room. The original game, called "Cluedo," was created in 1944 by Anthony Pratt, a British National who invented the game to pass the time during World War II air raids. Pratt sold the game to the Parker Brothers in 1949. It has been said that the game's popularity was bolstered by the Agatha Christie novels of the time. In the years that followed, game play has remained primarily unchanged.

In 1994, Hasbro bought *Clue* from the Parker Brothers and dramatically rebranded it, adding new weapons, characters, and scenarios. Since the late nineties, the *Clue* brand continued to grow. In 1997, "Clue the Musical" and "The Mystery Café" were launched, both shows ran for several years on Broadway.

Truth be told, I was hesitant to produce this play. While I love to play *Clue* with my family, I did not think it was a good idea to indulge in so much comedic violence on stage. However, when we read the script in class last year, it was funny, intriguing, and the story resonated with the playful personalities of the students who loved the *Clue* characters. Also, there has been a resurgence in the fantasy-world murder mystery genre, with many streaming series, podcasts, and young adult fiction novels turning to this genre with a new twist. It's no wonder the play was a favorite among the students. The approach we took with our production was to gamify the story with larger than life characters, wacky action, and silly stage trickery.

Clue is a fun game, and a compelling mystery to for the audience to solve. It's not surprising that *Clue* has retained its' popularity for family fun after 70 years.

~ MEET THE CAST ~



★ **Case Harrison, '22** (Colonel Mustard)

National Honor Student Case Harrison is Vice President of Troupe #8989. He's been acting since 5th grade. Some of his most memorable roles include 'Davie' in *Newsies*, 'Uncle Walt' in *The Blue and the Grey* and 'John Brooke' in *Little Women*. Case serves as Host for Open Mic Nights and has performed with the Popular Music Ensemble. He was Region Finalist for GISA Literary, and has received awards for his photography, creative writing, and filmmaking. Case has also participated

in The Island Players and Ritz Theater summer programs. He aspires to continue his creative pursuits in college.



★ **Wyatt Whitlow, '23** (Professor Plum)

As an actor, Wyatt plays numerous roles, often taking on more than one role in any given play. On the Hamilton Hall Stage, he has been seen in *Mamma Mia* as 'Harry Bright,' 'Mr. Lawrence' in *Little Women*, as 'Oscar' in *Newsies*, and played several characters in the short play *Hoodie*. Wyatt participates in Model UN. He is a 3-star member and the Liaison of Thespian Troupe #8989. Wyatt is a National Honors Student who aspires to study medicine in college. He is taking flight lessons in pursuit of his

pilot's license.



★ **Brooke Lewis, '24** (Miss Scarlet)

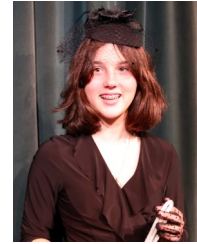
Multi-talented Brooke sings with the Popular Music Ensemble and is also a specialist in live music production. Backstage, Brooke has a specialty in hair and make up design as well as set production. She's been acting in plays since her 5th Grade performance in *Willy Wonka, Jr.* Brooke lends her production talents to many school and community events by assisting with live sound performance and stage and theater management.



★ **Ani DeHavillande, '25** (Mrs. Peacock)

A newcomer to Hamilton Hall Stage, Ani enjoys creative writing, art, and theater production. While Ani began her *Clue* adventures as Stage Manager, she quickly found her way into the cast and is loving the experience. This is Ani's first major acting role. Ani is an honors student who enjoys literature, the arts, community service, and a combination of creative pursuits that bring together her love of culture and creativity.

~ MEET THE CAST ~



★ **Isabella Speight, '26** (Mrs. White)

This is Isa's first full length feature role. Isa is a member of the 8th Grade Popular Music Ensemble. She is a multi-instrumentalist who plays the bass guitar and is now learning to play drums. Off stage, Isa loves sports and participates in community service. She is a member of the softball team. She brings a sense of wit and wisdom to the character of Mrs. White.



★ **Emily Wyrick, '24** (Miss Green)

Thespian Emily loves singing, acting and performing in any genre. Her previous stage roles include "Eddie" in *Mamma Mia*, 'Mrs. Kirk' in *Little Women*, 'Mrs. Luce' in *Little Shop of Horrors* and 'Veruca Salt' in *Willy Wonka*. Emily has also performed with the Island Players. She is a member of Model UN, Debate Club, Science Bowl, the Knightingales, and is an avid tennis player. Emily also loves songwriting. As an accomplished public speaker, Emily competed at Incubate Debate and

GISA State Literary in the impromptu speaking event. This year, Emily was elected to serve on the Honor Council.



★ **Wells Dixon, '27** (Mr. Boddy)

This is Well's first acting role. Wells participates in Cross County, Soccer, and is a member of the Digital Broadcasting reporting team (Fred Facts). His favorite subject is History because he's good at remembering facts and details. Wells is a triplet, and his sister Davene is also an actor in this play.



★ **Lea Maye Smith, '24** (Wadsworth)

Multi-talent Lea Maye just returned from Washington DC from appearing with the All-National Modern Band. As a singer and multi-instrumentalist, Lea Maye is a member of the Popular Music Ensemble. Last year, she played "Sophie" in *Mamma Mia*, and has previously played 'Beth' in *Little Women*. Lea Maye is active in many school and community programs, including Model UN, the Knightingales, the Penguin Project at the Ritz Theater, and as a Church Youth Music

Leader. Most recently, she was named State Runner-Up for GISA Vocal Solo. Lea Maye serves as Secretary of the Thespians and Co-Editor of the *Oracle* Literary Magazine.