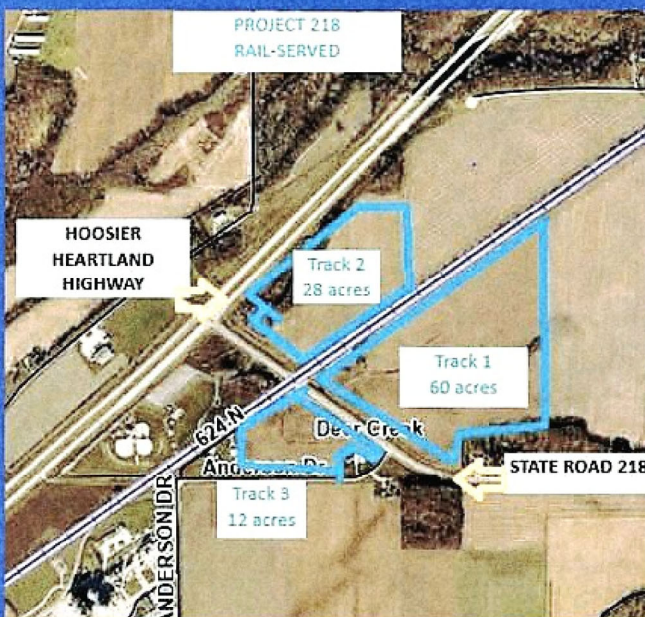




INDUSTRIAL LAND FOR SALE - RAIL SERVED

PROJECT 218

This industrial location features multiple parcels (12-100 acres) with rail access provided by Norfolk Southern, which includes a 60-acre parcel and two smaller tracks. It's situated adjacent to the Hoosier Heartland Highway and near SR 218, offering easy access to major highways and a Class 1 short-line rail.



Project 218 rail-served plot aerial view.

JNT FARMS

Located in Camden, IN, this 89.9-acre property has rail access on its west side, with Genesee & Wyoming Railroad Services Inc providing potential siding options. It's part of the Duke Energy Site Readiness Program and offers various incentives for potential buyers.



JNT Farms rail-served plot.

*These sites offer rail access through short-line railroads and are strategically located near major highways, including the new Hoosier Heartland Corridor and I-65.