



Strategic Ohio Council for Higher Education

Partners in Developing Workforce

Cassie Barlow

cassie.barlow@soche.org

Oct 2024



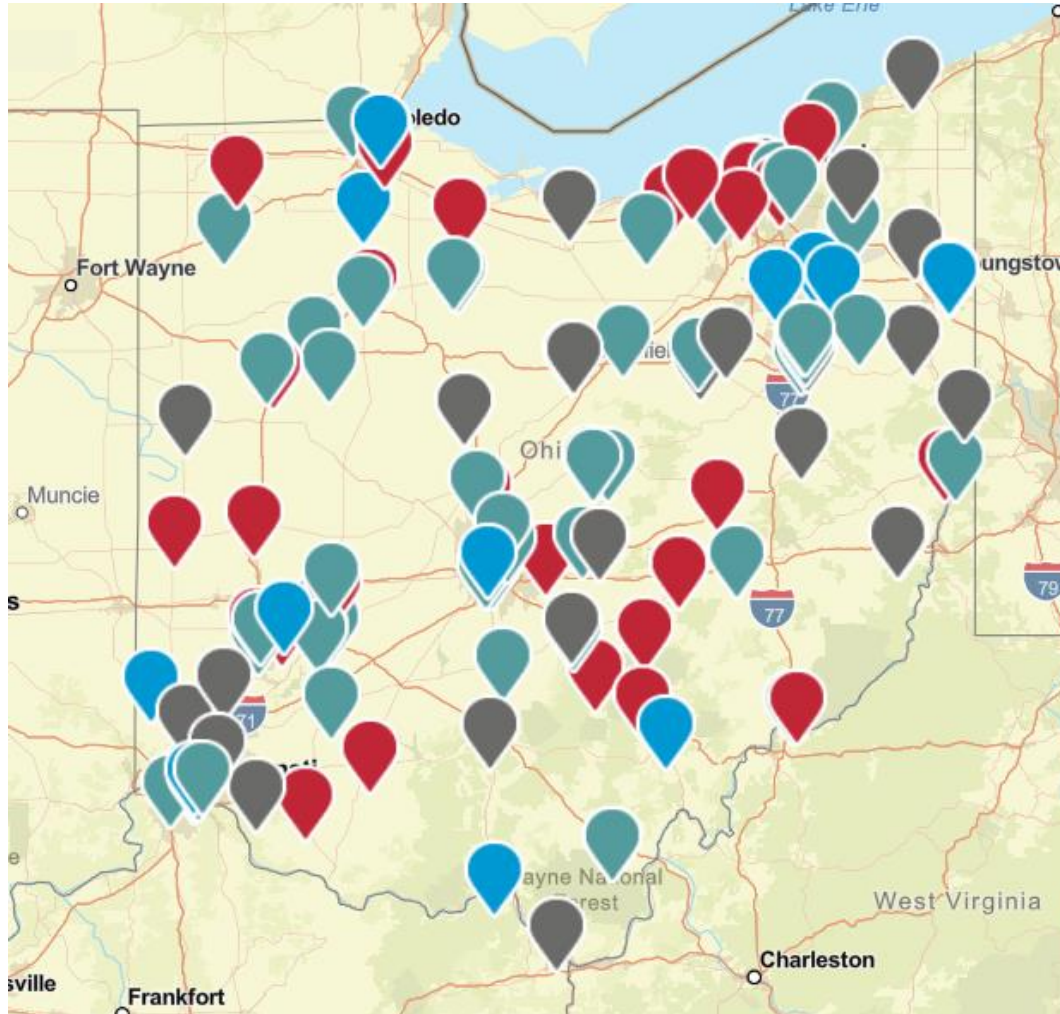
SOCHE Overview

Non-profit founded in 1967 SOCHE, focused on **engaging** with colleges, universities, K-12, and industries to transform the economy through **education and employment**.

Annually, employs hundreds of interns (High School through Postdoctoral) in businesses of all types to include government agencies.



College and University Partners



- **128 Partners**
 - 2 Year
 - 4 Year
 - Private
 - Public
 - Independent



K-12 and Industry Partners



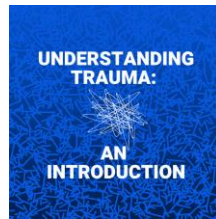
- 300+ K-12 School Districts
- 400+ Employers
 - Tech
 - Manufacturing
 - Skilled Trades
 - Healthcare
 - Defense
 - Aerospace
 - Supply Chain
- Across the State



SOCHE Portfolio

Professional Development

Workforce Development



Councils & Committees

SOCHE Webinars

Vision: An educated, employed, and engaged citizenry

High School
+
College Students
=
Tomorrow's
Workforce



Cross Registration





Strategic Ohio Council for Higher Education

ANNUAL IMPACT 2024

TO LEARN MORE,
CONTACT
SOCHE TODAY!

(937) 258-8890

soche@soche.org



www.SOCHE.org

COMMUNITY

\$7.5
BILLION

Impact on Economy

30+
THOUSAND

Degrees & Certifications

200+
THOUSAND

Students Enrolled

EMPLOYERS



300+ Companies Served

3,000+ Job Seeker Résumés

10,000+ Veterans Served

2,000+ Student Intern
Applications

STUDENTS



300+ High School Students
Employed

200+ College Students
Employed

\$2M Student Wages

70% Offered Full Time Jobs

HIGHER EDUCATION

3,417

Webinars Viewed

80+

Professional Development Events

18+

Communities of Practice

100+

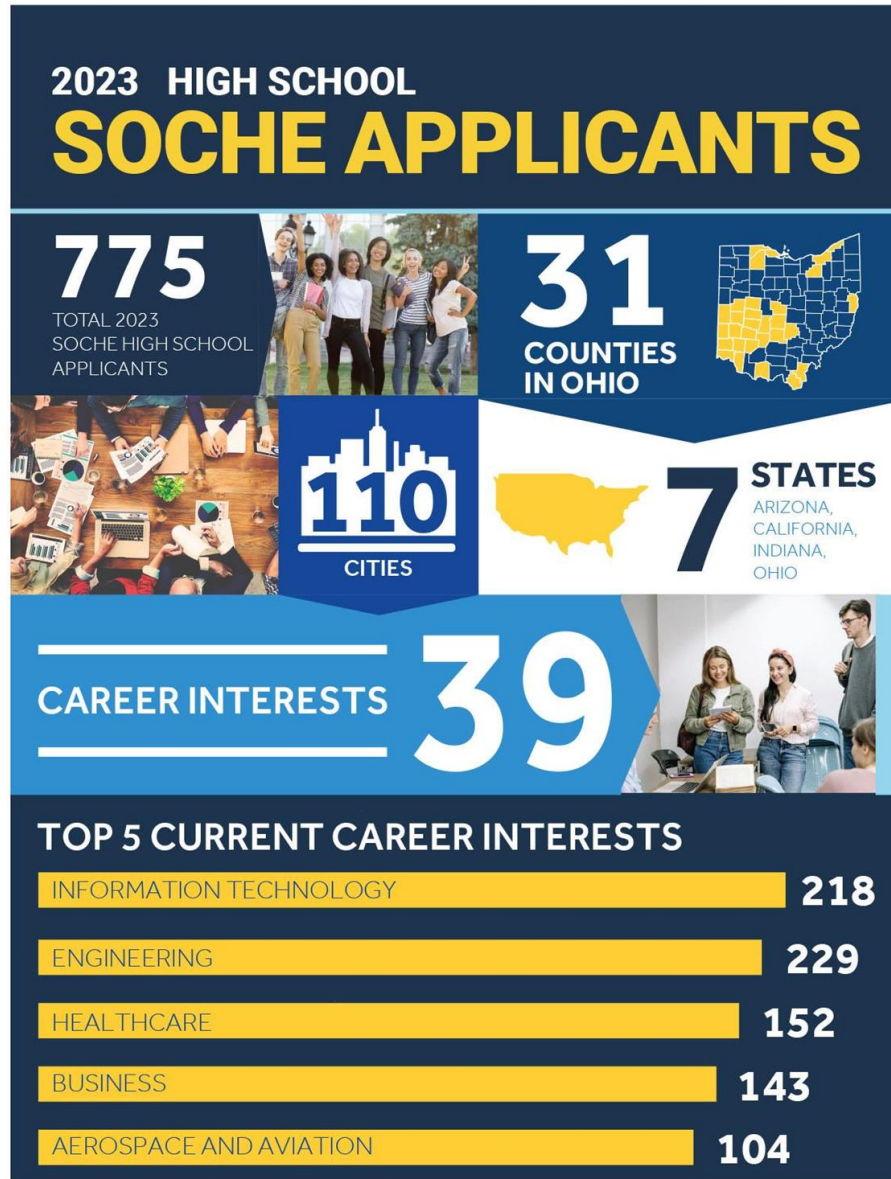
Masters & PhD Students Hosted



SOCHEIntern Applicants 2023 – Higher Education



SOCHEIntern Applicants 2023 - High School



Paid Internships Opportunities



Occupations:

- Aerospace
- Accounting/Finance
- Agriculture
- Automotive
- Biology, Chemistry, and Physics (all sciences)
- Business Operations
- Computer and Cyber Security
- Engineering (all fields)
- Marketing/Graphic Design
- Information Technology
- Logistics
- Manufacturing
- Neuroscience
- Construction
- Healthcare

Intern Schedule

- 15 - 25 hours/week during school year
- Full-time in summer
- In-person, remote, and hybrid options
- Short-term projects

Co Op Schedule

- Full-time for a semester
- In-person, remote, and hybrid options



Example SOCHE*Intern* Employment Partners

- **Wright-Patterson Air Force Base (STEM)**
 - Air Force Research Laboratory (AFRL)
 - Air Force Institute of Technology (AFIT)
- **Regional Partners (STEM and Non-STEM)**
 - Montgomery County Environmental Services
 - City of Dayton (Aviation, IT, Water Department, etc.)
 - Wright Brothers Institute
 - QQE Systems
 - TechForge
 - CDO Technologies
 - Pole Zero
 - CareSource
 - PQ Systems
 - Dayton Children's Hospital
 - Connection IT
 - KBR
 - Chapel Electric
 - And many more.....



Cell Phone Protocol





Miami Valley Military Affairs Association Strategic Impact



Guiding Principles

- Patriotism
- Service



Mission

- To strengthen relationships with Miami Valley communities by assisting in meeting the needs of military personnel and their families.



Strategic Priorities/Goals

- Strengthen our relationships in the community.
- Address the needs of the military community and their families
- Revitalize our organization



Annual Impact on the Miami Valley Military Community & Their Families

- Connect the community with the bases in our Region
 - Get Acquainted Receptions
 - Special Military Visitor Receptions



Annual Impact on the Miami Valley Military Community & Their Families

- Serve the military and their families (~\$5,000/yr)
 - Mayors & Managers Annual Dinner at WPAFB
 - Armed Forces Day - Springfield
 - Presidents Club Legion of Honor Lunch
 - WPAFB Quarterly Awards/Annual Awards
 - POW/MIA Ceremony
 - First Sergeant Support
 - Multiple events for junior enlisted & families



Annual Impact on the Miami Valley Military Community & Their Families

- Support the Fisher Nightingale Houses (~\$9,000/yr)
- Support the First Sergeants (~\$3,000/yr)
- Support the USO (~\$1,000)





How can you participate?

- Become a member of MVMAA:
 - Opportunity to join Wright Patt Country Club
 - Invitation to get acquainted receptions with the military community
 - Invitation to attend events with military community (Deployed Family Meals/Gatherings for Junior Enlisted/etc.)
 - Invitation to annual golf outing
 - Invitation for Armed Forces Day in Springfield
- <http://mvmaa.org>



Join us in supporting our Military Community!

