



# **UNISTREAM® PLC**

# UNISTREAM® PLC



## First from Unitronics - PLC without HMI:

Powerful Controller brings a new concept to Industrial Control –  
PLC with Virtual HMI

### Benefits:

- Based on award-winning UniStream® series
- DIN-rail mounted
- Range of built-in I/O configurations
- Virtual HMI
- UniLogic®: Award-winning software
- Industry 4.0 ready
- **New target audience to reach!**



# UNISTREAM® PLC

**The best of two worlds: Robust PLC Hardware with Virtual HMI**

## Virtual HMI:

- Build your PLC & HMI application using **the same software**
- Download your program to the PLC
- Simultaneously store & run both the program logic and HMI application
- Remotely operate your machine or process via any mobile phone, PC or any other display device

## Hardware:

- High performance robust PLC fits in to any control application
- Built-in I/O with more than 2,000 I/Os expansion
- Matches vast application requirements
- Advanced support for Industry 4.0

# Available in three series: Pro (B10), Standard (B5), and Basic (B3).



# UNISTREAM® PLC

## PLC

- I/O options: digital, analog, high speed & temperature
- Expand locally: up to 2048 I/Os
- Expand remotely: via UniStream Remote I/O
- Auto-tune PID, up to 64 independent loops
- Recipes & data logging via data tables & sampling
- MicroSD card - log, backup, clone & more
- Function Blocks & Structs

## General Features

- SQL Client\*
- Web Server\*
- FTP server & client
- E-mail & SMS
- Remote access via VNC

## Communication

### Built-in ports

- 2 Ethernet TCP/IP
- 1 USB host
- 1 USB mini for programming

### Add-on ports

- CANbus
- RS485
- RS232

### Protocols

- MQTT Client
- EtherNet/IP
- MODBUS TCP
- CANopen, CANlayer2, UniCAN
- SNMP
- BACnet, KNX and M-Bus via gateway



# UNIStream® PLC

## Virtual HMI

- Full HMI functionality
- Support different resolution type
- Includes Drag & Drop graphic library
- Multi-language display
- Built-in Alarm Screens
- PDF viewer
- Multi-level password protection –easy and fast

## UniStream® Display

- High quality color touchscreen
- Size: 5", 7"

### Support UniStream Modular HMI Panels:

- Size: 10.4", 15.6"



# Hardware Features

		B3	B5	B10
Ports	microSD	-	1	1
	USB Host	1	1	1
	mini USB Programing	Programming via Ethernet cable only	1	1
	Ethernet	2	2	2
Uni-Com	CANbus	1	1	1
	RS232	1	Up to 2	Up to 2
	RS485			
IO	Uni-I/IO Expansion	No	Yes	Yes
	Unistream Remote IO Adapters	1	8	8
Communication	Modbus TCP	Yes	Yes	Yes
	MODBUS Slaves	Up to 8	Unlimited	Unlimited
	Ethernet/IP Scanners	1	16	16
	Ethernet/IP Adapters	8	32	32
	FTP	No	Server/Client	Server/Client
	MQTT	Yes	Yes	Yes
	SNMP	Yes	Yes	Yes
	Send mail	Without Attachments	Yes	Yes
	Web Server	No	No	Yes
	SQL Client	No	No	Yes
Other	VFD	2	32	32
	Saving Data Tables to SD	No	Yes	Yes
	Screenshots	No	Yes	Yes
	PID Loops	2	64	64
	Data Sampler/Trends	No	Yes	Yes
	CSV files: creating/ reading	No	Yes	Yes

# Expansions

## Communication Expansion

Expand using the UAC-CB modules

	Article Number	B3	B5	B10
CANbus	UAC-CB-01CAN	1	1	1
RS232	UAC-CB-01RS2	1	Up to 2	Up to 2
RS485	UAC-CB-01RS4			

## Uni-I/O™

Use the same line of I/O modules as UniStream Modular series

## Remote I/O

Expand your reach using our Ethernet based Remote I/O

## Local & Long Expansion Adapters

Use the same short and long range adapters that are compatible with the UniStream Modular series (UAG-XKxxx, UAG-XKPxxx, and UAG-XKPLxxxx).





# LEDs, Switches and User-Interactions

UniStream PLC has new led indicators

Examples:

Status LEDs	Color & State		Indication
RUN	Green	On	Run mode
		Blink	This indication is in conjunction with the USB LED.
	Orange	On	Start-up mode
		Blink	Stop mode
ERROR	Red	On/Blink	The Error LED can give indications in conjunction with the RUN and/or USB LED.
USB	Green	On	A USB drive that contains valid action file(s) is detected
		Blink	USB Action in progress
BATT. LOW	Red	On	Battery is low or missing
FORCE	Red	On	I/O Force on

Error Indications			
RUN	ERROR	USB	Indication
	Red blink	Off	USB Action has failed – disconnect the USB drive to dismiss the error
	Red blink		HW Configuration Mismatch – the HWC in the UniLogic application does not match the Uni-I/O modules physically connected to the PLC
Orange blink	Red blink		Application Invalid or Version Mismatch (UniLogic version is not supported by device firmware)
	Red On		Uni-I/O Error (check wiring connections)
Orange blink	Red On		OS/Application error

I/O LEDs	Color	Indication
Digital Input	Green	Input state
Analog Input	Red	On: Input value is in Overflow
Relay and Transistor Output	Green	Output state







## New UniLogic® Release

- **Support in the new UniStream PLC**
- **USB Action Files** - Create Action files in UniLogic and save them to a USB mass storage device, such as a flash drive.
- **Set PLC Configuration from file** - A new Ladder function enables you to load configuration files that modify functions such as: Email accounts, FTP Client/Server, Com Modbus and more.
- **Switch Case** - You can define groups of Switch Cases, and then run them via the Switch Case Ladder function.
- **SQL: Stored procedure** - You can ignore @ placeholders by checking the "Is Executing a stored procedure" checkbox for each query.
- **Email Attachment, Alarm Logs** - You can now attach Alarm Logs as a .csv file.
- **New Ladder Elements**
- **HMI Editor Additions**
- **Alarms** - Now support several new features
- **Language** - Korean
- **Modbus** - Modbus Groups have been increased to up to 128 groups

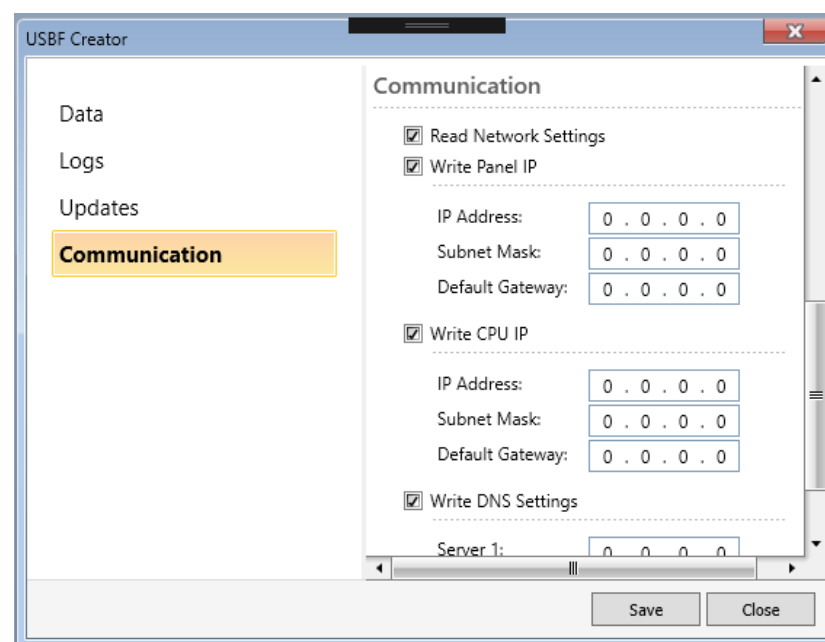
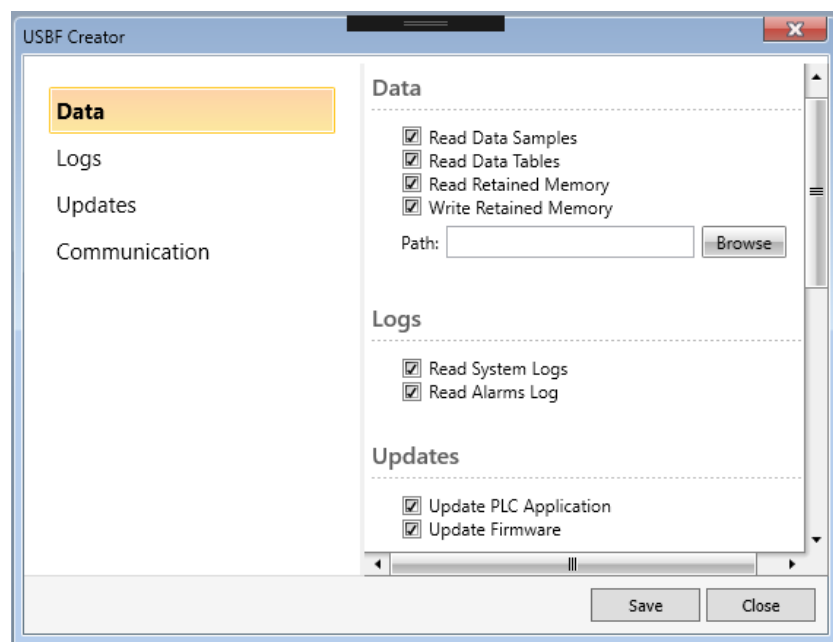
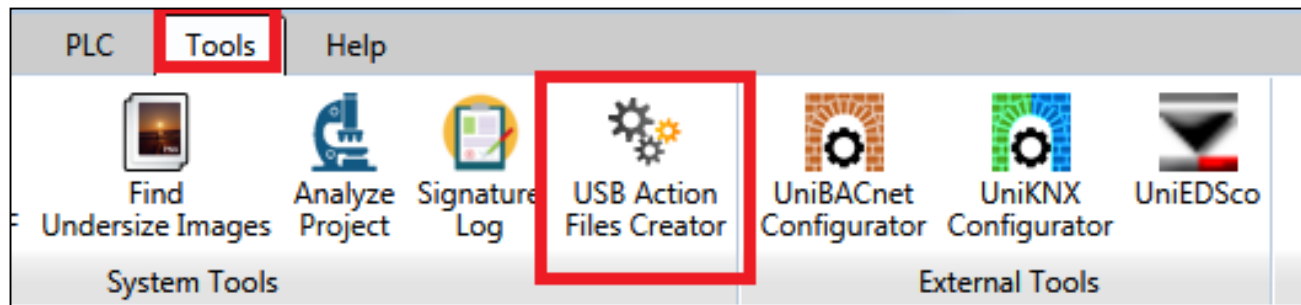


# USB Action Files Creator

## Supported Actions:

Operation	Read/Write <sup>1</sup>
Network settings -> Ethernet	R/W
Unitronics R&D debug Logs	R/O
Sample (trends) data	R/O
Application-generated Alarms	R/O
BIN Update	W/O
CPU OS Update	W/O
FPGA Update	W/O
Application Download	W/O

# USB Action Files Creator



Thank you!

