

After School Fun at Temple Beth Hillel-Beth El's Early Childhood Center For the Threes, Pre-K and Kindergarten Classes

3:00 pm to 4:00 pm- Snack Included



Karate for Kids

with Karen Dagenais
An early childhood centered introduction to the discipline of Karate taught by our very own black belt certified instructor.

Mondays:

11 weeks:

Sept. 19, 26

Oct. 10, 31

Nov. 7, 14, 21, 28

Dec. 5, 12, 19

Cost:

\$205.00

(14 children limit)



Science Fun

with

‘Nature’ Jack Marine

Wonderful and wacky experiments to ignite your child's curiosity and sense of wonder!

Tuesdays:

9 weeks:

Sept. 20, 27

Nov. 1, 15, 22, 29

Dec. 6, 13, 20

Cost:

\$220.00

(14 children limit)



Yoga Play

with Karen Dagenais

Yoga improves strength, focus, flexibility and self-esteem. It also promotes creativity in a safe, fun and nurturing way. An introduction to yoga poses through stories, music and games.

Wednesdays:

12 weeks:

Sept. 21, 28

Oct. 5, 19, 26

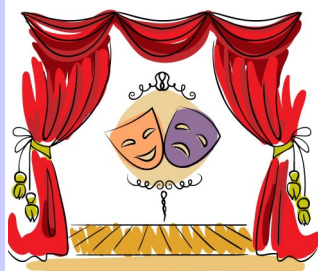
Nov. 2, 9, 16, 30

Dec. 7, 14, 21

Cost:

\$224.00

(14 children limit*)



WolfPAC Theatre!

Stories come to life in this creative class where imagination is center stage. Theatre allows young performers to create and act out fairytales, fables, and familiar children's stories using costumes, creativity and fun!

Thursdays:

12 weeks:

Sept. 22, 29

Oct. 6, 13, 20, 27

Nov. 3, 10, 17

Dec. 1, 8, 15

Cost:

\$260.00

(12 children limit*)

Name of Child _____ Child's teacher _____

Name of Parents _____

Phone Number _____ Email _____

(check each box below for the class or classes you wish to enroll your child)

Karate (Mondays) ☐ \$205.

Yoga (Wednesdays) ☐ \$224.

Science (Tuesdays) ☐ \$220.

Drama (Thursdays) ☐ \$260.

Total Enclosed: _____ Make checks payable to Temple Beth Hillel-Beth El

Children enrolled in Late Care for 5 days per week receive a 25% Discount on our after-school programs.

Enrollment Deadline is Monday, September 12th.

*If there are more applications for a particular class than allotted spaces, we will use a lottery system for class enrollment.