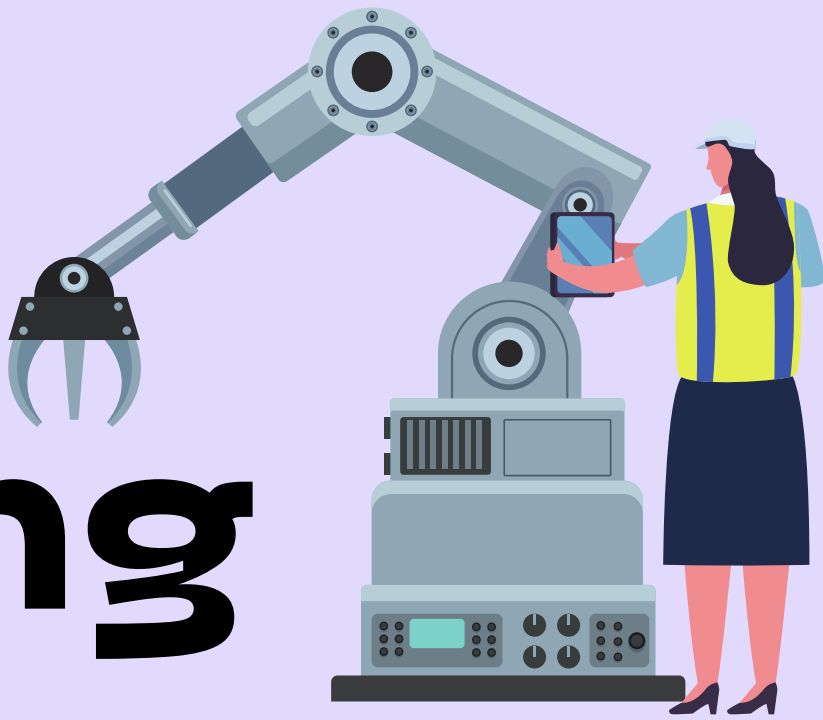
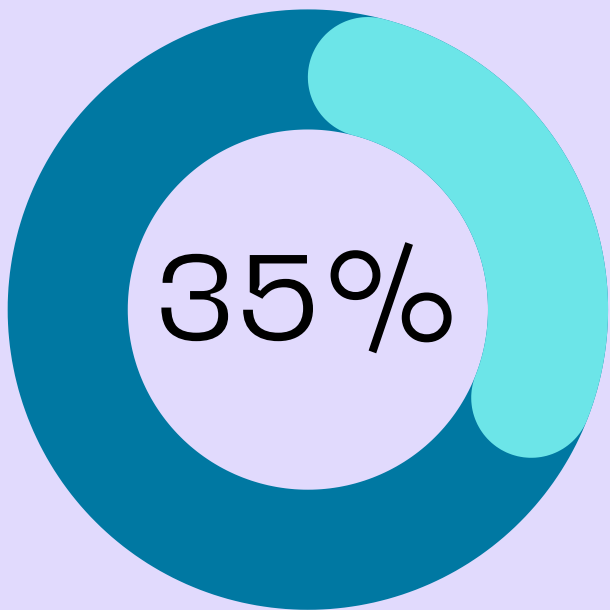


# Career Pathways in Manufacturing

Careers in Manufacturing offer easy entry, family sustaining wages, and high growth. Employ Milwaukee currently has training programs to jump start or upskill your manufacturing career. Visit [EmployMilwaukee.org](http://EmployMilwaukee.org) for more information.

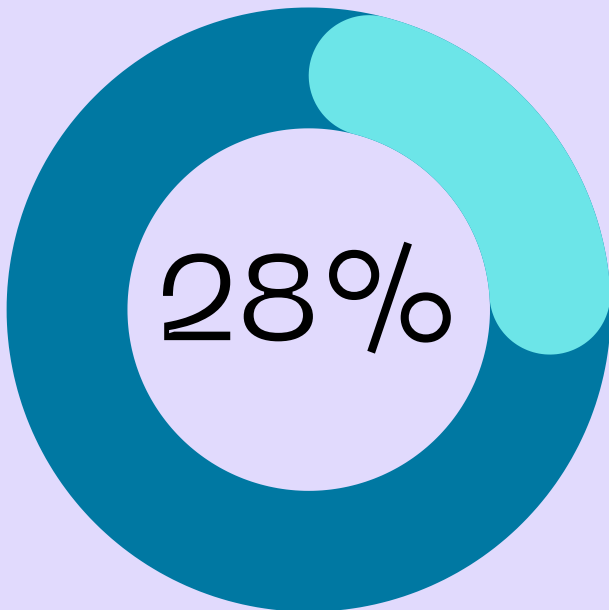


## Racial Diversity



of workers in this field identify as racially diverse.

## Gender Diversity



of workers in this field identify as female.

## Hot Jobs

1. Machine Operators
2. Assemblers
3. Production Supervisors
4. Quality Inspectors
5. Quality Technicians

\*based on unique job postings from September 2022 in Milwaukee County



## Entry Level: High School Diploma or Equivalent

### Occupation

### Avg. Hourly Earnings

Assemblers and Fabricators.....	\$17.29
Inspectors, Testers, Sorters, Samplers, and Weighers.....	\$21.19
Packaging and Filling Machine Operators and Tenders.....	\$17.29

## Middle Skill: Certification or 1–2 year degree

### Occupation

### Avg. Hourly Earnings

Prepress Technicians and Workers.....	\$21.54
Computer Numerically Controlled Tool Programmers.....	\$28.65
Tool and Die Makers.....	\$27.48



## High Skill: Long-term On-The-Job Training

### Occupation

### Avg. Hourly Earnings

Water and Wastewater Treatment Plant and System Operators.....	\$28.91
Power Plant Operators.....	\$38.73
Gas Plant Operators.....	\$43.28



Employ Milwaukee is an equal opportunity employer and service provider. If you need this information or printed material in an alternative format, or in a different language, please contact us at 414-270-1700. Deaf, hard of hearing, or speech impaired callers can contact us through Wisconsin Relay Service at 7-1-1.



Data provided by Lightcast. Interested in applying for a job? Visit [JobCenterofWisconsin.com](http://JobCenterofWisconsin.com)

