



# Parks & Recreation System Plan

WEA - Land Use and Housing Committee Project Introduction



# Agenda

## Covered in this presentation

- Current 2010 Master Plan

- 2010 Master Plan

- Master Plan vs. System Plan

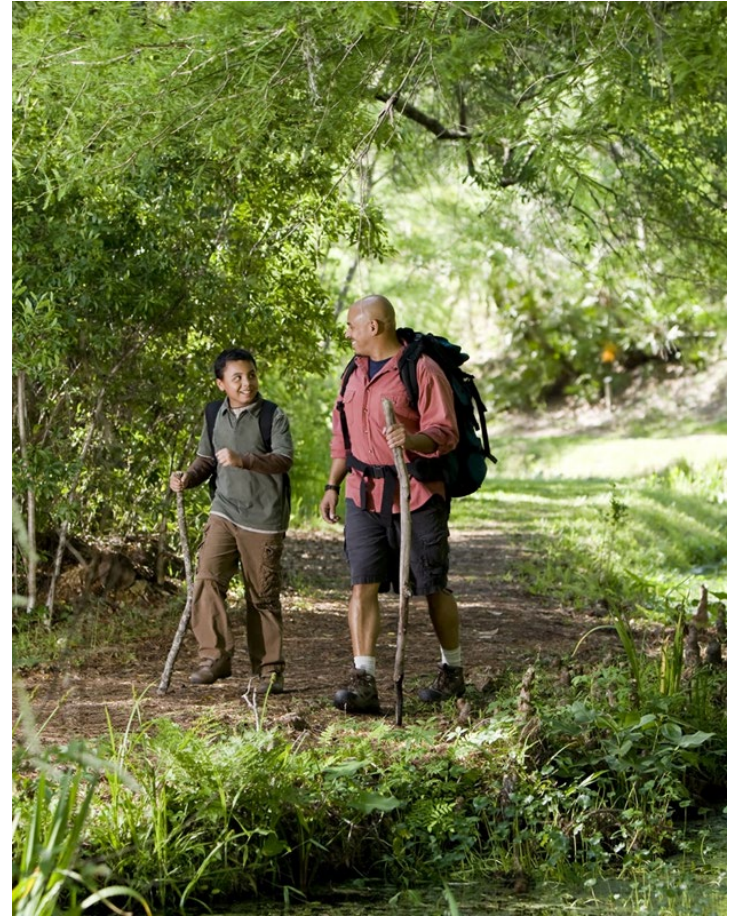
- System Plan

- Pre-planning
- Goals and Approach
- Equity

- Process

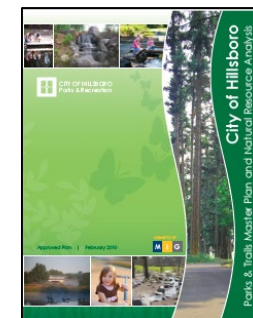
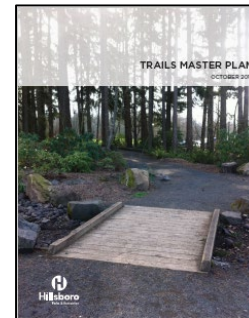
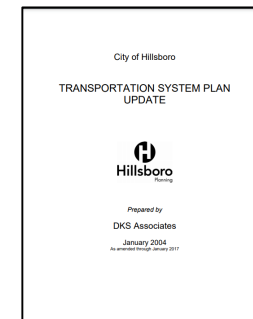
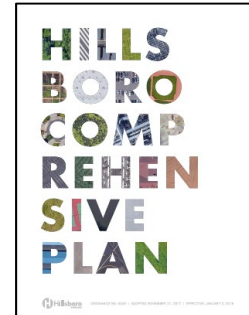
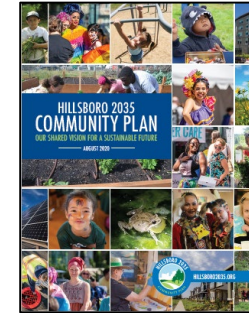
- Staffing
- Contracting
- Committees
- Council and Commission
- Timeline

- Next Steps



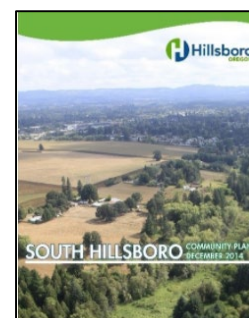
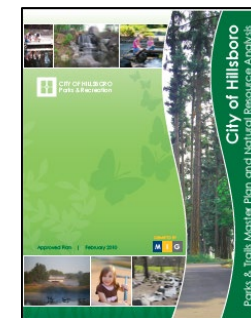
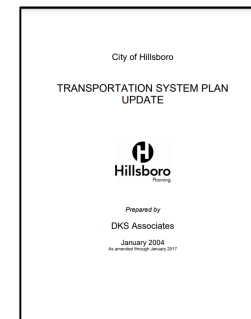
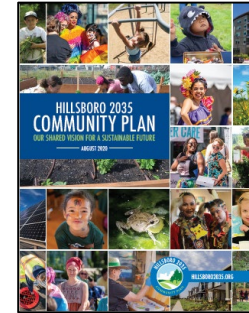
# 2010 Master Plan

- Current plan completed 2010
- Out of date
  - 13,000 more residents since 2010 (2020 population est. 106,000),
  - 1,600+ acres added to UGB since 2010,
  - More parks, trails and natural areas: 363+ acres, ~5 miles
  - City has expanded (South Hillsboro, North Hillsboro),
  - Future expansion areas (Witch Hazel Village South, Jackson School East),
- Need/required to integrate with other plans
- Does not include current Council Goals
- Need for equity and inclusion



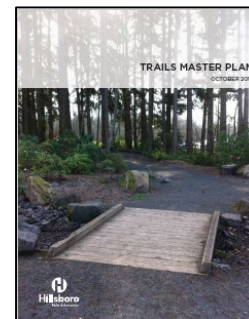
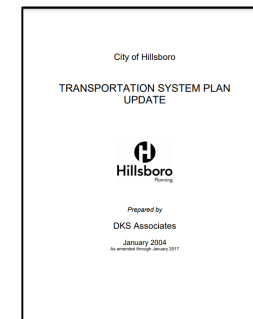
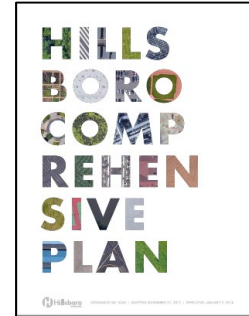
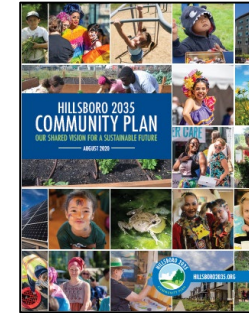
# System Plan vs. Master Plan

- Parks and Recreation Master Plan
  - Community based
  - Inventory of physical assets
  - Focuses on the build environment and amenities
  - Primary recommendations for; department goals and policies, CIP, acquisition.
- Parks and Recreation System Plan
  - Community based
  - Inventory of “services”
    - Programs
    - Land management
    - Natural Resources
    - Business services
    - Park Development
  - Layers and analyses all P&R services for a comprehensive approach to delivering services in the future
  - Integration of other planning processes goals and action items



# System Plan Approach

- Pre-planning
- 50+ year vision, 15 years implementation
- Inspired by Council goals and Comprehensive Plan goals
- Comprehensive long range view of services  
Capital, programming, maintenance, and operations, for the full complement of the Parks and Recreation Department's portfolio
- Integrate with other plans
- Equity and inclusion
- Determine updated community based priorities
- New and upcoming outreach tools/processes
- Living document

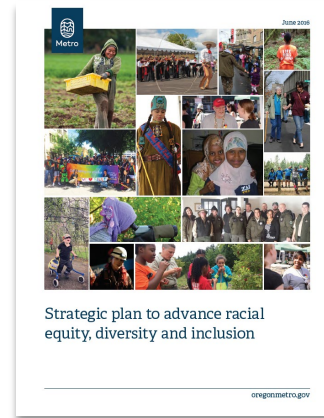
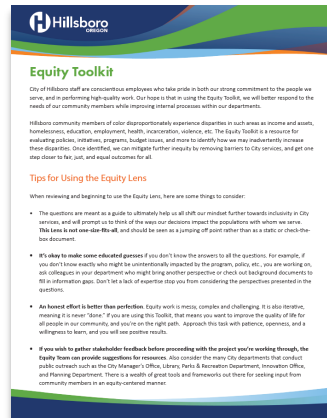
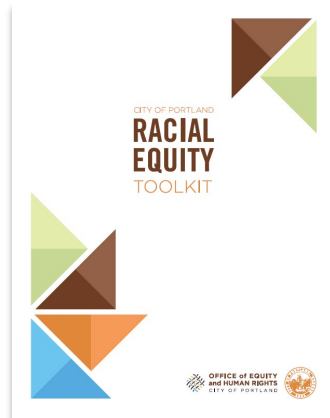




# Building in Equity

## WHAT EQUITY MEANS FOR HILLSBORO PARKS & RECREATION PLANNING

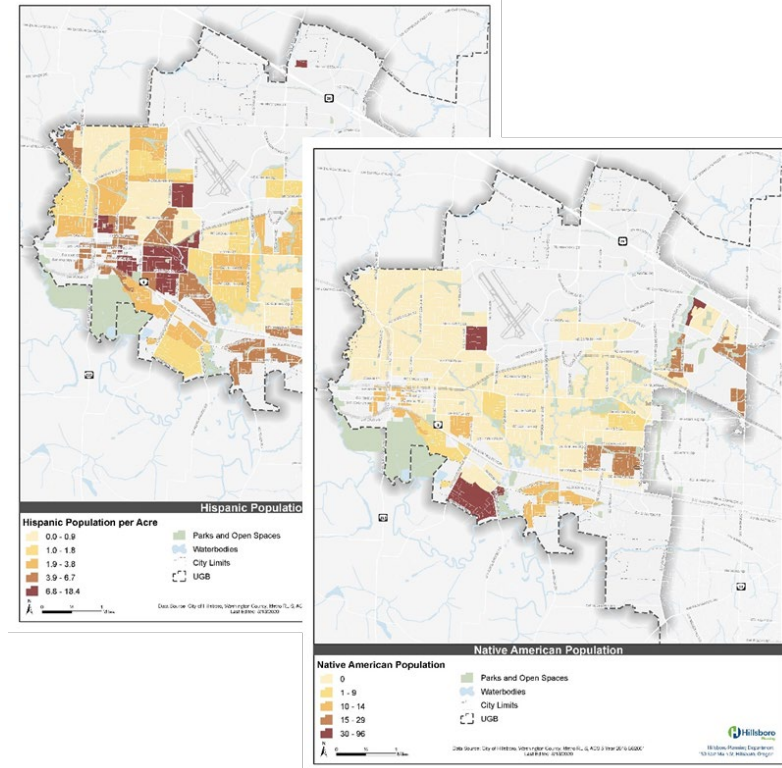
- Amplify voices of underserved and marginalized community groups. Engage the widest cross-section of the community (BIPOC, Latinx, LGBTQ+, Houseless, Disabled, Economic disadvantaged).
- Understand our communities needs and wants.
- Actively expand on and create new meaningful relationships with community leaders and groups.



# Building in Equity

## OUTCOMES TOWARD EQUITY

- Take several solid steps towards equity (no shaky leaps).
- Utilize and refine existing efforts.
- Analysis of our system and community demographics.
- Integrate goals and actionable steps to implement system equity.
- Refined equity lens for Parks service delivery and prioritization.
- Intentionally create prioritization structures based on equity.
- Meaningful Land acknowledgements.



# Timeline

## PARKS & RECREATION SYSTEM PLAN - CONCEPTUAL TIMELINE

PHASE		2022						2023	
		Jul-Sep	Oct-Dec	Jan-Mar	Apr-Jun	Jul-Sep	Oct-Dec	Jan-Mar	
Phase 1	Contracting & Project Initiation	←→							
Phase 2	Inventories & Research		←→						
Phase 3	Outreach & Plan Development			←→					
Phase 4	Draft Plan				←→				
Phase 5	Adoption Process						←→		

## Timeline

- Contracting – Fall 2021
- Engagement – Spring to Early Fall 2022
- Plan development – Summer to Winter 2022
- Adoption – Winter/Spring 2023



# Process

---

## How are we proceeding?

- **Contracting**
  - Community Engagement
  - Planning and Technical Services
  - C.B.O.'s and other Contracts
- **Staffing**
  - Parks and Recreation staff
  - Other City departments
- **Community Partners and other agencies**
  - Hillsboro School District, Hillsboro Chamber of Commerce, Medical providers
  - Metro, Washington County, CWS, and other potential partners
- **Committees**
  - Steering Committee and Workgroup (conceptual)
- **Parks and Recreation Commission**
  - Oversight
  - Involvement
- **City Council**

# Next steps and Questions

---

- September 2021 – Consultant Interviews
- October 2021 – Contracting

*“It’s not rocket science it’s a park. You think parks are tough, you should see how difficult highways are”*

*In fact for highways and rockets you need to be good at math, Parks require math plus horticulture, hydrology, psychology, sociology, and communication.*