

June 8, 2022

Westside Multimodal Improvements Study

Stephanie Millar, ODOT

Kate Hawkins, Metro



Agenda

- 1 Why?
- 2 Study Area
- 3 Goals
- 4 Decision Making Structure
- 5 Engagement
- 6 Technical Methods
- 7 Schedule
- 8 Issues and Needs
- 9 Discussion



Why?

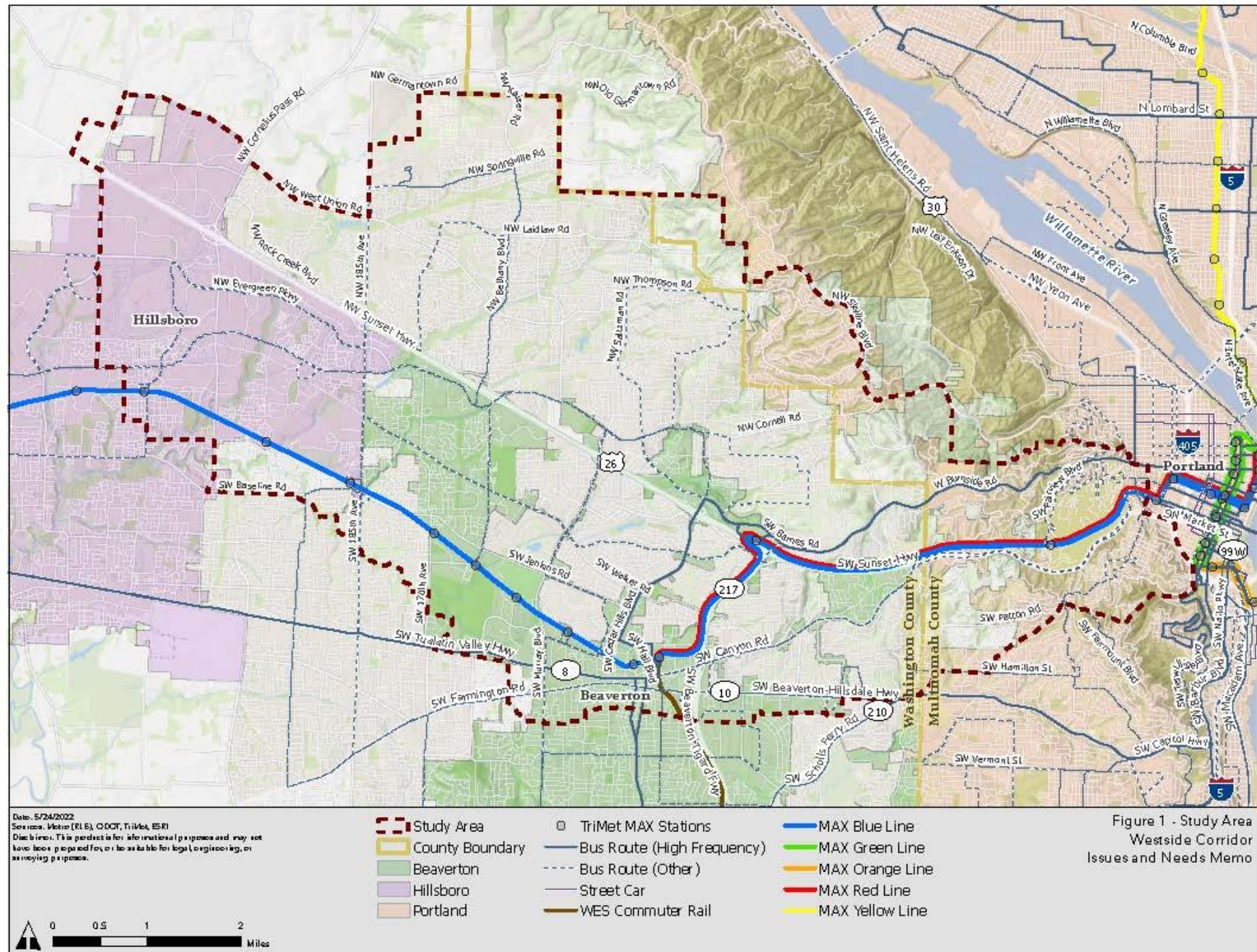
- Transportation challenges in the corridor
 - Congestion
 - Safety
 - Equity
- Projected growth
- The corridor's issues impact the entire region
- To build upon past studies

Problem Statement

Current multimodal transportation conditions in the Westside Corridor result in unreliable travel times for people and freight that adversely affect livability and safety, and can impede economic competitiveness.

Study Area

- Project will identify transportation issues inside the boundary
- Solutions may extend past or occur outside the boundary



Study Purpose & Goals

Purpose

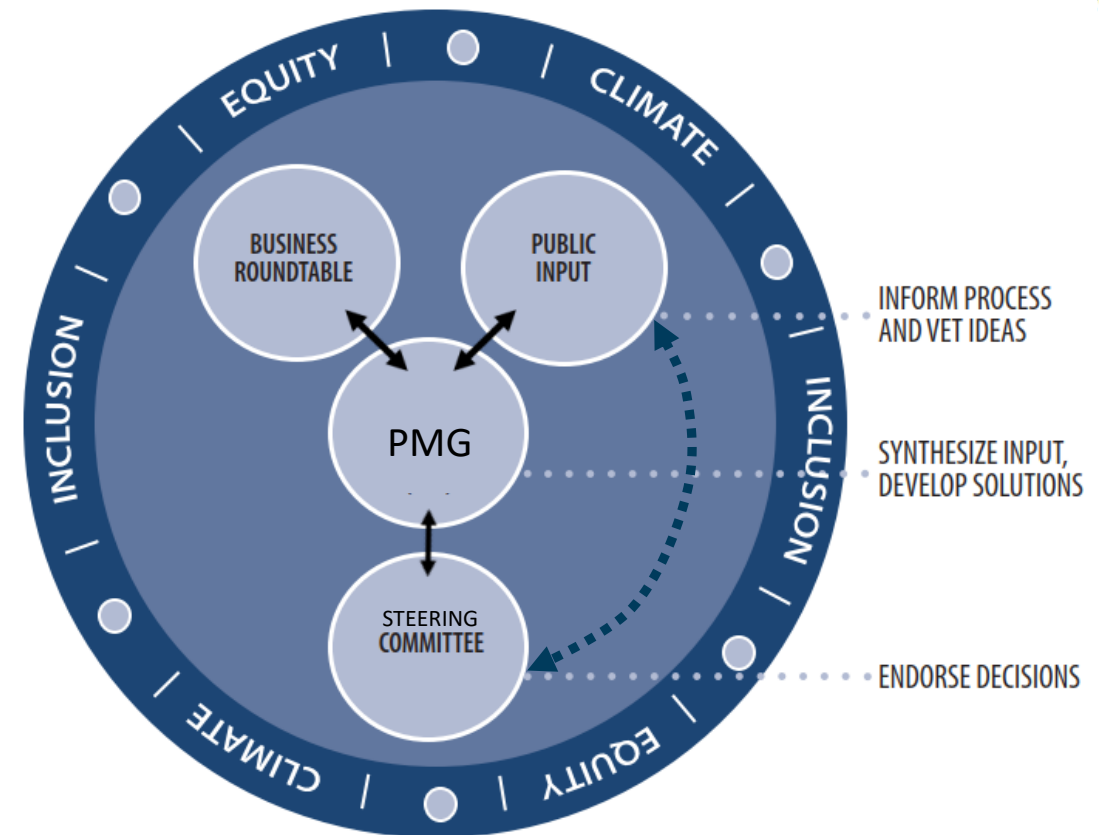
Collaboratively identify issues and needs in the study area and develop right-sized solutions that can be delivered at the right time.

Goals

- Develop fair and equitable outcomes.
- Improve access to regionally significant employment, educational, and commercial centers.
- Improve mobility throughout the Westside corridor for all travelers and freight movement.
- Improve connections between agricultural freight areas in northern Washington County and freight distribution areas in Multnomah County.
- Support future household and economic growth projected in the corridor.
- Support regional and statewide climate goals.
- Support adopted land use plans and goals for the region.

Project Decision Making Structure

- Governance and decision making
 - Steering Committee
 - Project Management Group
 - ODOT/Metro
 - Public input via survey
 - Business input through business roundtable, public input, and contact through PMG and Steering Committee members
 - Community input through targeted engagement with historically marginalized communities and neighborhood groups, and contact through PMG and Steering Committee members



Engagement

- Online Survey
- Business Roundtable
- Targeted outreach led by community-based organizations
- Presentations to neighborhood groups and business associations
- Public Comment



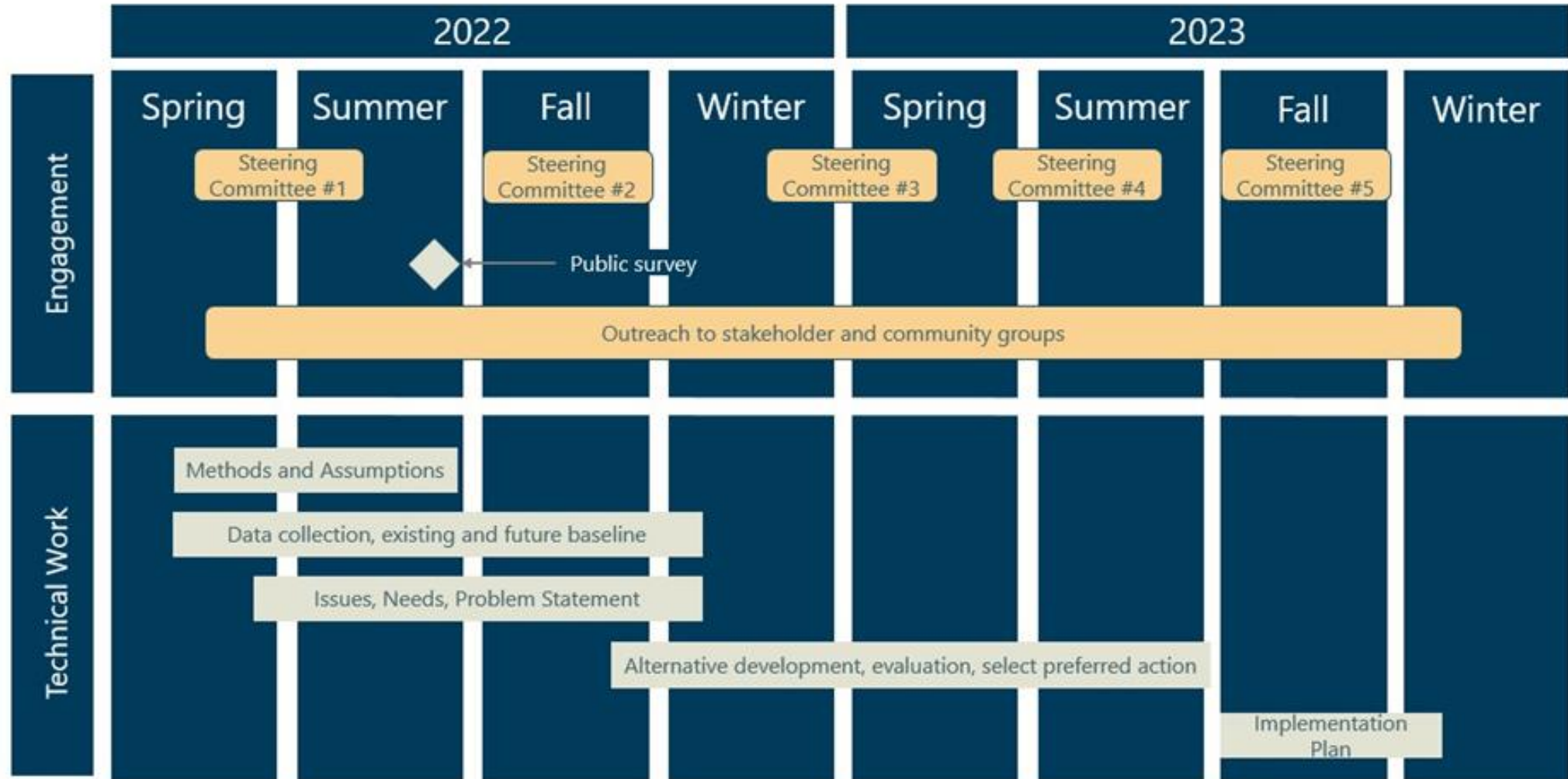
Technical Methods

- Review of previous studies (transit studies, WC Transportation Futures Study, Westside Freight Logistics Study, Metro Regional Congestion Pricing Study, etc.)
- Existing and future conditions modeling
- Identify projects, programs and policy options
- Create and evaluation alternatives (packages of projects, programs, policies)
- Select Preferred Alternative

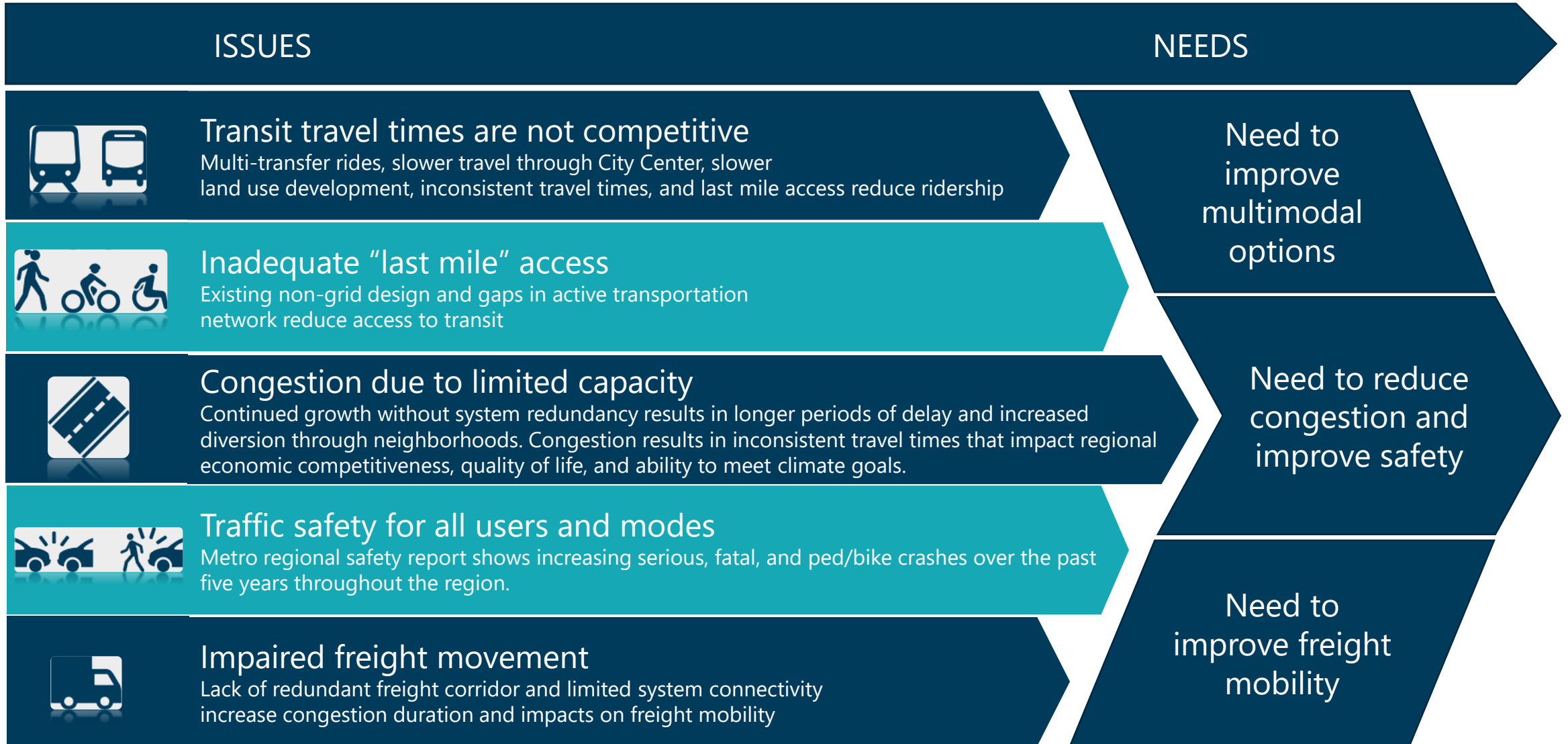
Data Collection/Analysis

- Crash data
- Model data (regional and mesoscopic)
- Intersection analysis
- Travel patterns/diversion
- Transit data
- Active transportation data
- Air quality analysis
- Cost estimates
- Economic analysis
- Active transportation data

Schedule



Issues and Needs



Comments, questions, and feedback?

Thank you!



Stephanie Millar – Stephanie.I.Millar@odot.oregon.gov

Kate Hawkins - Kate.Hawkins@oregonmetro.gov