



**Allegheny Evangelical  
Lutheran Church**

1327 Alleghenyville Rd.  
Mohnton, PA 19540  
610-777-2520  
[www.aelc.org](http://www.aelc.org)

**Church Staff**

**Pastor**

The Rev. Zach Labagh  
[pastorzach@aelc.org](mailto:pastorzach@aelc.org)  
610-777-2520

**Director of Youth & Mission**

Kristen Kelly  
[youthd@aelc.org](mailto:youthd@aelc.org)

**Dir. of Children & Family  
Ministries**

Annemarie Pietrobono  
[Annmarie@aelc.org](mailto:Annmarie@aelc.org)

**Music Director**

Annie Rose Tindall-Gibson  
[Annie\\_musicd@aelc.org](mailto:Annie_musicd@aelc.org)

**Praise Team Leader**

Bill Moczydlowski  
[wsmoczy@hotmail.com](mailto:wsmoczy@hotmail.com)

**Office Administrator**

Dee Constable  
[office@aelc.org](mailto:office@aelc.org)

**Sexton**

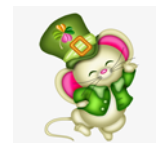
Jean Jones

**Pastor Emeritus**

The Rev. Charles Charles

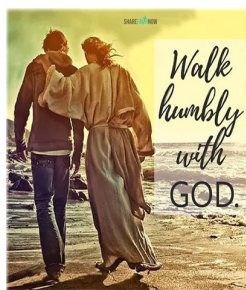
# AELC News

News from and around  
Allegheny Evangelical  
Lutheran Church



## MARCH 2022 NEWSLETTER

*"Come, to know the love of God: Go, to make it known."*



Grace and peace to you from God our Creator and Jesus who came to show us mercy and grace. Are humbleness and humility the same thing? Do we walk humbly in our lives? How do we see our walk with Jesus in today's world? Do we allow ourselves to be guided by Jesus, and to walk with others? Is accompaniment something that we can strive for? All of these questions will be discussed during our Mid-week Lenten worship/discussion online this year. As we approach the season of Lent and hear about what God has done and continues to do, we can seek to find ways to walk more fully with Jesus. Our mid-week worship is an opportunity for us to have some deep discussion about the last part of Micah 6:8 "walk humbly with your God" and how we might be able to live more fully into this in our lives.

Lent is a perfect time for us to consider this topic, as individuals and as members of a community of faith. How has/is God living in us and guiding us? Listening to one another, and listening for God in our midst can be challenging, yet we are able to come together and share in this powerful promise that God gave to all people.

The season of Lent allows us to follow this path of humbleness and humility as we walk towards the cross. Not only did Jesus, God's word made flesh, humble himself to become enfleshed, but Jesus also was willing to humble himself to the point of death,

even death on a cross. Our God comes to us, arms open to show love and envelope all people. This is the Love of God we invite others to experience at AELC. This is the Love of God that we seek to take with us and share as we live our daily lives. As we walk this Lenten journey this year, I pray that we will all walk it with humbleness, seek to find the Love of God in each day, and to willingly share the Love of God with all we encounter.



Peace in the Christ who humbled himself for us;

*Pastor Zach*



## Souper Bowl of Caring Update

**489 cans were collected and \$2,809 will be sent to Helping Harvest!**

**Thanks to all who participated.**

### **WORSHIP ASSISTANTS NEEDED**

Lay Readers to have a choice of either pre-recording the readings or providing the readings in person, onsite. Please use the link below to sign up for the reading you wish to do and make your choice of presentation – pre-recorded or onsite. Or you can contact Gaye Dougherty at [gayedougherty@gmail.com](mailto:gayedougherty@gmail.com) or 610-507-4562 or contact Dee Constable at [office@aelc.org](mailto:office@aelc.org), 610-777-2520.

<https://www.signupgenius.com/go/30E0F45ABAD2EA1F58-worship>

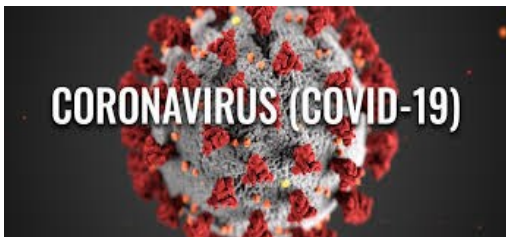
# Sr. High Faith Formation



Join us in March for Senior High Faith Formation! On **March 6** we will be meeting with the Adult Faith Formation to discuss Gaining Strength in the Synod: How can AELC play a part? We need your voice to be a part of this discussion as we look ahead. We will then meet again on March 20 in our senior high room. If you have any questions please contact Kristen, Janine Labagh or Allison Eshleman. We look forward to seeing you in March!



**March 6**—During Adult Faith Formation we will be sharing an abridged video from Bishop deForest, and the new Synod goal of 'gaining strength' working together as a congregation and with congregations in the Northeastern PA Synod. One question we will be discussing is "what do you consider a 'vital sign' for a congregation?" We will be talking about vital signs for AELC and share our feedback with the Bishop. We looking forward to this discussion with our adults, Senior High and CAT class students.



**March 13**-Paul Brockman will lead a discussion on Covid and the science behind it.



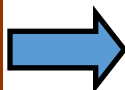
# Youth & Mission



Join us on Sunday, **March 27** for our next Joint Youth Group with St. John's! It's AELC's turn to host! Come join us in making a meal for Opportunity House and grow in our friendships and faith!

This year we are having a Mini-Mission Trip with the At-Home Mission Trip. From **June 20 to June 21**, we are welcoming 5th and 6th graders to join the At-Home Mission Trip. Our goal is for 5th and 6th graders to get a feel for what a larger mission trip is like. We look forward to introducing you to mission trips!

Thanks, Emma



## UPDATE



### INTERWOVEN



February's Interwoven was all about self-care! We are called to care for all of God's creation-and that includes caring for yourself! It's important to make sure your cup is full-full of paint! Our paint pour that was originally slated for January will take place on **March 13!** Please make sure to sign up in the lobby for this Interwoven so we can ensure to have enough supplies! Connie Kelly will be joining us to talk about how utilizing pour painting helps her care for herself and teach us a few methods!



Unfortunately, our Serve Boldly trip has been cancelled this summer, so instead join us for our At Home Mission Trip **June 20-23!** Spend the week with us, Building Stronger Together, as we serve our community and come together for fun! We can't wait to have you join us! Contact Kristen to sign up!



## Our World Hunger Auction has been rescheduled!

Save the date for **May 21** for an evening of fun, community, and a little competition as we raise money to help feed our community and the world beyond it!

We are still looking for donations for our World Hunger Event. We are looking for baskets to include in our raffle opportunities as well as larger items for our silent auction. If you are willing or interested in donating in any way, please contact Kristen Kelly at [youthd@aelc.org](mailto:youthd@aelc.org). Get creative! If you have a talent you'd like to donate (such as baking a cake, or offering your babysitting services) we'd love to showcase and auction those off as well!



A lot has been happening at the Fair Trade stand! We have recently restocked our inventory, so we have lots of chocolate bars and other delicious goodies perfect for rounding out your Easter treats. We've also added a new tea to our collection- Hibiscus Tea has made its debut at the stand. The timing is perfect. Doesn't that sound like a delicious new flavor to usher in Spring? Keep in mind that this will be the last order at our current prices. Subsequent incoming orders will reflect price increases being passed along to us to keep prices fair for our participating farmers, so get it while you can!

Along with providing high-quality, fairly traded products to the congregation, we hope to provide informative explanations for our support of these products. We highly recommend pursuing the Equal Exchange site [Equal Exchange | Fairly Traded Coffee, Tea & Chocolate](https://www.equalexchange.org/), which is full of everything from product information to delicious recipes. If you are looking for a starting point, start here [History of Equal Exchange | Equal Exchange](https://www.equalexchange.org/history). We welcome any inquiries you may have regarding products, or the organization. Questions or requests\*? Email us at [fairtrade@aelc.org](mailto:fairtrade@aelc.org)

\*Please remember- if you see a product you are interested in trying, you are not obligated to purchase an entire case of that product. If you make a request, and we think it may be something others would like to try as well, we will purchase a case for the Fair Trade stand, where you can then purchase the item singularly.

As always, thank you for your continued support, Janine and Connie

**AELC Book Club**

Join us on Thursday, **March 3** at 6:30 pm as we finish up our discussion of "Requiem for Ashes" by David Crossman. Our next book will be "Damnation Springs" by Ash Davidson. Below is the reading schedule for "Damnation Springs":

**March 17:** Pgs. 3-234

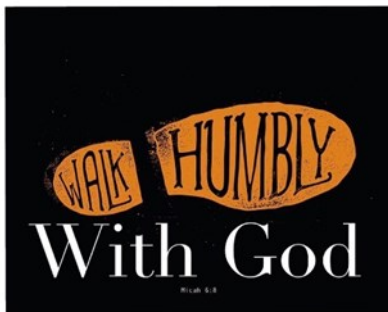
**March 31:** Pgs. 237-442

**Women's Group**

Women's Group will be taking a break through Lent and we will revisit the group after Easter.

**FOLLOW US!**

Our youth have their own Instagram page. Follow us to see all the great things we do - such as Mission Trips, Interwoven, CAT class and more! Our handle is @aelc\_youth! Check out all the amazing things we are doing through our faith!

**Mid-week  
Lenten wor-  
ship/study.**

We will gather again online this year to share in worship and dis-

cussion during Lent. Our focus will be on Walking humbly with our God. The link we will use is below, and can be used weekly. A weekly reminder, worship bulletin and soup suggestion will be emailed out the Monday of each week. Please plan to join with us for this journey.

[meet.google.com/ziw-vcwn-vrv](https://meet.google.com/ziw-vcwn-vrv)

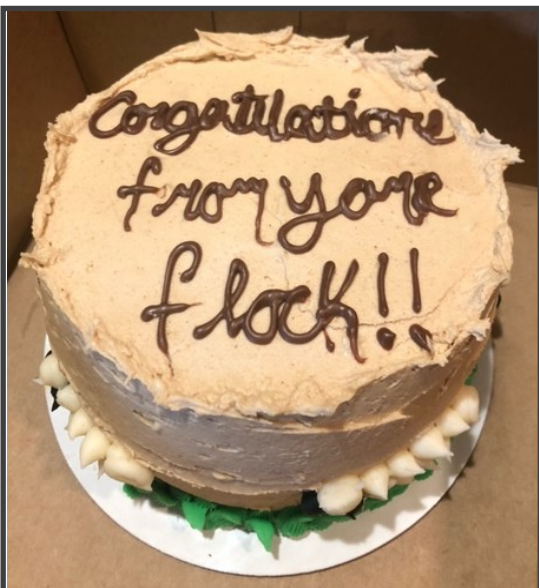


Congratulations to Dylan Yoder for getting his CDL and will now begin his new career driving for the family business.





**AELC celebrated Pastor Zach's 15 year anniversary of ordination with Batman cookies and a small cake. Kristen Kelly and Nora Frantz baked cookies for the surprise celebration.**



**FAMILY PROMISE UPDATE**

Since the beginning of the pandemic, Family Promise of Berks County has continued to serve homeless families with children. The families no longer travel from church to church for dinners and overnight housing though. Family Promise now leases two homes that can house up to four families depending on the size. This allows more stability for the families and enables them to find better jobs that don't have to fit into the former Family Promise schedule of transporting families to and from the churches. It reduces the significant cost of transporting the families daily and transporting the cots weekly. We no longer need to find volunteers to provide meals or sleep at the church for 7 days of host weeks. Most of the guest families are now able to move through the program in just 60 days and move into sustainable housing with an even higher probability of success.

**HERE IS HOW WE CONTINUE TO HELP**

During what would have been our three host weeks a year, we are now asked to provide and deliver meals to the family homes for Monday and Wednesday evenings. Also, providing gift cards to Weis or Giant grocery stores and/or Wal-Mart allows for the family to shop for the food, cleaning and personal items they need. Family Promise still provides us with a needs list for the families as well so that we might provide things like diapers and other necessities.

Special thanks to our Family Promise volunteers who served during our December host week - Ruth Sneeringer, Ruth Malone, Fran and John Holton, Gaye Dougherty and Dawn Baxter provided and delivered meals. We still had some donations left over from prior collections for Family Promise to provide gift cards and purchase diapers and baby supplies. Thanks for your support!

**OUR HOST WEEKS FOR 2022 begin March 7, August 15, and December 12.**

**For AELC's March week** - Could you cook and/or deliver a meal on March 7 or 9 at 6:00 PM? OR, Could you donate a \$25 gift card to Giant, Wal-Mart or Weis? OR, Could you make a cash donation we can use to purchase the items the families need? There will be a basket for donations in the lobby/narthex starting February 20. Please contact Dawn Baxter at 610-223-2305 or [dmb3763@gmail.com](mailto:dmb3763@gmail.com) if you can provide a meal or if you have any questions. **Thanks again for your continued generous support of this important ministry!**



# Financial Info

## Treasurer's General Fund Report

GENERAL FUND UPDATE			
	Total Attendance*	General Fund Income	Weekly Budgetary Need
Jan 16, 2022	61	\$4633	\$5418
Jan 23, 2022	72	\$3477	\$5418
Jan 30, 2022	71	\$4187	\$5418
Feb 6, 2022	112	\$5978	\$5418
Feb 13, 2022	103	\$2930	\$5418
Total	419	\$21,205	\$27,090

\*attendance includes onsite and online figures.

In January our expenses exceeded income by about \$1900. Both income and expenses were below budget.

The General Fund checkbook balance at the end of January was about \$45,500 including the PPP funds.

The HVAC fund balance which is not part of the General Fund is sufficient to cover payments through March. Contributions to the HVAC Fund have fallen off and need to pick up in order to meet our future loan payments.

Also, outside of the budget, members continue to contribute to the Debt Reduction Fund and at the end of January we had over \$9500 to use for our next principal paydown.

We contributed a total \$4580 to aid in four disasters through Lutheran Disaster Response thanks to member donations of \$2580 plus matching funds of \$2000 from the Kachel Benevolence Fund.

### Upcoming Blood Drive

We had originally scheduled the AELC blood drive for April 2, 2022. However, because Miller-Keystone is so severely understaffed, they cannot do it that day and are not scheduling any new offsite drives at this time.

The alternative is to schedule an “Allegheny Lutheran” week at the Miller-Keystone Center, 2745a Leisczs Bridge Rd, Reading which is just off Rte. 183 about two miles north of the 222 airport exit. **Allegheny Lutheran’s week is the week of March 28.** You can make an appointment for any day of that week and AELC will get credit for it. This gives you much more flexibility in scheduling, but a little more travel. It does provide a great excuse to go out to eat before or after donating while doing a great deed for mankind. More details will follow shortly.



If you have any questions, contact Bill Baxter at 610 775-3763 or [dandbbax@gmail.com](mailto:dandbbax@gmail.com).

### Holy Week and Easter Services



*Come Worship With Us!*

#### PALM SUNDAY

Sunday, April 10

10:30 am Combined Worship

#### MAUNDY THURSDAY

Thursday, April 14

7:00 pm

#### GOOD FRIDAY

Friday, April 15

7:00 pm

#### EASTER SUNDAY

Sunday, April 17

6:45 am Community Sunrise Service at  
Fairview Cemetery

8:30 am Traditional Service—AELC

10:00 am Praise Service—AELC

No Faith Formation



## West Berks Mission District

### Newsletter—March 2022



The West Berks Mission District is a coalition of area Lutheran churches working together to do effective, cooperative ministry. YOU are a member of the West Berks Mission District!  
The WBMD office is located in St. Mark's Lutheran Church, 1015 Windsor Street, Reading PA 19604.

*WBMD Director* – Dawn Baxter  
*Office Staff/ Bookkeeper* - Jane McClellan Renner

Dawn@westberksmissiondistrict.org  
Jane@westberksmissiondistrict.org

Office Phone – 610-375-8303      Website: [www.westberksmissiondistrict.org](http://www.westberksmissiondistrict.org)



## WBMD Midweek Lenten Worship Series

### LET'S WORSHIP TOGETHER IN LENT!

### Wednesday evenings beginning March 2

Plans are being made to again offer virtual WBMD worship services for Ash Wednesday and other Wednesday evenings in Lent. Please join your sisters and brothers during this holy season as we pray for and work toward keeping holy connections alive during this prolonged pandemic. We hope you will join us...

- **Ash Wednesday Worship on March 2<sup>nd</sup>** is a full service with over two dozen WBMD participants contributing content. It will be broadcast on Comcast Channel 190 at 7:30 PM on Ash Wednesday, March 2 and will be posted to YouTube by noon that day. The link will be shared on the WBMD website and will also be emailed to churches for their publications. Worshipers will be invited to impose their own ashes at home. In preparation, we suggest collecting ashes from a fireplace, soot from a burned candle wick, or even soil from a potted plant, which you may use to mark the sign of the cross on your forehead at the appropriate time in the service. Thanks to Matt Mellen at Trinity Reading for his willingness to produce this program for us.
- **Other Wednesdays in Lent** we will gather on Zoom. We will feature a recorded Lenten service from a different WBMD congregation each week. We will gather on Zoom at 7:00 PM for a short opening prayer and introduction, share the recorded 20-30 minute worship service, and then finish as our Zoom group afterward with some discussion, sharing of upcoming events, etc. We expect to be finished by 7:45ish. Zoom invitation is below.

Topic: WBMD Wednesday Lenten Service

Time: Wednesdays in Lent - March 9, 16, 23, 30, and April 6 at 7:00 PM

Join Zoom Meeting:

<https://us02web.zoom.us/j/84551069168?pwd=MEV4QnBRcG5hVDN5UGQ4cWFPTXNNQT09>

Meeting ID: 845 5106 9168 Passcode: 478157





## AUDIO-VISUAL ---team---

Can you turn up the volume on your car radio or your TV? Can you use your computer to access webpages? IF you've answered yes to either of these, then

do we have a role for you. The AV Team at AELC is currently looking for individuals to assist with worship on Sunday morning and for special services. They are a great group of people who control the sound and live internet feed during worship. They are looking for a few extra people to assist in their ministry. If you are interested, please reach out to Andy Zirkel. [itteam@aelc.org](mailto:itteam@aelc.org)



## Altar Flowers

Ministry Opportunity

Please check the sponsor chart for altar flowers in the lobby...The new chart is up for 2022. Contact Sandy Fluck at 610-334-3175

Cost: \$43/2 altar vases, \$40/chancel arrangement



Redner's Tapes can now be dropped off in the church vestibule at your convenience. Please place them in the box on the bookcase. Contact Susan Messner with any questions (610-777-7776).

Thank you!



Bulletins

Won't you please consider sponsoring the Sunday worship bulletin? The new chart is up for 2022.

Cost: \$20

If you have any questions or wish to sponsor a week (or two), please sign up on the chart in the lobby or contact Jo Verrill at [jodaverrill@gmail.com](mailto:jodaverrill@gmail.com).

**Ronald McDonald House Can Tabs are now being collected again. Please drop them off in the container in the vestibule any time at your convenience.**

**Thank you.**





**Evangelical Lutheran Church in America**  
God's work. Our hands.

February 15, 2022

*Thank You*

Allegheny Lutheran Church  
1327 Alleghenyville Rd  
Mohnton, PA 19540-7700

Dear Allegheny Lutheran Church,

Thank you for your gift of \$1,500.00 to Lutheran Disaster Response.

*This, this is Christ the king, whom shepherds guard and angels sing;  
haste, haste to bring him laud, the babe, the son of Mary!  
("What Child Is This," ELW 296)*

This season we remember a time before Christ's birth, when humanity waited to be delivered from fear and sin. But we also remember the day the waiting ended. Our Savior arrived, and now we live in a world transformed by God's grace. Through your gifts to Lutheran Disaster Response, you share the everlasting joy of that transformation with our neighbors around the world.

Your Spirit-filled generosity helps families and communities reeling from disasters here in the United States and across the globe. No matter the disaster, no matter the need, your gifts to Lutheran Disaster Response enable people to rebuild their lives and livelihoods now and far into the future.

Jesus was born to reign in us forever. Now you are inviting countless others into his gracious kingdom. Thank you.

In Christ,

The Rev. Robin Brown  
Director, Congregational Generosity

### **HELP BOTH OUR CHURCH AND OUR PLANET AT THE SAME TIME**

AELC is now using the Planet Green Recycling Program to collect used ink cartridges to send in to recycle and receive money back to be **used in support of the church's Mission Trip program**. A collection box is in the vestibule for dropping off your used ink cartridges for us to submit to Planet Green Recycling.

If you wish to mail them in yourself from home, please follow the steps below:

- Open the following link on your computer: <http://www.planetgreenrecycle.com/>
- Click on item 2 "Free USPS Label"
- Fill in label request
  - Your first & last name
  - Your email address
  - Organization Program Code: Enter 31821
  - Address – Enter Church Address: 1327 Alleghenyville Rd, Mohnton, PA 19540
  - Identify how many cartridges. **YOU MUST SEND AT LEAST 4**
- You will receive a prepaid label in your email to mail the cartridges
- Box up the cartridges, attach the label and drop off at post office

The church receives funds directly from Planet Green Recycling, \$1.00 for every cartridge (commonly used cartridges). **If you choose to mail in your cartridges yourself, it is very important to make sure to include the church's Organization Program Code (31821) so we receive the credit for the cartridges. No toner cartridges accepted.**

*Thank you for your support of the AELC Mission Trip Program!*

### **GROUNDS CLEAN-UP MAINTENANCE BOOK**

The Property Committee has created a book for you to sign-up to clean a specific grounds area and to maintain on an on-going basis. Please look through the book on the table in the lobby and if you have an interest in keeping the grounds in good shape or just enjoy working outside, pick an area and sign your name. When you and your group want to do the clean-up/maintenance is whatever works best for you and your time schedule. If you have questions or concerns, please contact a member of the property committee.



The biggest communions were Spring and Fall. People who did not worship regularly would show up Spring and Fall for Communion so that their membership was maintained.



**March Birthdays**

- 1 Patricia Ebling
- Chad Hatt
- 3 Dorothy Smith
- 4 Jessica Angstadt
- 5 Corrine McCurley
- 6 Rodney High
- 8 Lynne Scheetz
- 9 Erik Peterson-Smith
- 10 Michael Weitzel
- Jessica Fiant
- 12 Thaddeus Ganster
- 16 Melvyn Smith
- Helen Heath
- 17 Lucille Spangler
- Bennett Moczydlowski
- 18 John Messner
- Allison Eshleman
- 20 Anne Mae Peterson
- 21 Nicole Heath
- Alexis Thomas
- Jaxon Thomas
- 24 Kate Naugle
- 25 Michael Kline
- 27 Lauren Lorah
- 29 Garry Forrer
- Ann Deibert
- 30 Kristen Kintzer
- 31 Vincent Bruno

**March Anniversaries**

- 20 Anna Mae & Karl Peterson (1965)
- 24 Loretta & Don Lamont (1956)
- Sheri & Michael Kaufman (1996)
- 26 Ann & Michael Deibert (1994)
- 29 Colette & Kim Price (1987)

**AELC Prayer Ministry**

Recognizing the importance of prayer for our congregation and the world, AELC has a prayer ministry that communicates needs in various ways. We primarily communicate through a weekly email and listing prayers in the Sunday bulletin. We also have a closed Facebook group to share emergency requests and praises.

To receive the weekly email, send requests, updates or praises - please email Steve Cope at [prayerlist@aelc.org](mailto:prayerlist@aelc.org) or the church office at [office@aelc.org](mailto:office@aelc.org). You may also call the church office to leave a request. If you would like to be a part of the Facebook group, please let Steve know so you can be added.

There is a Prayer Request box and slips in the lobby. Feel free to add requests this way; it will be checked weekly. When adding someone to the list, please make sure you have their permission. Additionally, if you do not use email or social media and would like to be a part of this ministry, please leave your name and phone number with Steve or the office and we will communicate with you in a way that works for you!

**AELC Home Worshippers**

Please keep these Home Worship members in your thoughts and prayers:

Ron Austin, Pastor Charles, Larry Craley,  
Pat Hiester, John Messner, Janet Orth,  
Paul Pray, and Malcolm Reider

**Looking Ahead...**

Our next newsletter is the **April** issue. If you have content for the newsletter, please submit your articles by **March 15** to the church office via email at [office@aelc.org](mailto:office@aelc.org) or in Dee Constable's mailbox.

**Newsletter**



**NOTICE**

Please help our Safety and Property Committee by making sure **all** doors are **closed** and **locked** when you leave the building. Your continued help with this matter makes us and the church a safer place.

If there are any issues with the church property that need to be addressed contact Rod High first at 610-856-1386 or if no reply then contact Jim Spangler at 717-445-6537.

Thank you!



**AELC  
Church  
Council**

Ex-Officio	Pastor Zach Labagh
President	Joe Hickson
Vice President	John Thomas
Secretary	Tammy Taylor
Council Members	Greg Horton
	Ellie Loose
	Lynne Scheetz
	Gayle Tomasko
	Andrew Zirkel
Council Treasurer	Bill Baxter
Council Financial Secretary	Colette Price



**Men's Group**

**Bible & Brew is taking a break until the spring. Please look for monthly emails from Pastor Zach**

**All services  
on  
Facebook  
can be  
found:**



on the church  
page <https://www.facebook.com/matthew44>

or on the church website <https://www.aelc.org/podcasts/media>



**MARCH**

**March 2—Ash Wednesday**

8-9:30 am, 11:30-1pm—Drive by Ashes  
7:00 pm Ash Wednesday Service

**March 6, 13, 20, 27**

8:30 am Traditional Worship  
9:00 am CAT Class/Faith Formation  
9:30 am Adult Faith Formation  
9:30 am Sr. High Faith Formation (6 & 20)  
10:30 am Praise Worship

**March 9, 16, 23, 30**

6:00 pm Midweek Lenten Worship/Study  
(Online)