



# Alaska Department of Transportation & Public Facilities

## Glenn Highway Capacity Improvement (Eagle River Bridge)

Shannon McCarthy, DOT&PF Public Information Officer  
Tal Maxwell, DOT&PF Project Manager

April 1, 2020

Our mission is to **Keep Alaska Moving** through service and infrastructure.

Carzilla is Coming!

 **Glenn Hwy**  
Capacity Improvement

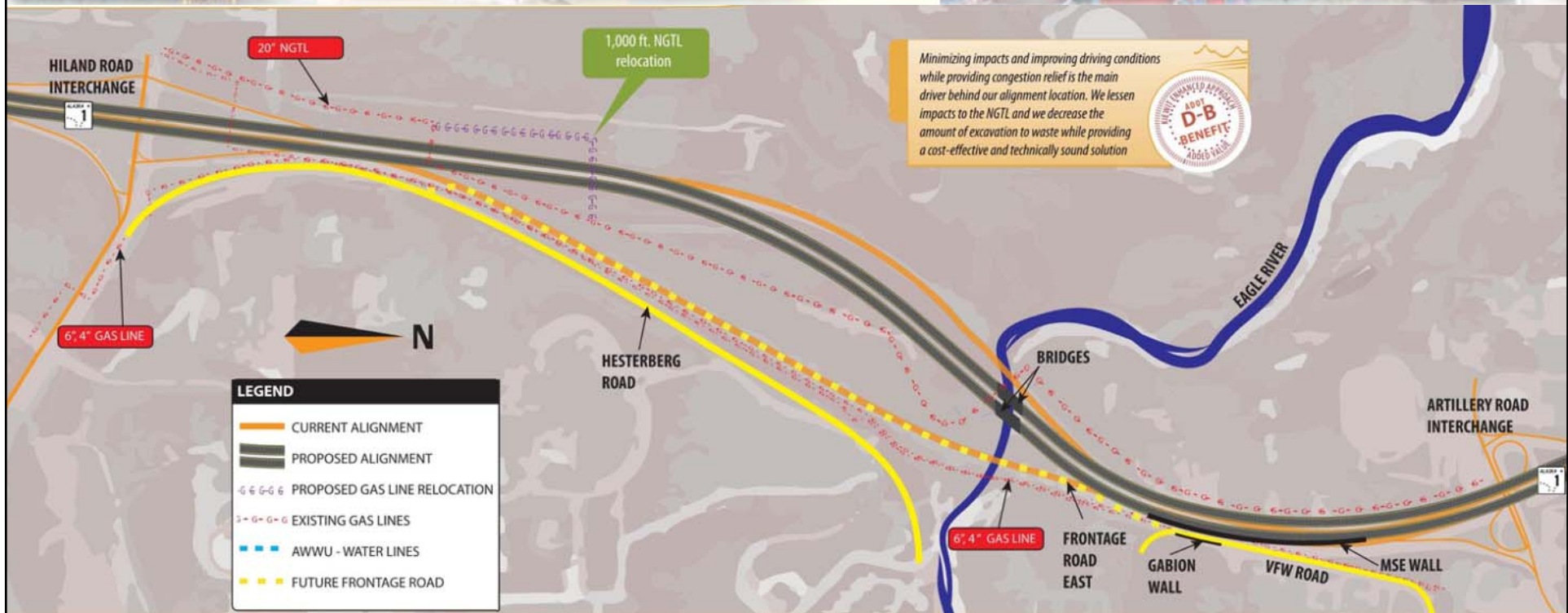
# CARZILLA



# 2020



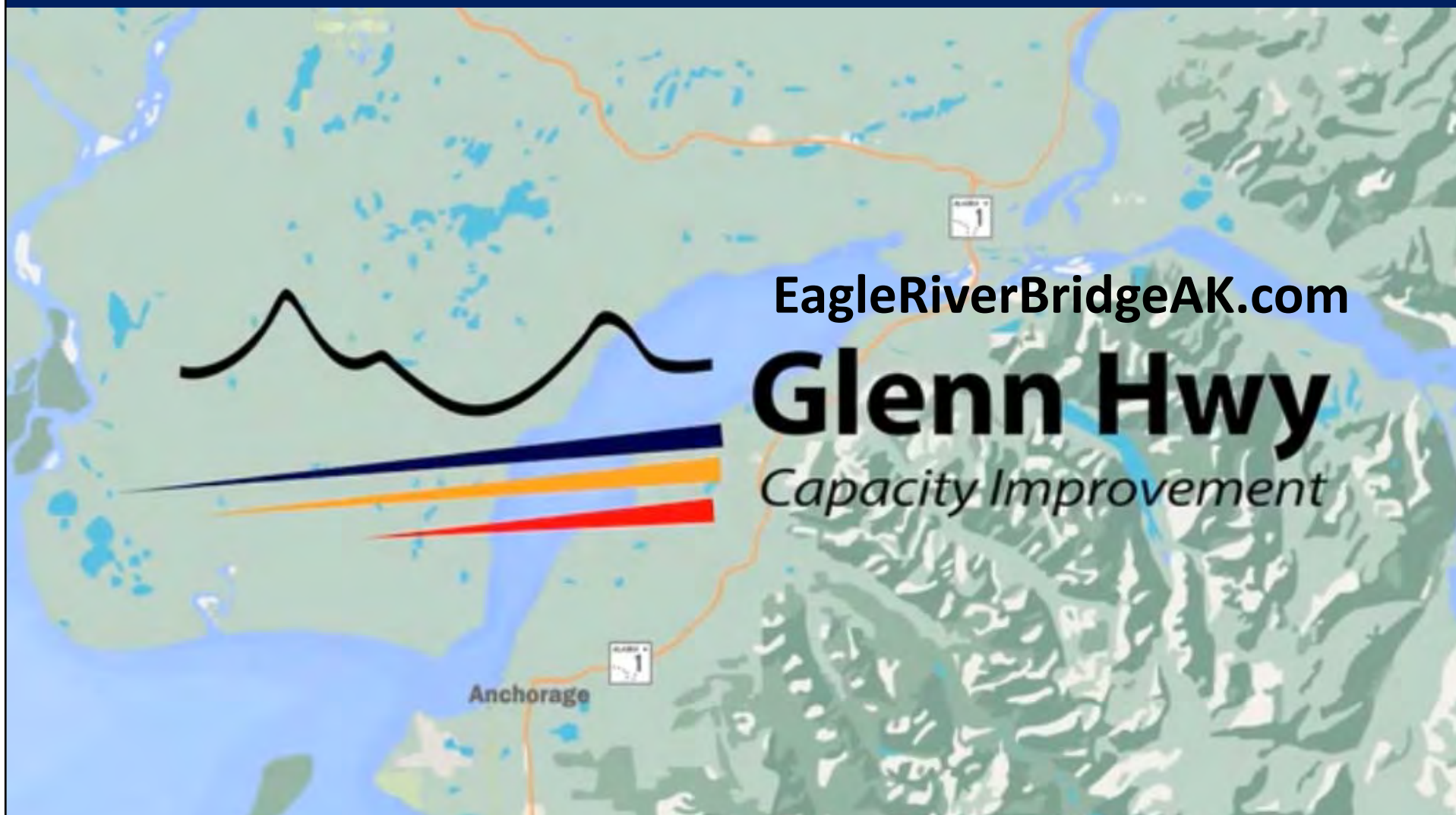
# Improving the Glenn & Local Access



- More driving lanes, wide shoulders, improved ramp access, and room for future growth on Glenn Highway
- Bridges built to seismic standards
- Extended Eagle View Drive into new frontage road



# Project Overview Video





# Previous and Upcoming Work Phases

**Phase 2 Work – Green – In Progress**  
**Phase 1 Work – Red – Complete**

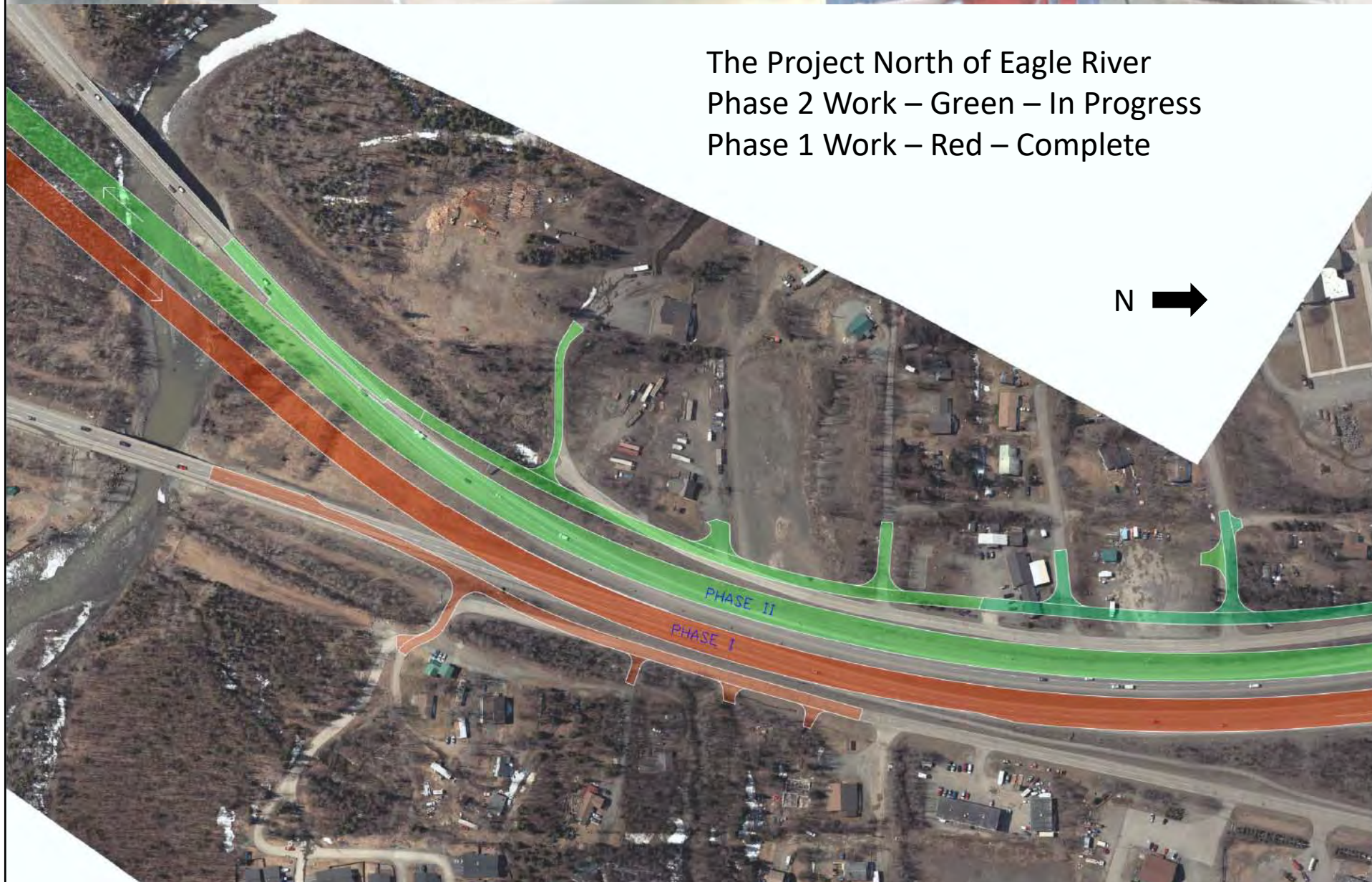
Hiland Road  
Interchange





# Detail of Upcoming Work

The Project North of Eagle River  
Phase 2 Work – Green – In Progress  
Phase 1 Work – Red – Complete





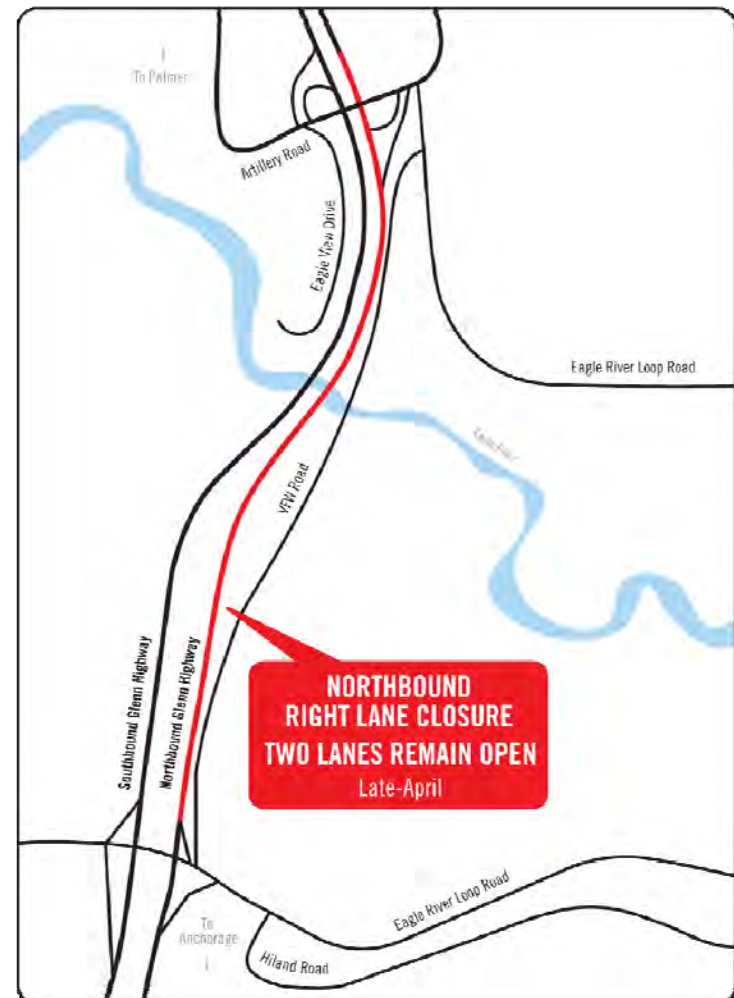
# Artillery Bridge Repairs



During this time, the previously damaged girders on the Artillery Road bridge will be repaired and replaced.

# Traffic Impacts: Late April to May

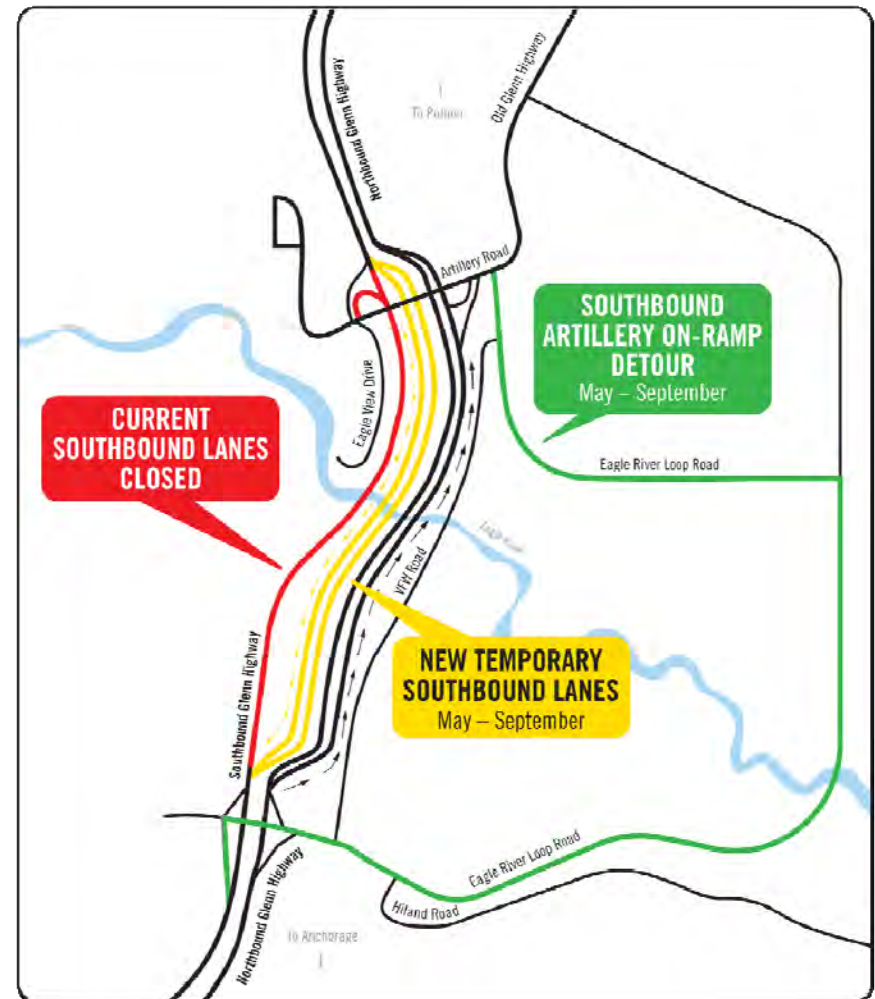
- Beginning about Monday, April 27<sup>th</sup>, and lasting about 10 days
- Northbound traffic to be reduced to two lanes just north of the Hiland overpass





# Traffic Impacts: May to Completion

- Southbound traffic routed onto the Northbound Glenn Highway from just north of the Artillery Road bridge to just south of the Hiland overpass
- Two lanes of traffic in each direction, divided by concrete barriers
- Early May: southbound Glenn Highway Artillery Road on-ramp access will be shut down
- Current Eagle View Drive frontage road access remains open



# Traffic Impacts: May to Completion



# CARZILLA 2020



- Expect significant traffic slowdowns and narrow shoulders.
- Please drive safely through the construction zone and follow all posted traffic signs.



Completion: Fall 2020



# Getting the Word Out

- Social media
- Household & business mailer
- News coverage
- Radio & newspaper ads
- Spotify ads
- Virtual presentations
- [www.AlaskaNavigator.com](http://www.AlaskaNavigator.com)
- ...and more!







# Send Us Your Questions

- **Project Hotline: 844-767-9907**
- Tal Maxwell, Project Engineer
  - Alaska Department of Transportation and Public Facilities
  - PO Box 19600 MS-2525s
  - Anchorage, Alaska 99519-6900
  - [tal.maxwell@alaska.gov](mailto:tal.maxwell@alaska.gov)





# Online Resources

- [EagleRiverBridgeAK.com](http://EagleRiverBridgeAK.com) for project information and to join the email list
- [AlaskaNavigator.org](http://AlaskaNavigator.org) for construction information
- [511.Alaska.Gov](http://511.Alaska.Gov) for road conditions and construction information

