

# Economic Development Week

TxDOT Infrastructure Projects – UTP – Funding Categories



May 15, 2024

# HELP #EndTheStreakTX

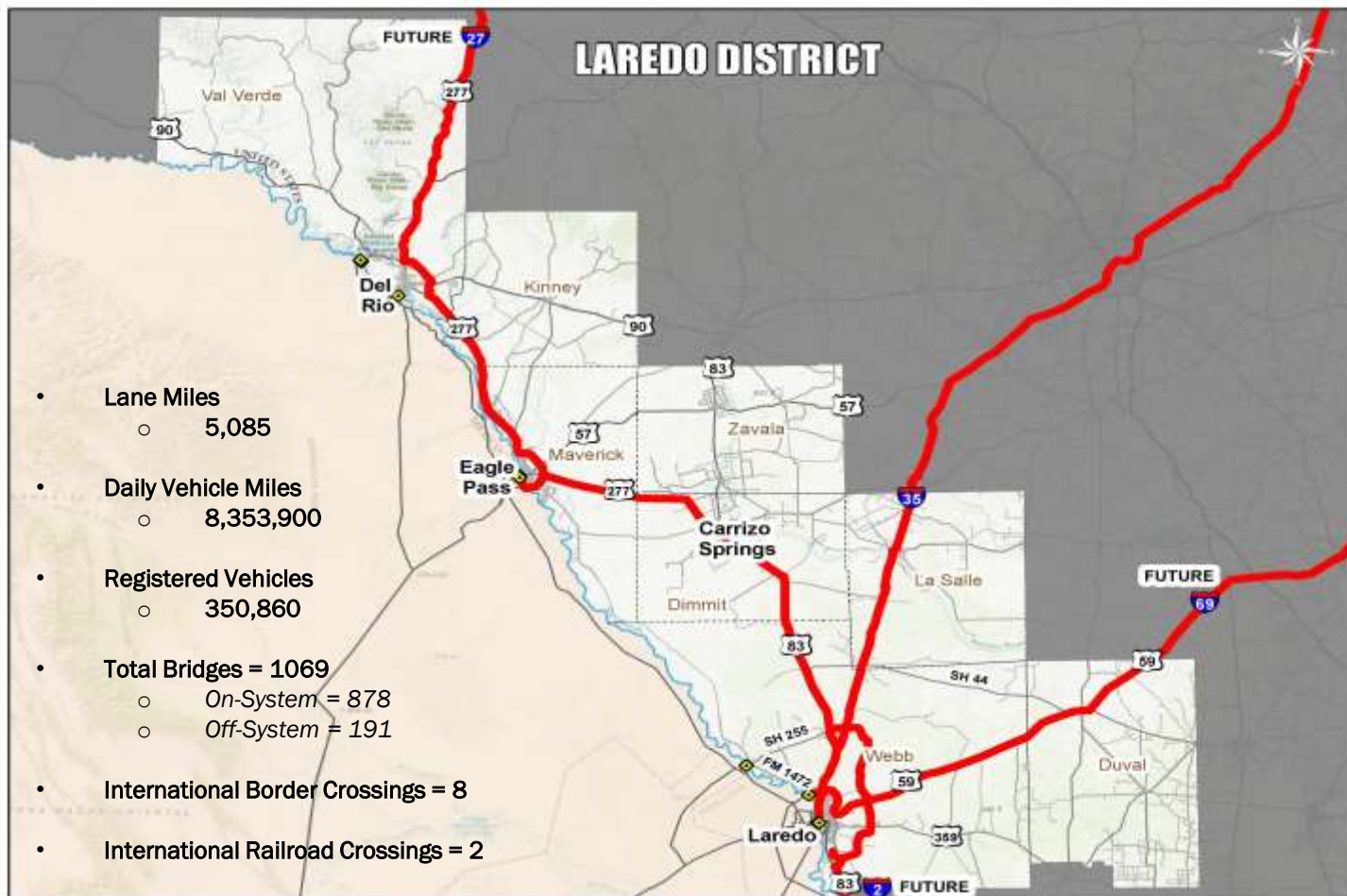
End the streak of daily deaths on Texas roadways.

**TxDOT.gov** (Keyword: #EndTheStreakTX)

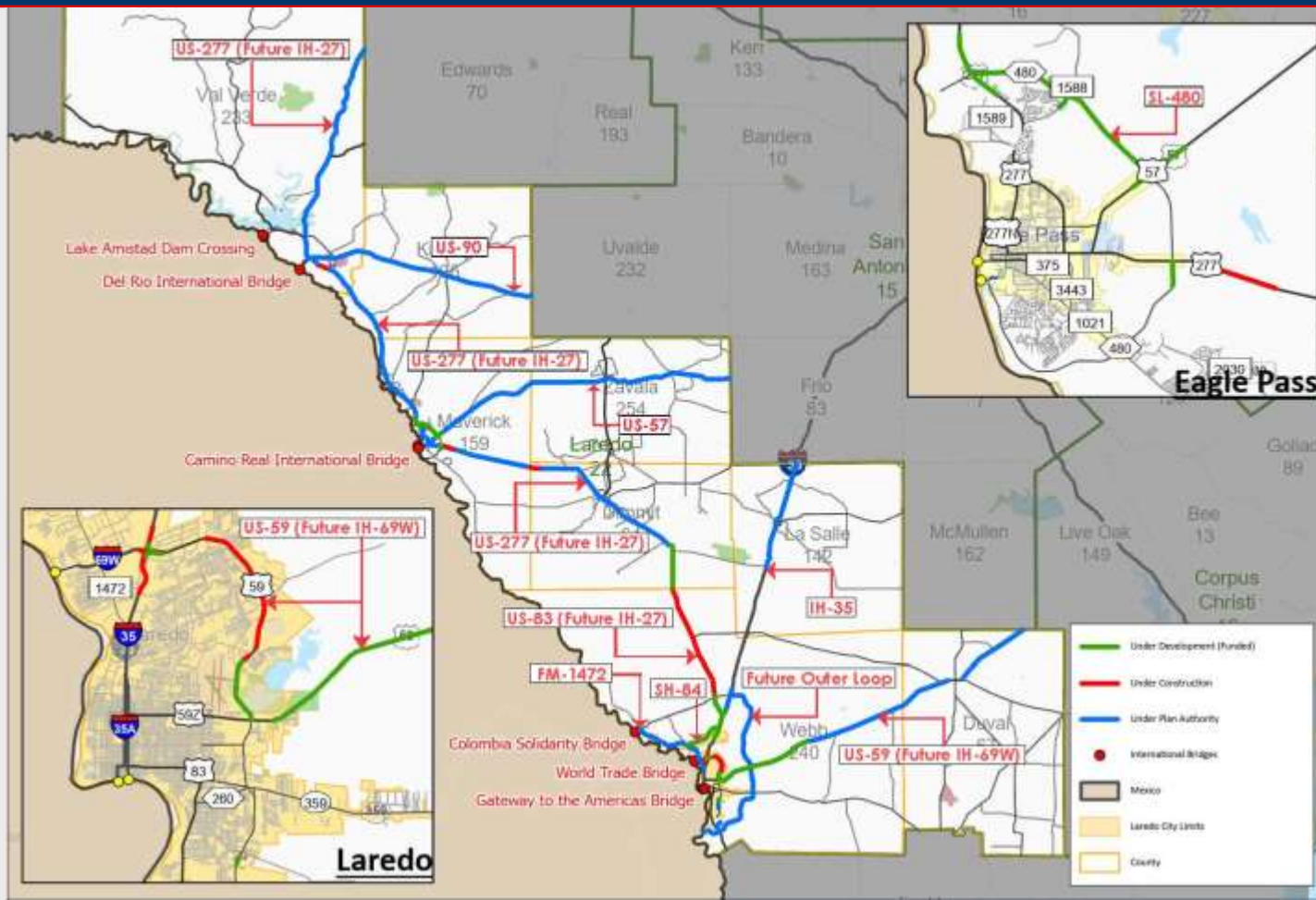


#EndTheStreakTX Toolkit









# Table of Contents

- 1** | Unified Transportation Program (UTP)
- 2** | UTP development schedule
- 3** | Funding categories
- 4** | Laredo District projects under construction
- 5** | Laredo District projects under development – Funded
- 6** | Laredo District projects under development – Not funded
- 7** | Laredo District long range projects

# UNIFIED TRANSPORTATION PROGRAM (UTP)

# TxDOT Family of Planning and Programming Documents

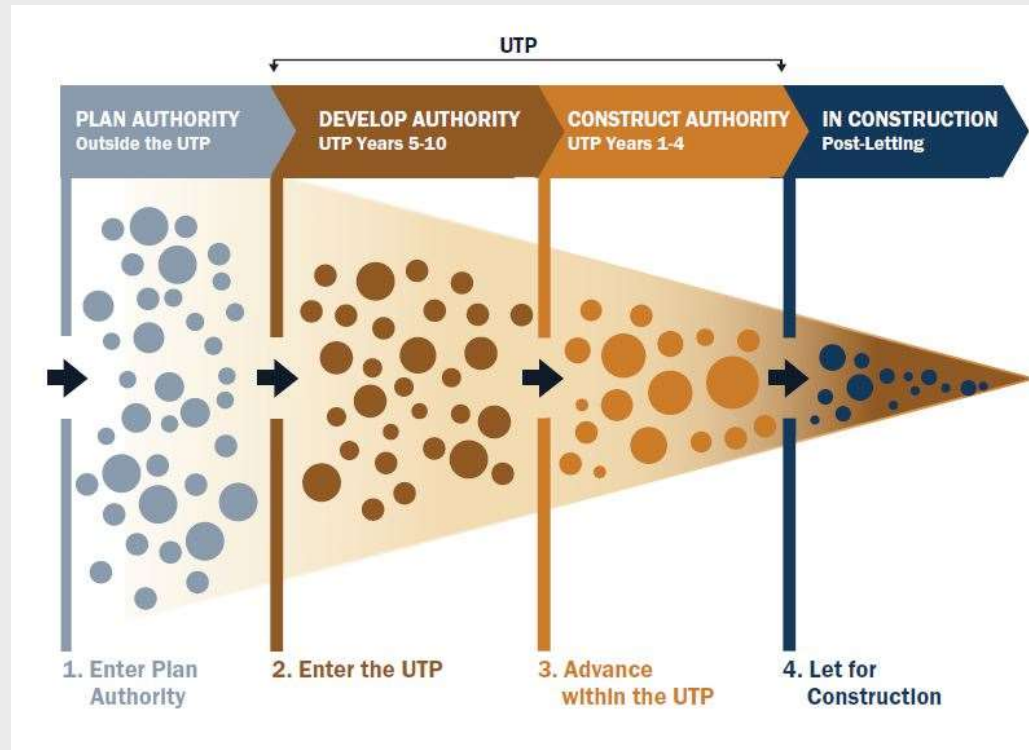


## What is the Unified Transportation Program (UTP)?

- TxDOT's 10-year plan that guides the development of transportation projects across the state.
- Determines how much transportation funding the state expects to have over the next decade and how to distribute it.
- Organizes funding into 12 categories that focus on different types of transportation projects.
- Includes all transportation projects that TxDOT is developing for construction over the next 10 years.
- Required by state law to be approved by the Texas Transportation Commission each year by August 31. May be updated more frequently to authorize a major change to funding allocations or listed projects.
- The UTP lays out TxDOT's commitments to develop certain transportation projects over the next 10 years. However, the UTP is not a construction budget and does not guarantee that all projects will be built.
- The plan authorizes TxDOT and local partnering agencies to prepare projects for construction based on the potential future cash flow. However, funding levels may change in the future, which may in turn affect TxDOT's plans.



# TxDOT Project Path & Selection Methodology



## STATEWIDE PRIORITIES AND SYSTEM NEEDS

### Safety

- Fatalities per Year and Fatality Rates

### Congestion

- 100 Most Congested Roadways
- TxDOT Congestion Task Force Projects
- Urbanized Area Population

### Connectivity

- National Highway System
- Texas Highway Trunk System
- Texas Freight Network
- Key Rural Corridors
- Energy Sector Regions
- Hurricane Evacuation Routes
- Truck Traffic Volume

## PROJECTED PROJECT PERFORMANCE

### Safety

- Impact on Fatalities and Fatality Rates
- Impact on Crashes and Crash Rates

### Preservation

- Reduction in Poor Pavement and Deficient Bridges

### Congestion

- Impact on Congestion (Car and Truck)

### Connectivity

- Lane Miles of New Connectivity

### Economic Development

- Economic Importance and System Usage

### Environment

- Impact on Environment

PROJECT SCORE

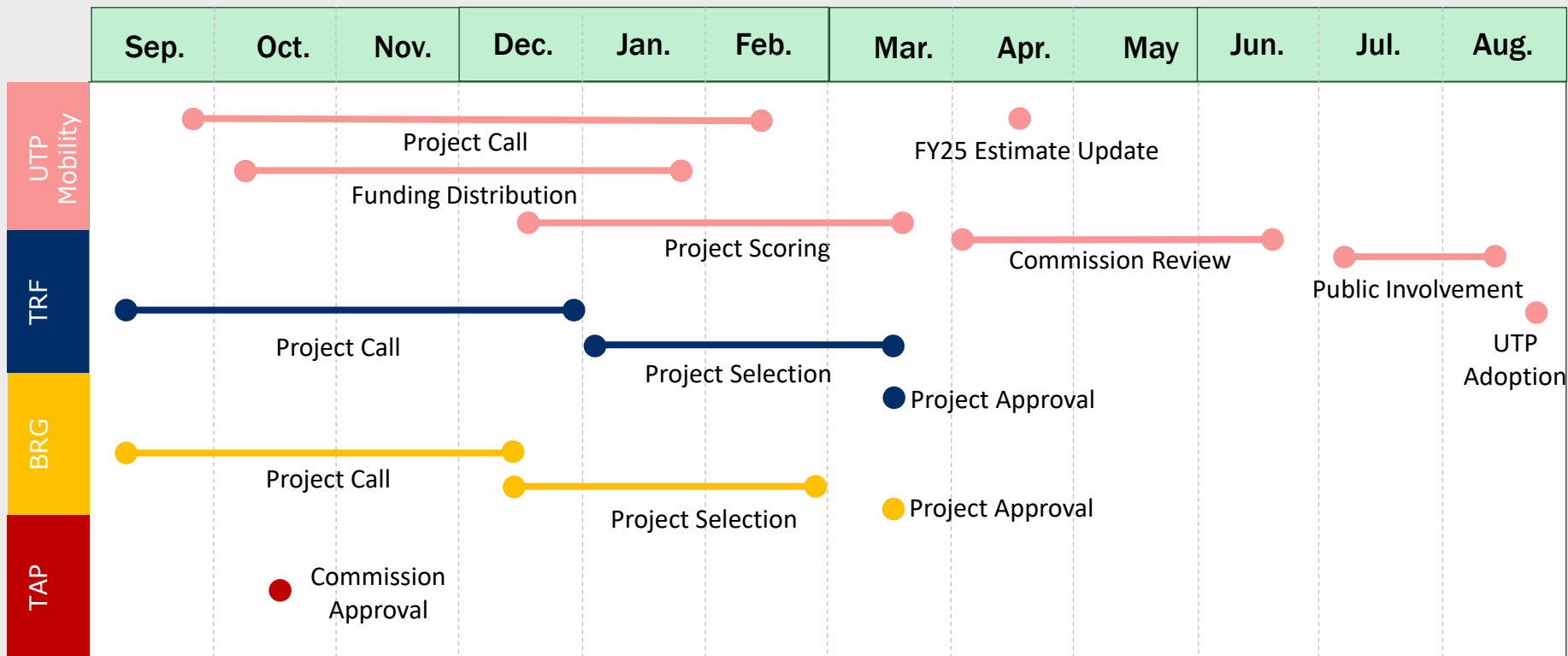
LOCAL PRIORITIES

MPOs & Districts

PROJECT RECOMMENDATIONS

# UTP DEVELOPMENT SCHEDULE

# 2025 UTP Development Schedule Sep. 2023 – Aug. 2024

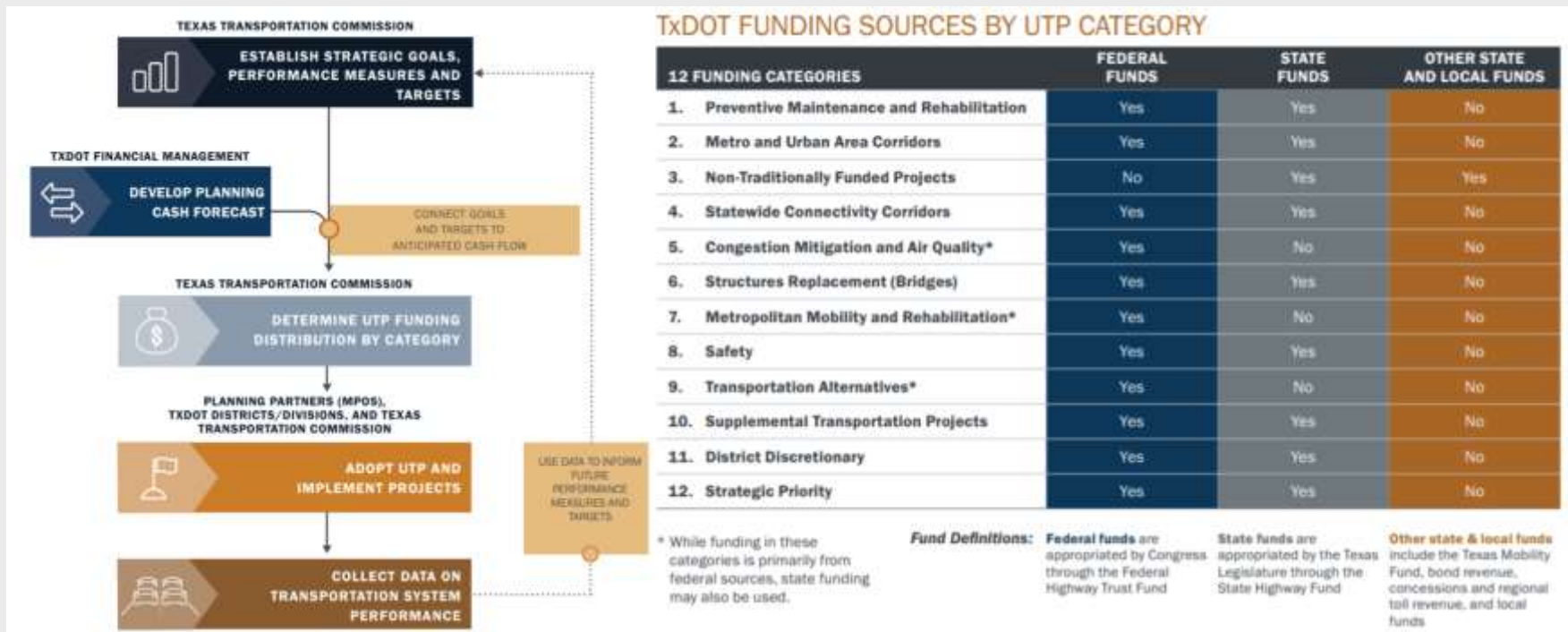


# FUNDING CATEGORIES

## What are funding categories?

- The Texas Transportation Commission (TTC) determines funding levels in each UTP category, and this framework allows the Commission to direct the UTP's overall investment strategy based on the current needs of the state. Financial forecasting is one of TxDOT's critical functions when developing the Unified Transportation Program (UTP).
- The UTP is organized into 12 funding categories. The funding within most categories comes from a mixture of state funds appropriated by the Texas Legislature and federal highway funds appropriated by Congress. Traditional funding sources, like the State's motor fuel tax and vehicle registration fees, generally follow a stable trend line from year to year, however, some newer sources, like oil and gas production taxes from Texas Proposition 1, are more susceptible to fluctuations in the economy or the state budget.
- The UTP is fiscally constrained by the planning cash forecast, which means TxDOT can only develop projects that it can afford to execute within potential funding limits. For TxDOT to have the right volume of projects ready for construction in the years ahead, the UTP must be based on a reasonable estimate of future cash flow.

# UTP Development Cycle and 12 Funding Categories





## Common Project Types in the UTP Funding Categories

Category	Common Project Types
<b>Category 1 – Preventive Maintenance</b>	Roadway resurfacing & rehabilitation
<b>Category 2 – Metro and Urban Corridors (MPOs)</b>	Urban road capacity, Interchanges
<b>Category 3 – Non-Traditional Funds</b>	Various
<b>Category 4 – Statewide Connectivity</b>	Regional corridor capacity
<b>Category 5 – Congestion Mitigation and Air Quality</b>	Intersection & interchange improvements
<b>Category 6 – Bridge</b>	Bridge replacement & repair
<b>Category 7 – Metro Mobility (Large MPOs)</b>	Urban transportation improvements
<b>Category 8 – Safety</b>	Medians, shoulders, signals, guard rails, rumble strips, grade separation, etc.
<b>Category 9 – Transportation Alternatives</b>	Bike & pedestrian infrastructure
<b>Category 10 – Supplemental Transportation</b>	Border infrastructure, State park roads
<b>Category 11 – District Discretionary</b>	Roadway resurfacing, Passing lanes
<b>Category 12 – Strategic Priority</b>	Urban and rural road capacity

## 2024 UTP Funding Distribution by Category

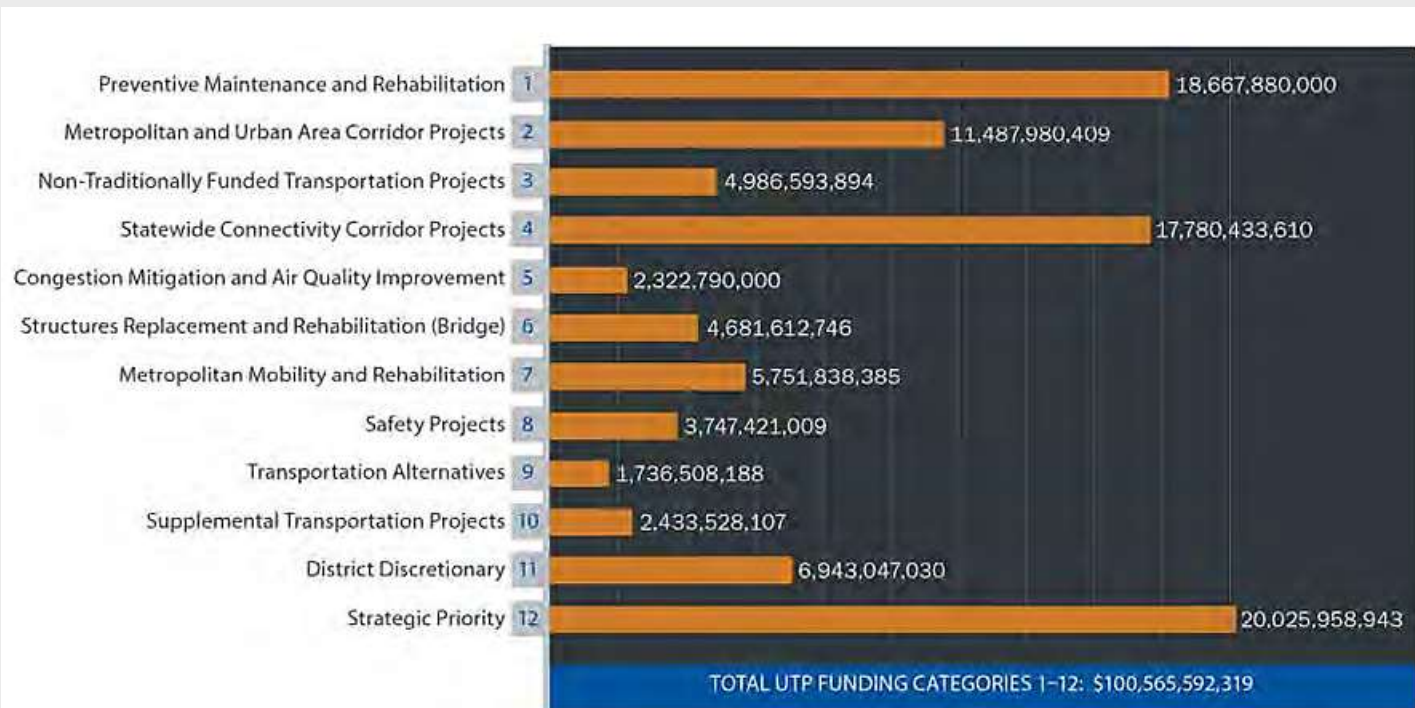


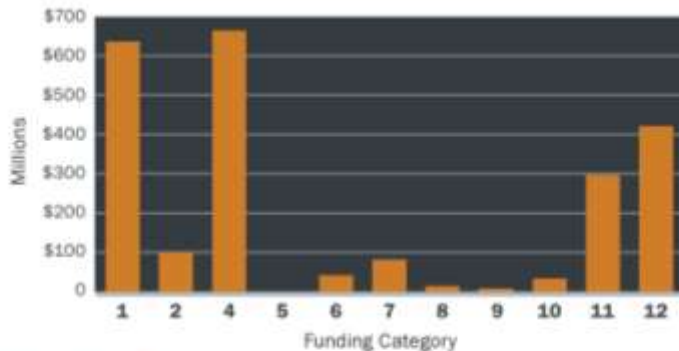
Figure 5 has been replaced after initial publication due to a typographical error and has been updated with a Figure that accurately reflects the amounts allocated by the Texas Transportation Commission pursuant to Appendix III – UTP Funding Tables.

## 2024 – 2033 UTP Laredo District Program Funds

CATEGORY	FY 23 CARRY OVER	FY 24	FY 25	FY 26	FY 27	FY 28	FY 29	FY 30	FY 31	FY 32	FY 33	2024 UTP TOTAL
Category 1: Preventive Maintenance and Rehabilitation	\$ (38.03)	\$ 99.30	\$ 79.20	\$ 67.40	\$ 57.80	\$ 55.50	\$ 56.50	\$ 56.30	\$ 55.40	\$ 53.60	\$ 54.70	\$ 597.67
Category 2: Metropolitan and Urban Corridor Projects	\$ -	\$ 15.36	\$ 18.45	\$ 9.90	\$ 10.27	\$ 10.50	\$ 6.90	\$ 8.19	\$ 7.47	\$ 6.29	\$ 6.51	\$ 99.84
Category 4: Statewide Connectivity Corridor Projects - Urban	\$ -	\$ 9.00	\$ 11.00	\$ 8.90	\$ 6.50	\$ 5.70	\$ 5.70	\$ 5.70	\$ 5.30	\$ 4.70	\$ 4.80	\$ 67.30
Category 4: Statewide Connectivity Corridor Projects - Regional	\$ -	\$ -	\$ 65.00	\$ -	\$ 167.20	\$ 61.40	\$ -	\$ -	\$ 301.73	\$ -	\$ -	\$ 595.33
Category 7: Metropolitan Mobility and Rehabilitation	\$ 55.42	\$ 8.15	\$ 8.31	\$ 8.48	\$ 8.16	\$ 8.16	\$ 8.16	\$ 8.16	\$ 8.16	\$ 8.16	\$ 8.16	\$ 137.48
Category 9: Transportation Alternatives	\$ 3.83	\$ 0.94	\$ 0.96	\$ 0.98	\$ 0.94	\$ 0.94	\$ 0.95	\$ 0.95	\$ 0.95	\$ 0.95	\$ 0.95	\$ 13.34
Category 10: Carbon Reduction	\$ -	\$ 2.87	\$ 0.99	\$ 1.01	\$ 0.97	\$ 0.98	\$ 0.98	\$ 0.98	\$ 0.98	\$ 0.98	\$ 0.98	\$ 11.72
Category 11: District Discretionary	\$ 1.33	\$ 4.13	\$ 4.11	\$ 3.65	\$ 3.66	\$ 3.68	\$ 3.54	\$ 3.60	\$ 3.58	\$ 3.54	\$ 3.57	\$ 38.39
Category 11: Safety	\$ (0.38)	\$ 4.52	\$ 2.74	\$ 1.95	\$ 1.97	\$ 2.00	\$ 1.76	\$ 1.87	\$ 1.84	\$ 1.77	\$ 1.81	\$ 21.85
Category 11: Energy Sector	\$ (93.88)	\$ 105.33	\$ 19.56	\$ 16.26	\$ 14.27	\$ 13.79	\$ 13.75	\$ 13.82	\$ 13.60	\$ 13.15	\$ 13.42	\$ 143.07
Category 12 Strategic Priority Funding	\$ -	\$ 45.71	\$ 100.90	\$ 122.80	\$ 57.70	\$ 135.70	\$ -	\$ -	\$ -	\$ -	\$ -	\$ 462.81
							Cat 1, 4U, 4R, 11, 12 (District and Statewide Funds)					\$ 1,926.42
							Cat 2, 7, 9 (MPO Funds)					\$ 250.66
							Total					\$ 2,188.80

## Laredo District 10 Year Planning Targets by Category (2024 UTP)

Utilizing categories 4 & 10 fund, the district will complete the widening of I-35 and construction of interchanges along US 59/I-69 W in preparation for future IH 69W corridor. As part of the Ports-to Plains (I-27) initiative, the SL 480 project in Maverick County will be prioritized in order to complete this loop. Through strategic planning & partnership with the Laredo & Webb County Area Metropolitan Planning Organization (LW-CAMPO) and the Webb County-City of Laredo Regional Mobility Authority (WCCL- RMA) the district is able to strategically utilize Category 2, 7 & 12 funds to improve our regional mobility.



### TXDOT FUNDING CATEGORIES:

- |  |  |
|--|--|
| 1 Preventive Maintenance & Rehabilitation          | 7 Metropolitan Mobility & Rehabilitation |
| 2 Metropolitan & Urban Area Corridor Projects      | 8 Safety                                 |
| 3 Non-Traditionally Funded Transportation Projects | 9 Transportation Alternatives Program    |
| 4 Statewide Connectivity Corridor Projects         | 10 Supplemental Transportation Projects  |
| 5 Congestion Mitigation & Air Quality Improvement  | 11 District Discretionary                |
| 6 Structures Replacement & Rehabilitation          | 12 Strategic Priority                    |



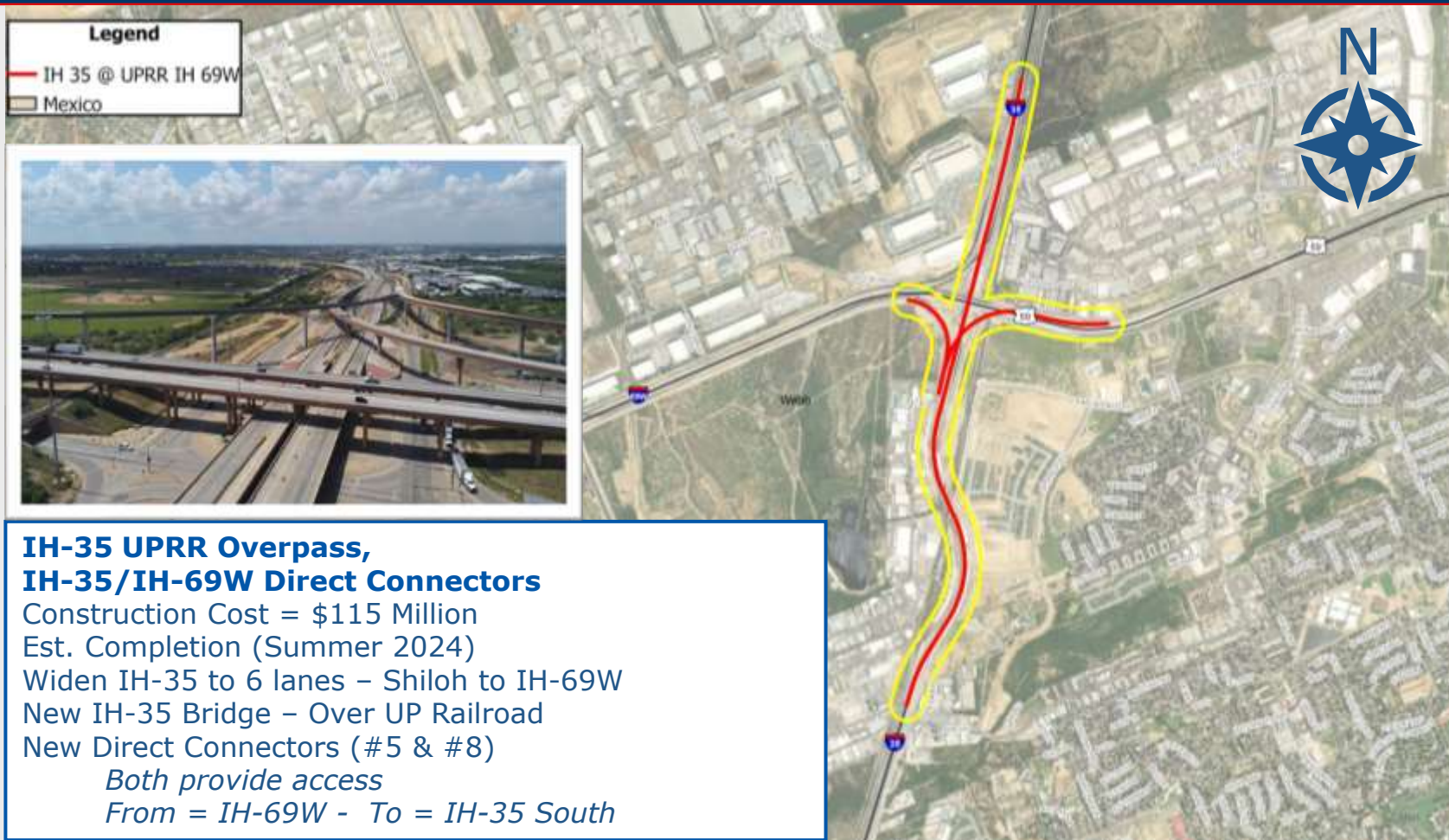
# PROJECTS UNDER CONSTRUCTION

**\$ 1.1 Billion in Projects  
Under Construction  
Laredo District**



**\$846 Million of that within the  
Laredo/Webb County**





### **IH-35 UPRR Overpass, IH-35/IH-69W Direct Connectors**

Construction Cost = \$115 Million

Est. Completion (Summer 2024)

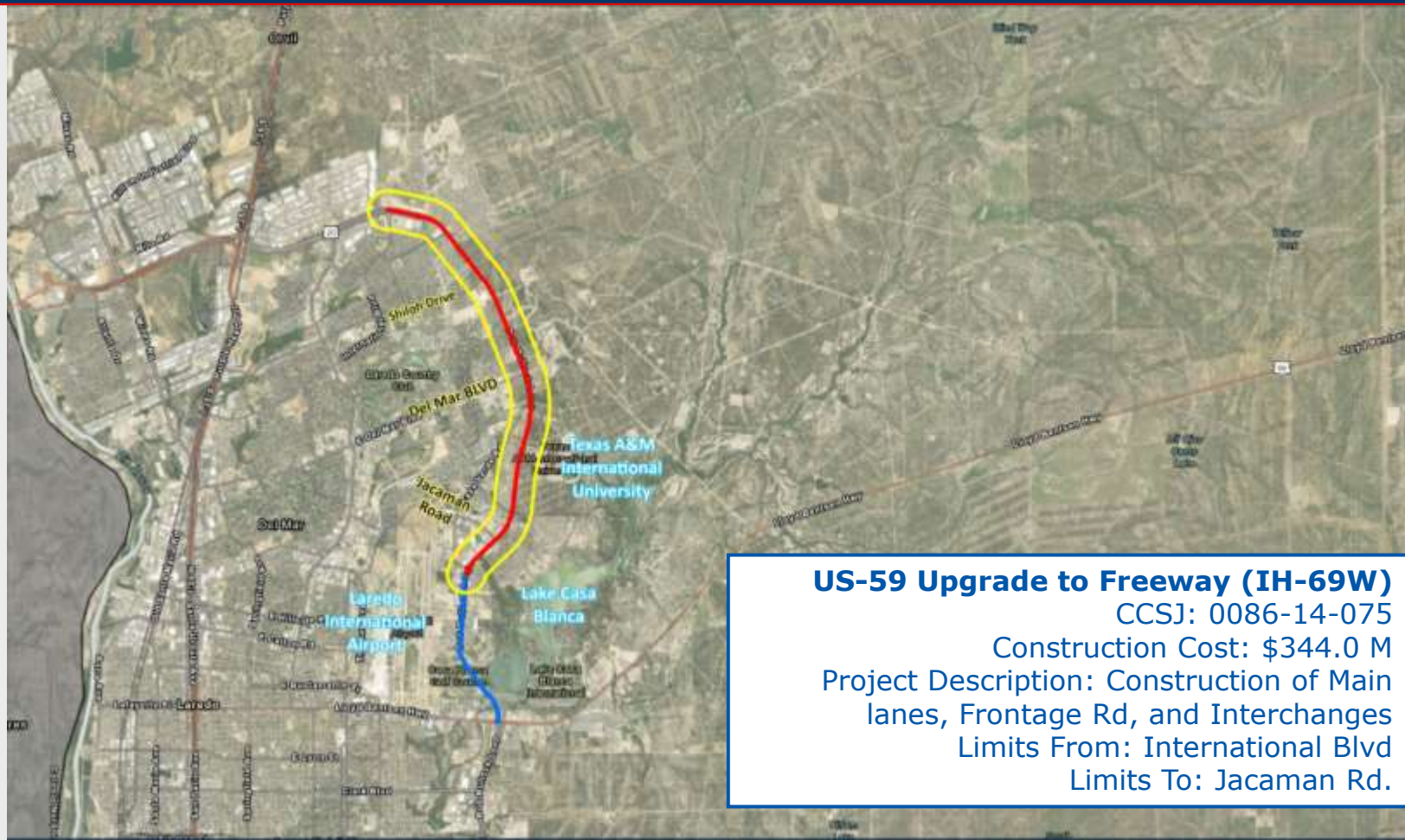
Widen IH-35 to 6 lanes – Shiloh to IH-69W

New IH-35 Bridge – Over UP Railroad

New Direct Connectors (#5 & #8)

*Both provide access*

*From = IH-69W - To = IH-35 South*



## US-59 Upgrade to Freeway (IH-69W)

CCSJ: 0086-14-075

Construction Cost: \$344.0 M

Project Description: Construction of Main  
lanes, Frontage Rd, and Interchanges

Limits From: International Blvd

Limits To: Jacaman Rd.





### SH-359 Widening

CSJ: 0086-01-073, etc.

Construction Cost: \$49.3 M

Project Description:

Widen Roadway from 3-Lane to 5-Lane

Undivided Highway

Limits From: 4.06 Miles East of SL 20

Limits To: 9.830 Miles East of SL 20



## SH 84 New 4-Lane Divided Hwy

CSJ: 3483-02-002

Construction Cost: \$147.6 M

Project Description: Construction of Four Lane Divided Highway

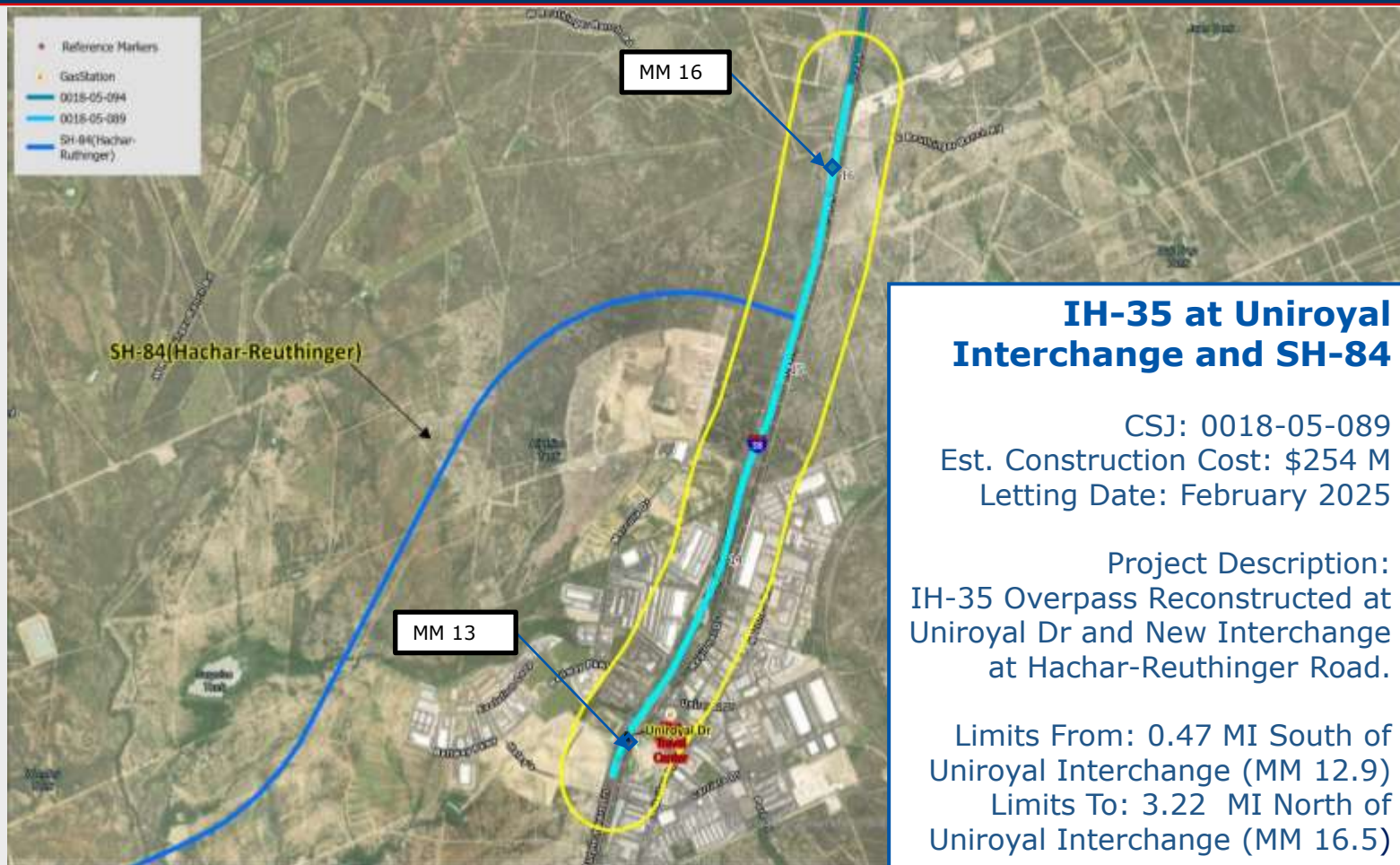
Limits From: IH 35

Limits To: FM 1472

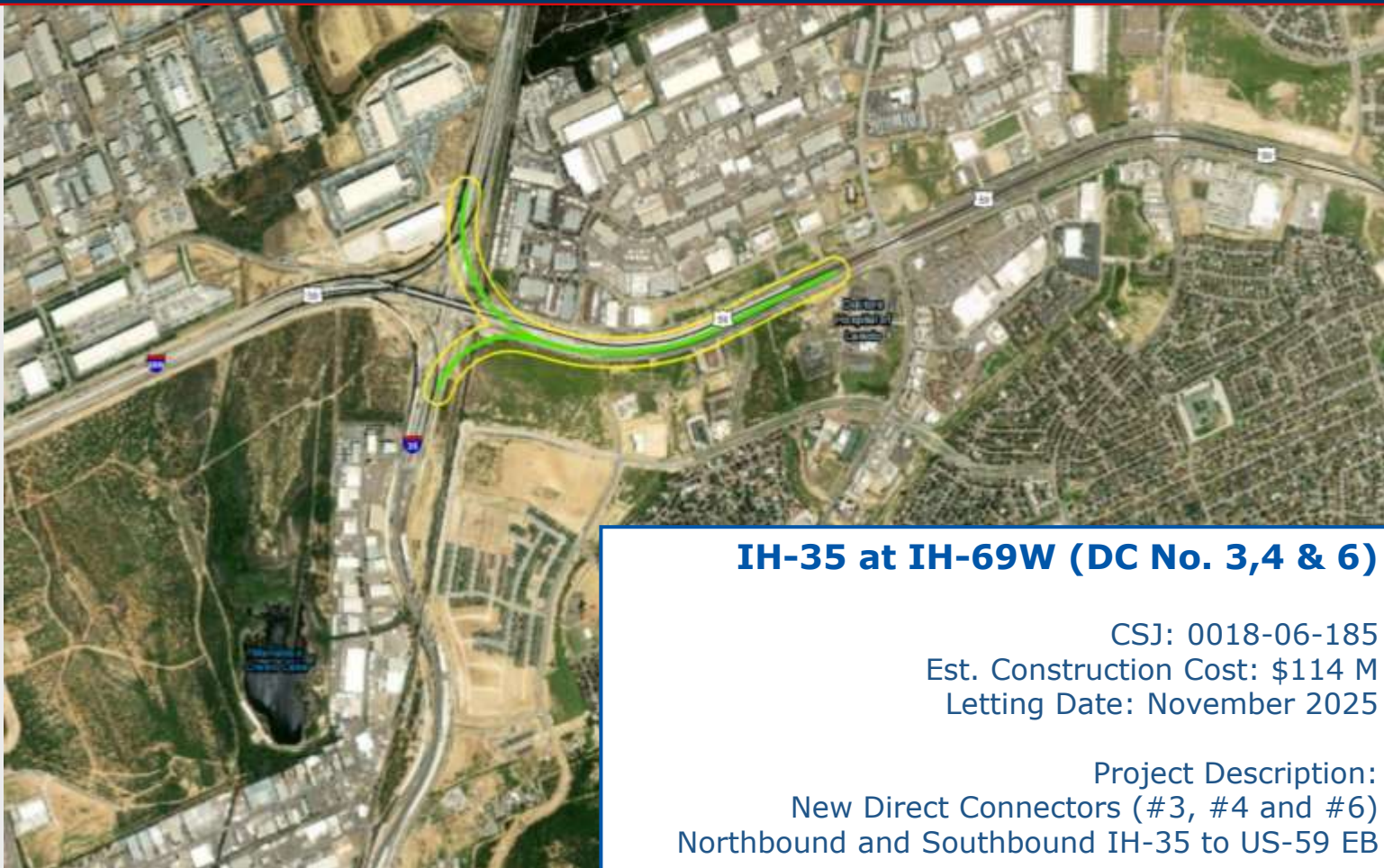


# PROJECTS UNDER DEVELOPMENT - FUNDED









## **IH-35 at IH-69W (DC No. 3,4 & 6)**

CSJ: 0018-06-185

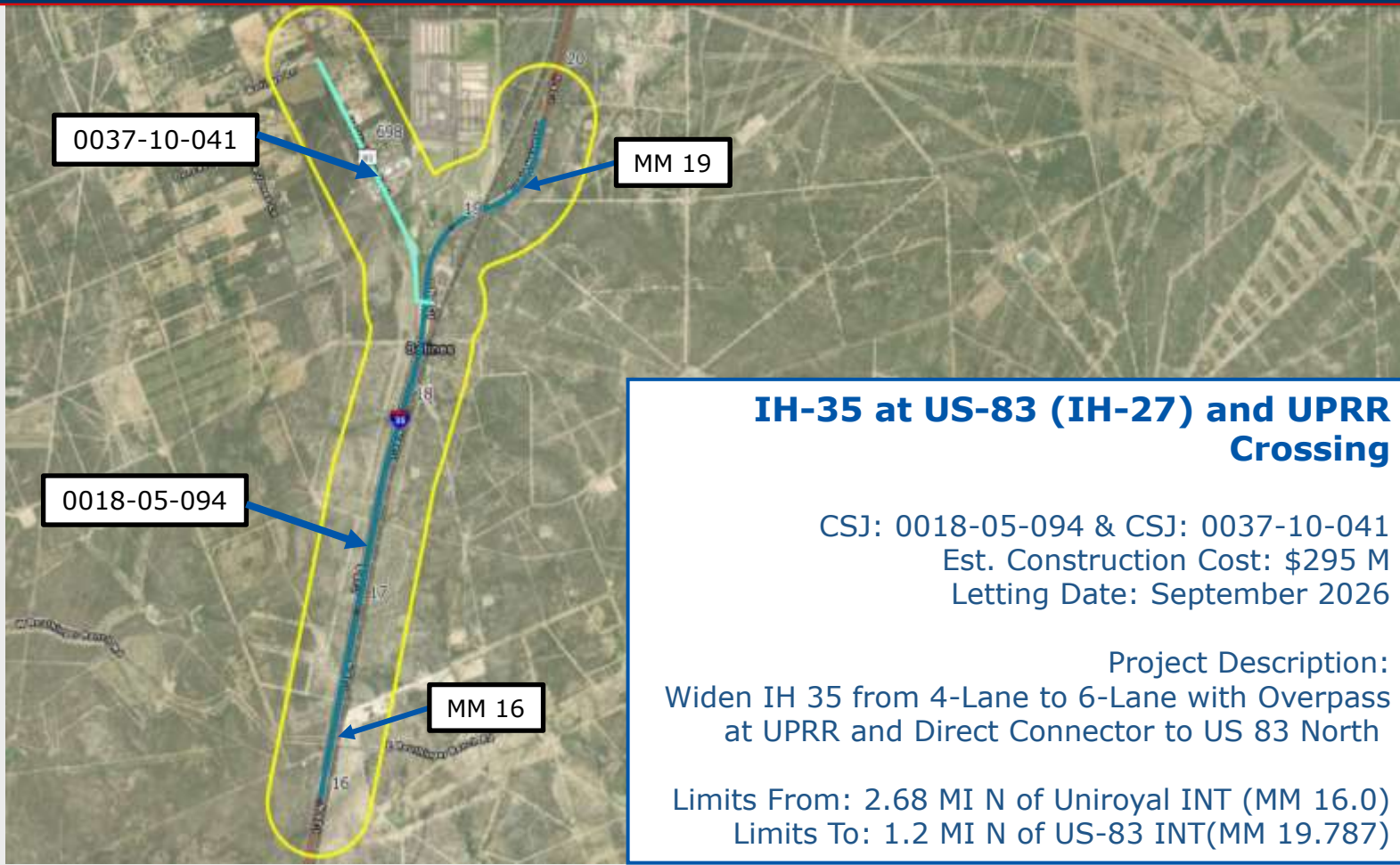
Est. Construction Cost: \$114 M

Letting Date: November 2025

Project Description:

New Direct Connectors (#3, #4 and #6)

Northbound and Southbound IH-35 to US-59 EB



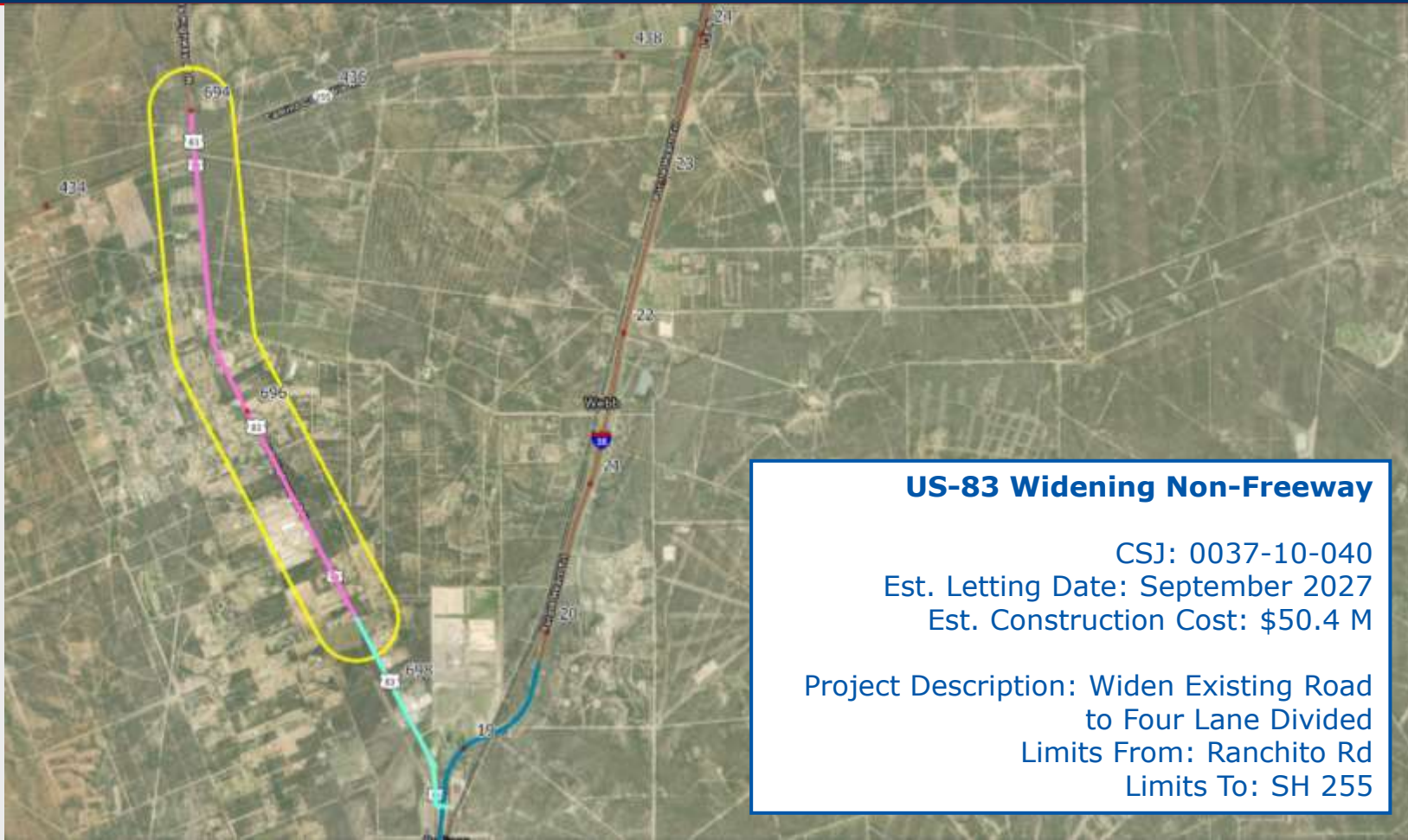
## **IH-35 at US-83 (IH-27) and UPRR Crossing**

CSJ: 0018-05-094 & CSJ: 0037-10-041  
Est. Construction Cost: \$295 M  
Letting Date: September 2026

Project Description:  
Widen IH 35 from 4-Lane to 6-Lane with Overpass  
at UPRR and Direct Connector to US 83 North

Limits From: 2.68 MI N of Uniroyal INT (MM 16.0)  
Limits To: 1.2 MI N of US-83 INT (MM 19.787)





### US-83 Widening Non-Freeway

CSJ: 0037-10-040

Est. Letting Date: September 2027

Est. Construction Cost: \$50.4 M

Project Description: Widen Existing Road  
to Four Lane Divided  
Limits From: Ranchito Rd  
Limits To: SH 255



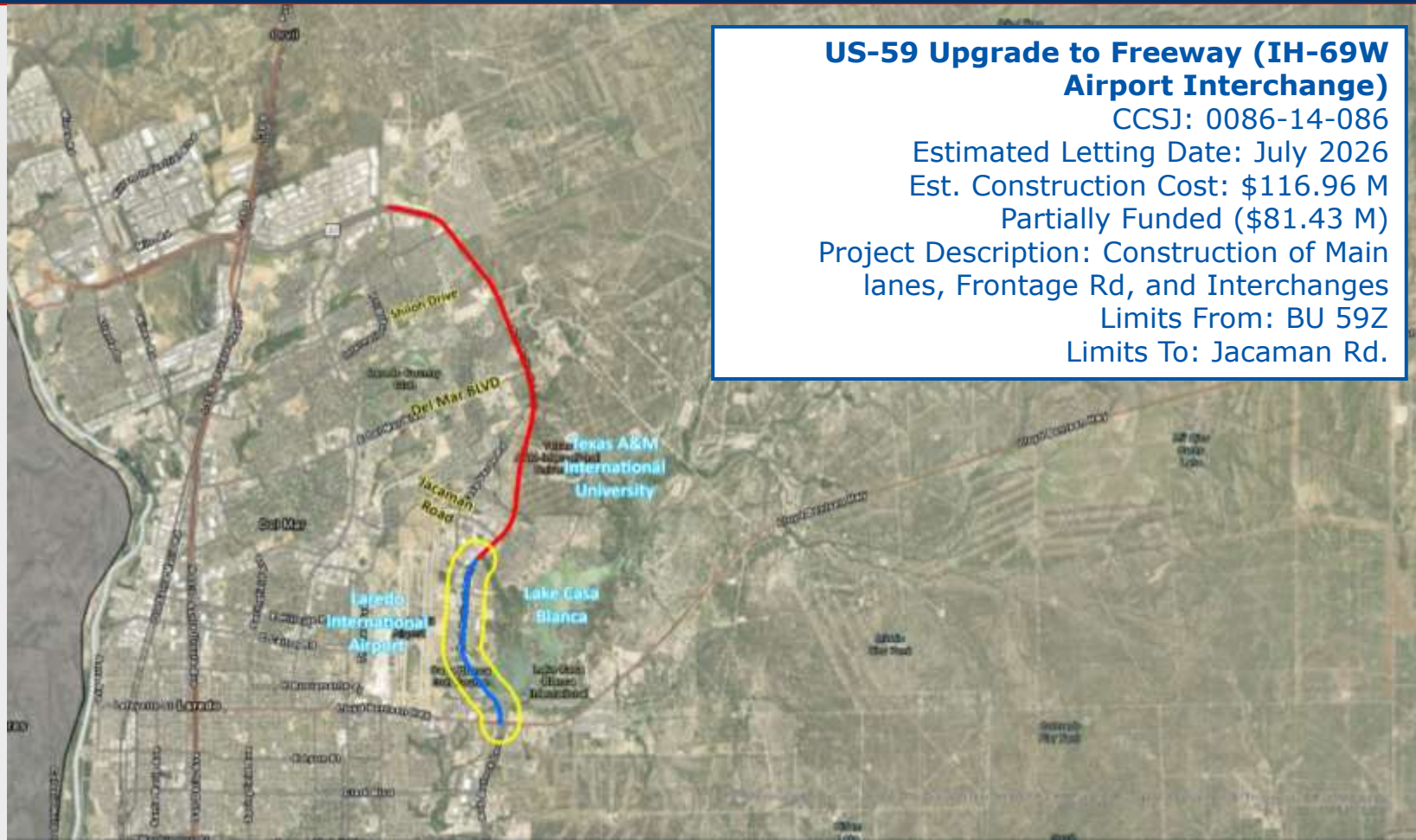
**SL 20 at Lomas del Sur  
Interchange**

CSJ: 0086-16-008

Est. Letting Date: November 2024

Est. Construction Cost: \$42.0 M





## US-59 Upgrade to Freeway (IH-69W) Airport Interchange

CCSJ: 0086-14-086

Estimated Letting Date: July 2026

Est. Construction Cost: \$116.96 M

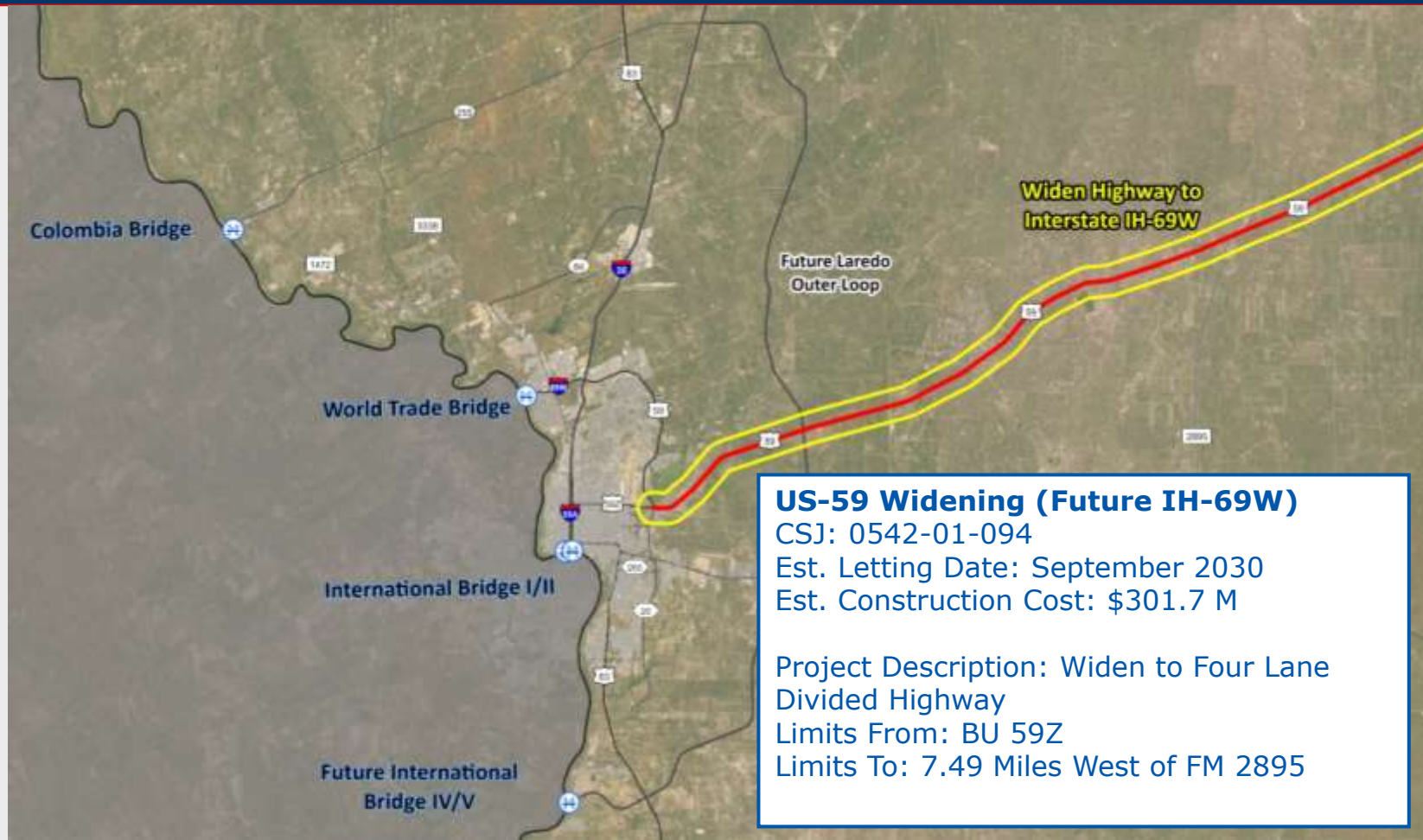
Partially Funded (\$81.43 M)

Project Description: Construction of Main  
lanes, Frontage Rd, and Interchanges

Limits From: BU 59Z

Limits To: Jacaman Rd.





### **US-59 Widening (Future IH-69W)**

CSJ: 0542-01-094

Est. Letting Date: September 2030

Est. Construction Cost: \$301.7 M

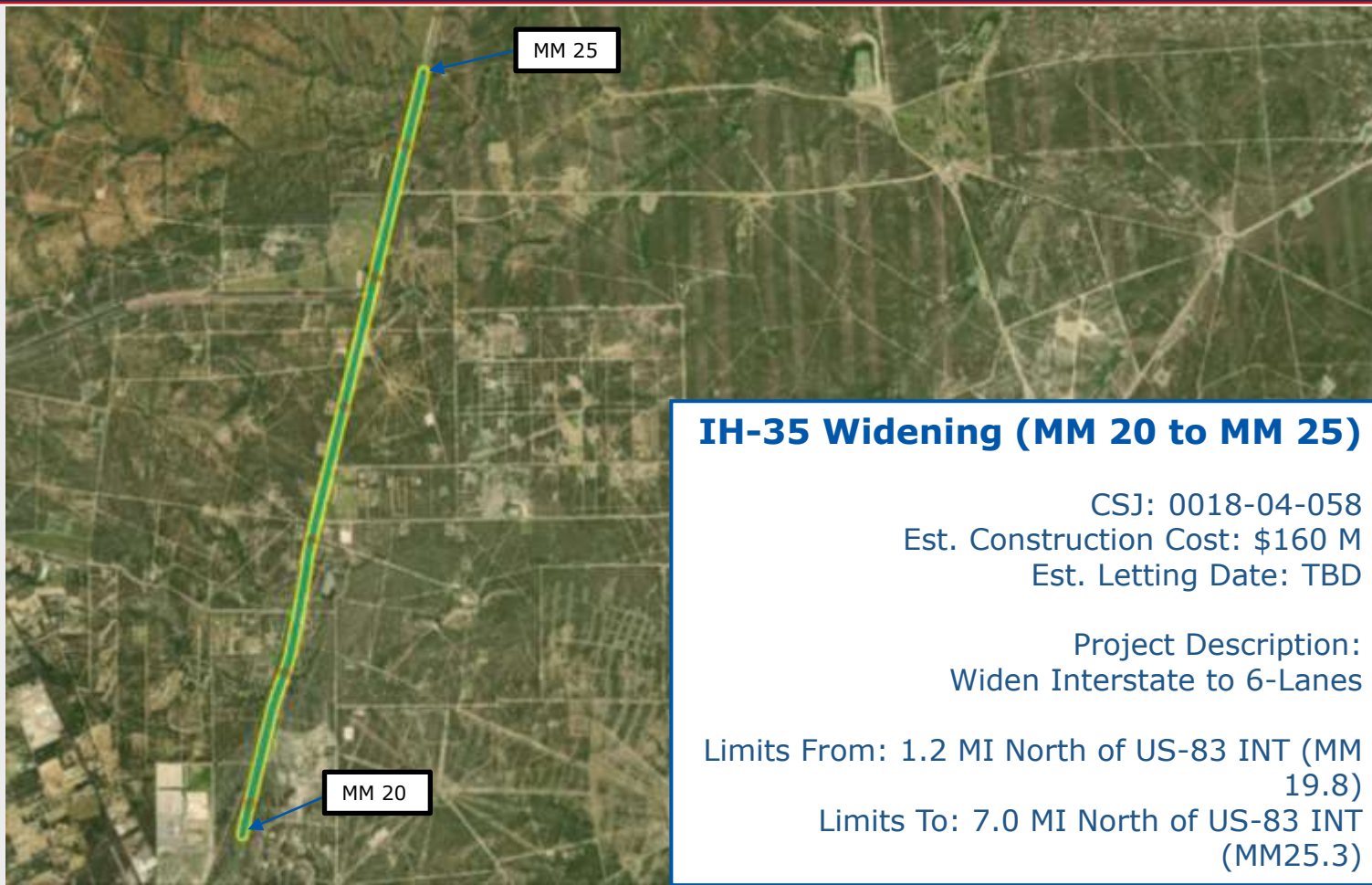
Project Description: Widen to Four Lane Divided Highway

Limits From: BU 59Z

Limits To: 7.49 Miles West of FM 2895



# PROJECTS UNDER DEVELOPMENT – NOT FUNDED



## **IH-35 Widening (MM 20 to MM 25)**

CSJ: 0018-04-058

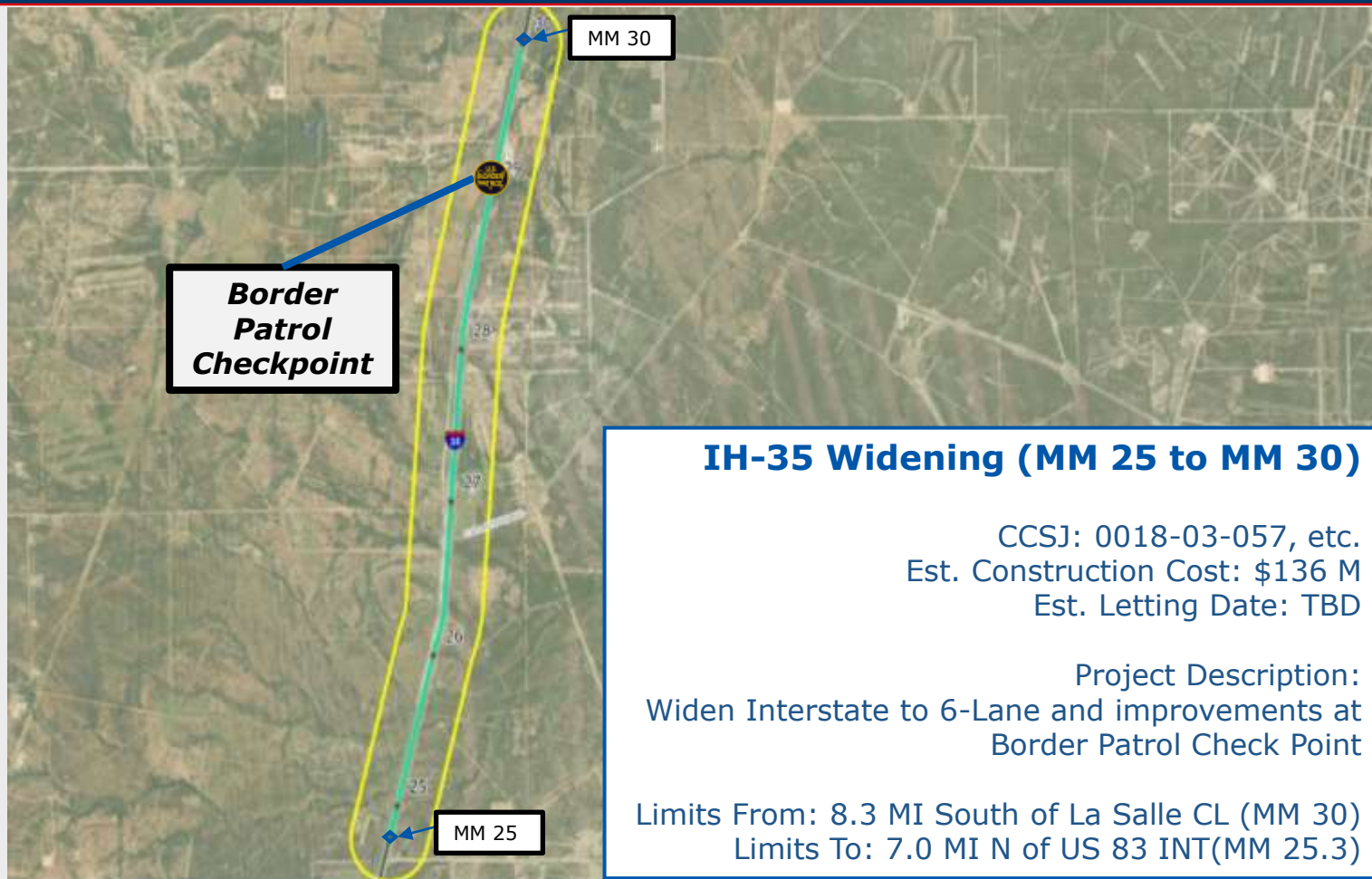
Est. Construction Cost: \$160 M

Est. Letting Date: TBD

Project Description:  
Widen Interstate to 6-Lanes

Limits From: 1.2 MI North of US-83 INT (MM  
19.8)

Limits To: 7.0 MI North of US-83 INT  
(MM25.3)



**Border  
Patrol  
Checkpoint**

## **IH-35 Widening (MM 25 to MM 30)**

CCSJ: 0018-03-057, etc.  
Est. Construction Cost: \$136 M  
Est. Letting Date: TBD

Project Description:  
Widen Interstate to 6-Lane and improvements at  
Border Patrol Check Point

Limits From: 8.3 MI South of La Salle CL (MM 30)  
Limits To: 7.0 MI N of US 83 INT(MM 25.3)





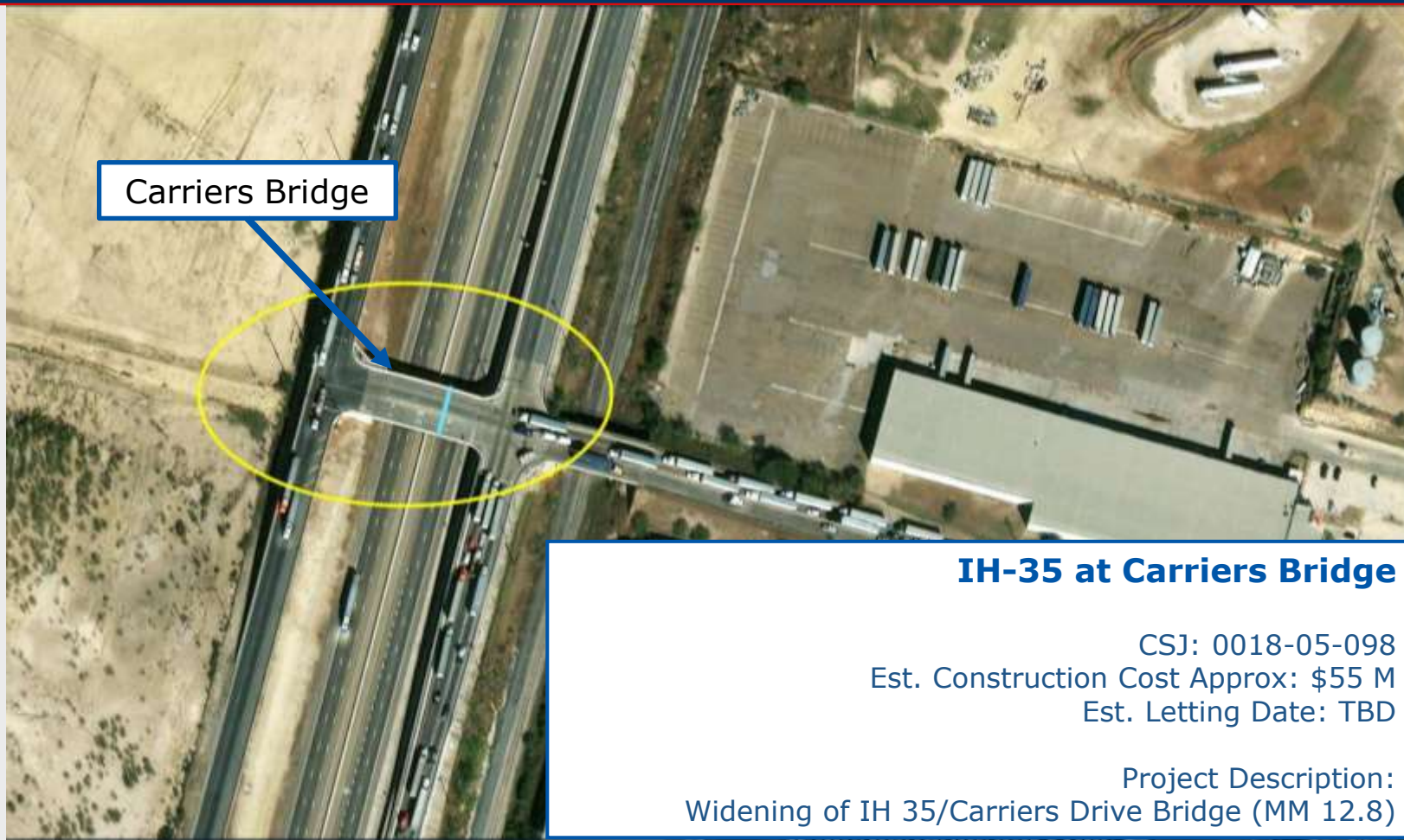
## Vallecillo Overpass

CSJ: 0018-06-218

Est. Construction Cost Approx: \$72.8 M

Est. Letting Date: September 2029

Project Description:  
Construction of new Interchange at Vallecillo Roadway.



Carriers Bridge

## **IH-35 at Carriers Bridge**

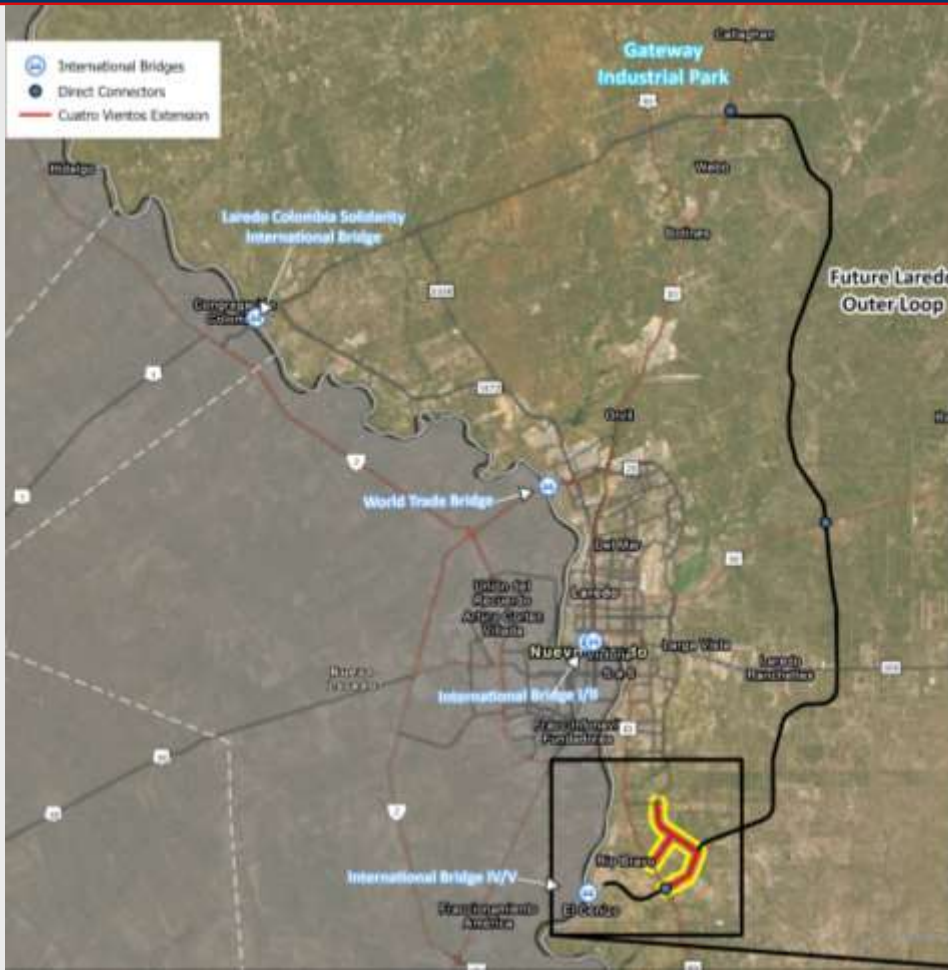
CSJ: 0018-05-098

Est. Construction Cost Approx: \$55 M

Est. Letting Date: TBD

Project Description:  
Widening of IH 35/Carriers Drive Bridge (MM 12.8)





## Cuatro Vientos Extension

CSJ: 0922-33-0066, etc.

Est. Construction Cost: \$306.8 M

Est. Letting Date: TBD

Project Description:

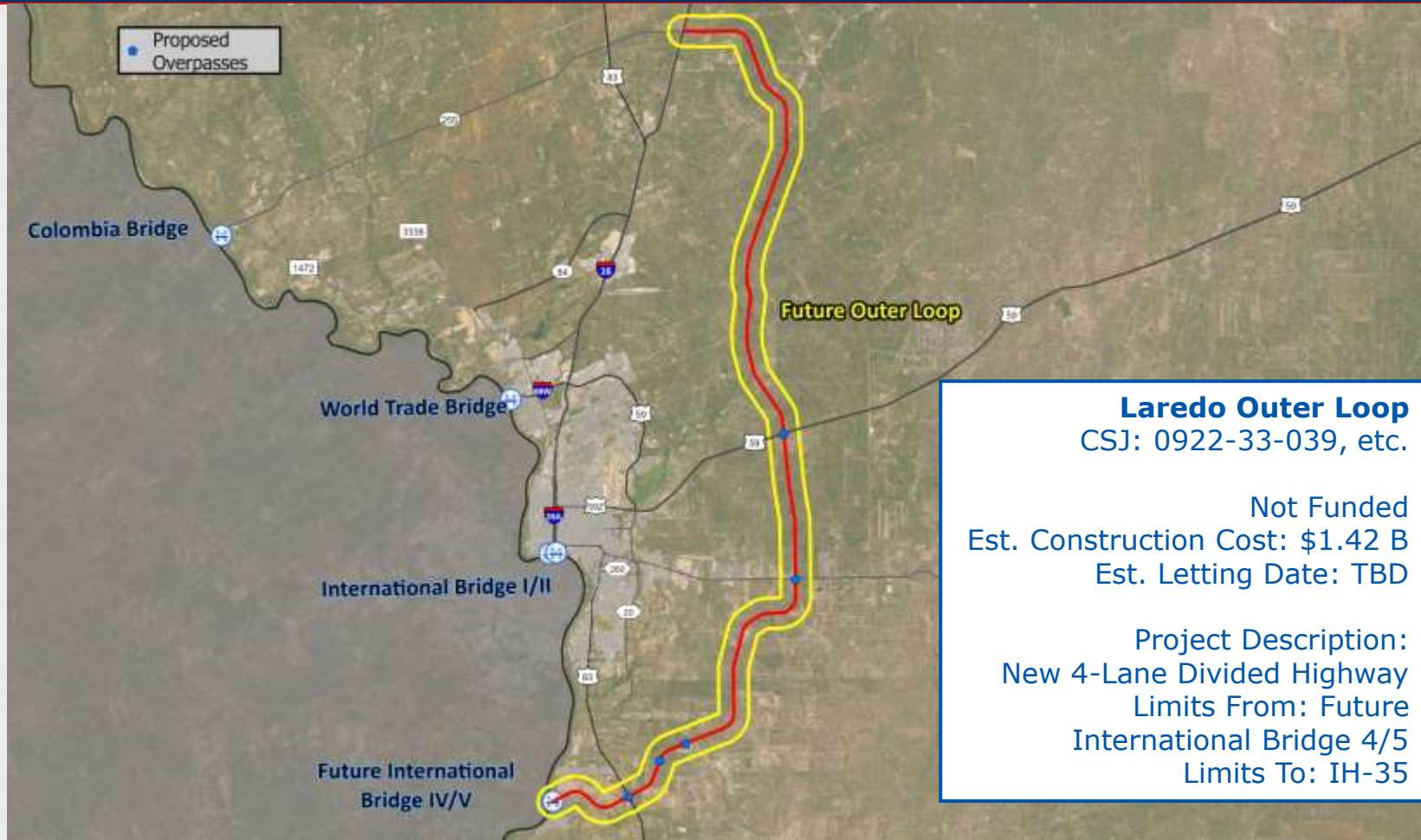
New 4-Lane Divided Highway

Limits From: Mangana-Hein Road

Limits To: US 83



# LONG RANGE PROJECTS



### **Laredo Outer Loop**

CSJ: 0922-33-039, etc.

Not Funded

Est. Construction Cost: \$1.42 B

Est. Letting Date: TBD

Project Description:

New 4-Lane Divided Highway

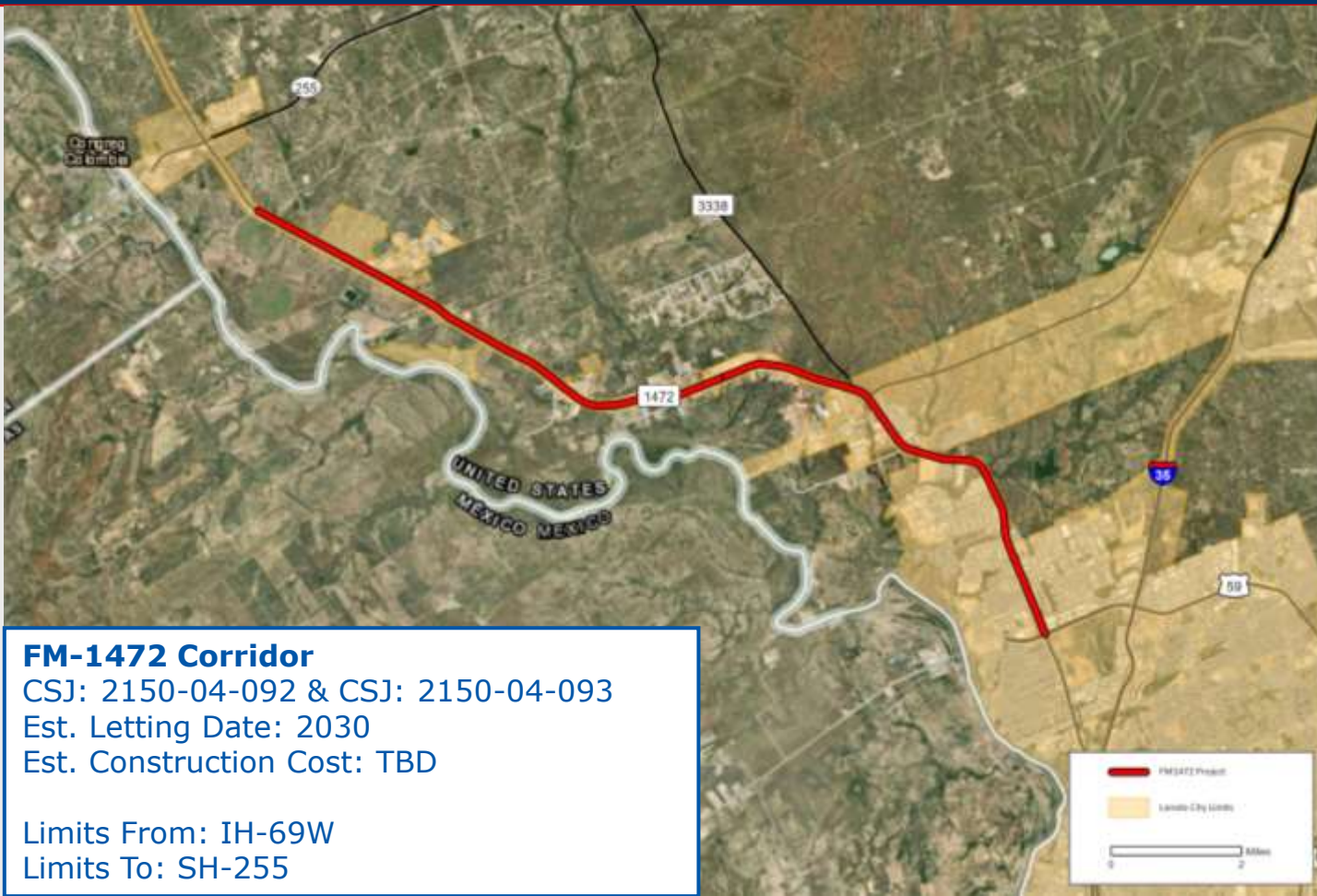
Limits From: Future

International Bridge 4/5

Limits To: IH-35







### **FM-1472 Corridor**

CSJ: 2150-04-092 & CSJ: 2150-04-093

Est. Letting Date: 2030

Est. Construction Cost: TBD

Limits From: IH-69W

Limits To: SH-255



## IH-35 Widening (MM 30 to MM 82/Frio County Line)

Est. Construction Cost: \$1.77 Billion  
Est. Letting Date: TBD

From: MM 30, To: MM 82 (Frio County Line).

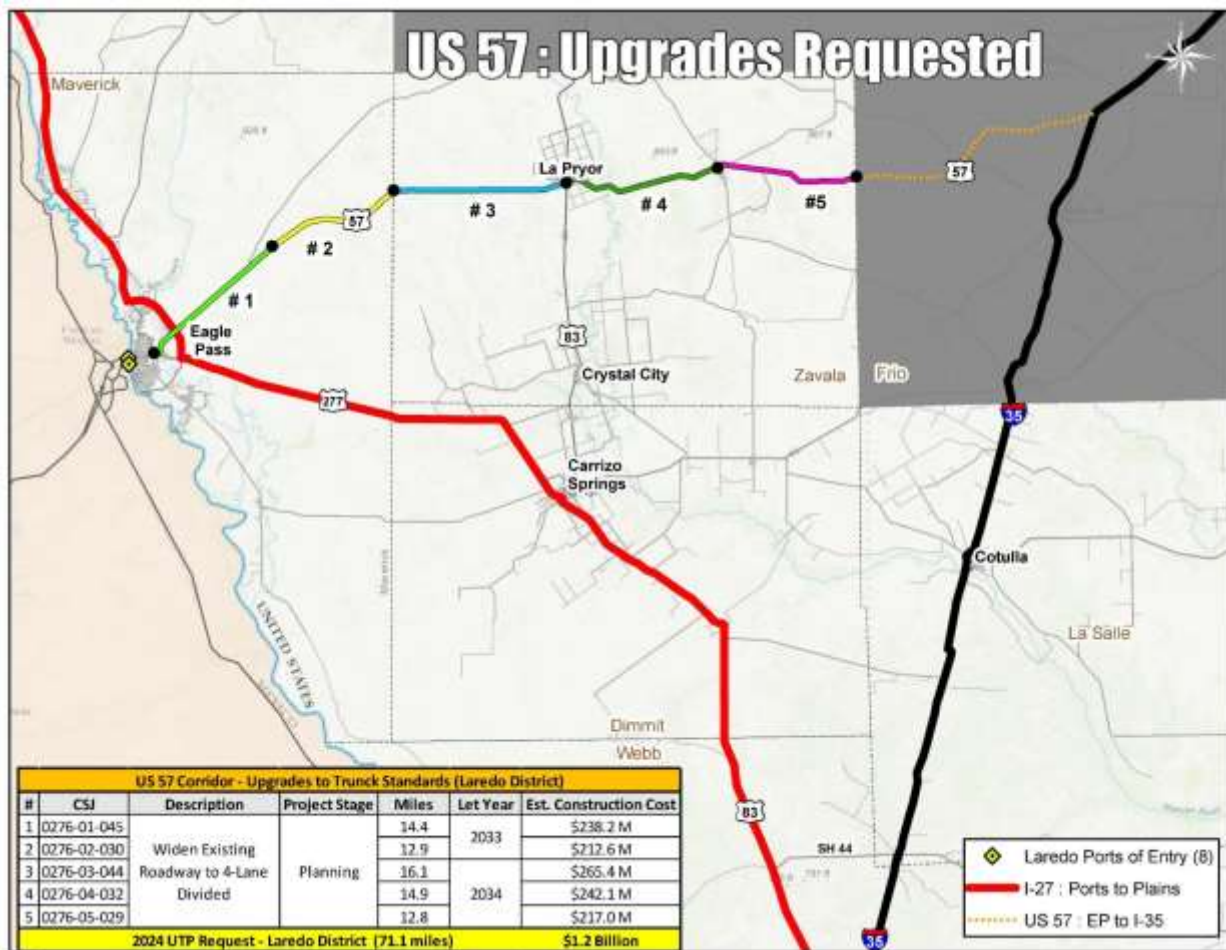
Project Description: Upgrade from 4 to 6 Lanes. Widen Interstate to 6-Lanes.

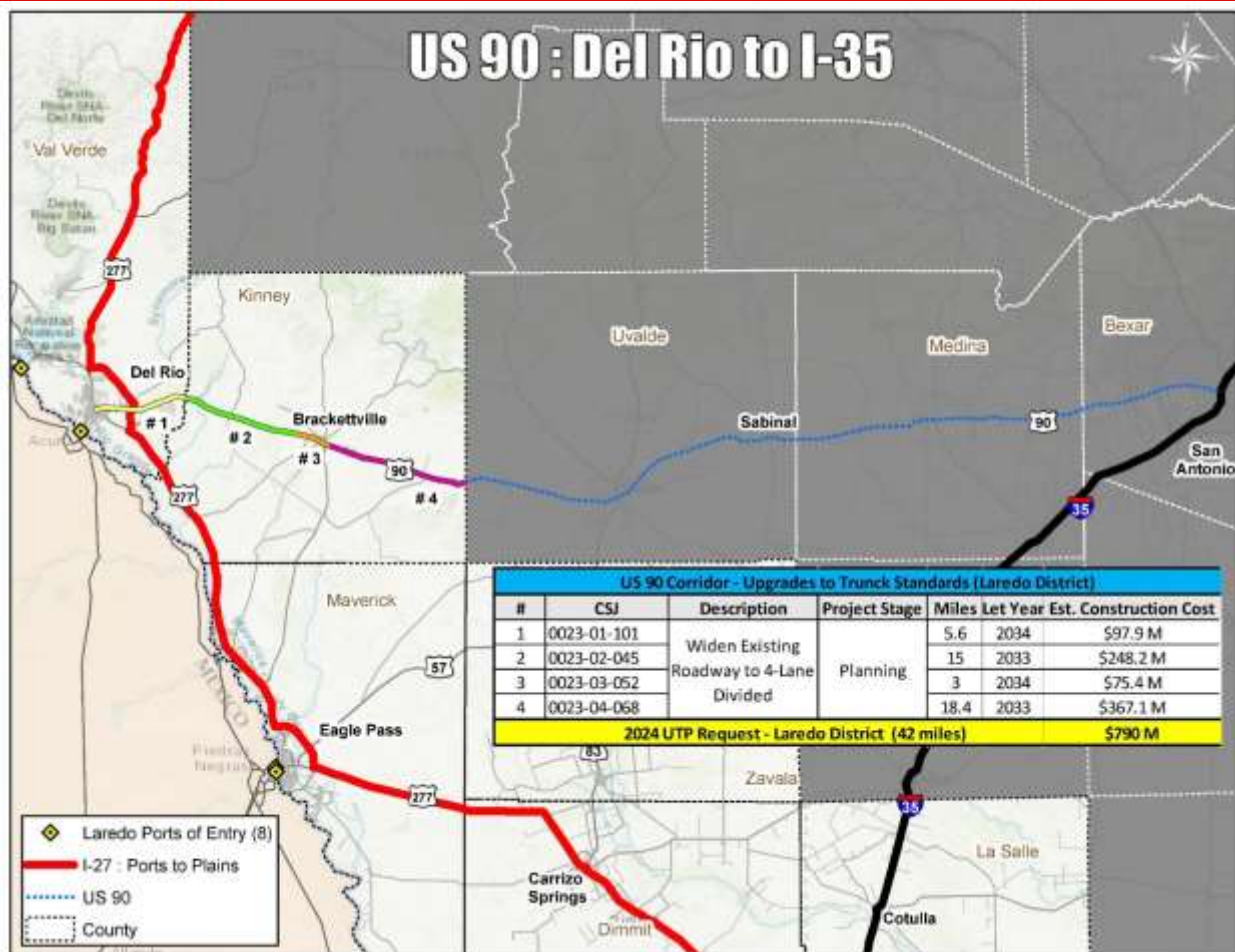
CSJ: 0017-08-107, 15.6 miles  
\$517 M

CSJ: 0018-01-099, 10.6 miles  
\$353 M

CSJ: 0018-02-088, 17.7 miles  
\$596 M

CSJ: 0018-03-060, 9.7 miles  
\$312 M





# *Questions?*

## **Epigmenio Gonzalez, P.E.**

TxDOT – Laredo District Engineer

1817 Bob Bullock Loop, Laredo TX 78043

E-mail: [Epigmenio.Gonzalez@txdot.gov](mailto:Epigmenio.Gonzalez@txdot.gov)