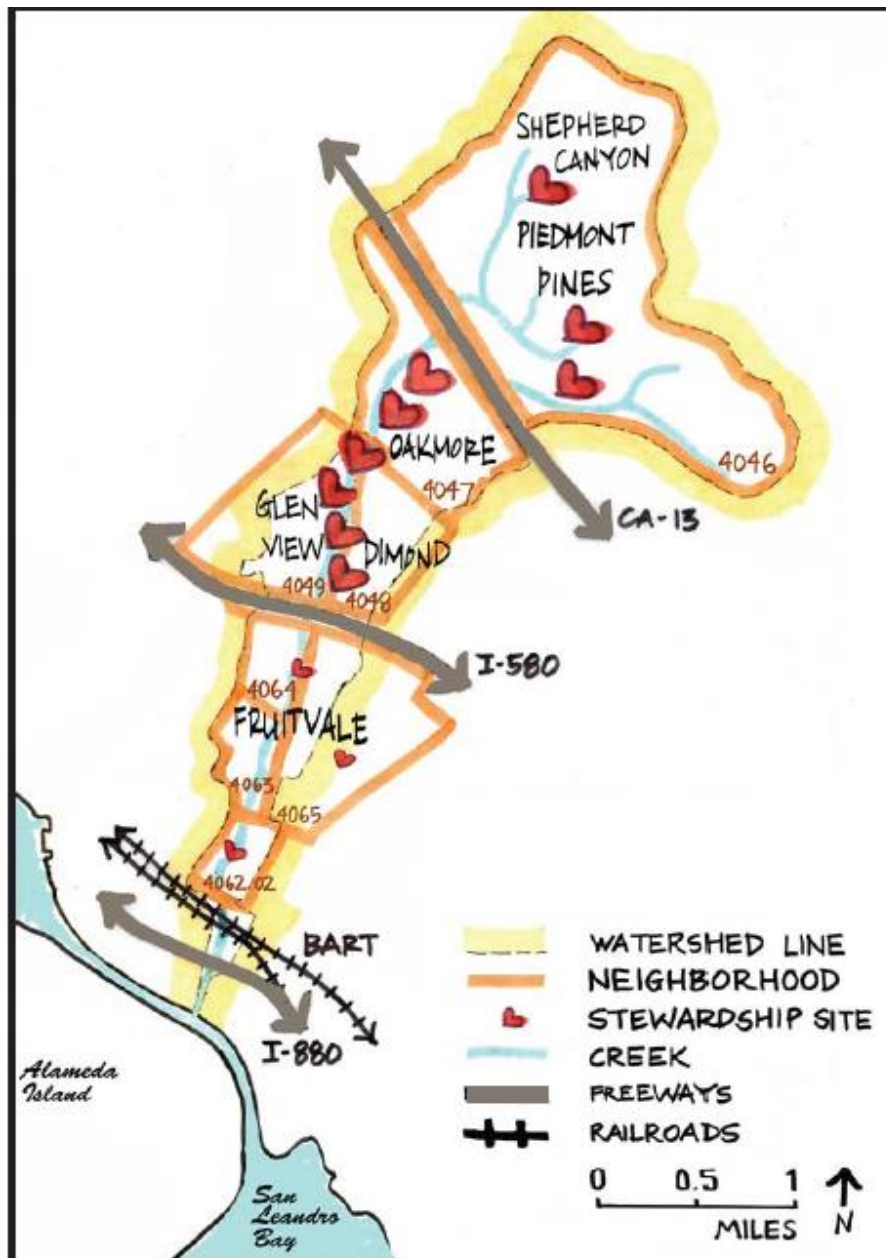


## Mapping Sausal Creek



Sites of Stewardship in the Sausal Creek Watershed, from  
Stewardship Stories for Watershed Justice by Jane Wardani

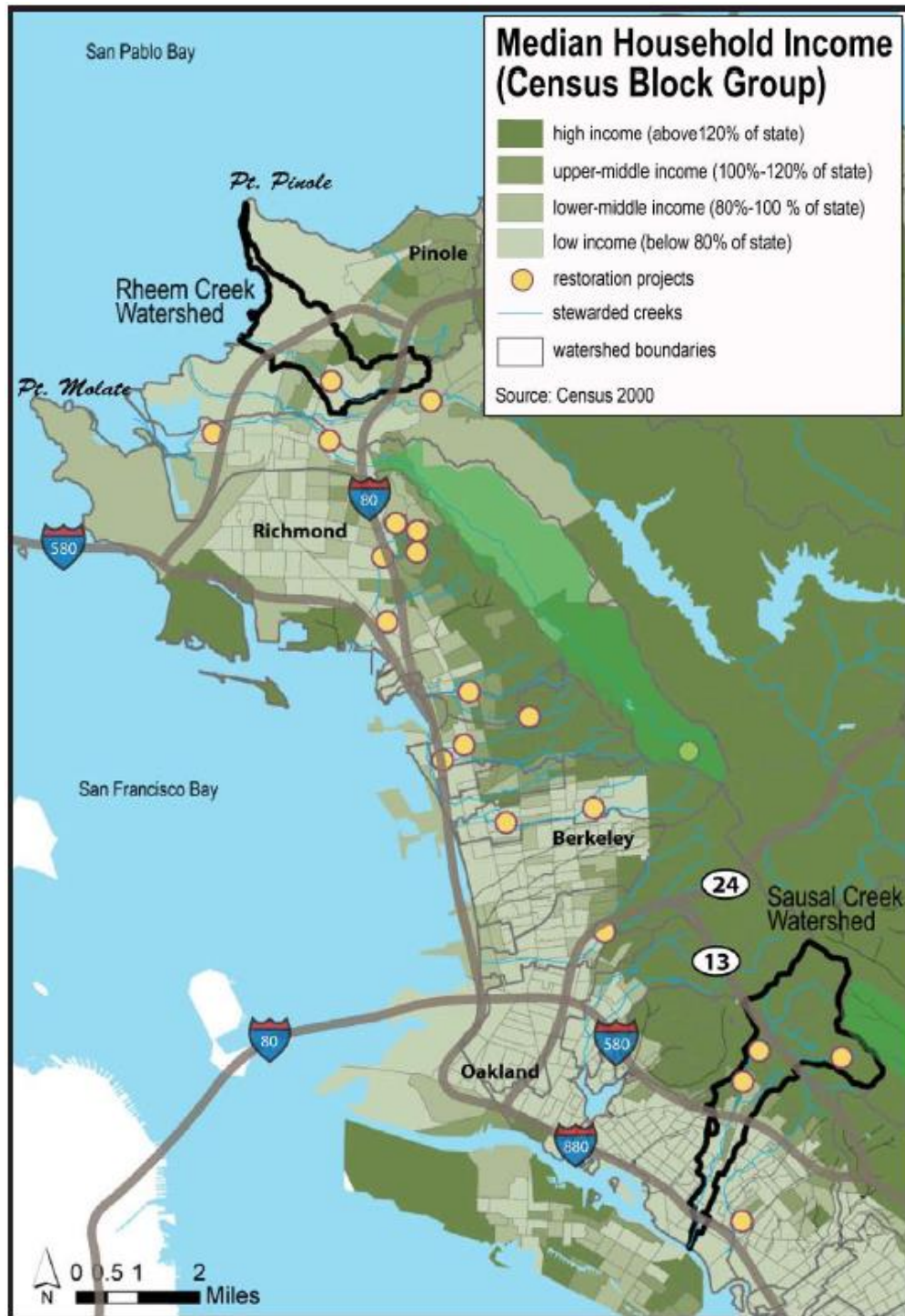
Maps can be a creative expression, documentation of history and culture, or used for science and management. There are many ways the Sausal Creek Watershed has been mapped, and many more ways it could be in the future!

This month's Explore the Watershed highlights just a few maps of Sausal Creek. We hope that looking at these maps together can show the many different ways that the watershed can be conceptualized, analyzed, and experienced.

If you know of more maps of the watershed you'd like to share, please post them on social media, and don't forget to tag us!

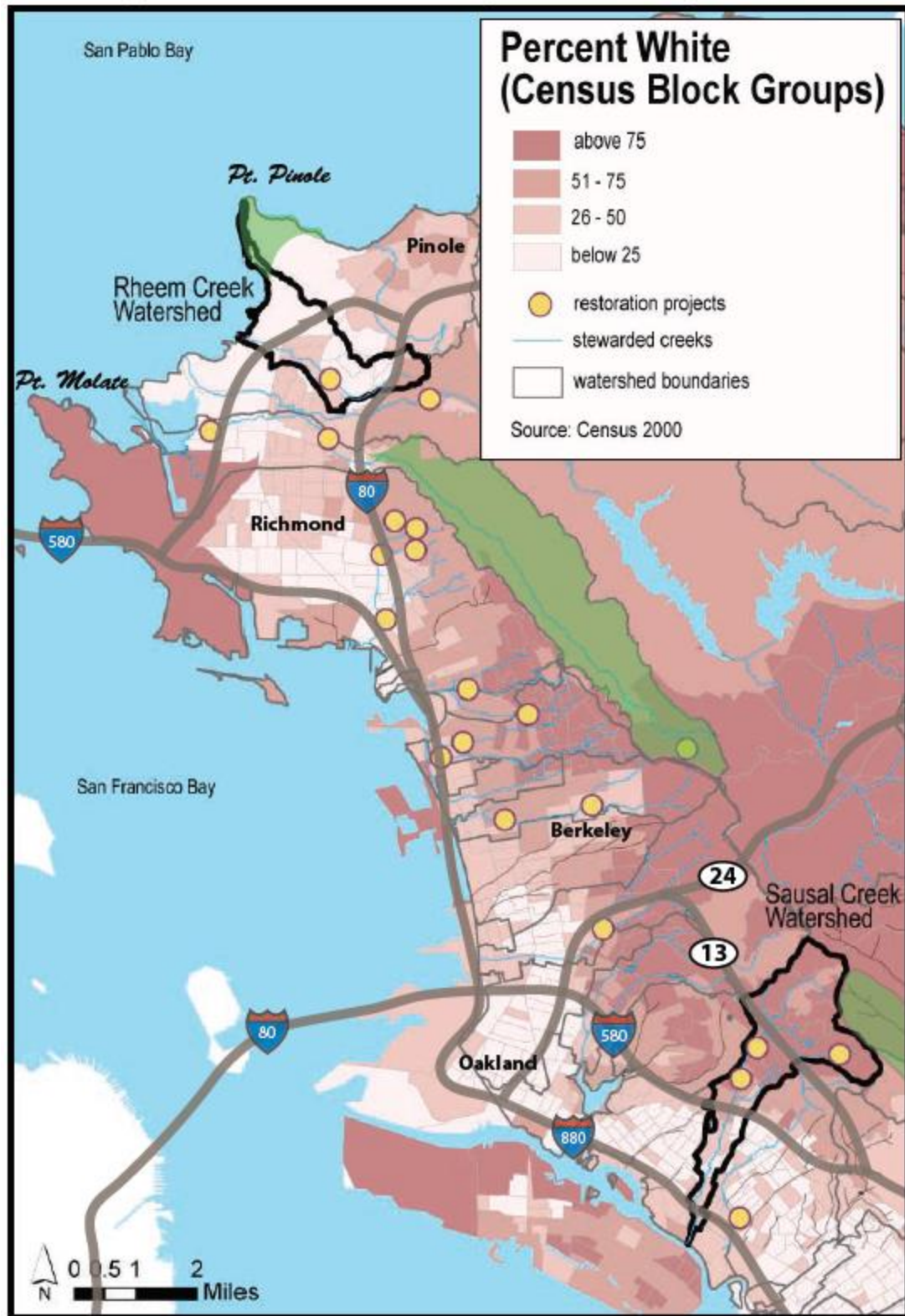


Map of Native Peoples of the East Bay, from the East Bay Regional Parks District.

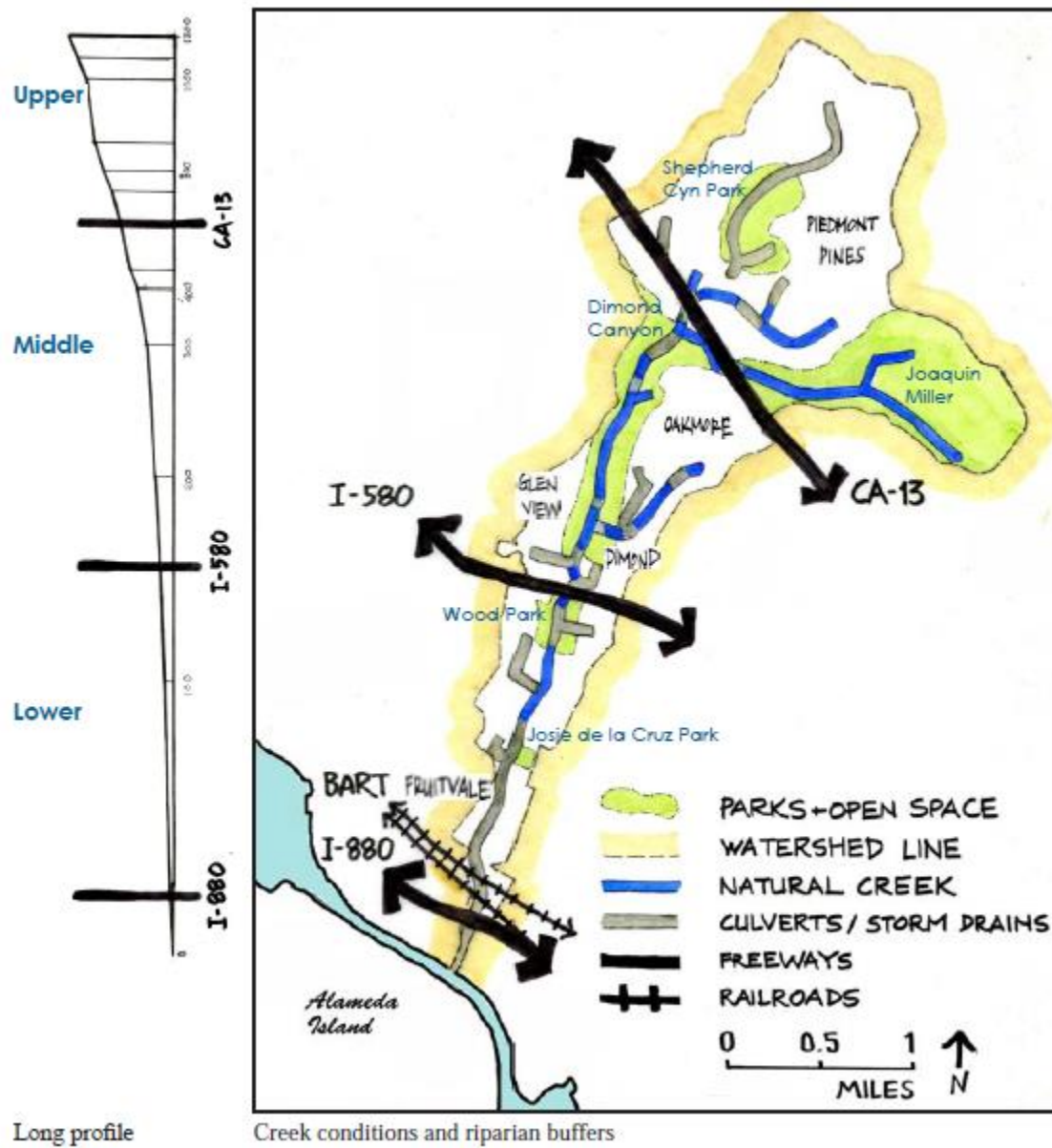


Creek restoration, stewardship, and income in East Bay watersheds from Stewardship Stories for Watershed Justice by Jane Wardani, adapted from Mozingo 2005.





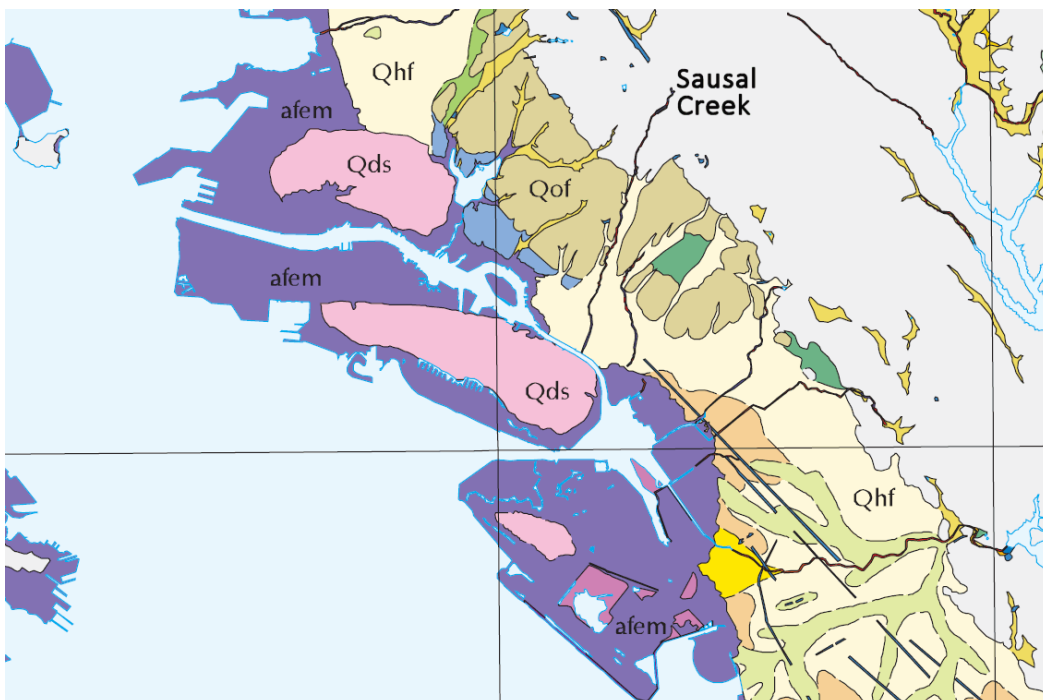
Creek restoration, stewardship, and race in East Bay watersheds from Stewardship Stories for Watershed Justice by Jane Wardani.



Physical conditions of the Sausal Creek Watershed from Stewardship Stories for Watershed Justice by Jane Wardani.



Oakland  
Creeks Circa  
1800, The  
Oakland  
Museum of  
California



Maps of  
Quaternary  
Deposits and  
Liquefaction  
California  
Geological  
Survey, Via  
[Oakland  
Geology  
Blog](#)

Friends of Sausal Creek  
June 2021 Newsletter

Explore the Watershed  
Jackie Van Der Hout

afem = Landfill (artificial fill over estuarine mud)

Qhf =Quaternary Holocene (young river sediment)

Qds = Ice Age sand dunes