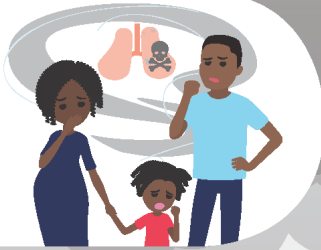


Carbon Monoxide Safety

Be aware of potential sources of carbon monoxide poisoning and be sure to keep equipment in your properties and your offices properly maintained.



Carbon Monoxide (CO) The Invisible Killer



CO is an invisible and odorless gas emitted by fuel-burning products, including generators, gas appliances, water heaters, furnaces, charcoal grills, and engine-driven tools.



Generators produce hundreds of times more CO than cars.



More than 80 consumers die each year from CO poisoning caused by portable generators.

African Americans are at Higher Risk for Generator-related CO Death



Percent of Population



Percent of CO Deaths

CO Alarms Save Lives



Install battery-operated CO alarms or CO alarms with battery backup in your home.

Don't be a Victim of CO Poisoning! Follow These Safety Tips:



- **Never operate a portable generator inside** a home, garage, basement, crawlspace, shed or on a porch; and never leave a car running in an attached garage.
- **Operate portable generators outside only, at least 20 feet away from the house, and direct the generator's exhaust away from the home and other buildings.**
- **Ask retailers for a portable generator with a safety feature to shut off automatically** when high CO concentrations are present. Some models with CO shut-off also have reduced emissions.
- **Never burn charcoal inside** a home, garage, vehicle, or tent.



REPORT INCIDENTS to CPSC at:
SaferProducts.gov
(800) 638-2772
or (301) 595-7054
for people with hearing, speech, or language challenges



United States
Consumer Product Safety Commission

CPSC.gov
f t i y
USCPC

NSN-04-022022



CARBON MONOXIDE

CAN BE **DEADLY**



WHAT IS **CARBON MONOXIDE (CO)**?

**CO IS AN
ODORLESS, TASTELESS, INVISIBLE KILLER**
PRODUCED BY THE INCOMPLETE BURNING OF
FUELS IN:



AIRPLANES



BOATS



HOMES



RVs

LONG TERM **HEALTH EFFECTS**

CO can cause

long-term health problems
for your:



HEART



BRAIN



LUNGS

ANNUALLY CARBON MONOXIDE CAUSES...

22K

EMERGENCY
ROOM
VISITS



440

DEATHS



Is the
**2nd leading
cause of
non
mechanical
poisoning**

HOW MUCH CO IS **TOO MUCH?**

**10-35
PPM**

PREGNANT WOMEN,
CHILDREN,



ELDERLY, and those with
heart and respiratory ailments.

**400
PPM**

**LIFE
THREATENING
IN 3 HRS**

*PPM = parts per million molecules of air

**800
PPM**

**DEATH
IN 2 HRS**



**1600
PPM**

**DEATH
IN 1 Hr**

PROTECT **YOURSELF**

GET a CO detector with
AN ALARM!



KNOW THE SIGNS

How CO effects you will depend upon the
CONCENTRATION LEVELS, LENGTH OF EXPOSURE,
and your **OVERALL HEALTH CONDITION.**



HEADACHE



BLURRED VISION



NAUSEA

WHAT TO DO IN AN **EMERGENCY?**



OPEN
Vents

DESCEND
if CO < 35ppm



LAND
if CO > 35ppm



TURN OFF
Heat



SEEK
medical help

AEROMEDIX

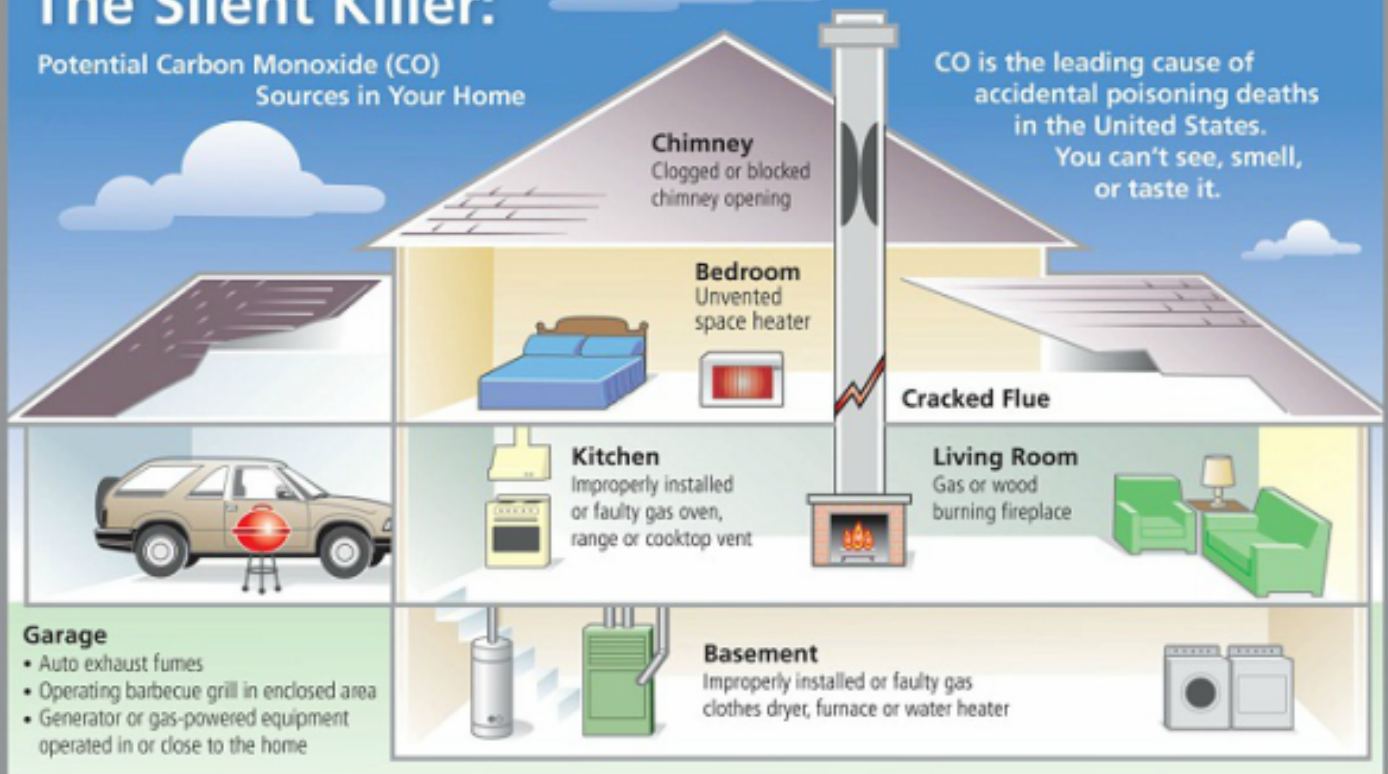
Providing general aviation safety solutions since 1994.

AeroMedix.com
1.888.362.7123
call or order Online.

The Silent Killer:

Potential Carbon Monoxide (CO)
Sources in Your Home

CO is the leading cause of
accidental poisoning deaths
in the United States.
You can't see, smell,
or taste it.



For more information about
carbon monoxide visit:

KnowAboutCO.com



Carbon Monoxide



Colorless



Odorless



Tasteless

Carbon Monoxide (CO) is a colorless, odorless, and tasteless gas, which is the number one cause of accidental poisoning deaths in the United States. CO gas is nearly impossible to identify without a CO detector. Even though CO detectors have become common in homes, CO poisoning still causes about 15,000 emergency room visits and 500 deaths each year.

Signs of CO Poisoning:

CO is dangerous because as it is breathed in it replaces the oxygen in the bloodstream with poison. At high concentrations, CO can starve vital organs such as the heart and brain of oxygen.

According to the Consumer Product Safety Commission (CSPC), people begin to notice symptoms like headache, fatigue, and nausea when CO levels reach 70 parts per million (ppm). Sustained exposure to CO levels between 150 to 200 ppm can cause serious symptoms and even death.

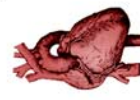
CO poisoning can also cause neurological changes that are not physically manifested until weeks or months after the initial poisoning. These include short-term memory loss, speech problems, and depression.



Neurological Changes



Replaces Oxygen



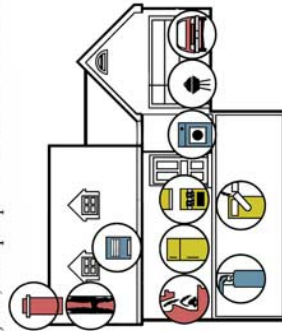
Starves Vital Organs

CO Producers:

CO gas can be created whenever coal, gasoline, kerosene, oil, propane, or wood is burned.

Gas powered furnaces, generators, tools, and water heaters create CO.

Additionally, automobiles, charcoal grills, and propane heaters create CO.



Poisoning

Product Recalls and Lawsuits:

In the past several years, the CSPC has issued recalls for a number of CO producing machines including:

Electrolux ICON gas range

Kenmore PRO 30" gas range

Williamson-Thermoflo GWS gas boiler

Weil-McLain CGs gas boiler

45,000 Brinkman Outdoor Tabletop Heaters

Coleman has faced a number of lawsuits regarding its outdoor propane heaters and CO poisoning deaths.

50%

Only 50% of homes in the United States have Working Carbon Monoxide Alarm Detectors.

75%

75% of homes have a current or potential Carbon Monoxide Producer.

72,000

72,000 CO incidences occur every year in the United States.

**Call d'Oliveira & Associates
at 1-800-992-6878 for a free Consultation**

COMMON CO EMISSION SOURCES



Car running in garage



Gas or wood fire in blocked chimney



Cracked or corroded exhaust vent pipes



Poorly installed gas appliances



Cracked or leaking boiler or furnace heat section



Grilling indoors or in garage



Kerosene or gas heaters

- **GET A CARBON MONOXIDE ALARM. THIS LIFE-SAVING DEVICE WILL SOUND WHEN IT DETECTS CO.**
- **NEVER BLOCK VENTILATION DUCTS. SWEEP CHIMNEYS AT LEAST ONCE A YEAR.**
- **HAVE YOUR FUEL BURNING APPLIANCES SERVICED OR INSPECTED ANNUALLY.**