



**South Blackfoot  
Interchange**  
Exit 89

**Exit 89 to  
Exit 93  
Widening**

**US-26/Blackfoot  
Interchange**  
Exit 93

# Welcome

The Idaho Transportation Department (ITD) is developing plans for three projects on Interstate 15 between Fort Hall and Blackfoot.



## This meeting will give you the opportunity to:

- Learn about ITD's plans for each of these projects.
- Share input for the project teams to consider as the design process continues.
- Learn about the next steps in the projects and how to stay informed.



**Your Safety • Your Mobility  
Your Economic Opportunity**





## US-26/Blackfoot Interchange (Exit 93)

This project will replace the I-15 US-26/Blackfoot Interchange at Exit 93 with a new interchange.

## Exit 89 to Exit 93 Widening

This project will widen I-15 to three lanes in each direction between exits 89 and 93.

## South Blackfoot Interchange (Exit 89)

This project will replace the I-15 South Blackfoot Interchange at Exit 89 with a new interchange design.

# Project Area



March 2025





# Community Input/Local Coordination

Community input is vital to the success of each I-15 project.



ITD is actively working with:

- Local jurisdictions
- Businesses
- Community organizations
- And more

ITD will keep the community informed about future input opportunities as these projects progress toward construction.





# Evaluation Criteria

## ITD uses the following criteria to evaluate design options:

- Improve safety and operations on I-15.
- Address future growth.
- Minimize the acquisition of right-of-way.
- Minimize traffic impacts during construction and routine maintenance.
- Improve I-15 in a cost-effective way.



*I-15 South Blackfoot  
Interchange (Exit 89)*





# Anticipated Construction Phasing

Maintaining traffic on US-26 and US-91 during construction is a priority as ITD develops project plans. Temporary lane restrictions and road closures may be necessary during construction, however it is too early to know precisely how traffic will be impacted on the South Blackfoot Interchange and Exit 89 to Exit 93 Widening projects.



*US-26 crossing under I-15 in Blackfoot*



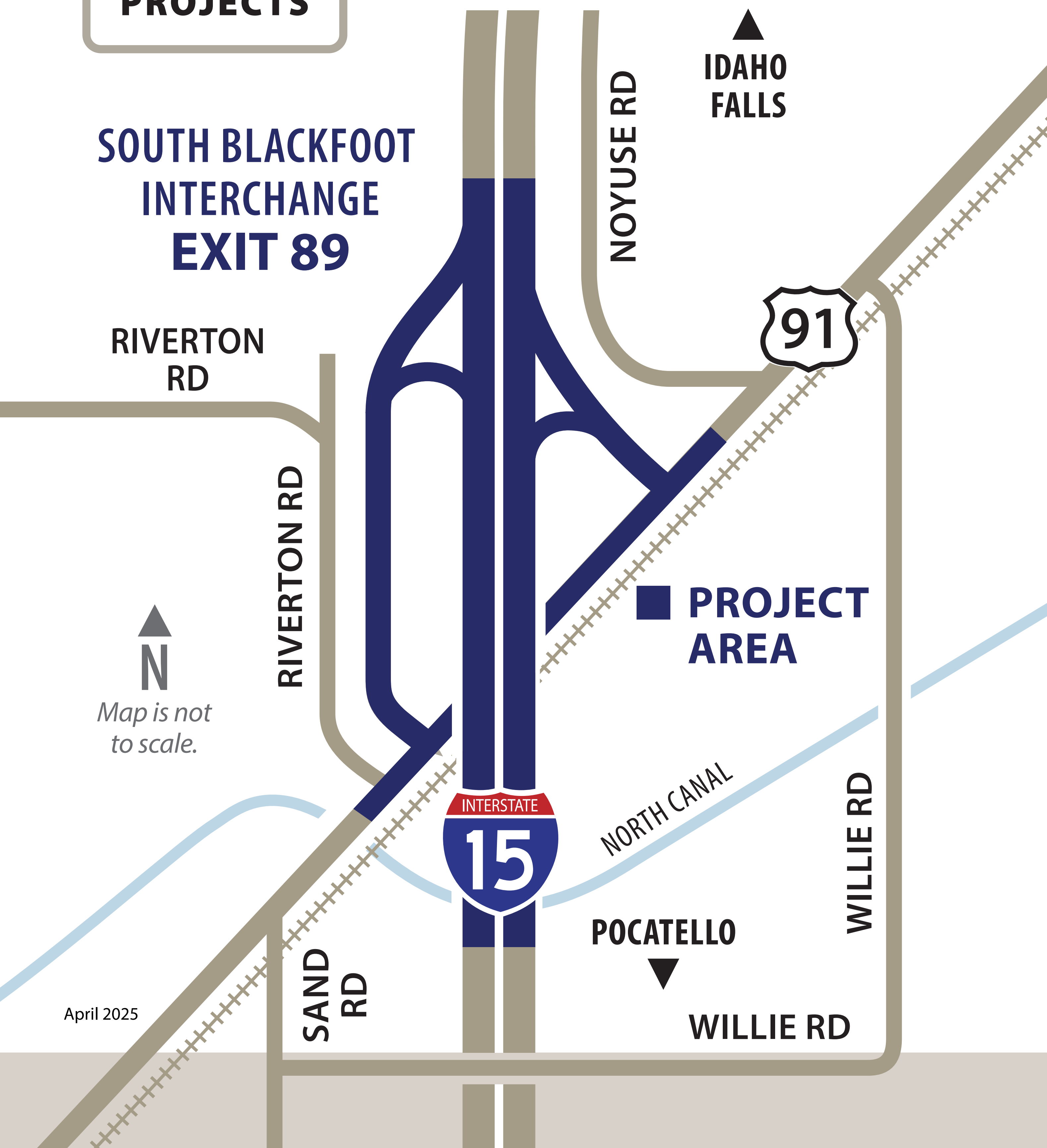
*US-91 crossing under I-15 in Blackfoot*





# South Blackfoot Interchange Exit 89

## Project Overview



ITD is developing plans to replace the I-15 South Blackfoot Interchange at Exit 89. This interchange is located where I-15 crosses over US Highway 91 and the UPRR tracks near Blackfoot.

The purpose of this project is to:

- Improve safety and mobility.
- Increase capacity.
- Improve interchange operations.





## South Blackfoot Interchange Exit 89

# Process & Anticipated Schedule

**Early 2025**

Began environmental evaluation and preliminary design work.

**Spring 2025**

**Host community open houses to present preliminary design options and request input.**

**WE ARE  
HERE**

**2025–2026**

Develop design plans.

**2026**

Host community open house(s) to present design plans and request input.

**2026–2027**

Complete design plans.

**2030**

Construction is scheduled to begin.\*

*\*ITD is evaluating alternative sources of funding that may allow construction to begin sooner than expected.*





## South Blackfoot Interchange Exit 89

# Design Options

### Design Option 1 — Improve Existing



### Design Option 2 — Pushed Diamond



### Design Option 3 — Overpass with east US-91 intersection



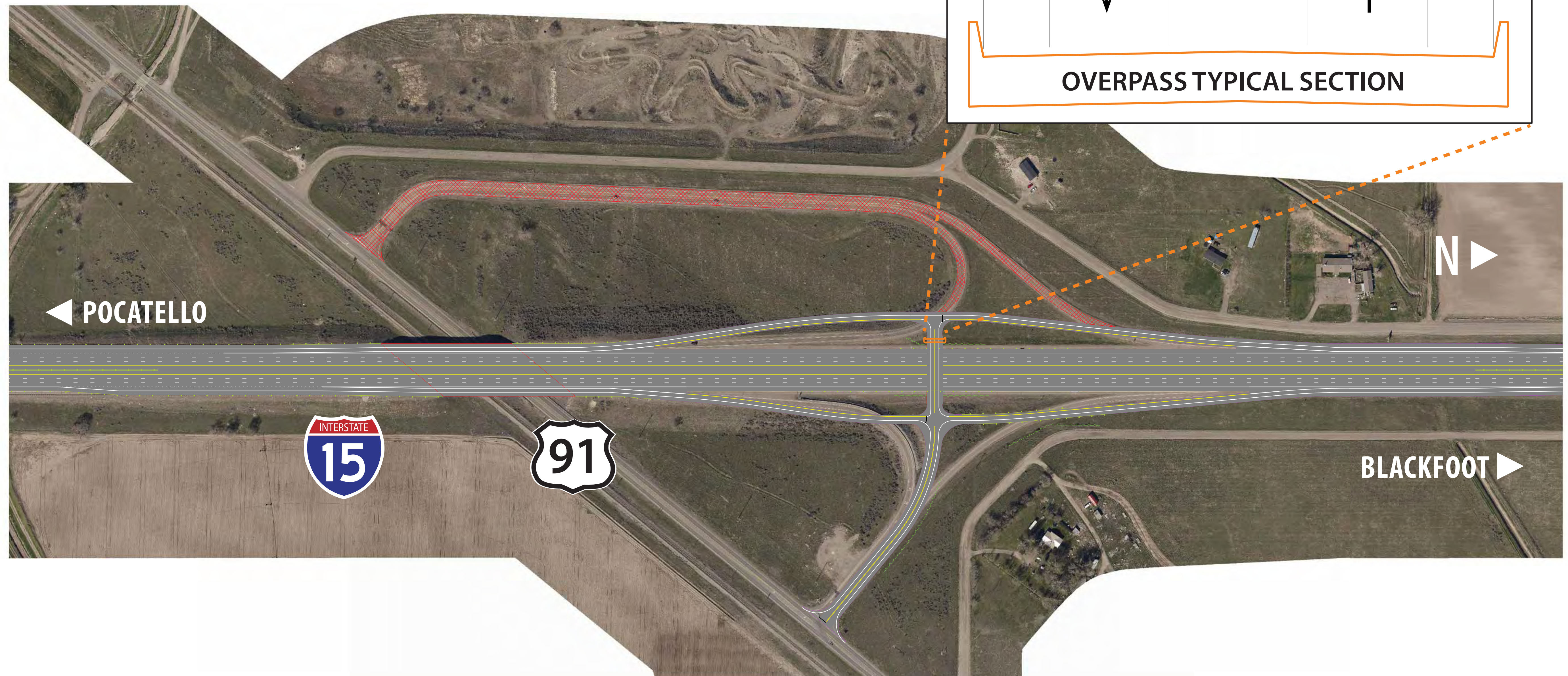
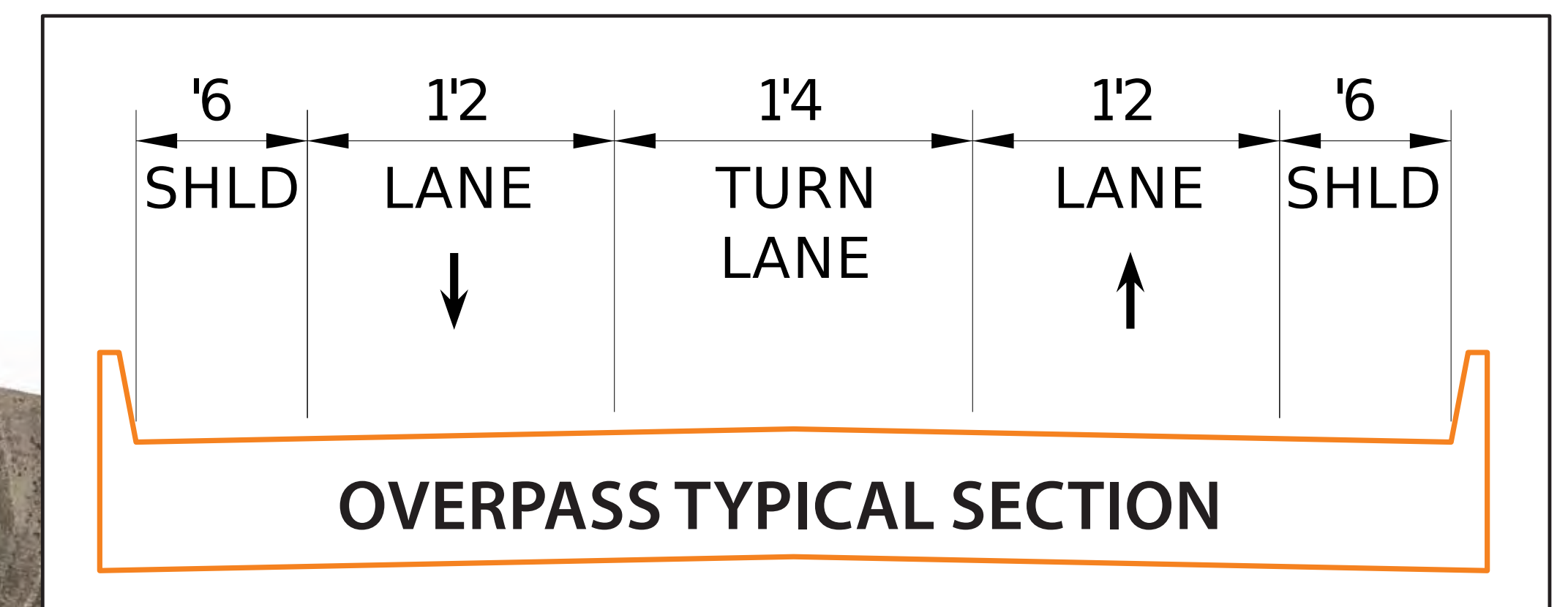




# South Blackfoot Interchange Exit 89

## Recommended Design–Option 3

### Overpass with east US-91 intersection







# US-26/ Blackfoot Interchange Exit 93

## Project Overview



ITD is developing plans to replace the I-15 US-26/Blackfoot Interchange at Exit 93. This interchange is located where I-15 crosses over US Highway 26 in Blackfoot.

This project will replace the current interchange with a design that will:

- Enhance safety.
- Improve interchange operations.
- Modernize aging infrastructure.
- Increase interstate capacity.





## US-26/ Blackfoot Interchange Exit 93

# Process & Anticipated Schedule

**2022–2023**

Began environmental evaluation and design work.

**2023**

Hosted a community open house to present preliminary design options and request input.

**2023–2025**

Developed design plans.

**Spring 2025**

**Host community open houses to present design plans and request input.**

**WE ARE  
HERE**

**2025–2026**

Complete design plans.

**2031**

Construction is scheduled to begin.\*

*\*ITD is evaluating alternative sources of funding that may allow construction to begin sooner than expected.*





## US-26/ Blackfoot Interchange Exit 93

ITD held a public open house in 2023 to share preliminary design options for the I-15 US-26/ Blackfoot Interchange at Exit 93.

Most participants preferred the Improved Diamond Interchange design.

# 2023 Public Open House Outcomes







## US-26/ Blackfoot Interchange Exit 93

# Planned Improvements

ITD is moving forward with an Improved Diamond Interchange design at the I-15 US-26/Blackfoot Interchange (Exit 93).



This design was chosen because it is a cost-effective way to improve safety, mobility and traffic operations, while accommodating future growth.

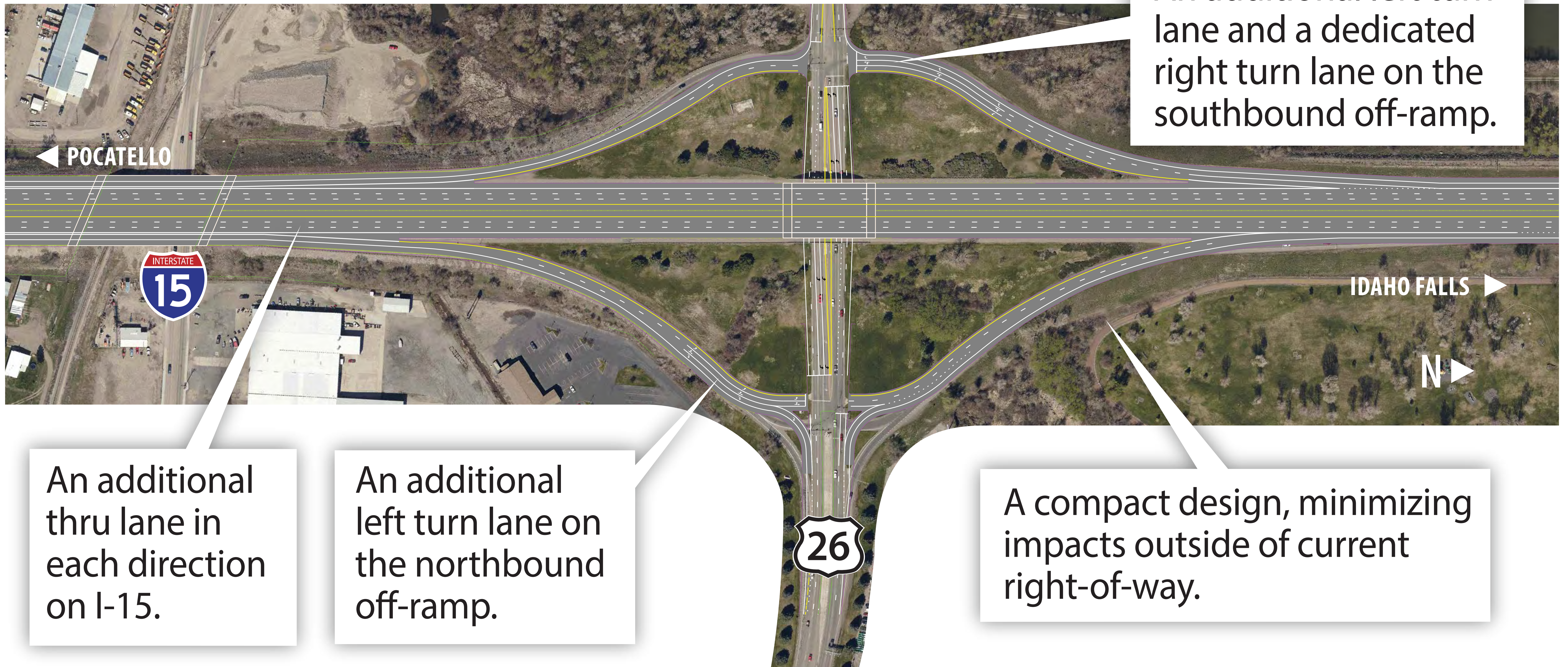
*I-15 US-26/Blackfoot  
Interchange (Exit 93)*





# US-26/ Blackfoot Interchange Exit 93

## Planned Improvements



An additional left turn lane and a dedicated right turn lane on the southbound off-ramp.

An additional thru lane in each direction on I-15.

An additional left turn lane on the northbound off-ramp.

A compact design, minimizing impacts outside of current right-of-way.



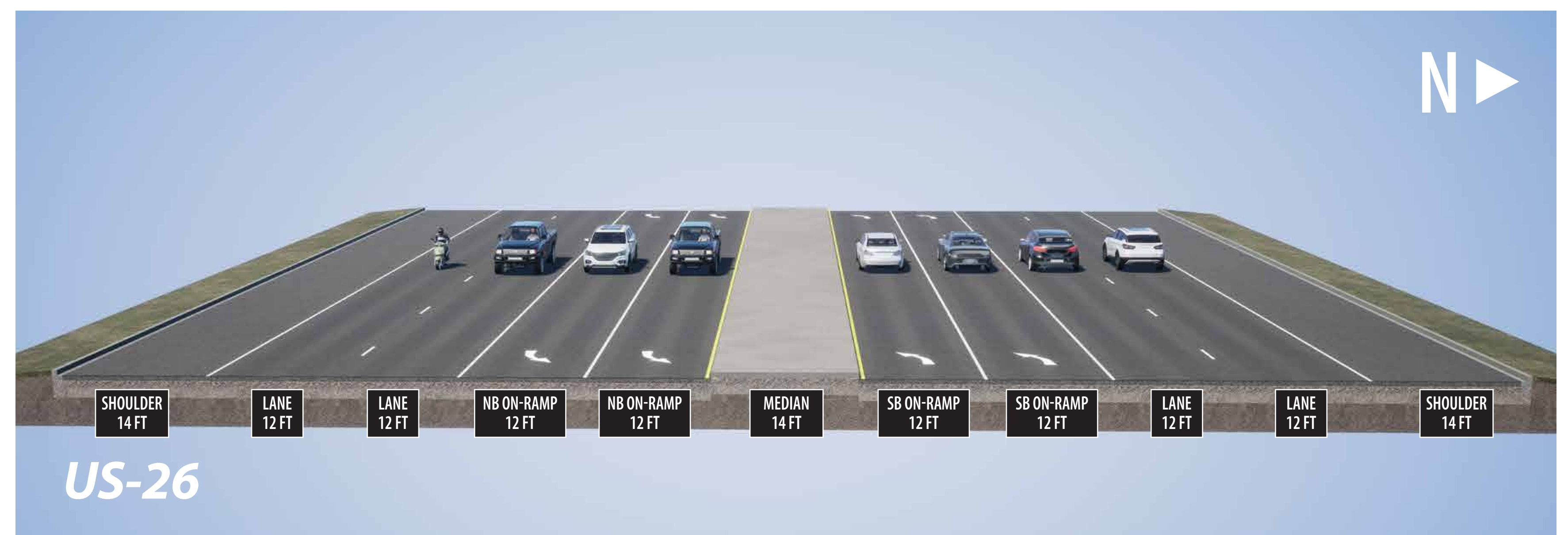
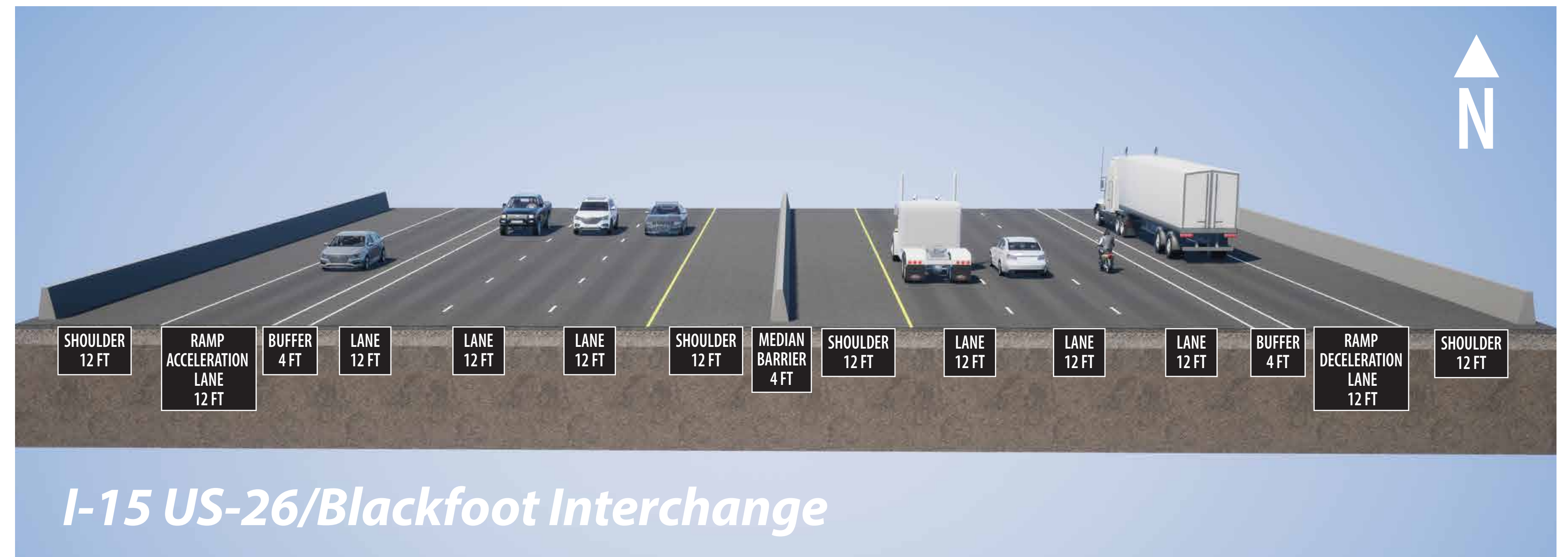


## US-26/ Blackfoot Interchange Exit 93

The interchange ramps will be lengthened and a 4-foot buffer will be built between I-15 traffic to allow motorists more space to safely enter and exit the interstate.

US-26 will have two through lanes and two left turn lanes under I-15. The new design features 23-foot clearance over US-26 to accommodate oversized trucks and megaloads.

# Ramp and US-26 Improvements





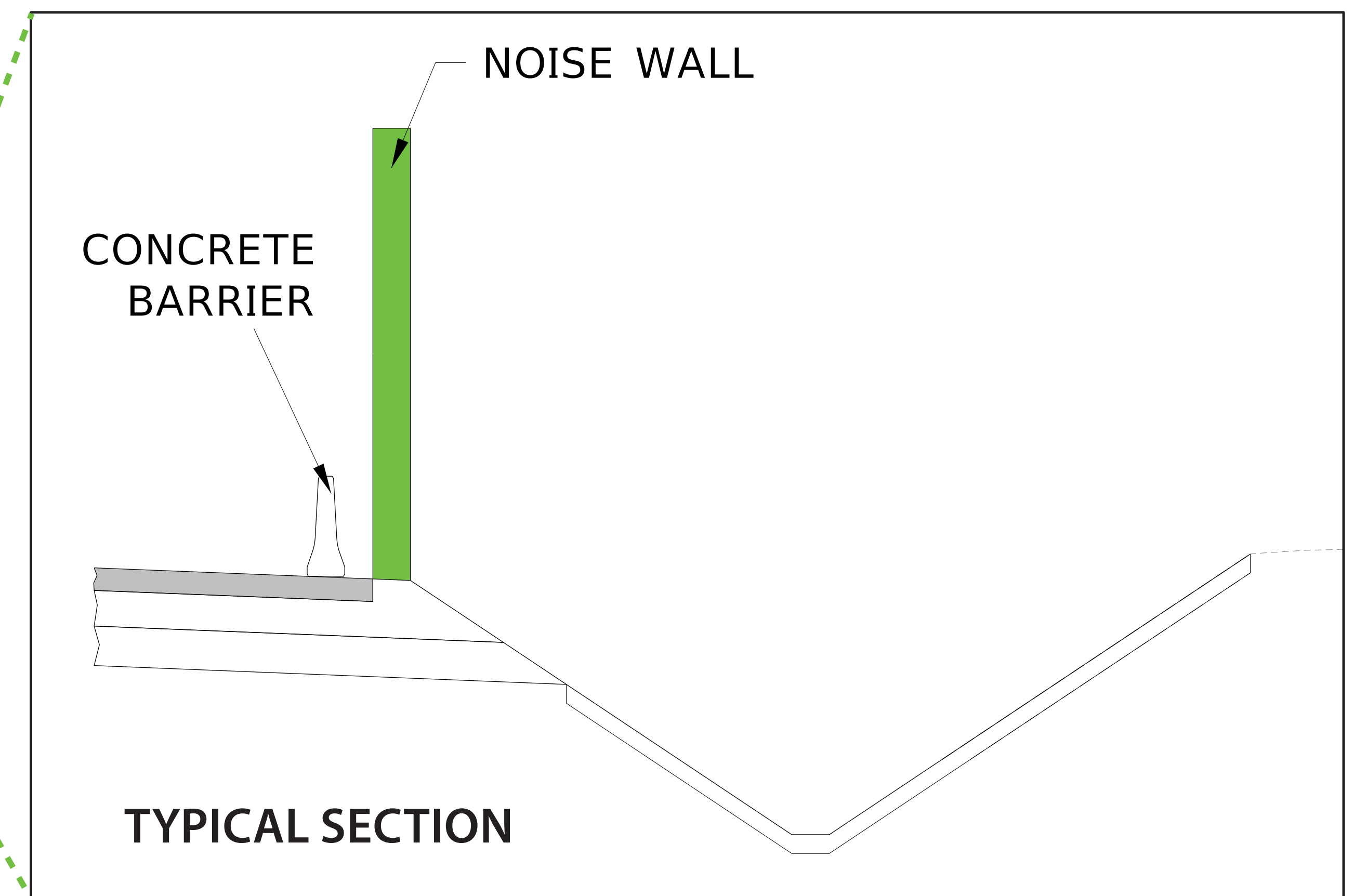
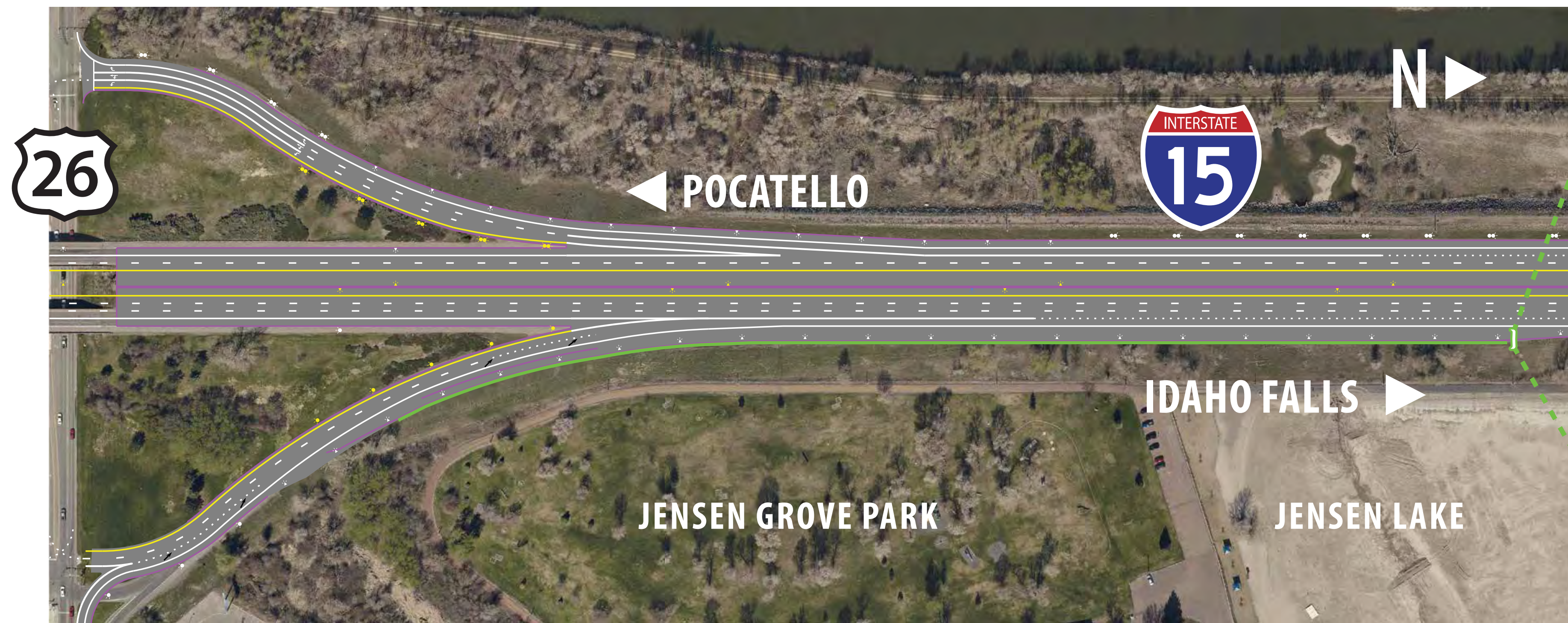


## US-26/ Blackfoot Interchange Exit 93

# Soundwall

ITD has conducted a noise analysis to determine the expected noise impacts of the project improvements. This analysis has indicated that building a soundwall is reasonable and feasible between Jensen Grove Park and I-15. The soundwall will be:

- 14 feet high.
- Approximately 1,700 feet long.





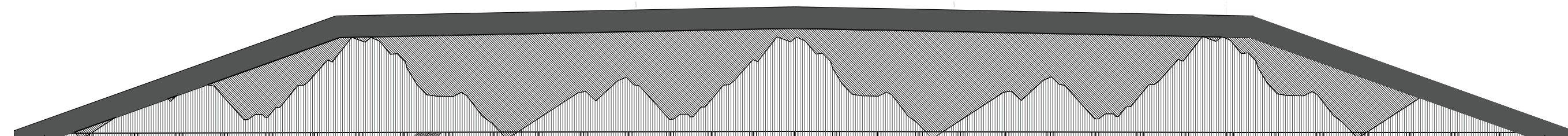


## US-26/ Blackfoot Interchange Exit 93

# Wall & Railing Aesthetics

ITD is designing improvements with the community and local natural scenery in mind. The new interchange design features aesthetic elements, including texturized walls and decorative railings consistent with other interchanges in the corridor.

### Aesthetic Examples



*I-15 US-26/Blackfoot Interchange (Exit 93) wall design example.*



*I-15 Northgate Interchange (Exit 73)*



*I-84 Ten Mile Interchange (Exit 42)*



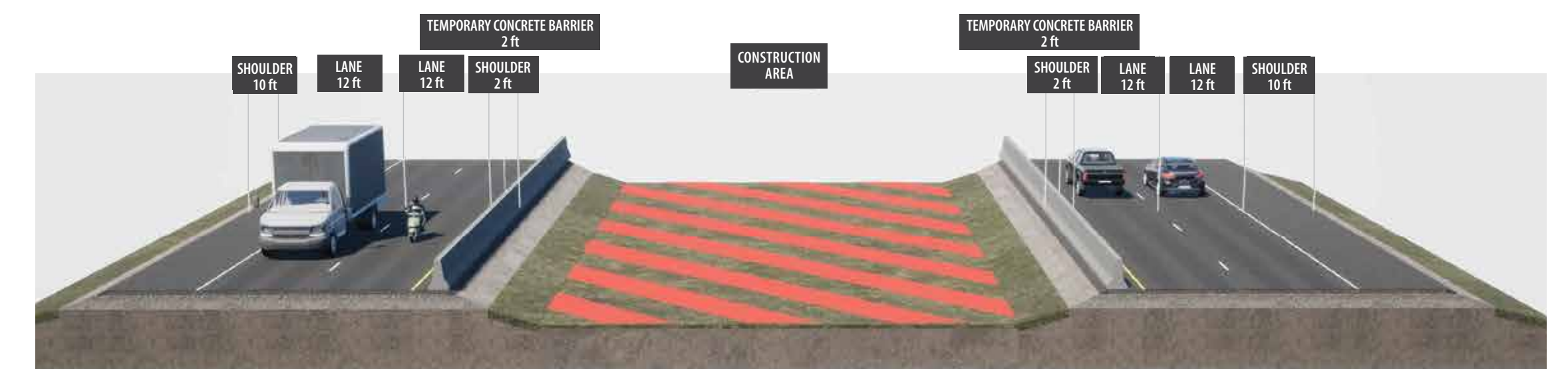


## US-26/ Blackfoot Interchange Exit 93

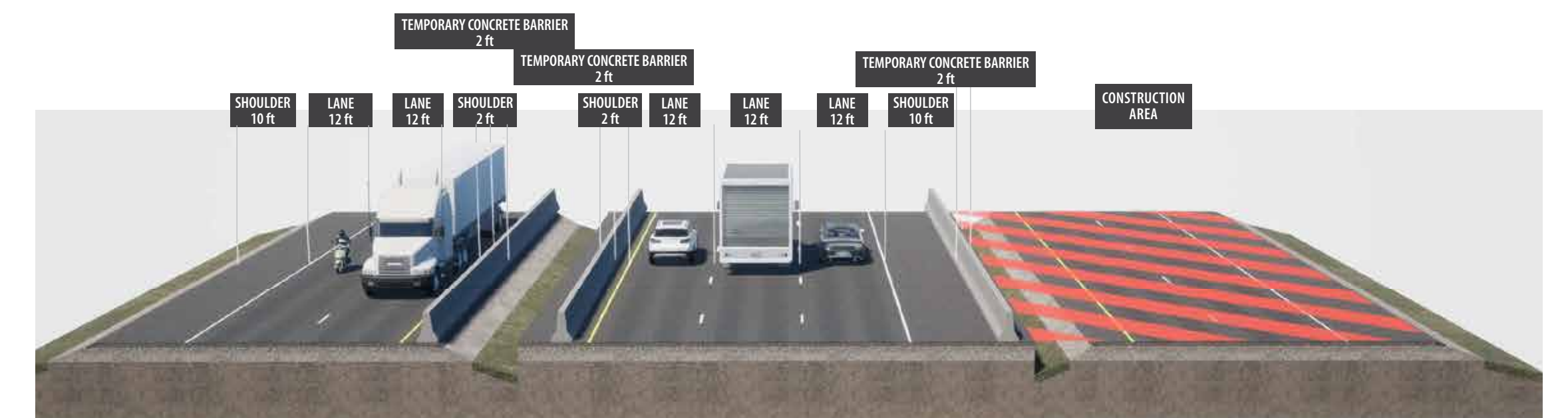
# Anticipated Construction Phasing

It is too early to know specific construction impacts. At this time, ITD anticipates using a phased approach that will keep two lanes of traffic open in each direction during peak traffic hours on I-15.

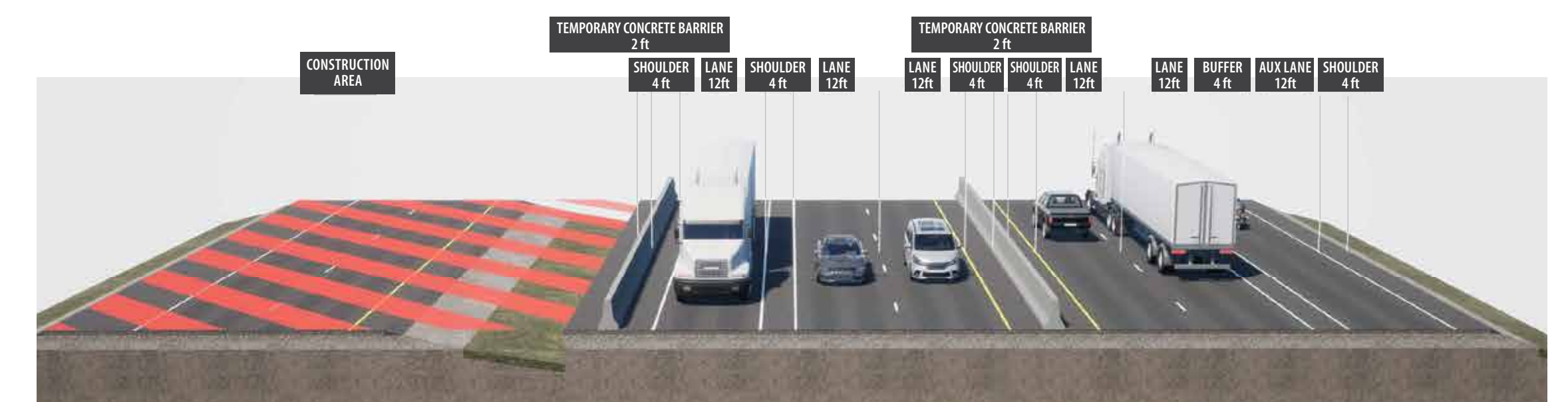
**Phase 1:** Crews will construct the new lanes in the median of I-15.



**Phase 2:** Northbound traffic will shift to the newly constructed lanes in the median. Crews will begin on the northbound lanes.



**Phase 3:** Northbound traffic will shift to the newly completed northbound lanes. Southbound traffic will shift to the new lanes in the median. Crews will construct the southbound lanes of I-15.





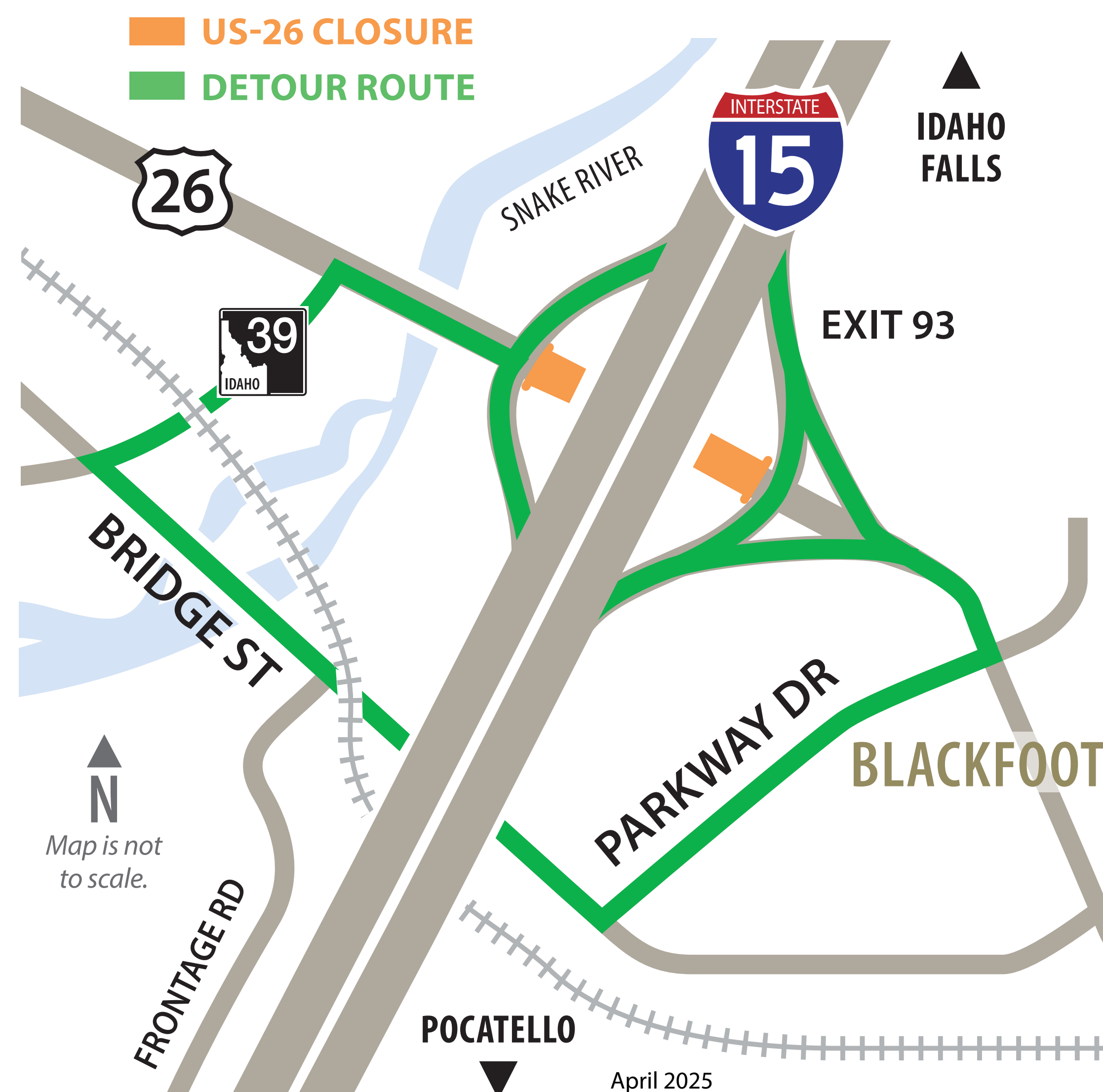


## US-26/ Blackfoot Interchange Exit 93

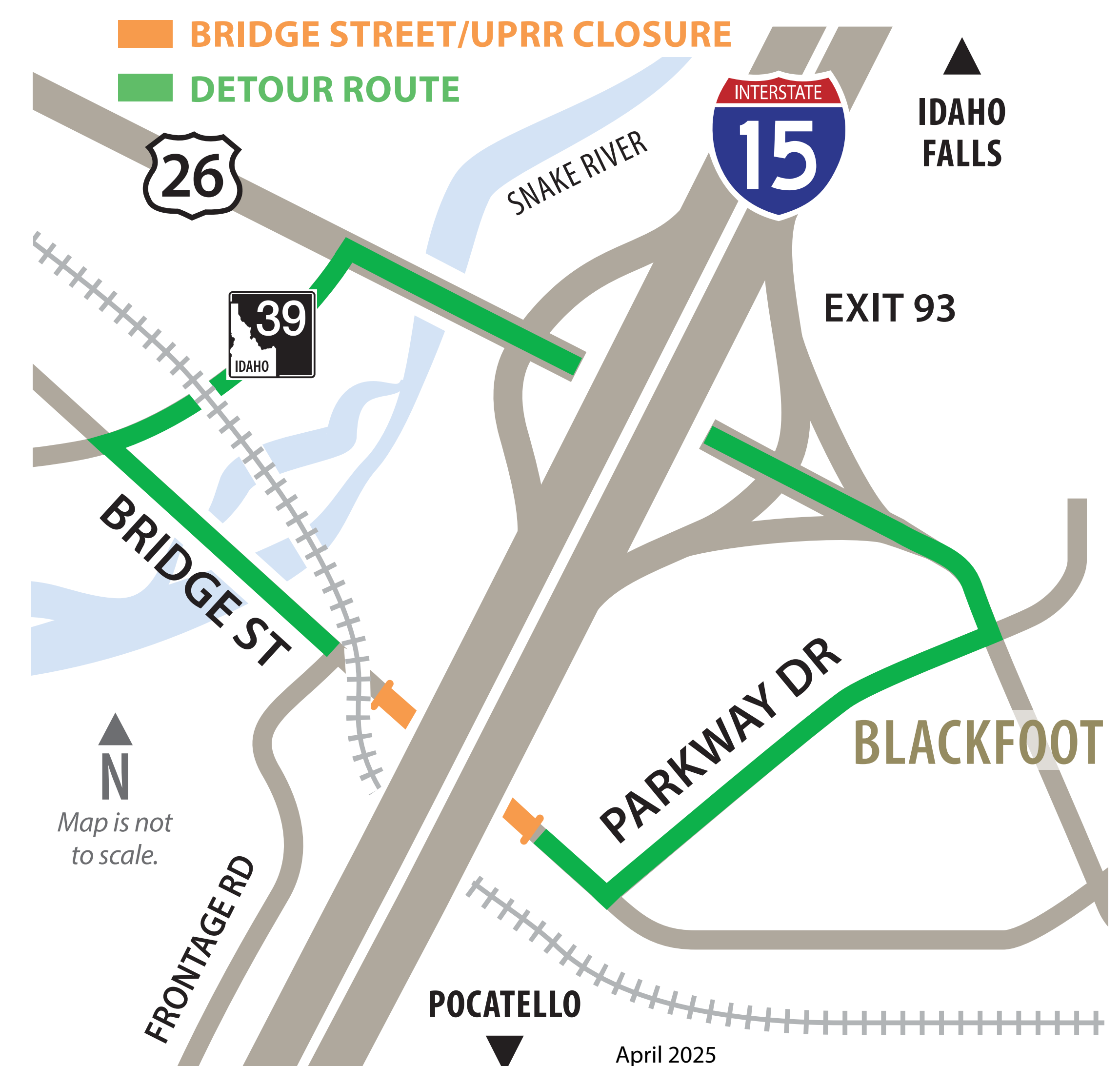
# US-26 and Bridge Street Detours

Short-duration nighttime closures on US-26 and Bridge Street are anticipated to keep the public safe while performing bridge work.

### US-26 Closure Detour



### Bridge Street Closure Detour







## Exit 89 to Exit 93 Widening

# Project Overview



ITD is developing plans to widen I-15 to three lanes in each direction in Blackfoot. The project begins approximately one mile north of the I-15 South Blackfoot Interchange (Exit 89) and ends approximately one mile south of the I-15 US-26/Blackfoot Interchange (Exit 93).

The purpose of this project is to:

- Improve safety.
- Improve mobility.
- Increase capacity.





## Exit 89 to Exit 93 Widening

# Process & Anticipated Schedule

**2022**

Began environmental evaluation and design work.

**Spring 2025**

**Host community open houses to present preliminary design options and request input.** **WE ARE HERE**

**2025–2026**

Develop design plans.

**2026**

Host community open house to present design plans and request input.

**2026–2027**

Complete design plans.

**TBD**

Construction (currently not funded).





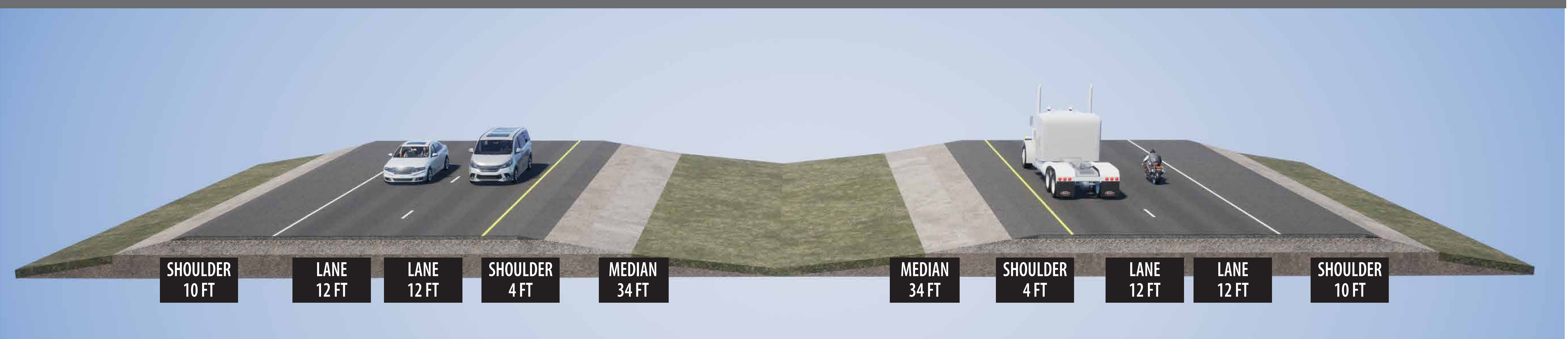
## Exit 89 to Exit 93 Widening

# Design Option 1 – Closed Median

### Design Option 1 – Closed Median



### Existing Conditions



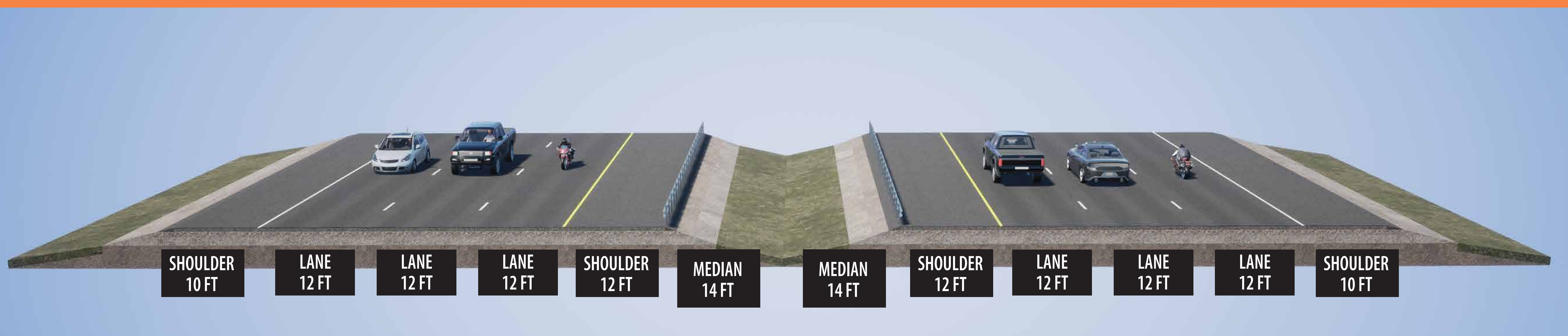




## Exit 89 to Exit 93 Widening

# Design Option 2 – Open Median

### Design Option 2 – Open Median



### Existing Conditions







## Exit 89 to Exit 93 Widening

# Recommended Design

ITD's design recommendation for adding a third lane is **Design Option 1 (Closed Median)** because it:

- Accommodates future growth and expansion.
- Minimizes right-of-way acquisition.
- Minimizes potential environmental impacts.
- Simplifies construction and minimizes traffic impacts during construction.

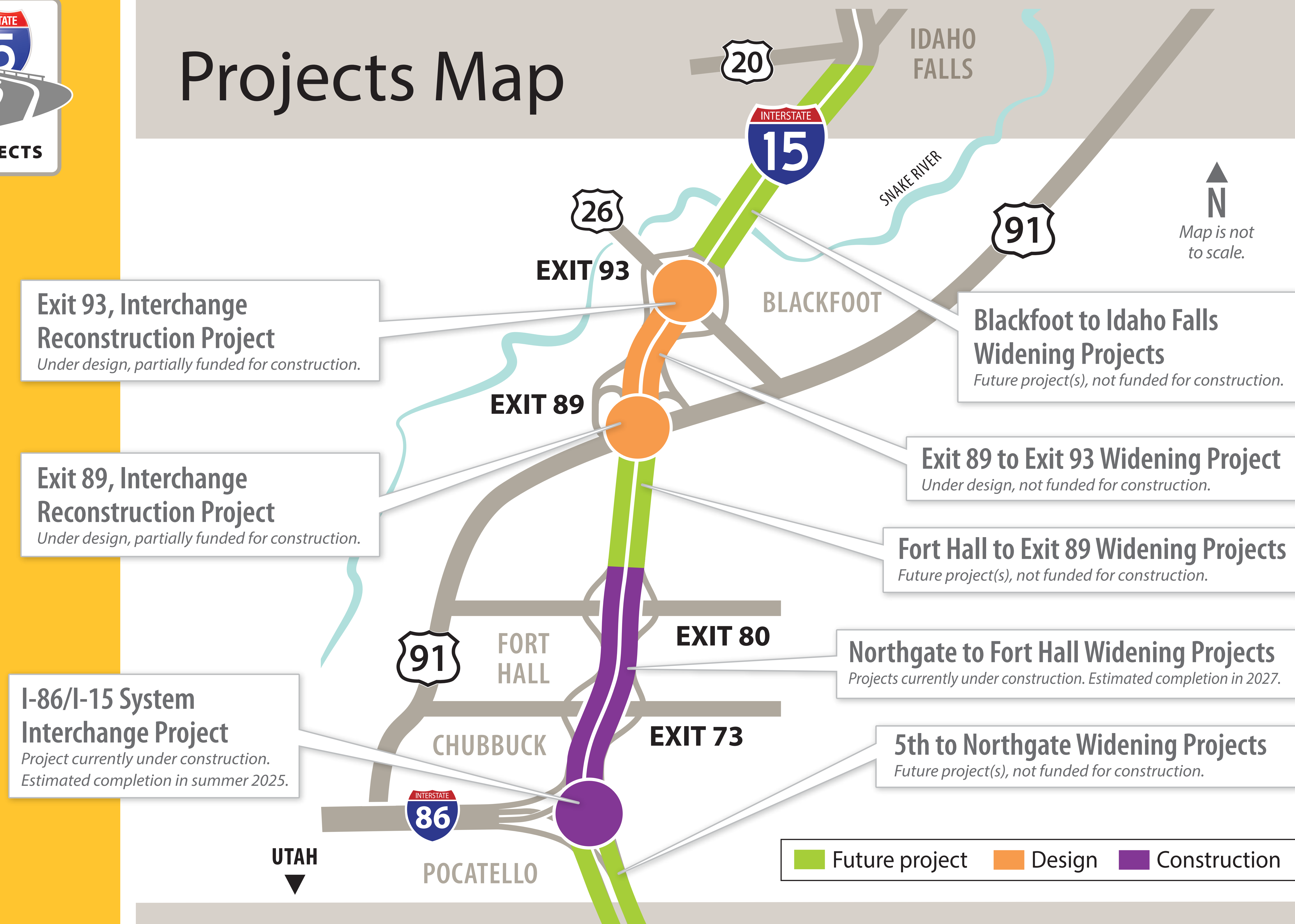
### Design Option 1 – Closed Median







# Projects Map







**South Blackfoot  
Interchange**  
Exit 89

**Exit 89 to  
Exit 93**  
Widening

**US-26/Blackfoot  
Interchange**  
Exit 93

# Thank you for attending today's meeting.

Please fill out a comment form and submit  
your input to the project team.



## FOR MORE INFORMATION

CALL  
**208-252-5553**

EMAIL  
**[info@pocatellotidahofalls.org](mailto:info@pocatellotidahofalls.org)**

VISIT  
**[itdprojects.idaho.gov/pages/  
i-15-corridor](http://itdprojects.idaho.gov/pages/i-15-corridor)**



**Your Safety • Your Mobility  
Your Economic Opportunity**

