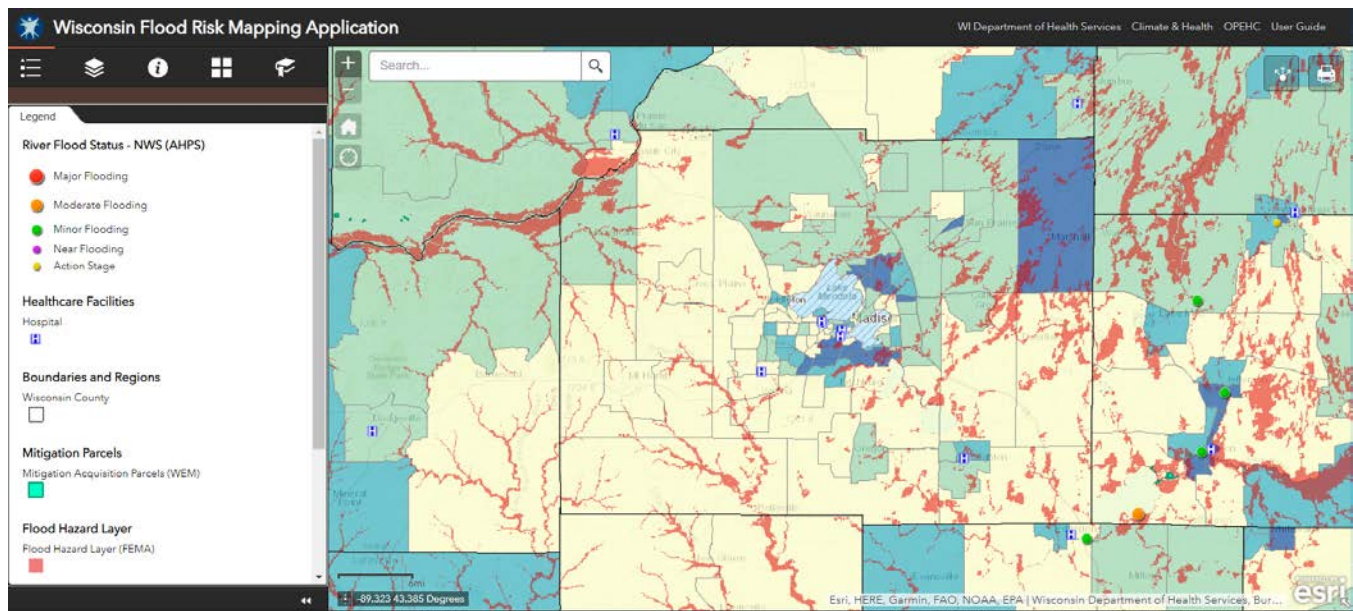


NEW FLOOD RISK MAPPING APPLICATION AVAILABLE TO WISCONSIN COMMUNITIES

The **Wisconsin Department of Health Services' Climate and Health Program** has released a new web-based tool to help local, regional, and state entities prepare for and respond to flooding events. The **Wisconsin Flood Risk Mapping Application (WFRMA)** is an interactive, user-friendly ArcGIS web application loaded with 30 statewide data layers that illustrate flood vulnerabilities and inform preparedness and response efforts.



Available data includes river flood status, National Weather Service advisories, current and forecasted precipitation, floodplain boundaries, and health care facilities. The WFRMA also contains specialized layers such as:

- **CDC Social Vulnerability Index:** Uses census data to determine the social vulnerability of every census tract based on the four themes: socioeconomic status, household composition, race/ethnicity/language, and housing/transportation. Possible scores range from 0 (lowest vulnerability) to 1 (highest vulnerability).
- **Mitigation parcels:** Displays flood prone property acquisitions and other mitigation projects funded through FEMA's Hazard Mitigation Assistance programs. Enables users to see where projects have already been completed and identify areas where future projects are likely to have the largest impact.

- **emPOWER**: Shows the electricity-dependent Medicare population (those that rely on electricity-dependent medical and assistive equipment, such as ventilators and wheelchairs, to live independently in their homes).

Urban planners, emergency managers, first responders, healthcare emergency readiness coalitions (HERCs), and the general public can use this information to assess their communities' unique risks and vulnerabilities. Users have the ability to print PDF maps directly from the web application, a potentially valuable feature for organizations with limited in-house mapping capabilities.

As this new tool evolves, the potential exists for additional data to be incorporated in future updates. Possible expansions could include historic flood data, 5-1-1 road conditions, land cover, or even a widget that would allow users to upload their own local data.

Learn more about the [Wisconsin Flood Risk Mapping Application](#) by watching a [tutorial](#). Information on DHS's Climate and Health Program is available at dhs.wisconsin.gov.

