

The poster features a background with a repeating pattern of stylized, overlapping circles in a light beige color on a dark blue background. A large, yellow, rounded rectangular shape is positioned in the upper left, containing the word "Blueprint" in a large, red, cursive font with a yellow outline. Below it, the words "for the" are written in a smaller, yellow, sans-serif font. A dark blue, arrow-shaped banner points to the right, containing the word "SPECTACULAR" in a yellow, sans-serif font. Below the banner, the word "WOW" is written in a large, red, sans-serif font, with each letter inside a yellow circle. A red, stylized line forms a large, abstract shape that frames the central text.

Blueprint

for the

SPECTACULAR

WOW

AIA OKLAHOMA
CONFERENCE ON
ARCHITECTURE

Tulsa, Oklahoma
Oct 3 & 4, 2019



BUILDING SUCCESS



SINCE 1974

WE TURN SPECTACULAR BLUEPRINTS INTO BREATHTAKING BUILDINGS,
SAVING TIME AND MONEY WITHOUT COMPROMISING QUALITY.
WE BUILD VALUE FOR YOUR CLIENTS.



CHICKASHA | OKC | TULSA | WWW.CMSWILLOWBROOK.COM



ENGINEERING CONSULTING SERVICES

Engineering Consulting Services (ECS) is a leader in geotechnical, environmental, construction materials and facilities engineering. Our expertise, solution-oriented focus, client responsiveness and commitment to employee and job safety have built our reputation in the industry as the firm to call when exceptional service matters most.



GEOTECHNICAL



CONSTRUCTION
MATERIALS



ENVIRONMENTAL



FACILITIES

“Setting the Standard for Service”

ECSLIMITED.COM

LETTER FROM THE PRESIDENT

Dear Colleagues: Welcome to AIA Oklahoma's 23rd Annual Conference on Architecture. This year's theme is "Blueprint for the Spectacular Wow." What better place than Tulsa with its new Gathering Place Park, upcoming home of the Bob Dylan Archives and plans to further solidify its iconic location along Route 66.

What is the "Spectacular Wow?"

We've pulled together great design architects with award winning parks and buildings that span the globe. You'll also hear from a woman who fought to become the first Native American Female Architect and fulfill a promise to her grandfather to transform her own small community. We'll learn about the latest innovations in biomimicry, workplace technology, and collaboration. We'll also celebrate the past through historic preservation and sketching as an art form. We have courses to help you improve your business and to motivate you to improve your communities. Take a break from the conference center to check out one of our great tours and experience Tulsa in a whole new way. We have tours of the Gathering Place led by Crossland Construction, as well as some downtown Tulsa tours that you won't want to miss. Don't worry, you can still get 10 hours of HSW!

We're thrilled to be hosting our Thursday Night Reception at the Gathering Place. As one of the first private receptions allowed in the space, you'll have plenty of time to explore all of the incredible things the Gathering Place has to offer...or relax with a beer and great conversation.

I would like to thank planning committee members for their time, ideas and energy in planning what I know will be a great conference: Jack Morgan, Leslie Goode, Michelle Morrow, Francis Wilmore, Kate Cofer, Darshan Patel, David Reed, Kristi Warren, Catherine Montgomery, Darla Mullett, Dawn Byram, Mark Gandy, Suzanne Bilbeisi, and the staff of AIA Oklahoma, Lindsey Ellerbach and Melissa Hunt.

Finally, and most importantly, I would like to thank our Industry Partners and Sponsors, without whose support we would not be able to hold this conference. I encourage each of you to take time to visit with and thank them for their participation and support.

I hope that over the next couple of days you will feel a renewed sense of excitement and inspiration about Architecture.

Lanny McIntosh, AIA
President AIA Oklahoma





103

8:00 – 9:00 A.M.

9:00 – 9:30 A.M.

9:30 – 10:30 A.M.

10:30 – 11:00 A.M.

11:00 A.M. – 12:00 P.M.

12:00 – 1:30 P.M.

1:30 – 2:30 P.M.

2:30 – 3:00 P.M.

3:00 – 4:00 P.M.

4:00 – 5:30 P.M.

6:00 P.M.

REGISTRATION

WELCOME

AIA Oklahoma President, Lanny McIntosh, AIA

OPENING KEYNOTE

Gathering Place, More Than Just A Park (1 LU) Oak Ballroom Tony Moore

VISIT WITH VENDORS / TRADE SHOW BINGO

BREAKOUTS

A. Lean in the Architectural Process: An example of what not to do Melanie Gilbertson, CM-Lean, LEED AP BD+C & Scott Oglesby, AIA, LEED AP, NCARBA (1 LU) Sunflower Room

Shorter deadlines, shrinking margins, and increasingly complex projects – all are challenges facing every design firm in today's market. This presentation will inform attendees how FSB applied Lean construction practices to the design process, share lessons learned as part of the journey, and give attendees tangible takeaways that can be applied tomorrow, on their next project, or as a firm-wide transformation, in order to reliably meet or beat deliverable timelines and protect margins, without sacrificing cross-discipline collaboration.

B. Biomimicry and Architecture Jay Yowell, AIA (1 HSW) Thistle Room

The architectural profession is at a critical point in history with regards to reducing its impact on the natural environment. The lessons learned from natural systems can be applied to architecture to lessen its environmental impact, and this is a critical point to ask: Will architects utilize construction technology as well as advanced scientific knowledge to create an architecture that behaves like nature? It is vital we look beyond the forms in nature and understand the principles behind them in order to create effective solutions to environmental issues.

C. Growing Pains: Community Engagement and the Impact of Unique Pedagogy During Planning and Design Development Sarah Gould, AIA & Emily Hutton (1 HSW) Emerson Elementary

Tulsa Public Schools' Emerson Elementary is the first public Montessori school in Oklahoma. Ensuring project priorities were established and stakeholders' needs were met for community buy-in required extensive research, focus groups, and discussions beyond the work done for most educational project design. In this presentation and project tour, we discuss community engagement methodologies from the perspective of the architect and the district's Director of Community Engagement and explore design decisions driven by the Montessori curriculum.

** This program will be held at Emerson Elementary so advance registration is required. Registrants should meet at the registration desk at 10:40 a.m.**

LUNCHEON KEYNOTE SPEAKER

Olson Kundig and the Generalist Practice: How culture and cross disciplinary experiments inform design Daniel Ralls, AIA (1.5 HSW) Oak Ballroom

Daniel will present on his firm's unique approach to architecture - that buildings can serve as a bridge between nature, culture, histories, and people, and that inspiring surroundings have a positive effect on people's lives. Through sharing both completed and on-going projects, Daniel will discuss the culture of dialog. From research grants to travel fellowships and weekly project crits to experimental storefront installations, learn how the office prioritizes engagement within the office and with the world beyond. How does this unique approach to business create a healthier environment for those that interact with the built environment?

BREAKOUTS

D. Hacking Practice – Using Technology to Transform Our Work Karl Daubmann, AIA (1 LU) Sunflower Room

Architects typically design buildings but what happens when we explore the design of practice through the lens of potential technological disruption. The organization of firms and project teams often inherit accepted models without asking broader questions about the relationship between design and business. Project delivery methods and new technologies can create an environment for innovative design and greater professional value for clients. Using design case studies, attendees will see what is possible when design, technology, and business occur in an integrative manner.

E. Historic Preservation: The Advanced Course Catherine Montgomery, AIA (1 HSW) Thistle Room

Through the use of project examples, the course will elevate the conversation regarding Historic Preservation beyond the basics. Although project examples will be prepared in advance, attendees are encouraged to bring their own Historic Preservation conundrums for discussion. Common challenges associated with Historic Preservation projects that will be included in the discussion include overcoming building code stumbling blocks; effectively preparing project documentation for approval by local, state, and federal authorities; and the benefits of conducting historical research for projects involving existing buildings even when Historic Preservation is not a specific project goal.

T-1: Downtown Art Deco Tour (1 LU)

The Tulsa Foundation for Architecture will lead this tour through some of Tulsa's most iconic art deco buildings. Learn the stories behind one of the nation's best collections of art deco architecture on this walking tour.

VISIT WITH VENDORS / TRADE SHOW BINGO

BREAKOUTS

F. What if you could win 3X as many of the projects you already pursue? Jeff Echols, Assoc. AIA (1 LU) Sunflower Room

The national average hit rate for architecture firms is about 20%, but there are firms that are winning 50%, 60%, and even more of the projects they pursue. If your hit rate is near the national average, that means a gap has opened between how you're developing new business and the way your prospects are really hiring. Learn how to close the gap and get ahead of the selection process.

G. Are You Prepared For Community Shelter Design? Larry Curtis, MS, PE (1 HSW) Thistle Room

This course will explain the differences between Best Available Refuge Areas, Safe Rooms and Storm Shelters, and the code standards and guides that define them. The presentation will include discussion regarding the selection of BARA (FEMA P-431), IBC's referenced shelter design standard (ICC 500), and FEMA P-361 when federal funding is provided.

T-2: Gathering Place Tour (Led by Crossland Construction) (1 LU)

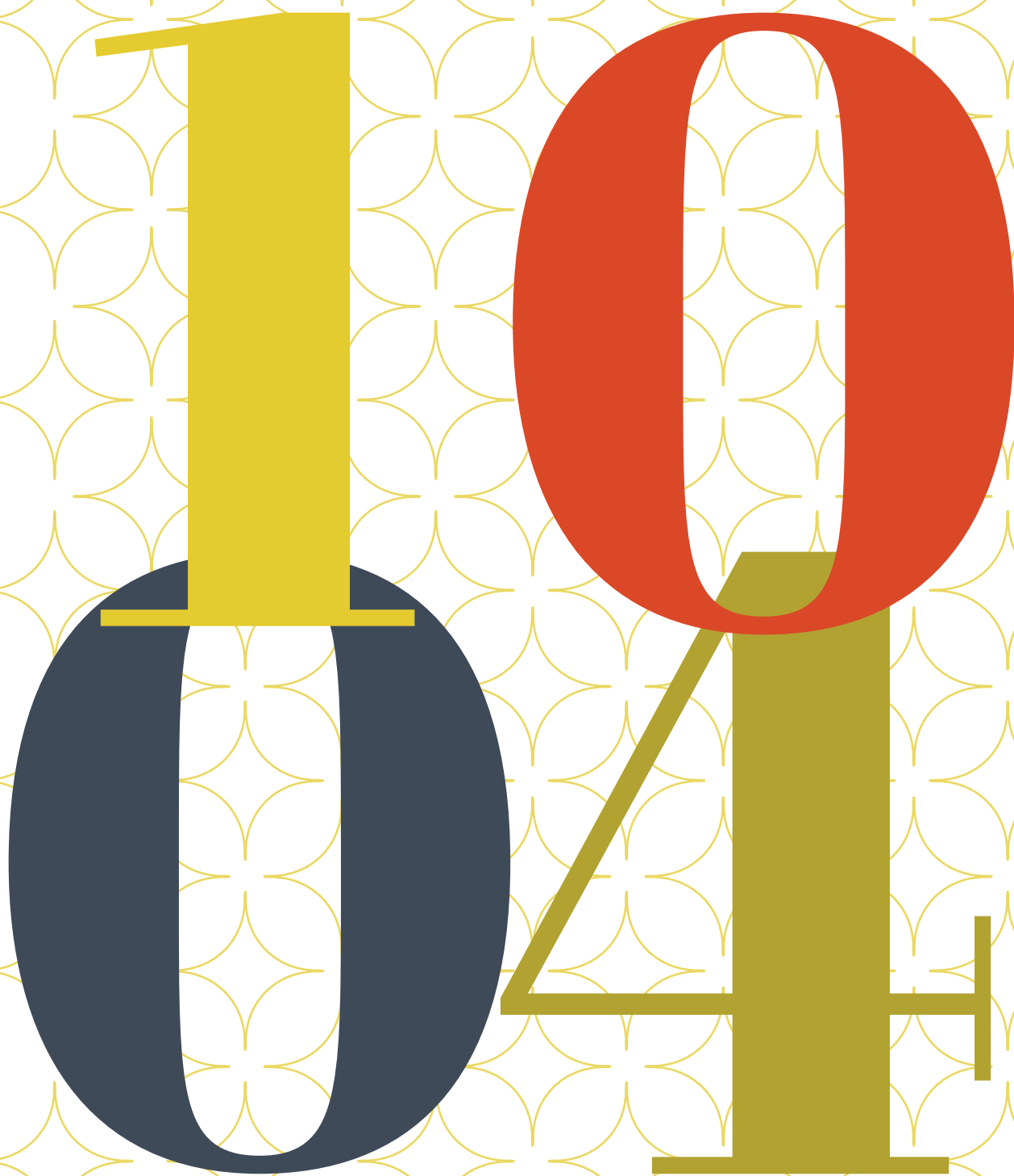
There's no better way to experience the Gathering Place than touring it with the people who built it. Let Crossland Construction take you on a tour through this spectacular park.

CLOSING KEYNOTE

Gathering Place, a new park typology Scott Streeb (1.5 HSW) Oak Ballroom

RECEPTION AT THE GATHERING PLACE

This year's conference reception will be held at The Gathering Place. Declared America's #1 New Attraction by USA Today Magazine, we are lucky to host one of the rare private events at the park. Nothing says "spectacular wow" quite like this 100-acre, \$465 million dollar park along Tulsa's Arkansas River. Have a drink, wander the park, and catch up with architects across the state at our 2019 Conference reception.

A large, stylized number '1041' is the central focus. The '1' is yellow, the '0' is dark blue, the '4' is olive green, and the final '1' is olive green. The background is white with a repeating pattern of yellow-outlined, four-pointed star or floral shapes. The entire graphic is set against a solid olive green background that also contains a vertical list of time slots on the right side.

1041

7:30 – 8:30 A.M.

8:00 – 8:30 A.M.

8:30 – 9:30 A.M.

9:30 – 10:30 A.M.

10:30 – 11:00 A.M.
11:00 A.M. – 12:00 P.M.

12:00 – 1:30 P.M.

1:30 – 2:00 P.M.
2:00 – 3:00 P.M.

3:00 – 4:30 P.M.

REGISTRATION**MEMBERSHIP MEETING**

AIA and Associate AIA Members are invited to join the AIA Oklahoma Board of Directors for a chapter and legislative update. **Mistletoe Room**

BREAKOUTS

H. Managing Design: Crossing the Line - Conversations, Controls and Collaboration Best Practices *Michael Alan LeFevre, FAIA, NCARB, LEED AP BD+C*
(1 LU) Sunflower Room

In presenting his Project Design Controls Framework, Michael LeFevre, FAIA, offers best practices for managing design and helping teams wrestle with the constructs of schedule, meeting budgets, and working together. In this inclusive, empathetic look at future practice, he employs vivid imagery and personal case studies on projects such as the new Apple Park Campus and Mercedes-Benz Stadium to share new practice modes. In this boundary-breaking, inspirational talk, LeFevre offers a "self-help book" for cross disciplinary collaboration and design, building and industry transformation for current and aspiring practitioners.

I. Understanding Today's Operable Partitions *Kevin Schulz* **(1 HSW) Mistletoe Room**

This course covers operable partitions, operable glass walls, and vertical partitions. Covering STC, NIC, finishes, operation, design, Revit, and end use

J. The Wow Factor and the Spectacular Line *Mohd Bilbeisi* **(1 LU) Thistle Room**

This course is an interactive session/ presentation about endowing the typical architectural contour drawing with elements of graphic vitality and wow. This engaging course focuses on the use of graphic points, pen pressure, graphic value, perspectival geometry and pizzazz to achieve focus and interest within the drawing. Participants will be presented with 5 in x 8 in journals, pens, pencils, and required to partake in a series of bilateral exercises with the goal of raising their visual acuity and graphic prowess to a new level of awareness.

KEYNOTE SPEAKER

Indigeneity in Contemporary Architecture *Tamara Eagle Bull, FAIA, NCARB, AICAE* **(1.5 HSW) Oak Ballroom**

As a leader in contemporary Indigenous architecture, Tammy's journey started as a child growing up in two worlds. Influenced by culture, family and a desire to give back to her people, her path lead her to establishing Encompass Architects, one of the leading Native owned firms in the country. Encompass works on a wide variety of projects for tribal nations across the United States.

VISIT WITH VENDORS / TRADE SHOW BINGO**BREAKOUTS**

K. Culture vs. Sub-Culture: Why Consistency Matters *Matt Tipton* **(1 LU) Sunflower Room**

Company culture shouldn't be something that just develops in the background, although it often is. If you're ready to take charge of creating the right company culture for your business, this session is for you. Clear, concise, and consistent policies are critical for your company's long-term success. Learn about the importance of policy and consistent management to create the right company culture.

L. Generative Tools in the Middle of Nowhere *Mark Bacon, AIA, Zach Soflin, & David Newton* **(1 HSW) Thistle Room**

How will the role of the architect change in a future of artificial intelligence-driven design tools? How can subjective judgements and qualitative goals be reconciled with quantitatively-driven tools? This session will explore these questions through the lens of multi-objective optimization and demonstrate workflows to balance project goals that are both aesthetic and quantitative in nature.

T-3: Gathering Place Tour (Led by Crossland Construction) **(1 LU)**

There's no better way to experience the Gathering Place than touring it with the people who built it. Let Crossland Construction take you on a tour through this spectacular park.

LUNCHEON KEYNOTE / RECOGNITION OF AXP FIRMS & LEADERSHIP AIA GRADUATES

Auralizing the Built Environment *Ryan Bizorek* **(1 HSW) Oak Ballroom**

The digital revolution has greatly changed many aspects of our daily lives. Although there is a 'technology can solve it all mentality' the built environment still plays a great role in our personal experience and the culture it can create. The acoustic environment is an invisible layer of design, but is increasingly becoming a differentiator. The lecture will explore the influence of acoustics on the built environment, highlight experiential design tools to assess the predicted performance, and look at future technologies and trends that will shape our aural environment.

VISIT WITH VENDORS / TRADE SHOW BINGO**BREAKOUTS**

M. Evaluating the Carbon Performance of design alternatives: Case studies and simple implementation *Tom Spector, AIA* **(1 HSW) Sunflower Room**

As concepts like carbon credits and carbon taxes make their way into legislative discussions, it will likely become important for architects to help owners make responsible decisions regarding the carbon generation of proposed and existing buildings. This course will introduce a free carbon analysis software for architecture entitled Athena, describe how it was put to use in analyzing the alternatives for the iconic United Nations Secretariat building in New York, show how carbon analysis can be integrated into the design process to help building owners make optimal decisions, and provide architects with a potentially important value-added service.

N. Architects Influencing Change Through Policy, Programs and Design *Ric. Abramson, FAIA & Timothy Hawk, FAIA* **(1 LU) Thistle Room**

This session will examine how design vision and innovation can affect the thinking of design makers and elected officials and lead to positive change in local policy. It will also touch on the psychological aspect and importance of "storytelling by design" and how strong graphic communication tools and facilitation techniques can be invaluable in connecting with the general public and can build the necessary momentum for that desired change. Finally, this session will establish connections to business development and how thoughtful and well-communicated design solutions can generate new business.

T-4: Tulsa Sound: History & Music Tour **(1 LU)**

The Tulsa Foundation for Architecture will lead this tour through parts of Tulsa's history rich music scene. From the famed Cain's Ballroom to the future of the OK Pop Museum, learn about Tulsa's spectacular music history.

CLOSING KEYNOTE

What is a Museum and Who Is It For? *Jame Anderson, AIA and Michael Ford* **(1.5 HSW) Oak Ballroom**

This session focuses on the design of our cultural sites and places: why are they important and what does accessibility mean to audiences and visitors that convene there for learning, discovery, and community? How can we all look to a change in perspective and a willingness to design around activities, and with constituencies, to make these important places engaging, and fun.

S P E A K E R S



Tony Moore
Executive Director, Gathering Place

As a hospitality park executive with more than 30 years of experience in the entertainment industry, Tony has served in a leadership capacity for some of the most respected entertainment brands including Universal Studios, SeaWorld Parks and Tampa's Lowry Park Zoo. He is now serving as the Executive Director for a one of a kind, world-class, urban park, Gathering Place, in Tulsa, Oklahoma. Since 2016 he has served as the Executive Director for Gathering Place. He worked closely with park designers and park builders in managing all end-user, guest interface initiatives. Tony's vast industry experience along with all the efforts of his entire team and colleagues played a critical role in the successful opening of the park. Today, Gathering Place was named USA Today's Best New Attraction of 2019. This \$465 million dollar park is a one of a kind, World Class Park, right here in Tulsa, Oklahoma. Tony's goal for the park is that it continues to grow as an inclusive space that unites all Tulsans regardless of age, culture or socio-economics. A place that not only engages, educates and excites; but likewise a place that helps to make Tulsa a more vibrant place to live work and play.



Melanie Gilbertson, CM-Lean, LEED AP BD+C *Flintco*

Melanie spent 10 years in construction operations as a project manager before transitioning to Flintco as a Lean Manager in 2016. Today Melanie oversees the implementation and maintenance of Lean practices on over 50 Flintco projects company-wide. She develops curriculum and provides education to internal and external users on Lean2.0, Flintco's approach to Lean, as well as specific practices and general Lean knowledge. Melanie presents Flintco's thought leadership to external Lean practitioners in the company's chosen markets, and through involvement in the Lean Construction Institute (LCI) at a national level. She works in cross-functional teams with other departments to implement Lean strategy throughout the company in support of work acquisition, execution, quality, safety, and Flintco personnel. Melanie is a graduate of Oklahoma State University with a B. S. in Construction Management. Her Lean Journey started in 2009.

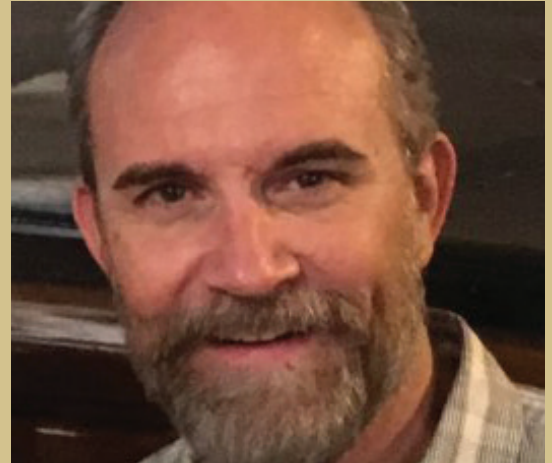
Scott Oglesby, AIA, LEED AP, NCARBA
FSB Architects & Engineers

A graduate of Drury University in 2005 and the University of Auckland in 2009, Scott has 14 years of experience. He has been a Project Architect at FSB for five years and is the Architectural Production Manager, managing over 30 architects and interns. His experience spans a wide variety of project types, including K-12 schools, vo-techs, higher education, community centers, laboratories, FEMA safe rooms, and corporate offices. Scott was the project architect for the recently completed Endeavor Undergraduate Laboratory at OSU for the College of Engineering, Architecture and Technology, which is an innovative one-of-a-kind facility that encourages interaction and cross pollination among faculty, students, industry partners and visitors. Scott was first exposed to Lean and the pull planning process by Flintco, when construction began on the Endeavor Lab. Since then, Scott has become a champion of Pull Planning and its application to the architectural design process.



Jay Yowell, AIA
Architecture / Oklahoma State University

In professional practice and academic teaching Jay has been focused on sustainability. He was the founder of the Sustainable Design Task Force at RTKL, the AIA COC Committee of the Environment and the Oklahoma Sustainability Network. His Master's degree research was on Biomimetic Building Skins. He taught as an adjunct instructor for thirteen years at OU and has been full-time instructor at OSU for two years. In the Spring of 2018 he taught a course on Biomimicry and Architecture. Honors such as the Green Award for Sustainability and the RTKL Kagan Fellowship have been as a result of his sustainability work. In the summer of 2016, Jay spent a month in Italy as a Nature, Architecture and Habitat Resident studying biomimicry and local architecture. Dozens of professional presentations (including national AIA, NeoCon, and EnvironDesign) around the U.S. has allowed him to share this knowledge.



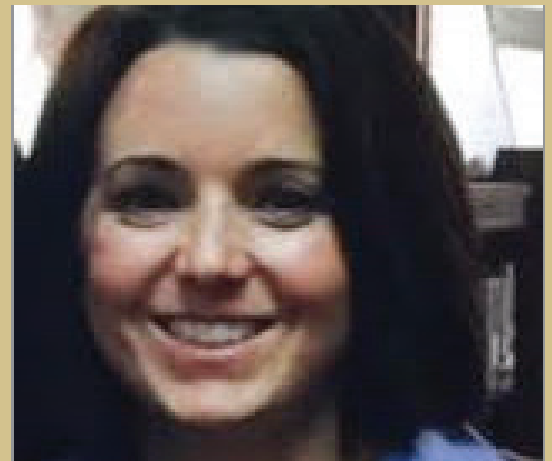
Sarah Gould, AIA, A4LE
KKT Architects

As an owner and principal at KKT Architects, a full service architecture and engineering firm in Tulsa, OK, Sarah Gould is a driving force in the growth and development of the company as we meet the needs of our quickly growing client base. Education and community are her passions. She is President of Oklahoma A4LE and serves on the board of the Foundation for Tulsa Schools. Sarah earned her Master of Architecture from the University of Texas, Austin and her Master of Architectural Urban Studies from the University of Oklahoma, Tulsa. A seasoned presenter, she was selected to speak at the 2019 A4LE Regional Conference in San Antonio, the 2018 AIA Oklahoma Conference in Enid, and the 2018 AIA National Conference in New York City. Sarah believes that human potential is both celebrated and promoted through architecture, and she loves practicing in her home town.



Emily Hutton
Tulsa Public Schools

Emily Hutton is a director at Tulsa Public Schools, an urban school district in Tulsa, Oklahoma that serves 38,000 students. With over ten years of public policy and external affairs experience, Emily leads the community engagement work for large dynamic projects that have a city impact. Previously, Emily worked as the communications director for the Oklahoma State School Boards Association. She is pursuing her Master's in Public Administration from the University of Illinois – Springfield.





Daniel Ralls, AIA
Olson Kundig

Daniel Ralls joined Olson Kundig in 2007 and was named Principal in 2018. Over the last eleven years, Daniel has worked extensively in residential design, honing his expertise at a range of scales on local, regional and international projects. Today, Daniel's project types include residential, cultural, mixed-use, commercial and art installations. Daniel enjoys the problem-solving aspect of his work, always striving for excellence in his designs. In his complex large-scale projects, many of which are international, Daniel values his close working relationships with local tradespeople to determine how best to incorporate their particular expertise and regional building traditions into the design process. Daniel is currently working on projects around the world, in locations ranging from the Pacific Northwest to Indonesia, the UK and Mexico.



Karl Daubmann, AIA, FAAR
Lawrence Technological University / DAUB

Karl Daubmann is an architect at the forefront of digital design. He is Dean of the College of Architecture and Design at Lawrence Technological University. His architectural practice DAUB (design, architecture, urbanism, building) focuses on expanding the relationship between design and technology, particularly between digital/robotic fabrication and building. Daubmann is a Fellow of the American Academy in Rome. Between 2010 and 2014 Daubmann was the Vice President of Design and Creative Director for Blu Homes where he led a multidisciplinary team that developed green, prefab houses that folded for shipping across North America.



Catherine Montgomery, AIA
Preservation and Design Studio

Ms. Montgomery is president and founder of the Oklahoma City based Preservation and Design Studio, an architecture and interiors firm specializing in Historic Preservation. Including a variety of building types, most of the Studio's projects seek preservation tax credits and some are in locally zoned Historic Preservation districts. PandDStudio also prepares existing structures reports, HABS/HAER documentation, historic architectural surveys, window and materials surveys, and National Register nominations. Catherine has extensive experience with the Historic Preservation Act and helping federal agencies satisfy their obligations under Section 106 review. Most PandDStudio projects meet the Secretary of the Interior's Standards for Rehabilitation either by choice or requirement.



Jeff Echols, Assoc. AIA
Revenue Path Group

Jeff Echols has the unique ability to drill to the heart of an organization's purpose and use that fire to forge messaging that not only wins more work, but guides the entire organization. In times of velocity and uncertainty, Jeff's unique experience earned over more than two decades in the architecture industry is a calming force that helps leaders understand how to win in today's highly competitive arena by activating their prospects to make better and faster decisions. His speaking clients have included American Institute of Architects (AIA), Construction Specifications Institute (CSI), and Society for Marketing Professional Services (SMPS).

Larry Curtis, MS, PE
Kirkpatrick Forest Curtis PC

Larry Curtis is a co-founding partner of Kirkpatrick Forest Curtis PC (KFC Engineering) and has over 34 years of experience as a structural engineer. He has provided countless storm shelter designs and peer reviews for community tornado shelter designs, and has worked closely with staff at Texas Tech University involving Best Available Refuge Area Studies. Mr. Curtis is a professional member of the National Storm Shelter Association and has presented at NSSA Seminars. Mr. Curtis has proven expertise in the design of steel, concrete, wood and masonry framing systems on new and renovation projects, ranging in size from small renovations to large multi-million dollar facilities. Project types include K-12 school facilities, community tornado shelters, hospitals, health care, institutional, higher education, athletics, on-call and oil & gas foundation projects.



Scott Streeb
Michel Van Valkenburg Associates

Scott is a Senior Associate and a key member of the MVVA creative team. He has led the schematic and conceptual design of several large public projects, including A Gathering Place in Tulsa, Chelsea Waterside Park Playground in Manhattan, the Coney Island Amphitheater in Brooklyn, and Maggie Daley Park in Chicago. In these projects Scott has helped integrate program into an engaging landscape framework, as well as designing play spaces and play equipment. He has also contributed to the design and construction documentation of Jacob K. Javits Plaza in Manhattan and numerous phases of Brooklyn Bridge Park. Currently, he is involved in the design of the Port Lands Flood Protection project in Toronto, helping translate program and concepts into plan and eventually into an exciting new urban and environmental context.

He is a registered landscape architect in New York and Colorado.



Michael Alan LeFevre, FAIA, NCARB, LEED AP BD+C
DesignIntelligence

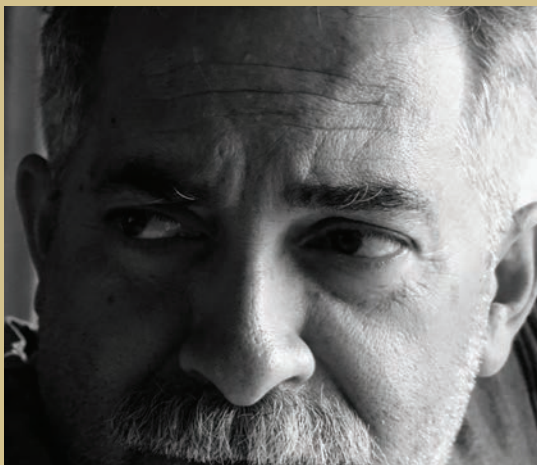
Michael LeFevre holds a Master in Architecture degree (Summa Cum Laude, University of Michigan, 1977), and is a winner of design, collaboration and technology awards, including two Progressive Architecture Design Award Citations. Formerly, Principal, Lord Aeck Sargent; Designer, Heery International; and Adjunct Instructor in Architecture at the University of Michigan, as founder of Holder Construction's Planning & Design Support and Building Information Modeling services groups, he has worked with more than 70 leading design firms in project collaborations to realize stellar project design. In 2012, he was elevated to the AIA's College of Fellows. As a top-rated keynote speaker, he has presented to 150+ groups, nationally and internationally and been cited, written for, and been featured in cover stories for DesignIntelligence, ENR, and other industry publications. His debut book, *Managing Design: Conversations, Project Controls and Best Practices for Commercial Design and Construction Projects* will be published June 2019, Wiley.



Kevin Schulz
Hufcor Inc.

Kevin Schulz, an architecture graduate from University of WI Milwaukee has worked for Hufcor Inc, the world's most used brand of operable wall systems for the past 8 years. Managing a network of independent dealers across 25 state, he has worked on all projects from small openings to multi-million dollar operable wall projects. Using his background in architectural design he focuses on making operable walls aesthetically pleasing, and unique to the building.





Mohd Bilbeisi
Oklahoma State University

Mohd Bilbeisi is an imaginative professor, architect, author, illustrator, and watercolorist. He is an award-winning educator. His students have won hundreds of national and international architectural design competitions under his direction in the design studio. He is also the recipient of many national and international awards in teaching, drawing and illustration. He is the recipient of the OSU Eminent Professor award in addition to placing first in the KROB Architectural Delineation Competition and First place in the American Society of Architectural Illustrators' International Competition in the sketch category. Professor Bilbeisi has been a faculty member at Oklahoma State University School of Architecture since 1998. He lectures nationally and internationally in the fields of Design, Graphic Communication, and History/Theory of Islamic Architecture. He recently published *Graphic Journaling*, a university textbook that investigates the relationship between drawing and the written word.



Tamara Eagle Bull, FAIA
Encompass Architects

Tammy Eagle Bull became an architect in fulfillment of a long term family vision. Long before she was born, her grandfather told her father and uncle that one of them should go to architecture school and the other should study law. His reasoning was that someday their Oglala Lakota community in Pine Ridge, South Dakota would need architects and lawyers and it would be best if those professionals came from within. But in the 1950's as the two young men prepared to enter college, racism still impacted career opportunities for Native Americans, and the brothers went into education instead. But a generation later, Tammy fulfilled her grandfather's wish as an architect working with her tribe. Tammy's grandfather was right on the money when he predicted that tribal communities would one day need the services of an architect who understands Native American cultures. Tammy is the co-founder of Encompass Architects, p.c., a national firm headquartered in Lincoln, NE.



Matt Tipton
Why HR

Matt is a trainer and developer of business owners and leaders, and is a keynote speaker on topics ranging from Culture to the Fear behind Disciplinary Action. He has owned and operated Why HR for 5yrs, backed by an HR career that spans the last 15yrs. He also has a passion in supporting his community and continues to give back through OKC Midtown Rotary with the mantra Service Above Self. Lastly, and most importantly, he enjoys life with his wife, Brook Tipton, and you can catch them traveling whenever possible.



Mark Bacon, AIA
BVH Architecture

Mark's ability to see potential excellence in projects and people makes him a successful leader in the studio and in the architecture community. As design principal, Mark works closely with the design teams and clients to explore ideas that pursue clarity in resolution, often infused by the specificity of place, human engagement, and performance-driven solutions. During Mark's career he has worked on projects varied in scale, circumstance, and place. His commitment to the craft of architecture and dedication to elevating BVH's design practice has been repeatedly shown, most recently in his work for the Saint John Paul II Newman Center, Scooter's Coffee Corporate Headquarters and the Nature Conservancy Visitor Center. Prior to joining BVH, Mark received his post-professional masters of architecture from Kansas State University. Following graduation, he relocated to Pennsylvania to work at Bohlin Cywinski Jackson Architects. In addition, Mark has taught numerous award-winning design studios as an adjunct professor of architecture at Kansas State University, Marywood University in Scranton, PA, and, currently, at the University of Nebraska-Lincoln.

Zach Soflin
BVH Architecture

Zach is a licensed architect at BVH Architecture. With seven years of experience, he has developed a special interest in computational applied design and research. His work includes projects of various sizes, applying divergent design solutions anchored in research and data-driven analysis. Zach's desire for knowledge and collective exploration has positioned him as a thought leader within BVH, co-leading the BVH.io initiative. Zach also teaches advanced parametric modeling at the College of Architecture - UNL.



David Newton
University of Nebraska-Lincoln College of Architecture

Professor Newton is educated in the fields of architecture and computer science. This background informs a research and teaching agenda that is cross-disciplinary in nature, and enables research of issues that straddle both disciplines and might otherwise be inaccessible to the field of architecture.



Ryan Bizorek, LEED AP, CTS
ARUP

Ryan is an Associate in the Arup Acoustics, Audiovisual, and Theatre consulting team, leading the Chicago practice. He is an active contributor to the built environment, with an emphasis on integrated acoustic and audiovisual designs. His unique projects span commercial, retail/leisure, studios and performance/art spaces, in Chicago and around the world. A video studio that needed separation from a busy lobby and internal gun range; a new, world-class opera house and park; a showcase for high-quality audio equipment; or developing immersive artist recordings; Ryan works collaboratively to solve specific challenges and concerns for each project. Ryan serves as the president of the Chicago Architecture Center Auxiliary Board and as a Professional Affiliate Director for AIA Chicago. He teaches at Northwestern University.



Tom Spector, AIA
Oklahoma State University

Tom Spector is a Professor of Architecture at Oklahoma State University where he has taught management, ethics and comprehensive studio since 2001. Tom received his Ph. D. from the University of California, Berkeley, and his professional degree in architecture from Georgia Tech. He is also a life fellow at Clare Hall, Cambridge University. Tom has authored the books *The Ethical Architect* and *How Architects Write*. He has been recognized internationally for his writing on architectural ethics and is the managing editor of the journal *Architecture Philosophy*, which he co-founded. Tom is a registered architect in Oklahoma, Georgia and California and in recent years has remodeled several apartment buildings in the historic Paseo-Jefferson Park neighborhoods of Oklahoma City.





Ric. Abramson, FAIA
Workplays studio

In practice for 30 years, Ric. Abramson FAIA established Workplays studio, his small firm practice, in 2003. A graduate of Cal Poly S.L.O. (BArch) and UCLA (MArch), Ric. also studied architecture as a Fulbright scholar in Italy and a visiting artist at the American Academy in Rome. He recently completed a three-year term representing California on AIA's National Strategic Council where he led efforts to craft AIA's upcoming City Architect Initiative.

A big proponent of civic engagement, Ric. has been successful in influencing change by crafting legislation, moving small firm advocacy issues forward, developing new education programs, authoring housing policy, and advancing sustainable neighborhood efforts. Recognized for his strong ideation skills and community service, Ric. has been invited to speak at the National Alliance for Innovation and Structures for Inclusion Conferences and has presented at AIA Conventions in San Diego, Chicago, Atlanta, Philadelphia, Orlando and New York last year.



Timothy Hawk, FAIA
WSA Studios

Timothy C. Hawk, FAIA is the President of WSA Studio in Columbus, Ohio. The firm's work features urban interventions, significant interior environments, and iconic built form. Hawk's design portfolio includes corporate and institutional facilities for The McGraw-Hill Companies, L Brands, Motorists Insurance, Grange Insurance, The Ohio State University, and Ohio University. He has also been a tireless advocate for the renovation and adaptation of historic structures throughout Ohio. Hawk has been an active AIA leader on the local and national level. He was President of AIA Columbus (2009-2010) and the Chair of the AIA National Advisory Group on Interior Architecture (2006-2009). As a community leader, Hawk has served as the President of the OSU Knowlton School of Architecture Alumni Society (2010-2011), and was the founding member of the Columbus Center for Architecture and Foundation Board Member (2010-2011). He is currently serving on the AIA Board of Directors as well as a three year term as AIA Liaison.



Jame Anderson, AIA
Smith Group

Like all of us, Jame wears lots of labels: architect, artist, spouse, mom. She is currently an Architect at SmithGroup, focusing on Museums, Visitors Centers, and Interpretive Places. Jame made the transition back to private practice after working as an Architect and Exhibit Designer at the National Gallery of Art for 13 years. Jame has delivered talks about career, life, and work intersections: at Wake Forest, for the Visual Voices Series at George Mason University as well as for the Equity by Design (EQxD) Symposium and the 2017 Women's Leadership Summit of the American Institute of Architects (AIA). She has taught exhibit design, public/civic design, and museum seminars. Jame has a range of cultural institutions in her portfolio including the National Museum of the American Indian, the National Gallery of Art, the Arizona State Museum, an Interpretive and Memorial Center at the Lumpkin's Slave Jail / Devil's Half Acre Site in Richmond, Virginia as well as several other science centers, fine arts facilities, and museums. Jame holds degrees in Studio Art, Art History, and Architecture and is a total Museum nerd. She lives in the DC burbs with her spouse Neel and 12 year old fiddle playing daughter and personal hero, Clare.



Michael Ford
Smith Group

Michael Ford is a designer born and raised in the city of Detroit and now based in Madison, Wisconsin. Michael received his Master of Architecture degree from the University of Detroit Mercy (UDM), where he completed his graduate thesis titled "Hip Hop Inspired Architecture and Design." Michael is the creator of The Hip Hop Architecture Camp, an international initiative using Hip Hop Culture as a catalyst to increase the number of underrepresented communities in architecture. Michael is an internationally known keynote speaker, delivering keynotes at the 2018 Toronto Interior Design Show, 2017 AIA National Conference on Architecture, and 2016 South by Southwest (SXSW) Eco Conference. Michael's work has been featured in various media platforms including, NBC's The TODAY Show, The Oprah Winfrey Network, Architect Magazine, ESPN, and Rolling Stone Magazine. Currently, Ford is an architectural associate at SmithGroup leading the design of The Universal Hip Hop Museum.

P R E M I U M

Exhibitors

Ameristar Perimeter Security
Architectural Design Concepts
Arrowhead Precast
AVAdek Walkway Cover Systems and Canopies
Bell & McCoy Lighting and Controls
Best Companies
The Boldt Company
Burgess Building Company
CertainTeed
CMSWillowbrook Construction
Coreslab Structures
ECS Southwest, LLP
Fox Blocks
Graphisoft North America, Inc.
GreenLight 360
HP Engineering
Kirkpatrick Forest Curtis Engineering
Midwest Engineering and Testing Co.
Miller Tippens Construction
Minick Materials

M.L. Jones, LLC
Olsson
Panel Specialists
Pella Windows and Doors of Oklahoma
Performance Surfaces
Premier Lighting Sales
Rick Scott Construction
Rulon International
Scott Rice
Sierra Pacific Windows
SMPS Oklahoma
Studs Unlimited
Thermal Windows
Timberlake Construction
Triple C Lighting
TRW Oklahoma
U.S. Cad
US Stone Industries
Weather Shield Windows and Doors
Window Innovations, LLC



Avigilon USA Corporation
CLS & Associates
Manko Window Systems
Panell Associates

S P O N S O R S

Alvine Engineering
CMSWillowbrook Construction
Crossland Construction
ECS Southwest, LLP
GE Johnson Construction
IP Design Group

Manko Window Systems
The McIntosh Group
McLaughlin Brunson, A Division of Risk Strategies
Nabholz Construction
Professional Engineering Consultants
Robert C. Zahl, PE, PLLC
SGA Design Group
Tulsa Foundation for Architecture
Wallace Engineering
Waystone, LLC
ZFI Engineering

Thank you to our 2019 AIA Oklahoma Conference on Architecture Supporters!

AMERISTAR
ASSA ABLOY



avigilon
a Motorola Solutions Company

AVAdtek
Walkway Cover Systems & Canopies



BOLDT



CROSSLAND
CONSTRUCTION COMPANY, INC.

CertainTeed
SAINT-GOBAIN



GRAPHISOFT
ARCHICAD

GreenLight
360

GEJOHNSON
CONSTRUCTION COMPANY



olsson



WEATHER SHIELD.
WINDOWS & DOORS





REGISTER BY MAIL

NAME: _____

COMPANY: _____

ADDRESS: _____

CITY /STATE /
ZIP _____

PHONE: _____

EMAIL: _____

Full Conference

___ AIA Member (Licensed Architect) \$175.00 (\$200 at the door) AIA# _____

___ Associate AIA Member (Intern Architect) \$100.00 (\$125 at the door) AIA# _____

___ Nonmember Architects / Intern Architects \$225.00 (\$250 at the door)

___ Industry Representative (non-architects) \$425.00 (\$450 at the door)

1 Day

___ AIA Member (Licensed Architect) \$100.00 (\$125 at the door) AIA# _____

___ Associate AIA Member (Intern Architect) \$60.00 (\$85 at the door) AIA# _____

___ Nonmember Architects / Intern Architects \$130 (\$155 at the door)

___ Industry Representative (non-architects) \$250 (275 at the door)

___ Architecture Student Rate \$25.00

Lunch Passes

___ Thursday Lunch Pass \$25.00 (for guests not attending the conference)

___ Friday Lunch Pass \$25.00 (for guests not attending the conference)

Special Events:

___ Gathering Place Tour \$20.00 (limited tickets available) ___ Thursday ___ Friday

___ Other Tour (waiting on name) \$20.00 (limited tickets available) ___ Thursday ___ Friday

___ Thursday Evening Reception (Free for conference attendees)

___ Thursday Evening Reception Guest of Attendee Pass \$50.00

_____ **TOTAL DUE**

Checks Payable & Mail to: AIA Oklahoma, P. O. Box 2312, Oklahoma City, OK 73101.

HOTEL: Osage Casino & Hotel (\$84 plus tax per night) 1-877-246-8777 Code: AIA2019

