



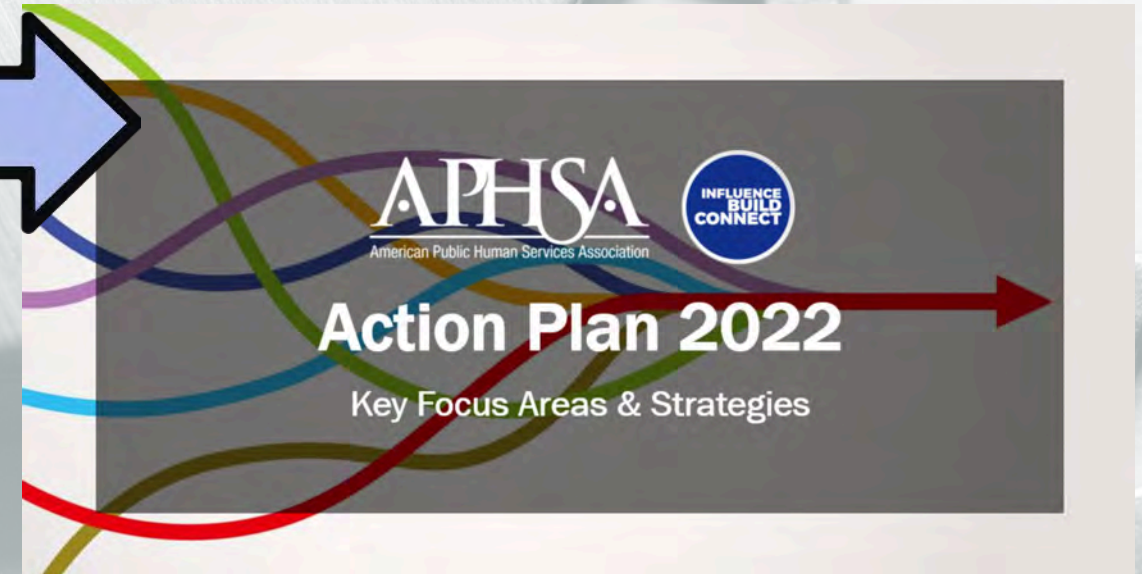
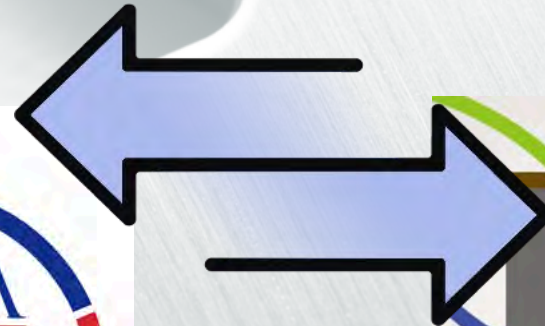
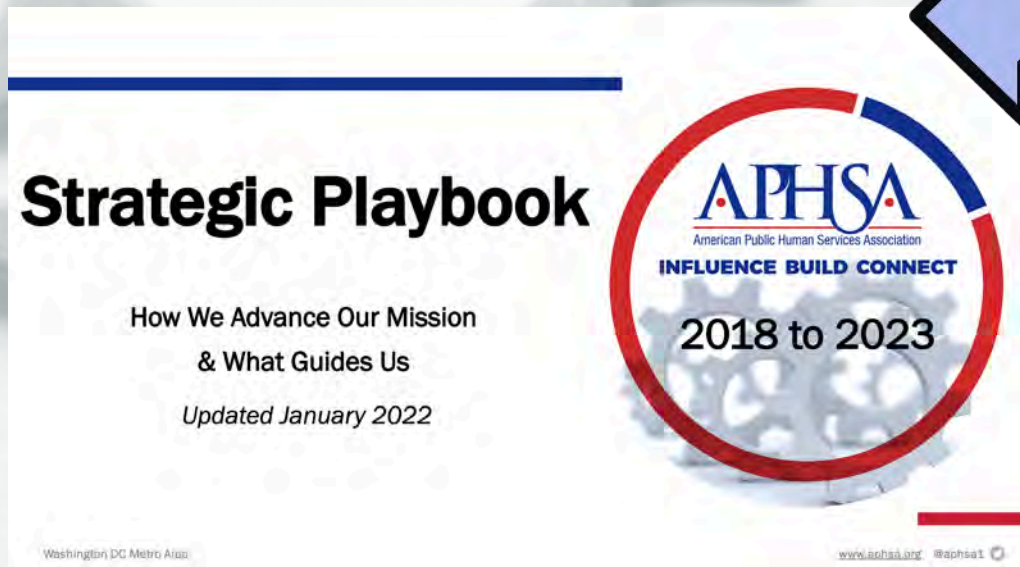
American Public Human Services Association



# Action Plan 2022

## Key Focus Areas & Strategies

# Our Action Plan is Grounded in Our Playbook and Furtheres Our Call to Advance Race Equity





# Collective Principles that Define Us – We Are *A/ways* Committed to...



**People and Public  
Service**



**Building Common  
Ground**



**Partnering Across  
Sectors**

# Three Catalyzing Focus Areas



## **Moving Health & Human Services Upstream**

Preventing Issues  
Before They Happen



## **Advancing Social & Economic Mobility**

Ensuring Families Succeed  
for the Long Term

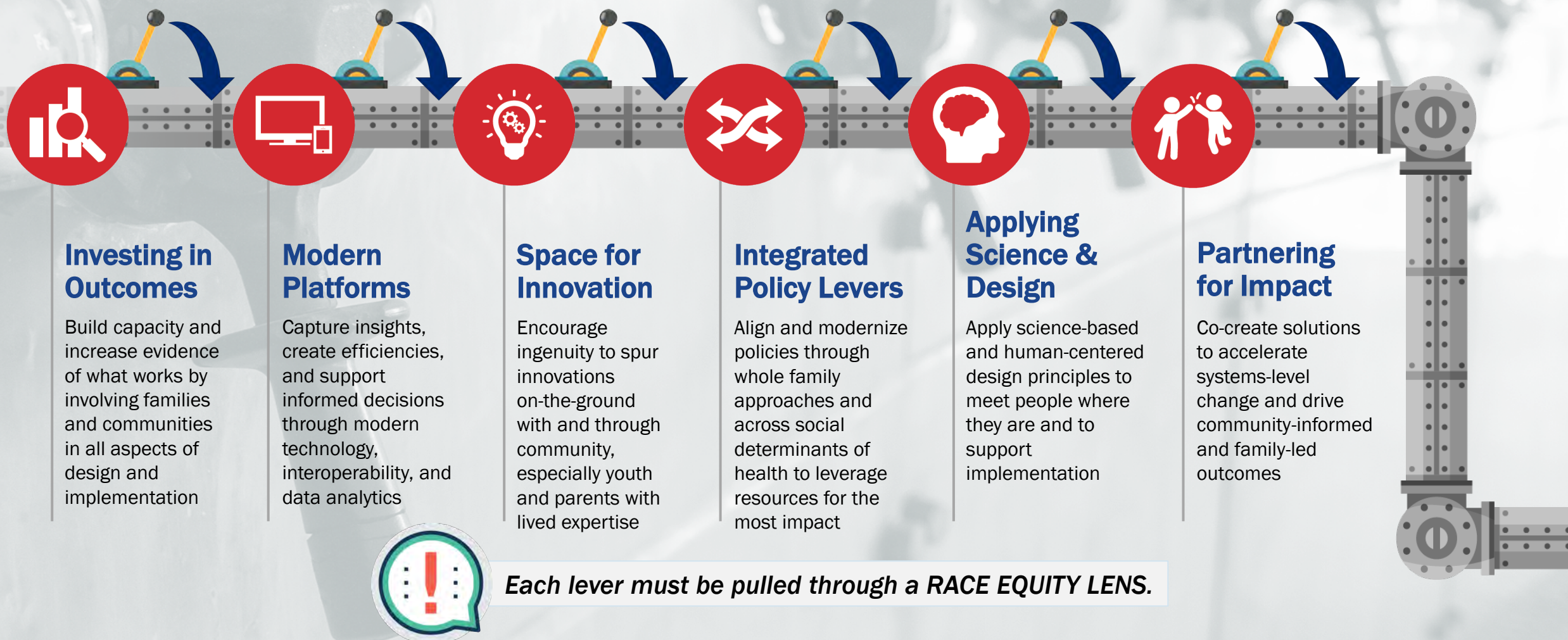


## **Building Field Capacity**

Providing Insights and  
Tools that Move Us Forward



# Pulling Key Levers



# Cornerstone Our Policy Framework

*First papers released November 2020*

- Scaffolding for why human services matters
- Position human services leaders in our network to support policy action for the Federal Administration & Congress
- Address specific action required in ongoing response to the COVID-19 pandemic
- Lay groundwork for equitable recovery and long-term repair





# Cornerstone Policy Briefs – 2021 Releases



## ***Core Principles for TANF Modernization*** (April 2021)

Highlights how we can build common ground on what families need to thrive and how TANF can align with other key building blocks to achieve the outcomes we desire. Check out our [TANF Map of Core Principles](#) too!

## ***Harnessing Data & Technology to Construct a Human Services System that Supports Thriving & Equitable Communities*** (August 2021)

Highlights how recent innovations in technology have opened a path for agencies to dramatically strengthen their data and technology infrastructure, while providing fairer and more equal access to crucial benefits and services.

## ***Unlocking the “Prevention Services” in the Family First Prevention Services Act*** (December 2021)

Highlights the challenges and opportunities that the Family First Prevention Services Act offers to accelerate the shift towards a prevention-oriented child well-being system.



## Moving Health & Human Services Upstream

### Preventing Issues Before They Happen



Apply a Race Equity Lens

- **Focus on Primary Prevention & Early Intervention**
- **Align Systems to Advance Child & Family Well-being**

### Enabling Factors

- Concrete and economic supports
- Quality early childhood supports
- Food & housing security
- Behavioral health supports
- Access to support systems that reduce stress
- Alternate pathways in response to risk of child maltreatment
- Continuum of care that supports all families

### Key Drivers & Actionable Areas

- American Rescue Plan Act implementation
- Sustaining structural improvements achieved through pandemic response
- IV-B reauthorization
- Family First implementation
- Farm Bill reauthorization
- TA and cohort learning that fosters policy, practice and system alignment





## Advancing Social & Economic Mobility

### Ensuring Families Succeed for the Long Term



Apply a Race  
Equity Lens

- **Focus on Whole Family Approaches**
- **Tackling Benefits Cliffs**

#### Enabling Factors

- Education & skill development
- Employment & training services
- Partnerships to foster pathways for upward mobility
- Financial asset & credit-building
- Food & housing security
- Quality early childhood supports
- Broadband & transportation access
- Baseline of supports that meet people's basic needs

#### Key Drivers & Actionable Areas

- TANF modernization
- American Rescue Plan Act implementation
- Sustaining structural improvements achieved through pandemic response
- Workforce, education & human services alignment
- Overcoming barriers to scale SNAP Employment & Training (E&T)
- Earned income & child tax credits
- TA and cohort learning that fosters policy, practice and system alignment





## Building Field Capacity

### Providing Insights and Tools that Move Us Forward



Apply a Race  
Equity Lens

#### Workforce Well-being

- TA support in the field
- Cross-collaboration with community-based orgs
- Leadership toolkit

#### Data Insights and Interoperability

- Applying advanced analytics through a race equity lens
- Inform policy opportunities for advancing interoperability

#### Culture of Evidence & Equity

- TA support in the field
- Spotlight on importance of qualitative data
- E-learning module & resource development

#### Generative Leadership

- Cross-sector shared learning opportunities
- Building agency capacity to drive systems level change informed by people with lived expertise
- EDI Peer Community

#### Productive Narrative

- Additional *Cornerstone* briefs
- Additional tools for field use informed by people with lived expertise
- EDI/Race equity tools

#### Crisis, Disaster Planning, & Response

- Embedding sustainable changes from pandemic lessons
- Refugee repatriation and resettlement
- Understanding intersection of HHS & environmental justice



# Join Us: Events & Conferences 2022

**TBA**

*SNAP/TANF  
PROGRAM  
INTEGRITY*



## Economic Mobility and Well-Being Conference

[www.EMWBconference.com](http://www.EMWBconference.com)

**OCTOBER  
16-19**

*ORGANIZATIONAL  
EFFECTIVENESS*



## NSDTA Education Conference

[www.NSDTAconference.com](http://www.NSDTAconference.com)

**JUNE  
12-15**

*POLICY AND  
PRACTICE*



**NATIONAL HEALTH &  
HUMAN SERVICES  
2022 SUMMIT**

## National Health and Human Services Summit

[www.APHSANationalSummit.com](http://www.APHSANationalSummit.com)

**OCTOBER  
23-26**

*TECHNOLOGY*



## ISM Annual Conference and Expo

[www.ISMconference.com](http://www.ISMconference.com)

**OCTOBER  
9-12**

*LEGAL*



## AAHSA Education Conference

[www.AAHSAconference.com](http://www.AAHSAconference.com)

**ONGOING  
VIRTUAL  
SERIES!**



**LEADERSHIP  
CORNER**

*Conversations to Spark Inspiration and Innovation*

[www.APHSALeadershipCorner.com](http://www.APHSALeadershipCorner.com)

# What We Aim to Impact

## A Healthier, Equitable Ecosystem

Creating thriving communities by understanding the enabling conditions for social and economic mobility and family well-being.



## Productive National Narrative

Promoting productive narratives that facilitate finding common ground and advancing solutions that are locally-adaptable and centered on the whole family.



## Agile H/HS Workforce

Focused on the critical role of the workforce and enhancing the well-being and overall capacity of workers at all levels to deliver on the agency's mission.



## Modern H/HS Policy

Advancing policy at federal, state, and local levels that is human-centered; rooted in the context of what it takes to be healthy and well in a community; and focuses on achieving social and economic mobility across generations.



## Data Optimization at All Levels

Integrating and leveraging data while building the analytical capacity of health and human service agencies to inform sound policy and practice.



## Evidence-Informed Investments

Supporting a culture of evidence in health and human service organizations and generating opportunities for building and spreading services that have been shown to work.



**Family & Community**