



Cherokee Rose

COLLECTION

Allow us to introduce our new Cherokee Rose Collection! These homes are designed, priced, and ready to build with approved plans available now.

One of the biggest challenges we face as a successful modular home manufacturer is a long production backlog. Add the time and expense of getting plans through the submittal process, and it becomes an obstacle for many people that are “ready to buy” now.

The Benefits

Save Money: Engineering fees are included, saving you **\$3,000-\$3,750** depending on the plan.

Save Time: Engineering is already completed, saving you time. This allows you immediate access to your permitting process.

The home can be placed on the production schedule as soon as your deposit and contract are received.

You will have the benefit of streamlined pricing, geared towards volume rather than customization.

What's the Difference?

The plans come as they are designed. Several popular options have been built into the design, but other than those, there are no structural changes allowed.

Plans are available for Florida, Alabama, Mississippi, and Georgia. *(Not available in HVHZ zones)*

What if I want to make structural changes?

No problem! We are happy to do this for you. The home will be re-priced as a standard home and will go through the submittal process with the appropriate fee.

Pre-Approved and Ready to Build!

The Cherokee Rose collection of homes are the perfect fit for those who are ready to build ASAP. They cut out engineering costs and the submittal process, so they are ready to be placed on our production schedule. With a diverse line of quaint floor plans, there's an option for everyone!

These are simple homes that are ready to go! Contact us to learn more!



Cherokee Rose

COLLECTION



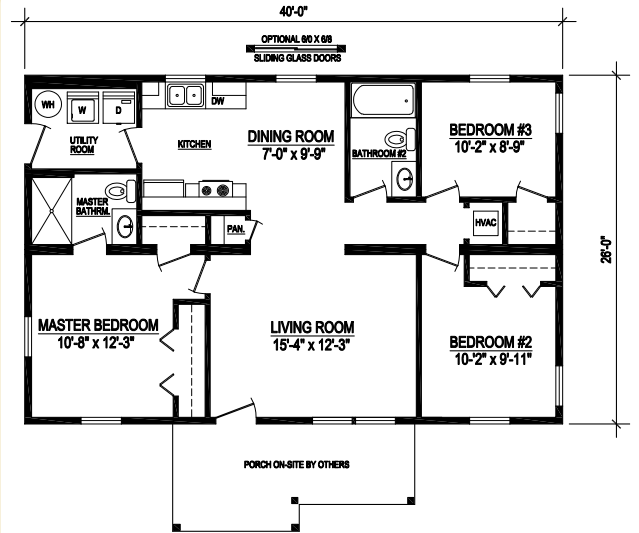
The Cherokee Rose

Florida, Alabama, Mississippi, & Georgia

- 5/12 hinged roof

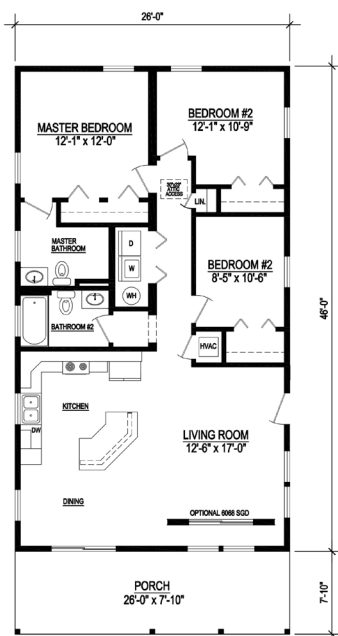
Florida, Alabama, & Mississippi

- Fixed 3.25 or 2.25/12 pitch.



CHEROKEE ROSE

1040 Sq. Ft. Heated/Cooled
1040 Sq. Ft. Under Roof



AZALEA

1196 Sq. Ft. Heated/Cooled
1400 Sq. Ft. Under Roof



The Azalea

Florida, Alabama, Mississippi, & Georgia

- 5/12 hinged roof

Florida, Alabama, & Mississippi

- Fixed 3.25 or 2.25/12 pitch.

Cherokee Rose

COLLECTION



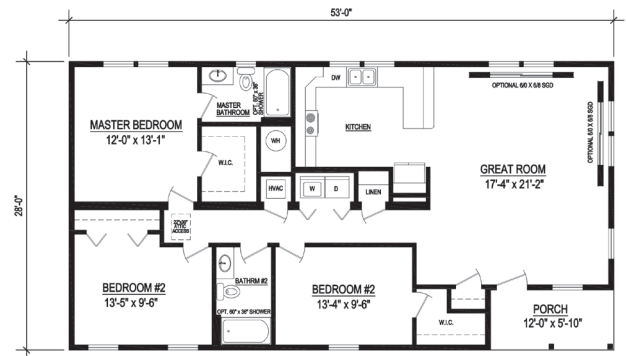
The Peach Blossom

Florida, Alabama, Mississippi, & Georgia

- 5/12 hinged roof

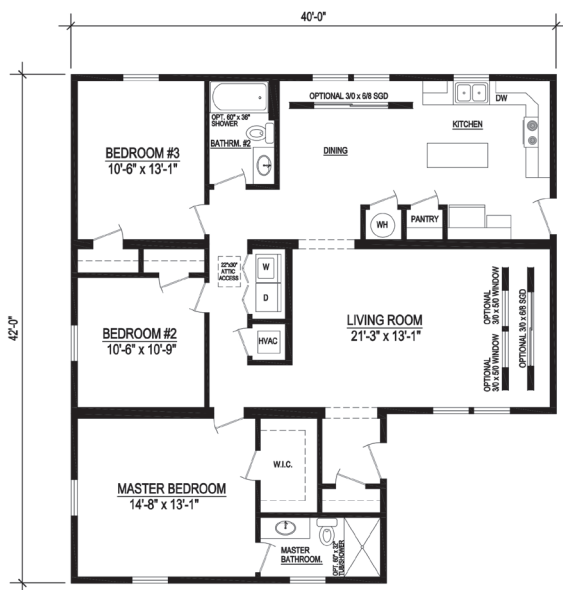
Florida, Alabama, & Mississippi

- Fixed 3.25 or 2.25/12 pitch.



PEACH BLOSSOM

1414 Sq. Ft. Heated/Cooled
1484 Sq. Ft. Under Roof



DOGWOOD

1484 Sq. Ft. Heated/Cooled
1484 Under Roof



The Dogwood

Florida, Alabama, Mississippi, & Georgia

- 5/12 hinged roof

Florida, Alabama, & Mississippi

- Fixed 3.25 or 2.25/12 pitch.

Cherokee Rose

COLLECTION



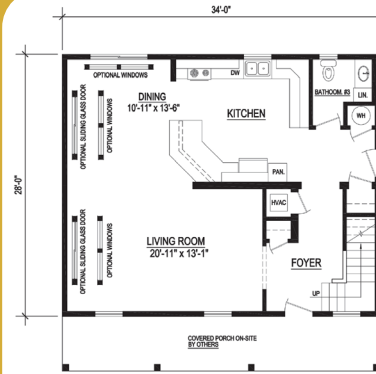
The Camellia

Florida, Alabama, Mississippi, & Georgia

- 5/12 hinged roof

Florida, Alabama, & Mississippi

- Fixed 3.25 or 2.25/12 pitch.



1st LEVEL



2nd LEVEL

CAMELLIA

1904 Sq. Ft. Heated/Cooled
1904 Sq. Ft. Under Roof

Cherokee Rose Collection

Standard Specifications

Exterior Construction

- Vinyl single hung windows
- Vinyl siding, trim & soffit
- Aluminum fascia
- 30 year Architectural shingles
- 8' wall height
- 5/12 roof (140mph) 3/12 (180mph)
- 6 panel steel exterior door
- 2x6 exterior Walls,
- Trusses 24" O.C. (140 mph)
- Trusses 16" O.C. (180 mph)
- Insulation R-19 Floor, R-19 walls, R-30 roof

Interior

- Smooth finished drywall throughout
- Smooth finished ceiling
- Colonial trim throughout
- Painted primer walls throughout
- Wired & plumbed for washer/dryer
- Dryer box
- Brushed nickel lighting & faucet package
- Lever style door handles

Kitchen

- Double Bowl 8" deep stainless steel kitchen sink
- Hi-neck faucet with sprayer

Cabinet & Countertops

- Forevermark cabinets
- 36" wall cabinets with crown molding
- Laminate top, rolled edge, seamless backsplash

Electric

- 1 data jack
- Exterior GFI receptacle
- 200 AMP service
- 50 gallon water heater

Bath

- Full size shower or tub/shower
- Single lever faucet
- Elongated comfort height toilet
- Vanity with laminate top and china sink

HVAC

- Rheem air handler with 10 KW heat strip and condenser

ENGINEERING

- Pre-approved plans for faster permitting time



62 Murray Blvd.
PO Box 186
Lakeland, GA 31635

P: 229-482-1200
GEORGIA

