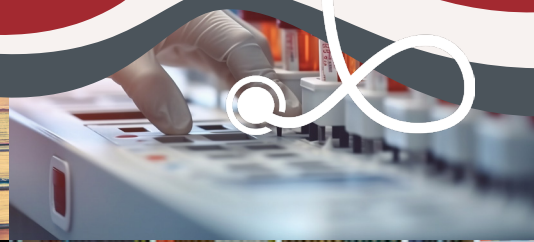


WyHealthTrain grant program



Newly enrolled students in a healthcare career pathway *may be eligible* for up to \$10,000 toward the cost of completing a qualified healthcare program within a 2-year timeframe. Preference will be given to those enrolled in a Nursing Pathway or Behavioral Health Pathway; however, other healthcare career pathways are also eligible.

ELIGIBILITY

WyHealthTrain Grants may be available to Wyoming residents who are:

- Newly enrolled for the upcoming semester in eligible healthcare-related academic programs provided by a Wyoming Community College or the University of Wyoming **and who also meet one or both of the following criteria:**
 - Became unemployed or underemployed during or as a result of the pandemic (March 13, 2020 – May 11, 2023).
 - Household income is at or below 300% of the federal poverty guidelines.

2024 Annual Federal Poverty Levels (FPLs)			
Household / Family size	250%	300%	350%
1	\$37,650	\$45,180	\$52,710
2	\$51,100	\$61,320	\$71,540
3	\$64,550	\$77,460	\$90,370
4	\$78,000	\$93,600	\$109,200
5	\$91,450	\$109,740	\$128,030
6	\$104,900	\$125,880	\$146,860
7	\$118,350	\$142,020	\$165,690
8	\$131,800	\$158,160	\$184,520

**BUSINESS
TRAINING &
SUPPORT UNIT**

dws-wyhealthtrain@wyo.gov / 307-777-5327 / dws.wyo.gov/WyHealthTrain



SCAN ME