



# Japan Evangelical Lutheran Church (JELC)

## Congregations in Kumamoto

Rev. Hitoshi and Satoko Adachi

### ELCA Missionary and Associate

## THANK YOU From KUMAMOTO during RAINY SEASON

The Christian Community has entered the long Season after Pentecost. In Kumamoto, they have also entered a long rainy season. It usually starts in early June, however, this year, it started on May 15th, during the season of Easter. Even so, the amount of rainfall so far has not been bad and it hasn't been as humid as it normally would be.



Meanwhile, at Matsubase Church, one of three congregations Hitoshi and Satoko serve, since the number of worship attendees are still relatively small in a very blessed large chapel, due to COVID-19 precautions, two Holy

Communion Services were held during the Easter season and since June, they have decided to have communion services twice a month. After a bit over a year without in-person Holy Communion, the sanctuary was full of the Lord's grace and people's gratitude about worshipping together was difficult to put into words.

While receiving the meaningful grace of the Lord, Hitoshi and Satoko would like to express their sincere gratitude to congregations and individuals of the ELCA, who continually support the various ministries in Kumamoto and allow them to thrive.



(Pictures show individually wrapped wafer and grape juice that started being used for communion.)

## STATUS of VACCINATIONS in KUMAMOTO

It seems that the vaccination timetable in Kumamoto City has been sped up and in the Jiaien senior care homes, the social services center, where Hitoshi serves as a chaplain, most of the residents were vaccinated in May and June. There are many worshipers from the senior care homes and last week, one old lady came and said, "I completed two vaccinations by now without pain or any other side effects" and she said with a big smile, "I could go shopping at Tsuruya" which is a famous department store in downtown Kumamoto.

By the way, the vaccination vouchers were delivered to Hitoshi and Satoko by the end of June, and the first vaccination reservations were made, for them, in mid-July. This schedule is about one and a half months quicker than they had originally estimated several months ago. They are thankful that the staff of Kumamoto City Hall has been diligently working, but at the same time there are still many people (about 40%) in Japan who think it is better to remain unvaccinated.

There are both fears about receiving and not receiving the vaccine, however, Hitoshi believes both sides should fear the Almighty God most and not complain or blame each other, but instead listen to each other.

(Pictures show English version of vouchers that Hitoshi received and Japanese version vouchers for Satoko.)

Information for Kumamoto Residents Receiving the COVID-19 Vaccine

Vaccine vouchers are being sent to eligible recipients in stages by age group. Depending on your age, you may receive your voucher later than others. Please refer to the enclosed "COVID-19 Vaccination Procedure" document for more information.

**Important**

Enclosed you will find your **COVID-19 vaccine voucher**. Please open and confirm.

We are expecting phone lines to be busy for several days after reservation begins. Those able to book an appointment online are encouraged to do so. Please help those who don't know how to make a reservation on line.

**Easy online booking, any time!**

For vaccine inquiries: Kumamoto City COVID-19 Vaccination Call Center  
☎: 0120-096-885  
☎: 096-300-5577 (weekdays 9:00-18:00, weekends & holidays 9:00-17:00)

Services available in English, Spanish, Vietnamese, and Tagalog.

**熊本市**  
Kumamoto City

新型コロナウイルスワクチン接種券(クーポン券)が入っていますので必ず中身をご確認ください。

予約開始日は電話で確認し、予約専用フリーダイヤルの登録・予約が完了されます。インターネットでの予約はできません。インターネット予約は、予約専用フリーダイヤルに電話して予約してください。

ご予約は、いつでもスムーズに予約ができるインターネット予約で!

新型コロナウイルスワクチン接種券予約専用WEBサイト  
https://vaccines.scisec.jp/kumamoto/covid19

熊本市のワクチン予約専用フリーダイヤル  
☎: 0120-096-885  
☎: 096-300-5577 (平日9:00-18:00、土日祝9:00-17:00)

熊本市のワクチン予約専用フリーダイヤル  
☎: 0120-096-885  
☎: 096-300-5577 (平日9:00-18:00、土日祝9:00-17:00)

熊本市

## "STILL LIVE NOW"

- Hitoshi's Reflection

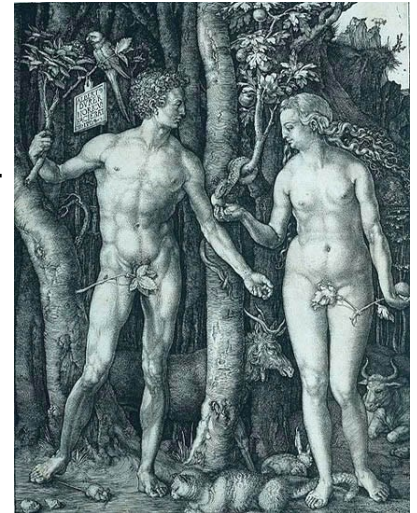
In Japan, especially in Tokyo, there are signs of a fifth wave of Covid-19 infection. However, the Olympic and Paralympic Games are still scheduled as planned (one year postponed though). While some students are struggling to buy sanitary napkins, you can hear spectacular reports of athletes planning to participate in the Olympic Games. Hitoshi feels something conflicted. Fundamentally, sporting events are entertaining, but one's health is most important.



"In the beginning, God created the heavens and the earth." Fundamentally, God created the heavens and the earth, and by the will of God, humans are also created. The first created humans, Adam and Eve, ate the fruits of the tree of good and evil. Despite God's warning not to eat from that specific tree. Then they became embarrassed because they realized that they were and vulnerable naked. And they covered their waists with fig leaves.

This situation also overlaps with the current state of humanity. Looking back, at the 20th century, humans pursued various desires, saying "We want more." There have been atomic bombs, nuclear accidents, excessive CO2 emissions, etc. It seems that they have eaten more of that fruit and are now becoming aware of their vulnerabilities.

The 1964 Tokyo Olympics was a smaller tournament than it is now. It was a competition for amateur athletes. The number of games/sports has steadily increased and professional sports/athletes have also been added. "More aspects have been added." The Olympic Games now costs a lot of money to host. There are also criticisms that the Olympic has become a celebration of corrupted big business rather than a celebration of sports and unity. It seems that the Olympics are progressing while the shameful parts of the Olympics are hidden by fig leaves.



But humans are surprised by the Lord. Please remember the verse, Genesis 3:21:

"And the Lord God made garments of skins for the man and for his wife, and clothed them."

Instead of the "fig leaf", God made and put "garments of skins" on humans. What does this mean? God shows humanity mercy even when we keep making mistakes.

No matter how contradictory the reality is, God's love is poured onto humanity. In the love of God, who is omnipotent, things are guided towards good in Jesus Christ. We, humans, are guided and encouraged to live now with hope, joy, and kindness in Christ and towards each other. Amen.

### ELCA Global Mission Support & Contact Information

You can give through your synod office or mail your check to Evangelical Lutheran Church in America, Gift Processing Center, P.O. Box 1809, Merrifield, VA 22116-8009. Make checks payable to "ELCA Missionaries" with "(Hitoshi and Satoko) Adachi GCS2051" in the memo line.

By credit or debit card, see <https://community.elca.org/Japan> or call 800-638-3522 and specify "(Hitoshi and Satoko) Adachi GCS2051". By automatic monthly bank withdrawal, or to establish a covenant of prayer, communication and support: Contact 800-638-3522, ext. 2657, or [globalchurch@elca.org](mailto:globalchurch@elca.org).