



# The Long Island Regional Partnership Center and Family and Community Engagement (FACE) Centers

Center for Community Inclusion  
Long Island University

## Understanding the Individualized Education Program (IEP) for Families of School-Age Students with Disabilities: Let's Dive in Together!

Each session will dive deeper into  
different sections of the IEP!

11:00am to 12:00pm  
July 11, 13, 18, 20, 25, 27  
August 1, 3, 8, 10  
&

11:00 to 12:30pm  
August 15\*

\*Our series will culminate in a condensed  
version of Student-Directed IEPs for Families!



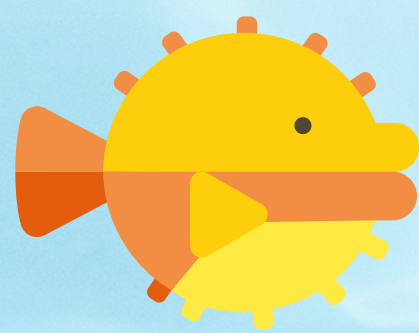
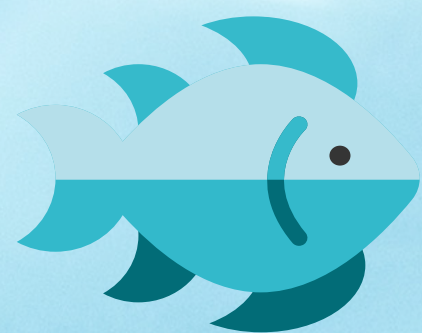
Would you like to better understand how to read your child's IEP? The purpose of this workshop is to gain a foundational understanding of the IEP development process. We will go through every line on the IEP and explain what it means and how you can contribute.

Participants will:

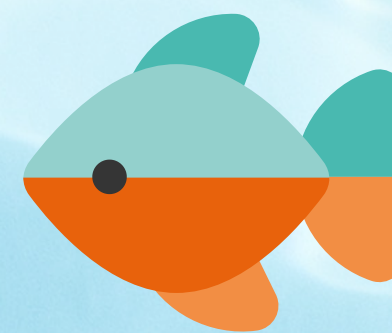
- Learn about the Committee on Special Education (CSE) process and the parent/guardian role in IEP development
- Identify the different components of the IEP
- Discuss how to develop relationships and practices that build home-school collaboration that will support your child
- Participate in the transition planning process for students beginning the year they turn 15
- Discuss how your child can participate and contribute to the process in the development of their post-secondary goals
- \*Identify ways to meaningfully engage and promote their child's participation in IEP development and CSE meetings



[Click Here to Register](#)



New York State Education Department  
Office of Special Education  
**Educational Partnership**



We are here for you!

[post-cci@liu.edu](mailto:post-cci@liu.edu)

[SIGN UP FOR OUR MAILING LIST](#)

We are a CTLE approved sponsor.

