

20-584
HANOVER
PRESTON
HOLLOW

Weekly Site Photos
Week Ending
5/19/2023



LEVEL 4 POUR 1

Concrete placed 5/15.

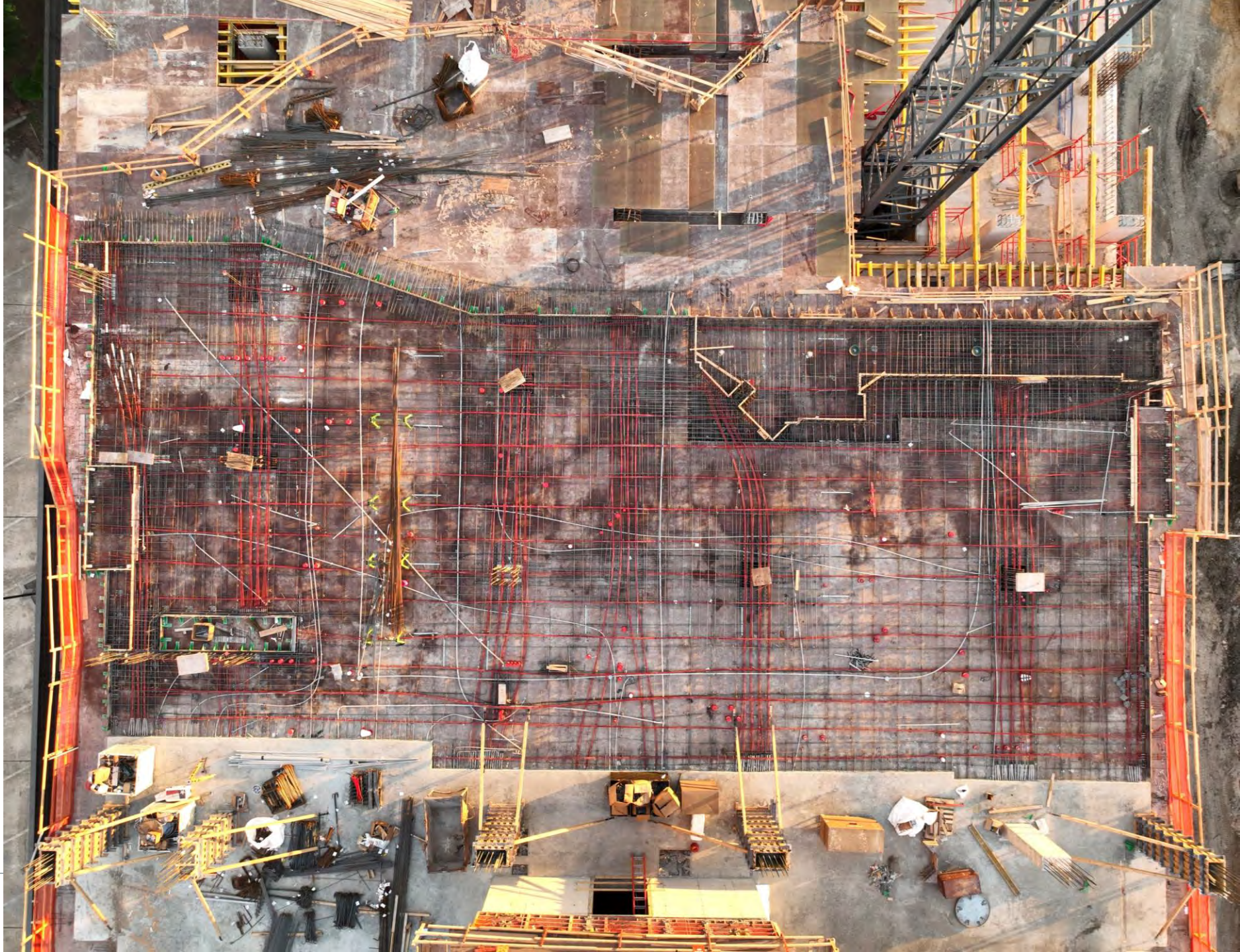
20-584 Hanover Preston Hollow
Weekly Site Photos
Week Ending
5/19/2023



LEVEL 4 POUR 2

PT, Reinforcement, and MEP rough-in nearing completion.

20-584 Hanover Preston Hollow
Weekly Site Photos
Week Ending
5/19/2023



LEVEL 4 POUR 3

*Scaffolding and decking continued
North towards pour 4.*

20-584 Hanover Preston Hollow
Weekly Site Photos
Week Ending
5/19/2023



LEVEL 4

Main core shear walls placed on level 4 and core climber jumped to level 5. Decking tables for tower section arrived.

20-584 Hanover Preston Hollow
Weekly Site Photos
Week Ending
5/19/2023



LEVEL B1

*Concrete punch work & installation
of overhead plumbing pipe ongoing.*



20-584 Hanover Preston Hollow
Weekly Site Photos
Week Ending
5/19/2023



WEST END

*Private water and fire lines placed on
West end of site.*

20-584 Hanover Preston Hollow
Weekly Site Photos
Week Ending
5/19/2023



SITE OVERVIEW

Facing Northwest.

20-584 Hanover Preston Hollow
Weekly Site Photos
Week Ending
5/19/2023



HANOVER