

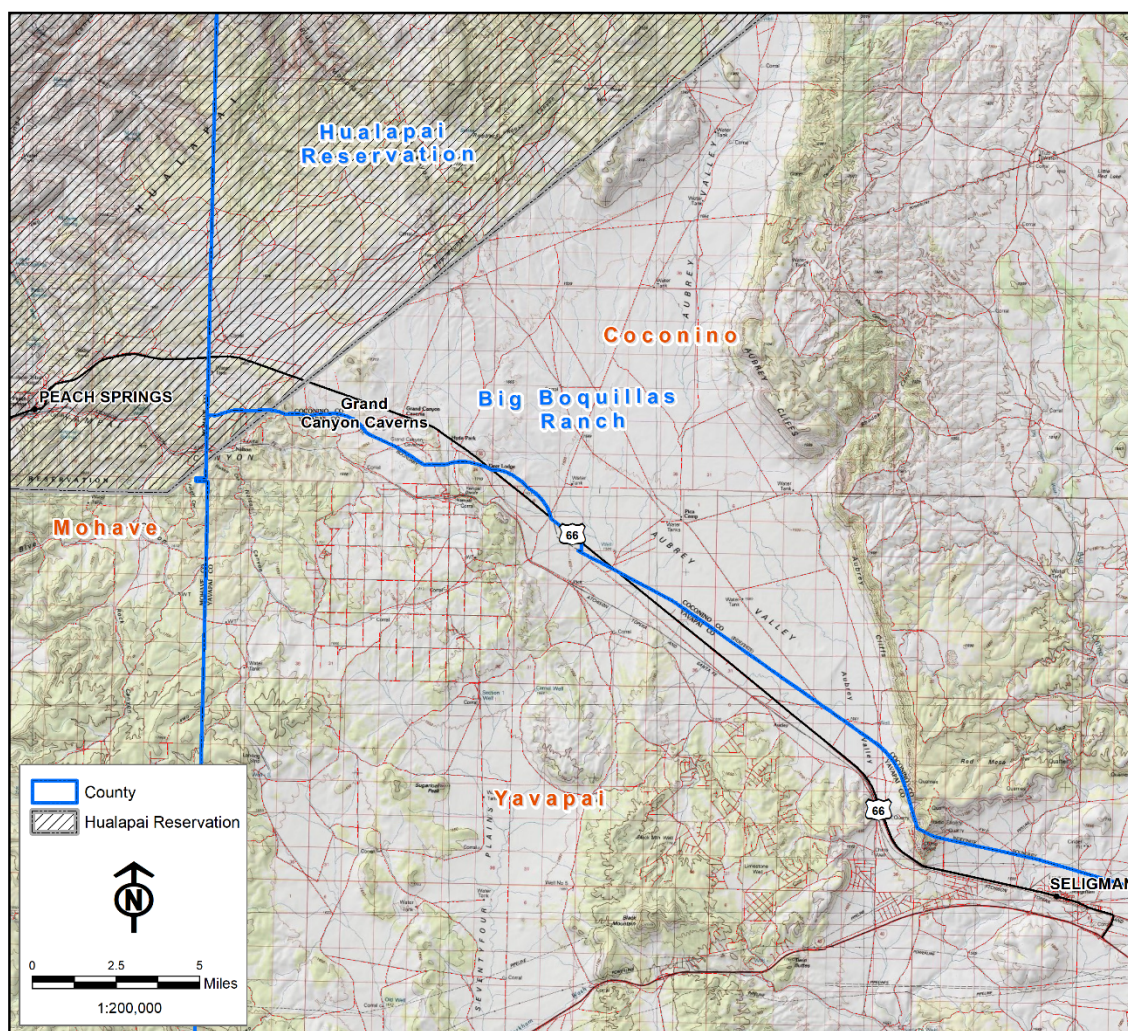
21-23 February—Aubrey Valley & Hualapai Reservation (Coconino, Mohave & Yavapai Counties)

Leaders: Joe Crouse & Felipe Guerrero

Contact: jcrouse.gis@gmail.com, fplguerrero@gmail.com

Overview:

The Aubrey Valley and the eastern edge of the Hualapai Reservation are located approximately 20 miles west of Seligman along Route 66. The dominant vegetation types are plains and semi-desert grasslands, pinyon-juniper savanna and woodland with patches of sagebrush shrubland. Access is limited due to much of the area being on private Big Boquillas Ranch and on the Hualapai Indian Reservation. The Big Boquillas Ranch is over 500,000 acres of private land and 250,000 acres of State Trust land. This restricted access has limited the amount of birding that has been done in this region. The goal of this expedition will be to concentrate on the grasslands in hopes of locating uncommon or otherwise under-documented birds such as Grasshopper and Sagebrush Sparrows, McCown's and Lapland Longspurs, and other rare migrants/winter residents such as Sprague's Pipit, Northern Shrike, and Rough-Legged Hawk. There is the



opportunity to bird in three different counties as Coconino, Mohave and Yavapai converge in the survey area.

Itinerary:

We will plan to meet on the afternoon of Friday, February 21 and depart the area mid-day on Sunday, February 23. The itinerary will be finalized once the team roster is finalized, but target areas will include:

- The extensive grasslands of the Big Boquillas Ranch.
- The grasslands on the Hualapai Reservation adjacent to the Big Boquillas Ranch.
- Higher elevation ponderosa pine habitat on the Hualapai Reservation.
- Pinyon-juniper woodlands and savannas south of Route 66, on the Reservation and the Ranch.
- Roads into both of these areas are generally good and passable to high clearance vehicles. The roads can become nearly impassible during periods of wet weather so we'll have to be flexible.

****Registered participants will be instructed on meeting time, place, and directions for the afternoon of Friday, February 21.

Things to Know/Bring:

- Access throughout the area consists of a mix of paved roads; well-maintained, graded dirt road; and rougher, unmaintained dirt roads. High-clearance, AWD or 4WD vehicles are recommended for the rougher roads. We will organize carpools for access to areas requiring high-clearance vehicles. It is possible to access a fair bit of the area without a high-clearance vehicle, and this type of vehicle is not required for participation.
- The nearest gas stations are in Peach Springs and Seligman. Participants should be fine on gas for the weekend if they fuel up at the beginning of the trip.
- Hotels are available in Seligman, Grand Canyon Caverns and Peach Springs. Grand Canyon Caverns also has a campground. There is BLM land south of Route 66 where dispersed camping is allowed.
- "Leave No Trace" ethics are expected of participants, so extra toilet paper and a small camp shovel are recommended. There are no bathrooms in the survey area.
- Please bring binoculars and cameras, with extra batteries! If anyone has a scope, it will come in extra handy for viewing the grasslands.
- You will be responsible for your own food and water on the trip. A gallon of water per person, per day is recommended.
- Daytime temperatures can be in the 50s-60s and nighttime temperatures in the 20s-30s. Rain and/or snow are possible. Therefore, it is recommended that you bring layers, including rain gear, so that you're prepared for any type of weather.
- A wide-brimmed hat and sunblock are also recommended.

Carpooling, Meeting Time/Location:

Upon registering via email with the expedition leader, details on meeting time and place will be arranged. Carpooling possibilities can be arranged among registered participants.