



Monthly Emergency Management Training February 2023



Active Shooter Training Update & Exit Routes

Where are we at with our active shooter training?

Between November 1, 2022 and February 15, 2023, we held 67 one-hour long tabletop sessions attended by 615 staff members. Participation included 55 sessions at Vista East, 4 sessions at the Lindenhurst Vista Ambulatory Care Center, 1 session at the Vista Imaging Center and a session at each of the 8 Vista Physician Group Offices.

What's next in our active shooter preparedness training?

Now that the majority of our staff have completed their active shooter awareness training on the Learning Center and participated in the tabletop sessions, we will be looking at conducting a full scale scenario at Vista East. This portion of the training will take some time to coordinate and will include our external partners including Waukegan Police Department, Waukegan Fire Department and the Lake County Emergency Management Agency. The goal is to hold the training in mid-summer or early fall.

What have we learned from the tabletop sessions?

- We should be prepared to respond appropriately to an active shooter event not only at work but while at the grocery store, park, movie theater, concert, etc. since active shooter incidents occur at a variety of locations.
- Your response is a personal choice influenced by moral, ethical, religious, professional and other views.
- There is no single answer for what to do, but a survival mindset increase the odds of survival.
- How to contact security:
 - o Vista East Security can be contacted directly by calling ext. 4508. When you dial ext. 4508, you are calling the ASCOM carried by the Lead Security Officer working. For staff that carry an ASCOM, if you press and hold "9" it will also call ext. 4508. Dialing ext. 5026 from Vista East calls the Security Office in the ER Lobby. Always an option is dialing "0" and requesting Security to your location.
 - o Lindenhurst VACC needs to call 911 for assistance during first shift. On second and third shift, Security can be reached by calling 356-4705 or ASCOM ext.4450.
 - o The VPG's and VIC should be calling 911 when they need assistance.
- Staff should also be familiar with all the exits and stairwells that lead directly outside from their work areas or any area they visit or walk through regularly. We should be aware of our options to get out of the building quickly before the need. The graphic below shows the staircases that exit directly to the outside at Vista East. At the VACC, VIC and VPG's, your options are less and should be familiar to you.
- Pre-planning a response should occur regularly during staff meetings. Where are the closest exits?, What is your escape route?, Where will you go once outside? Will you have a meeting place for your staff outside the facility and away from danger?, Where are the best places to hide?, What makeshift weapons are easily accessible by staff to use? How will we make sure everyone is safe?

- | | | |
|---|--|---|
| <ul style="list-style-type: none"> - RUN when it's safe to do so..... <ul style="list-style-type: none"> • Leave your belongings behind • Evacuate whether or not others agree to follow • Help others escape, if possible, without placing yourself in harm's way • Do not attempt to remove the injured • Prevent others from entering the area • Call 911 when you are safe | <ul style="list-style-type: none"> - HIDE when you can't run..... <ul style="list-style-type: none"> • Hide in area outside shooter's view • If possible, hiding areas should be behind locked solid doors with no windows • Lock or block entry to your hiding place • Silence your cellphone and remain quiet • If time allows, bring makeshift weapons with you in case you have to fight | <ul style="list-style-type: none"> - FIGHT as a last resort <ul style="list-style-type: none"> • Attempt to incapacitate the shooter • Act with physical aggression and commit to your actions • Improvise weapons or throw items |
|---|--|---|

Remember....Your life depends on your actions!

Review of Exit Pathways

Where are the exits that take me directly outside from the 6th Floor?



6th Floor Plan 

(Additional on Next Page)

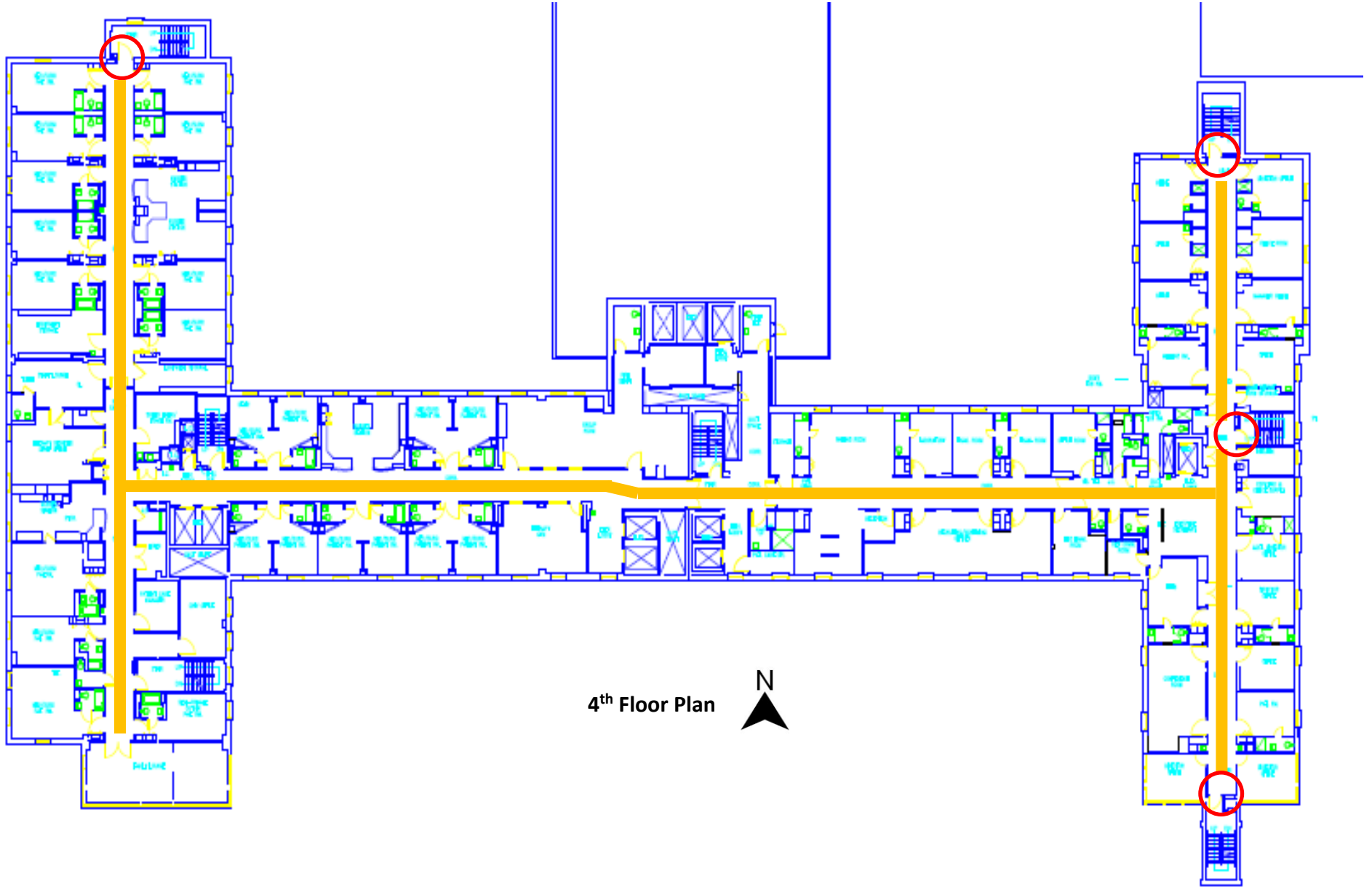
Where are the exits that take me directly outside from the 5th Floor?



5th Floor Plan 

(Additional on Next Page)

Where are the exits that take me directly outside from the 4th Floor?

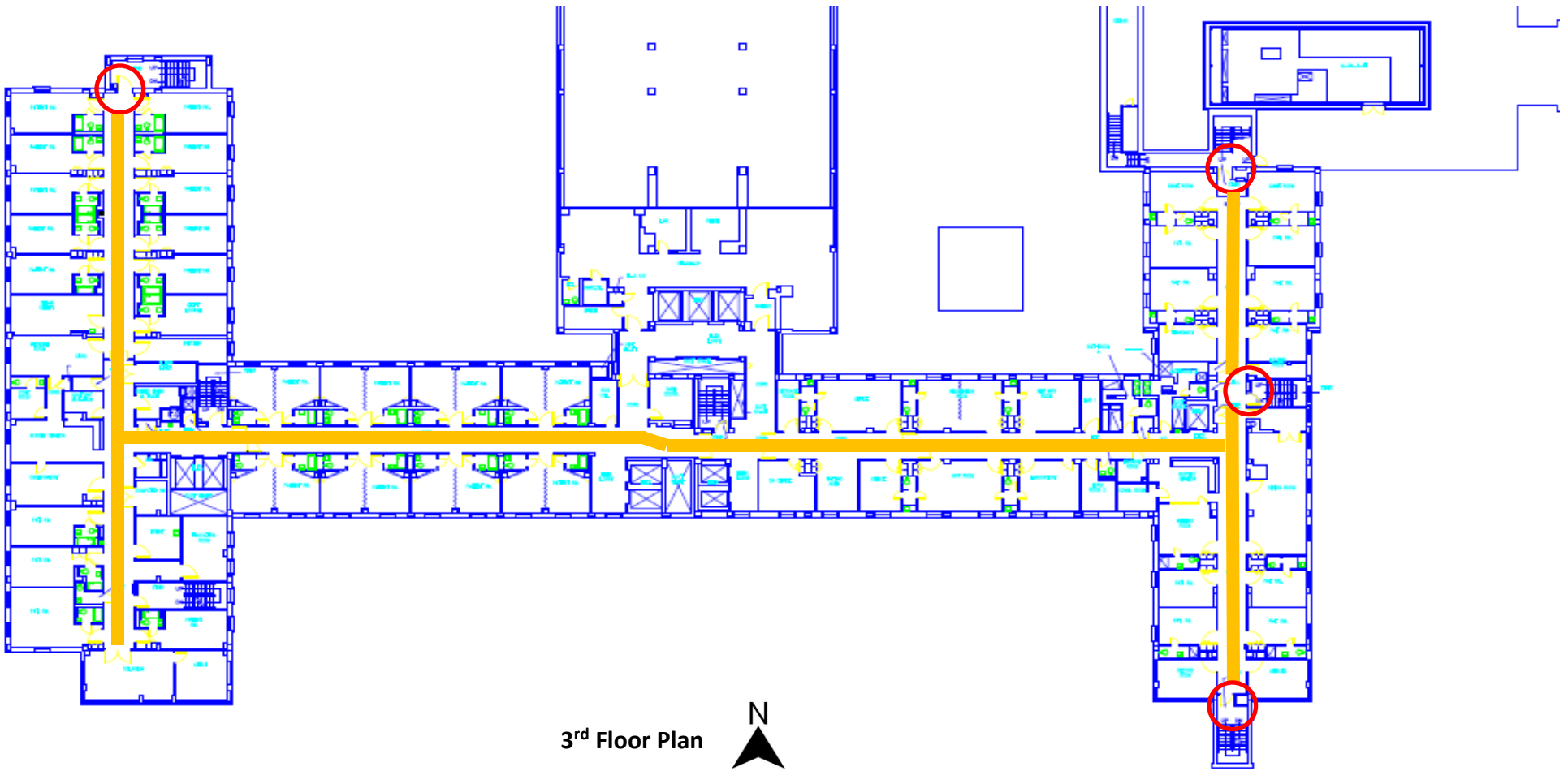


4th Floor Plan



(Additional on Next Page)

Where are the exits that take me directly outside from the 3rd Floor?

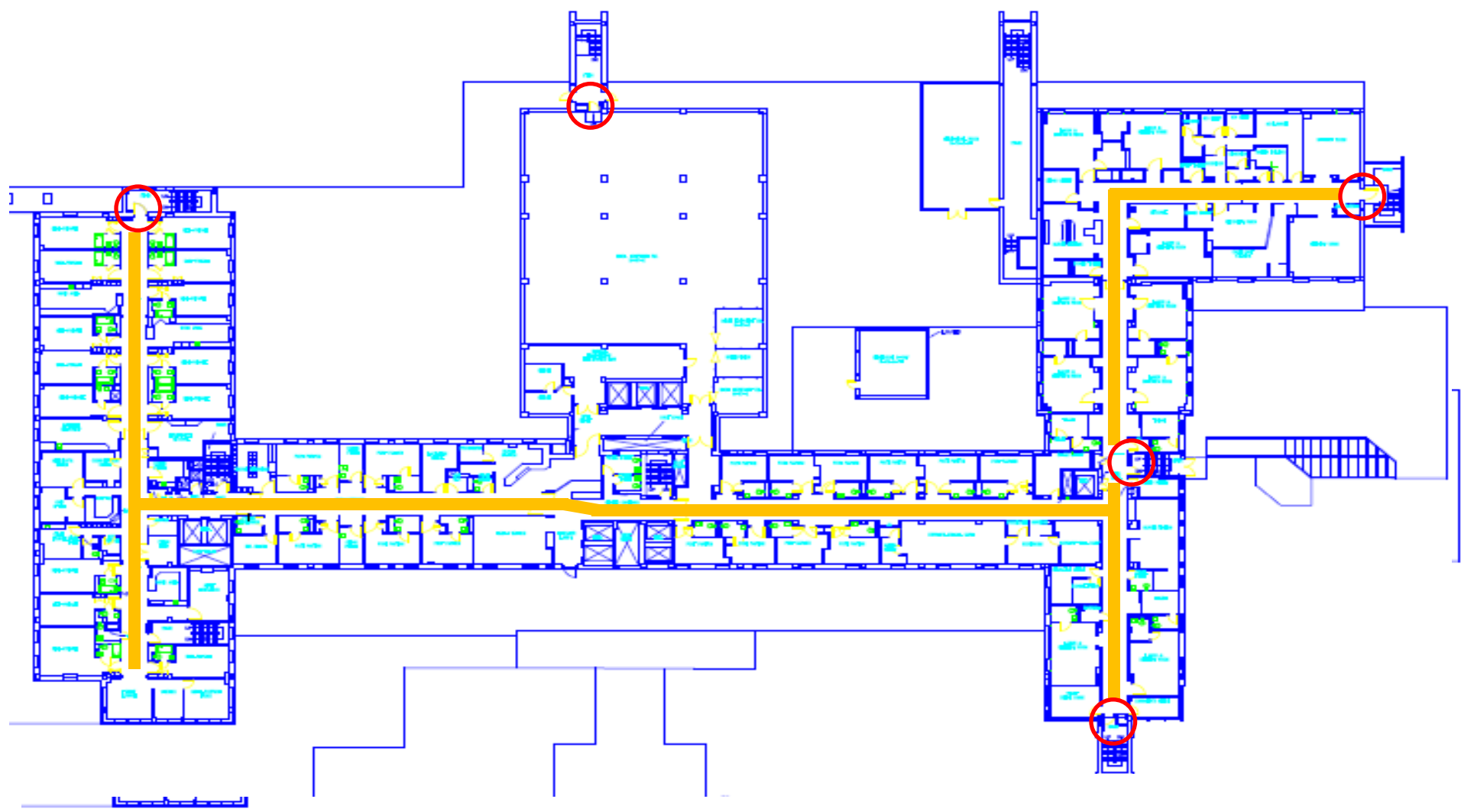


3rd Floor Plan



(Additional on Next Page)

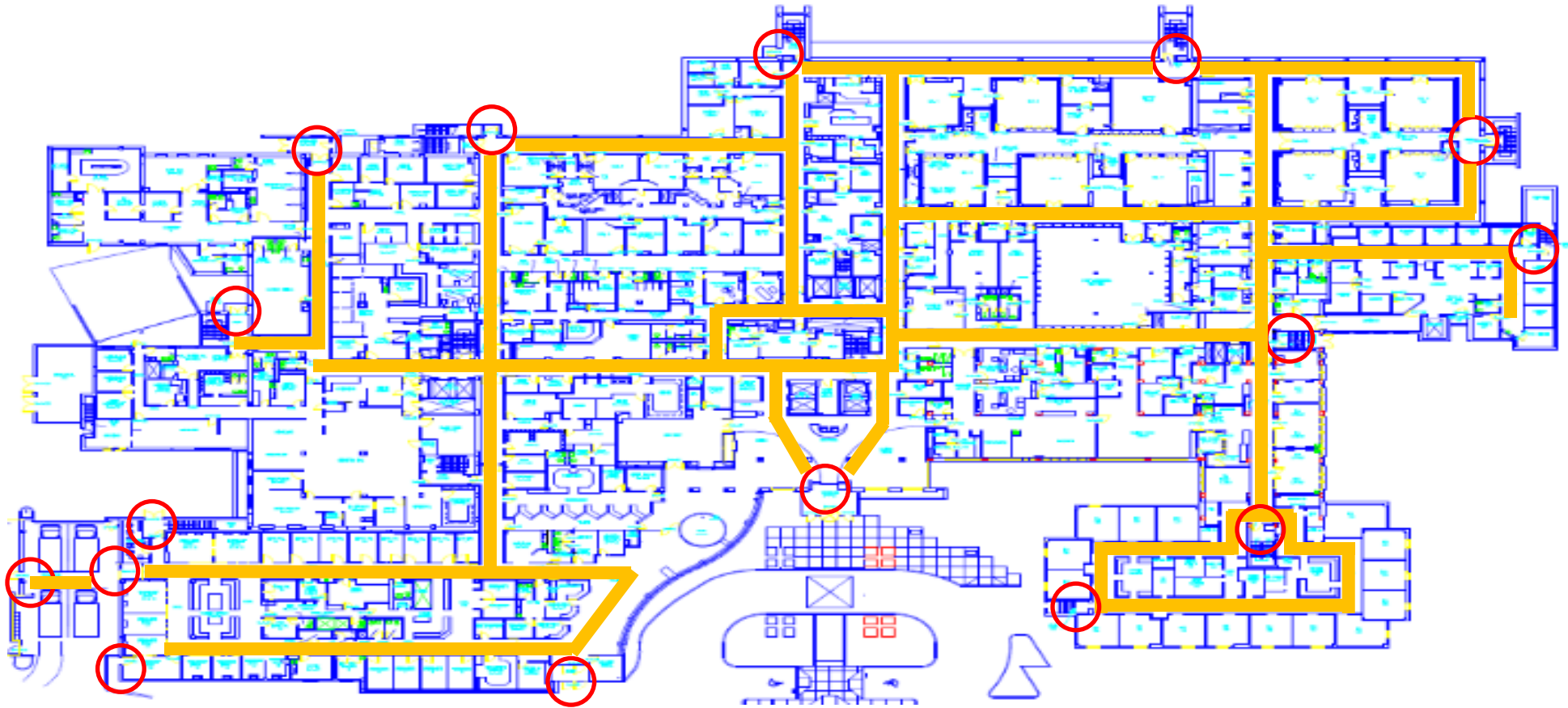
Where are the exits that take me directly outside from the 2nd Floor?



2nd Floor Plan 

(Additional on Next Page)

Where are the exits that take me directly outside from the Main Floor?



Main Floor Plan



(Additional on Next Page)

Where are the exits that take me directly outside from the Ground Floor?

