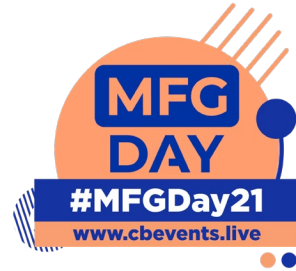


**CLICK  
BOND®**

+



Welcome

Click Bond

AR+VR

Our People

Videos

Games

Activity

# WELCOME TO Manufacturing 4.0

INTRODUCTION

# Manufacturing Day 2021

Together with the National Association of Manufacturers, The Manufacturing Institute, MEP Centers, and federal agency partners, Click Bond is part of the Manufacturing USA network celebrating manufacturers who make the products that keep us safe, enrich our lives, strengthen our economic and national security, and provide countless opportunities for our communities and workforce.



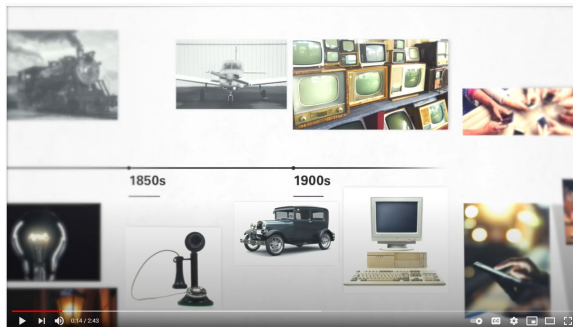


# The Power of Ideas

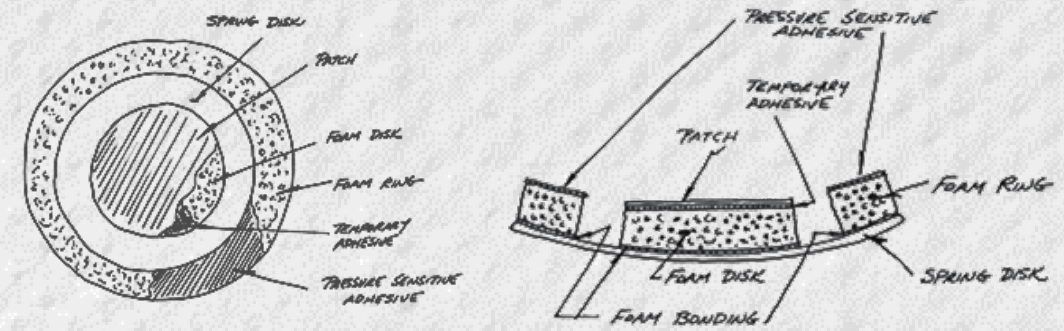
Our first invention quickly patched fuel leaks on airplanes to help them get back into the air.

- 30yrs. of Experience
- Elegant & Innovative Adhesive Bonded Fasteners
- Creating Solutions for What's Next

## The Power of Ideas video



## Are You Onboard video



CLICK PATCH PROJECT  
APPLICATOR DESIGN

20 MAY 79

Pg-2

## FOR US, IT STARTED WITH A SKETCH ON A NAPKIN.



# Creators Wanted for Students

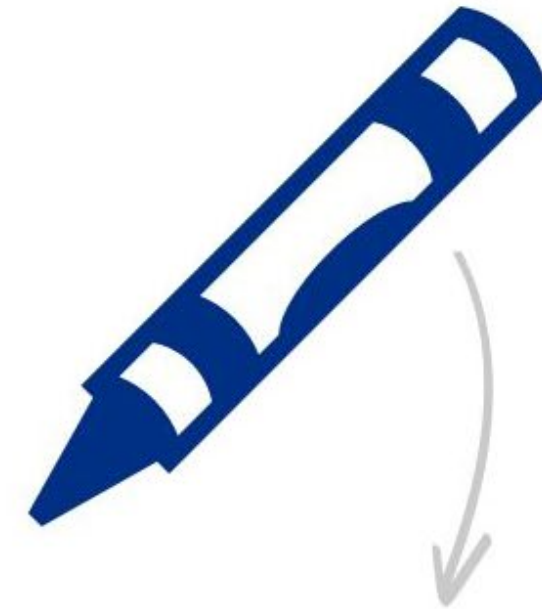
Manufacturing | Imagine an Industry Where You Create Your Own Future

[Download the Creators Wanted Teacher Tool Kit](#)



If stacked in \$100 dollar bills, manufacturing's annual contribution to the U.S. economy would be **twice as tall as Mount Everest.**

Manufacturers in the United States make **spaceships, cars, computers, medicine and food.**



Everyday objects like Crayola Crayons, Glossier cosmetics and Post-It Notes **are all made in the United States.**

# Classroom Activity

Let's create! For this paper airplane lab, you'll need paper, paper clips, tape, staples, hole punch, or brass fasteners (all items are optional, and feel free to include anything else at your disposal to have fun).

[Video and Activity Instructions](#)



# Paper Airplane Lab

Scientific Inquiry refers to the many different ways in which scientists investigate the world. Scientific investigations are done to answer questions and solve problems. Many times investigations are said to follow a Scientific Method. Scientific methods are steps that are followed during an investigation to make sure that the information gained during the investigation is accurate and true. During this investigation, you will practice the steps as well as different science skills. Be sure to read everything in this handout and refer to your composition book if needed.

- **Part One: Pose a Question or Problem**

Now, as a group, decide what you would like to test: the length of the plane, the weight of the plane, the style of the plane, position of weights on the plane, or something else. Write a question that states EXACTLY what your group would like to investigate:

- **Part Two: Develop a Hypothesis**

Based on how we defined best and what you now know about paper airplanes, write a hypothesis that states which type of paper airplane (that you are testing) will fly the greatest distance and WHY you think this. Use complete sentences.

- **Part Three: Design an Experiment (list your materials and procedures)**

Independent Variable – it is what you, the scientist will change or test.

Dependent Variable – this is what you will be measuring.

Controlled Variable - Everything else that you could possibly change, but DONT.



# AR + VR

Analytics and automation have changed manufacturing operations. AR is now transforming human processes by improving efficiencies, reducing costs, and unlocking new business value.



# AR Augmented Reality

An interactive experience of a real-world environment where the objects that reside in the real world are enhanced by computer-generated perceptual information. AR can be defined as a system that incorporates three basic features: a combination of real and virtual worlds, real-time interaction, and accurate 3D registration of virtual and real objects.



**Chris Galassini**  
Field Applications  
Engineer



**Gino Galassini**  
Field Applications  
Engineer

As kids, we were always taking things apart and putting them back together again. At that age, we knew we wanted to be engineers. We developed a love of aviation. Gino obtained his pilot's license. We set out together to have careers that combined flight and how things are assembled. At Click Bond, that's exactly what we do!

As Field Application Engineers, we help support companies in the design and manufacture of aircraft and spacecraft. Currently, we are focused on the next generation of manufacturing, developing augmented reality tools to increase assembly quality and speed. We love that we get to be at the forefront of developing new technology.

It's rewarding to know that our work enables airplanes to safely fly people all over the world, spacecraft to land on Mars, and defense programs to keep our troops safe as they serve our nation.



# VR Virtual Reality

A simulated experience that can be similar to or completely different from the real world. Immersive VR changes your view, when you move your head. A person using virtual reality equipment is able to look around the artificial world, move around in it, and interact with virtual features or items. Virtual reality typically incorporates auditory and video feedback.

If you'd like to view one of our VR rooms in your classroom using a browser, email [tj.stoltz@clickbond.com](mailto:tj.stoltz@clickbond.com) for support and instructions.



**TJ Stoltz**  
Brand Experience  
Manager

At Click Bond, we're always striving to find new solutions to connect with each other and our customers. Though COVID-19 presented challenges across the world, many solutions emerged across many video communication platforms.

We've begun to find success through integrating a VR platform called Spatial. It's allowed us to create a new, elevated virtual experience. Here, we're able to connect and collaborate with remote employees.

In our experimentation, it's also proven to be an immersive experience for future partners and customers, to help us understand how we might be able to help solve their manufacturing challenges and introduce them to the extensive solutions we have available.

# What makes a Click Bonder?

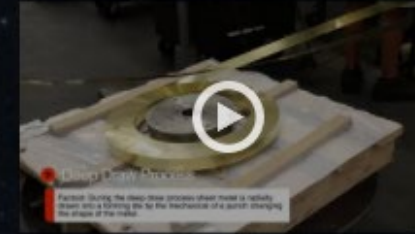
At Click Bond, we aim to honor the unique personality and skill set of every team member by thinking of our team as one united organism powered by a collective spirit. Operating within an ecosystem of curiosity and frequent opportunities for learning, Click Bonders are able to discover their own respective paths within the company, knowing that there is a rock-solid foundation of support every step of the way.

Within this culture, we foster an environment of wholeness, enabling team members to bring their entire personalities to work. Our working process is guided by peer-to-peer relationships, with little emphasis placed on hierarchy and silos. Through these relationships and by championing our people, Click Bond is able to follow a natural evolutionary path toward growth and continued well-being.



2021-2022 | Manufacturing Day

## Video Playlist



**What is Deep Draw Manufacturing?**



**Manufacturing and Creativity – How Do They Blend?**



**Aviation Design Challenge Sponsorship**



**What's the Culture Like at Click Bond?**



**Should I Consider a Career in Manufacturing?**



**How Does Click Bond Support its Customers?**



**Click Bond Sportsman Plane Build Timelapse Video**



**What Do Toolmakers Do at Click Bond?**



**What's Cool About Shipping and Receiving?**



**How Does People Operations Support our Employees?**



**How Does Click Bond Communicate to the World?**



**It's All About the Details in Quality Assurance**



**5,000 Products  
Offered Worldwide**

**Lighter, Faster,  
Stronger**



2021-2022 | Manufacturing Day



Air



Space



Sea



Land



Industrial

**NUTPLATES**



**STUDS & STANDOFFS**



**MOUNTS**



**ACRES® SLEEVES & BUSHINGS**



**INJECTION MOLDED BRACKETS**



**CLICK PATCH®**



**LOMAS® SCREWS**




**ADHESIVES**



**INSULATION BLANKET FASTENERS**





A background image showing a Mars rover and a helicopter on a reddish, rocky planet surface. The rover is in the foreground, and the helicopter is flying in the sky. The image is partially obscured by a diagonal split into white and red sections on the right side.

**Be Curious  
Challenge Yourself.  
Challenge Normal.**

**CLICK  
BOND®**

