

NEW ALBANY & UNION COUNTY

VISITOR'S GUIDE

2025

A product of the
New Albany Gazette.

WELCOME

—TO—

NEW
ALBANY

Est. MISS. 1840

VISIT • EAT • SHOP • STAY

New Albany
Gazette



**Advanced Heating
& Air Conditioning, LLC.**
(662) 316-5415
FINANCING AVAILABLE

**PRO
PARTNER**

***Keep your family
cool & comfy
this summer!***

**421 WEST BANKHEAD STREET
NEW ALBANY, MS 38652
662-316-5415**



*Welcome Home
to New Albany*

CONTENTS

Welcome	6-9
First Stop	10
Places to Visit	12
Places to Eat	23
Events to Attend	36
Where to Shop	42
Attractions & Rental Venues	54
Where to get Help	60
Places of Worship	79

The New Albany Visitors Guide is a product of The New Albany Gazette.

Contact us at 130 W. Bankhead Street, P.O. Box 300, New Albany, MS 38652 or call 662-534-6321. Email comments to news@newalbanygazette.com

Information gathered and edited by J. Lynn West
Advertising sales by Leigh Knox
Layout & ad design by Sonny Harrison

THE NEW ALBANY GAZETTE
WOULD LIKE TO THANK ALL OF
OUR ADVERTISERS FOR
PARTICIPATING IN THIS YEAR'S
VISITOR'S GUIDE AND FOR
SUPPORTING THIS COMMUNITY
PROJECT TO PROMOTE NEW
ALBANY AND UNION COUNTY.

IF YOU WERE UNABLE TO
PARTICIPATE THIS YEAR, PLEASE
MAKE PLANS TO JOIN US IN
NEXT YEAR'S VISITOR'S GUIDE TO
SUPPORT OUR REMARKABLE AND
HISTORIC COMMUNITY.

CONTACT LEIGH KNOX AT
662-266-0437 TO RESERVE
YOUR SPOT OR ASK ABOUT
ADVERTISING OPTIONS.

New Albany
Gazette

130 W BANKHEAD STREET, NEW ALBANY, MS 38652

(662)534-6321 | P.O. BOX 300

Welcome to New Albany

The Best Small Town in America!

Hello on behalf of the City of New Albany.

I would like to take this opportunity to welcome you to the place that we call home.

I would like to invite you to take a walk or bike ride on our 44-mile-long Tanglefoot Trail, visit our historic downtown, shop in our unique stores, go to the best museum in the state, check out a show at the Magnolia Theatre, go to our state-of-the-art sportsplex, or just sit around and relax.

We want you to enjoy your time here.

New Albany is a special place to us and we look forward to sharing it with you.

If we can do anything to make your stay more enjoyable while you are here, please don't hesitate to let us know.

Thanks for visiting us.



Tim Kent
Mayor



Welcome to New Albany where community and nature's beauty come together. It's a place filled with culture and a strong sense of place; a thriving historic downtown and a gateway to the Hall of Fame Rails to Trails walking and bike path, The Tanglefoot Trail.



New Albany has been recognized as the Best Southern Small Town by USA Today and Best Town in the South by Southern Living and it is easy to see why. With award winning school systems, healthcare facilities, a library with free bike rentals and a must-see museum, New Albany is an adventure on your travel list of places to visit.

Home to approximately 8,000 residents, New Albany is a hub to larger cities and major universities. New Albany is the optimal setting for family, friends, tourists, and businesses. So come see who we are! You are always welcomed.

Billye Jean Stroud

Director of Community Development and Main Street



Greetings from the Town of Blue Springs! A small town with big values. We have friendly people and fine businesses ready to serve you.

Bring your children to play in our gorgeous park that Toyota graciously made possible. Come and visit with great friends, attend our local churches or just enjoy a truly down-home feel. The Toyota Plant (TMMMS) is our nearest neighbor and they provide scheduled tours as well as a state-of-the-art Experience Center. We have a Farmers' Market from May until September which includes fresh produce, baked goods and friendly faces. Our store serves plate lunches daily and we have a world-famous BBQ House that's sure to please.

Please come and spend some time to enjoy the beautiful little town we all love to call home.



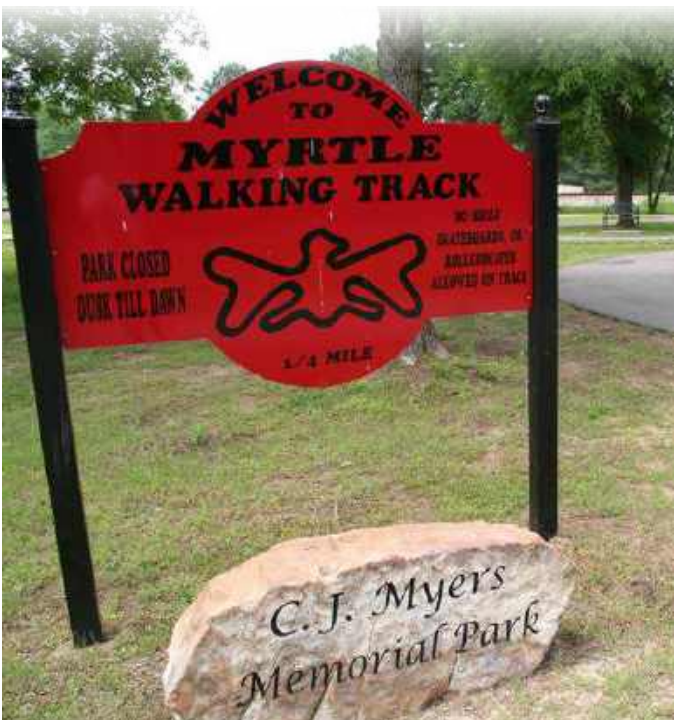
God bless,
Rita Gentry, Mayor



I'd like to invite everyone to Myrtle. We are a small town of around 500 people in north-west Union County. Myrtle has a great county school, available housing, a clinic and pharmacy, and several wonderful churches. Whether you are looking for a new home or investment opportunity, come see what Myrtle has for you and your family!



Micheal Canerdy
Mayor, Town of Myrtle



FIRST STOP

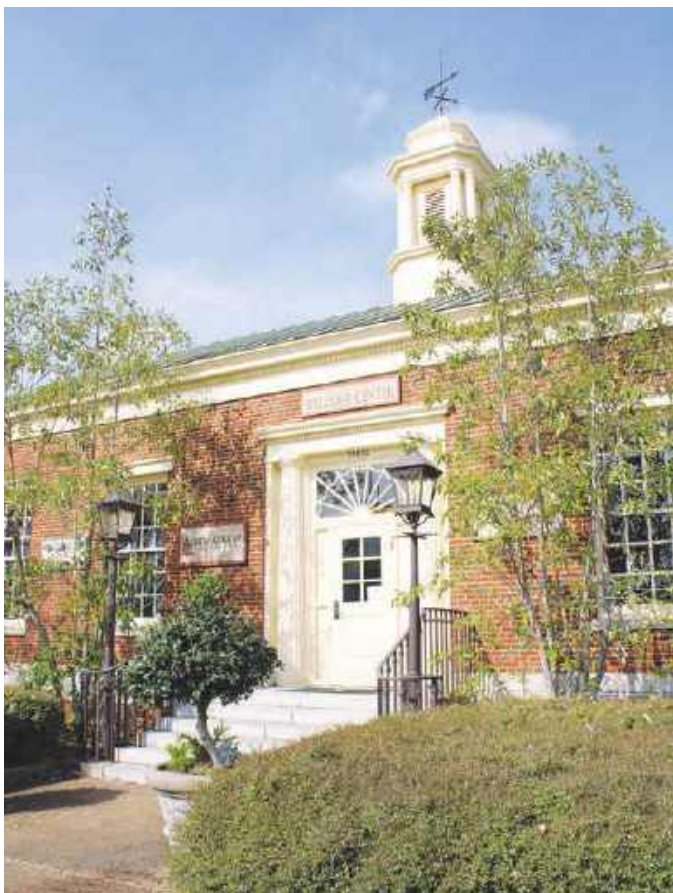
THE NEW ALBANY WELCOME CENTER

A first stop for any visitor to New Albany may be the Welcome Center in the historic former post office across from the courthouse.

There one may find information on the many things to do and places to go in our community, as well as dining, lodging and shopping information.

The building, at 135 E. Bankhead St., also houses the New Albany Main Street Association, the Union County Development Association and The New Albany Community Development Office.

The center is open from 8 a.m. to 5 p.m. Monday through Friday. For more information call 662-534-4354.



THE TANGLEFOOT TRAIL VISITORS CENTER

The new center is just off the Tanglefoot Trail adjacent to the Union County Library, just south of the Tanglefoot Trailhead Plaza and bridge over Main Street.

The center has information on the background of the historic trail, a rest area and public restrooms. One can get information on dining, shopping, lodging, local places of interest and other assistance. It is currently staffed from 11 a.m. to 4 p.m. Monday through Thursday, although those hours may be expanded.



PLACES TO VISIT

While in New Albany and Union County, visitors will find there are plenty of attractions to fill their entire day. Travelers who seek an outdoor adventure will want to hike down the Tanglefoot Trail that starts in the heart of the city, seek out the historic Ingomar Mounds in the southern part of the county, or simply enjoy a day at the ballfield or tennis court at the BNA Bank Park. For those visitors interested in the county's history, the Union County Heritage Museum or Union County Library will be points of interest as well. Whatever reason you find yourself in Union County, these next few pages offer a sampling of what we have to offer.

BNA BANK PARK

1165 Bratton Road • 662-534-1006

Two football fields, five soccer fields, 10 baseball/softball fields and 10 tennis courts. There are also three batting cages, four concession stands, a tennis pro shop, a welcome center and picnic areas as well as a handicapped accessible swing set. The park is also host to the Cotton States Baseball League. Tallahatchie Trails connects BNA Bank Park to the Park Along the River.



DISC GOLF COURSE

New Albany Park Commission • 662-534-1006

18-hole course spread throughout the Park Along the River, Tallahatchie Trails and BNA Bank Park.



MAGNOLIA CIVIC CENTER & CINE THEATRE

127 East Bankhead Street • 662-266-0796

This facility is dedicated to the enhancement of the quality of life for all citizens of New Albany and Union County. Three primary focus areas for facility use are continuing education of all sectors of the community, opportunities for civic and cultural growth, and economic development. Programs include the Miss New Albany Hospitality Pageant, which has included three top-ten finalists in the state the past several years. The venue is home to the Magnolia Theatre Company. Owned by the City of New Albany and governed by its Board of Aldermen, this facility is available to all citizens, civic groups, non-profit organizations, and industries of New Albany and Union County as outlined within the guidelines. Scheduling of the facility should be confirmed by reservation through the New Albany Main Street Association.



INGOMAR INDIAN MOUNDS MIDDLE WOODLAND SITE

Two miles on County Road 96, 5 miles south of New Albany on Hwy. 15 • 662-538-0014

While people first entered what is now Mississippi about 12,000 years ago, the construction of mounds began approximately 2,000 years ago. The period from 100 B.C. to 400 A.D. is known as the Middle Woodland Period. During this time in what is now Union County, early inhabitants constructed mounds using simple stone age tools and baskets for carrying the dirt. A major complex, Ingomar Mounds was composed of a large flat-topped, ramped mound and surrounded by 11 to 13 conical mounds. Only one is highly visible today. This ceremonial and burial complex has been one of considerable interest since first excavated in 1885 by the Smithsonian Institution. Evidence from construction and unearthed objects including bones, pottery, points, beads, glass and silver indicate that this Middle Woodland complex was used for centuries. [from U.S. Hwy. 18/Miss. Hwy. 15 interchange (Exit 64), travel south (toward Pontotoc) on Miss. Hwy. 15 for approximately 5 miles to Union County Road 96 on right. Turn right onto Union County Road 96. Travel west approximately two miles on Union County Road 96, Union County Road 96 makes sharp right angle turn to the right (north). Continue on Union County Road 96 and Ingomar Indian Mound will be visible in open field to the right.



TANGLEFOOT TRAIL

The Tanglefoot Trail is a nearly 45-mile long paved trail for bicyclists, runners and walkers that begins at the Trailhead Plaza in downtown New Albany and extends through Pontotoc and ends in Houston.

The trail, which follows an old railroad bed, draws thousands of tourists a year to New Albany. The trail is also host to Pedaling for Hope, a

bike ride on June 21, to raise money for the Regional Rehab Center and New Albany Main Street. There is no charge for its use. Motorized vehicles are prohibited but bicycles may be checked out at no cost from the adjacent Union County Library. The trail is open to the public from 30 minutes before sunrise to 30 minutes after sunset.



UNION COUNTY HERITAGE MUSEUM

114 Cleveland Street • 662-538-0014

The Museum hosts several art exhibits annually as well as other alternating exhibits and monthly programs with a variety of guest speakers and other programs almost daily. An outdoor exhibit area with a country store, doctor's office, caboose, and blacksmith shop features the award-winning Faulkner Garden interpreting flora about which he wrote. The new Sporting Life exhibit includes a wealth of exhibits concerning all forms of recreational sports as well as a searchable database listing more than 5,000 local people involved in sports. The museum is also working on preserving the history of the African American community. The Museum's gift shop offers specialty products from Mississippi and Union County. For more information visit www.ucheritagemuseum.com.

The museum also has recurring events throughout the year. Some include the Fossil Road Show Saturday, June 14, where you can learn and have fossils and rocks identified; the 25th anniversary of the unique Faulkner Literary Garden Sept. 25 and a visit with Santa Dec. 13. Museum Moments, an eclectic series of interesting programs, is every third Thursday; watercolor classes are taught the last Tuesday of the month; the William Faulkner Knitting Club meets the first and third Wednesdays; and the William Faulkner Book Club meets the fourth Wednesday of the month.



DOWNTOWN NEW ALBANY

Bankhead and Main Streets. 662-534-3438

Listed on the National Register, our downtown district features a historic courthouse, many specialty shops, antiques and eateries.



HELL CREEK WILDLIFE MANAGEMENT AREA

This area is managed by the Mississippi Department of Wildlife, Fisheries and Parks. Hell Creek is located in Union and Tippah Counties near New Albany. From New Albany, take Hwy 15 north toward Ripley. At Cotton Plant community turn left onto County Road 825. Headquarters building is 3.5 miles on the right. If you have any questions regarding Hell Creek call (662) 685-4508.



PARK ALONG THE RIVER/ ARBORETUM & TALLAHATCHIE TRAILS

217 Carter Avenue • 534-4354

Nature trail, picnic area, playground and pavilion. The Katherine Dye Nature Trail is named in honor of Mrs. Donald Dye (Katherine) because of her dedication, creativity, and extensive efforts to make the Park Along the River a reality. The Tallahatchie Trails connect the Park Along the River to BNA Bank Park. The park is beginning to undergo a multi-year \$6 million reimagining with new playground equipment, trails, structures and other features. As a result, sections of the park will be closed part of the year.



UNION COUNTY ARENA

112 Fairgrounds Circle • 662-534-1916 or 662-534-1917

The UCA is completely covered and partially enclosed. This allows for the good protection of events due to inclement weather as well as good ventilation during the hot summer months. The facility has bleacher style seating for about 2,000 people and a 100 x 200-foot soil floor arena with protection rails. The soil floor is a mixture of sand and clay that can be tilled for horse events and rodeos or packed for concerts or other events requiring a hard surface. There are three concrete concourses that can be used for many activities including meals, meetings, exhibits or other events.



UNION COUNTY LIBRARY

219 King Street, New Albany, MS 38652 | (662) 534-1991



WILLIAM FALKNER BIRTHPLACE SITE

204 Cleveland Street •
662-538-0014

The Falkner Birthside Inn
The Union County Historical Society has purchased the former pastor's home on the site of William Faulkner's birth, renovated it and named it The Falkner Birthsite Inn. The house is a short-stay inn, not a bed-and-breakfast, and is suitable for weekend guests. It can be used to house visiting artists and speakers for museum programs as well. There are four bedrooms in the two-story inn – each equipped with Wi-Fi and smart TVs – along with two baths, a parlor, dining room, kitchen, game room/library, and laundry room. Prices range from \$133 for one room to \$362 for the whole house, which sleeps eight.



NEW ALBANY'S DOWNTOWN MURALS

New Albany Main Street Manager Billye Jean Stroud this past year obtained a \$100,000 grant in ARPA funding to pay for the five murals on downtown buildings, done with widely acclaimed mural artists.

The first, on the side of Nico's, features a nature theme. One on the side of Alan Cousar's building at the corner of Carter

Avenue and Main Street includes history and features the former Jockey Yard. Another on the east side of Union Appliance is a panoramic salute to the community's musical heritage. A fourth facing those driving into town from the Tallahatchie River Bridge simply welcomes everyone. A fifth will feature more history and fun facts. Deborah Mansfield of West Point, Graham Carraway and Gavin Bird are the artists.



OTHER NOTABLE DAYS

Master Gardeners Plant Sale Saturday, May 17,
at the Union County Heritage Museum

New Albany Main Street Gala fundraiser,
downtown, Saturday, April 26

Young Entrepreneurs Fair, Cooper Park,
Friday and Saturday July 11-12

Small Business Saturday, downtown, Nov. 29

Sept. 11 Patriot Day Program, Magnolia Civic Center

Halloween Festival, downtown, Friday Oct. 31

Turkey to Tinsel, holiday shopping, downtown Nov. 27



A COMMUNITY OF HISTORIC TRAILS

Come travel our trails! Our town hosts several trails which lead you from one piece of rich local history to the next. The trails running through New Albany include the Southern Literary Trail, Blues Trail, Quilt Trail, Hallelujah Trail, Tanglefoot Trail and the Tallahatchie Trail. These trails preserve the culture and history that have shaped the great area of New Albany and Union County.

SOUTHERN LITERARY TRAIL

The Southern Literary Trail leads literature lovers across the states of Mississippi, Alabama and Georgia. This trail holds artifacts and exhibits which lead sojourners through a literary adventure with stories from authors such as William Faulkner, Borden Deal and Stephanie Saul found at the Union County Heritage Museum.

MISSISSIPPI BLUES TRAIL

The iconic Mississippi Blues Trail has two stops in New Albany. Sam Mosley and Bob Johnson, New Albany locals, maximized their talents of songwriting, producing music and performing when deciding to form a duo of their own, Mosley & Johnson. After recording several blue albums, the two found their groove as songwriters for names such as Johnnie Taylor, Bobby Bland and Little Milton. Union County musicians Elder Roma Wilson and Rev. Leon Pinson won many admirers among blues and folk music audiences, although they were evangelists rather than blues artists. Partners early in their careers, they performed at a number of festivals after reuniting in 1989. Wilson, who formed one of the first African-American gospel harmonica quartets in the 1940s, was awarded a National Heritage Fellowship in 1994. (msbluestrail.org)

QUILT TRAIL

New Albany is filled with color from the Quilt Trail, an ongoing public art project sponsored by the Union County Heritage Museum in which local artists and community members create large scale quilt patterns that are hung around town. This special tradition preserves a craft that highly impacted southern culture. (ucheritagemuseum.org)

HALLELUJAH TRAIL

Experience the best of the Bible Belt in the churches featured along the Hallelujah Trail, showcasing some of New Albany's century-old churches. Churches along this trail show the deep history of religion and worship as well as beautiful architecture and cemeteries. (hallelujahtrail.org)

TALLAHATCHIE TRAIL

Tallahatchie Trails is a 2.7 mile moderately trafficked loop trail located, via walking bridge, adjacent to New Albany's Park Along the River Arboretum. Enjoy the loop or travel by foot or bike all the way to the BA Bank Park or Tennis Complex. Dogs are also able to use this trail but must be kept on leash.

TANGLEFOOT TRAIL

Hike or bike the 44-mile Rails to Trails Tanglefoot Trail, which runs from New Albany to Houston,

Mississippi. Enjoy the beautiful scenery of fields, forests, meadows and wetlands. (tanglefoottrail.com)



PLACES TO EAT

New Albany and Union County offer lots of places to sit down and enjoy a great meal or just dessert and a cup of coffee. Downtown is one area where you will find a diverse range of eateries from Italian to Southern cuisine. From fine dining to an old-fashioned soda fountain, visitors can find a wide selection of options that pleases their appetites as well as their budgets. Barbecue, Mexican, Japanese and Chinese as well as the near-legendary dough burgers are some of the other food choices available locally. We hope you will give one of our great restaurants a try. We don't want you to leave hungry.



El Agave

Mexican Grill + Bar



Voted Best Mexican Restaurant

Voted Best Taco

650 Park Plaza Dr • New Albany, MS 38652

662-539-7011



Voted



**Voted 2024
Best Chicken &
Best Fast Food in
Union County**



GEORGE'S

FAMOUS FRIED CHICKEN

HWY 15 • (662)534-4276



- ☑ Listed in Southern Living as one of the South's most beloved burger joints
- ☑ Union County best burger and fries of 2023
- ☑ Named best burger joint in Mississippi in 2024 by Light Wave Reports
- ☑ Listed as one of the 13 Best Restaurants in Mississippi 2022 by Best Things MS
- ☑ Dubbed the state's best Hole-in-the-Wall Burger Joint 2020 and 2022 by Cheapism.com
- ☑ Spotlited in George Motz's best selling book, Hamburger America
- ☑ Featured on the Travel Channel's popular show, Burger Land
- ☑ Named Best Burger in the State by Business Insider 2014 and 2017



OPEN SINCE 1928

LOCATED IN HISTORIC DOWNTOWN NEW ALBANY

106 W MAIN STREET, NEW ALBANY, MS

662.539.7023

Tuesday - Saturday 10am - 2pm

Closed Sunday and Monday



LOCATION & HOURS

Pickup & Delivery

Mon - Sat: 4:00 PM - 10:00 PM

104 N. Railroad Avenue, New Albany

662.539.7804

Scarlet's DONUTS



**Order
Today!**



We are family owned & operated. We hand make our donuts fresh every day from our housemade batter. We feature classic, light and fluffy style, deliciously filled rounds, an old fashioned, lush cake style and seasonal specialty flavors. We even offer Delta hot tamales that are sure to impress!



FOLLOW US

805 East Bankhead St.
Suite A, New Albany
662-539-7386





MAIN STREET NEW ALBANY
eatattg.com | tgcatering.com

The Vintage Market

BREAKFAST

LUNCH

DESSERT



A retro deli serving vintage & upscale sandwiches, old fashion fountain sodas, ice cream, milkshakes, malts, Monster Shakes, soups, salads and desserts!



662-598-2055

127 W Bankhead St. New Albany



HOMEMADE DESSERTS

**218 Carter Avenue, Historic
Downtown New Albany, MS
662.539.7025**

**Thursday, Friday & Saturday: 5:00 pm - 9:00 pm
Lunch: Tuesday - Friday: 11am - 2pm
www.fishandsteak.com**



PIZZA, WINGS, SALADS, PASTA, & CALZONES

Dine In or Carry Out



(662) 365-7059

709 South 4th St, Baldwyn, MS

THE SNOW SHACK

113 West Main Street, New Albany, MS

(662) 316-0440

IN BUSINESS FOR
OVER 20 YEARS!



SUMMER HOURS

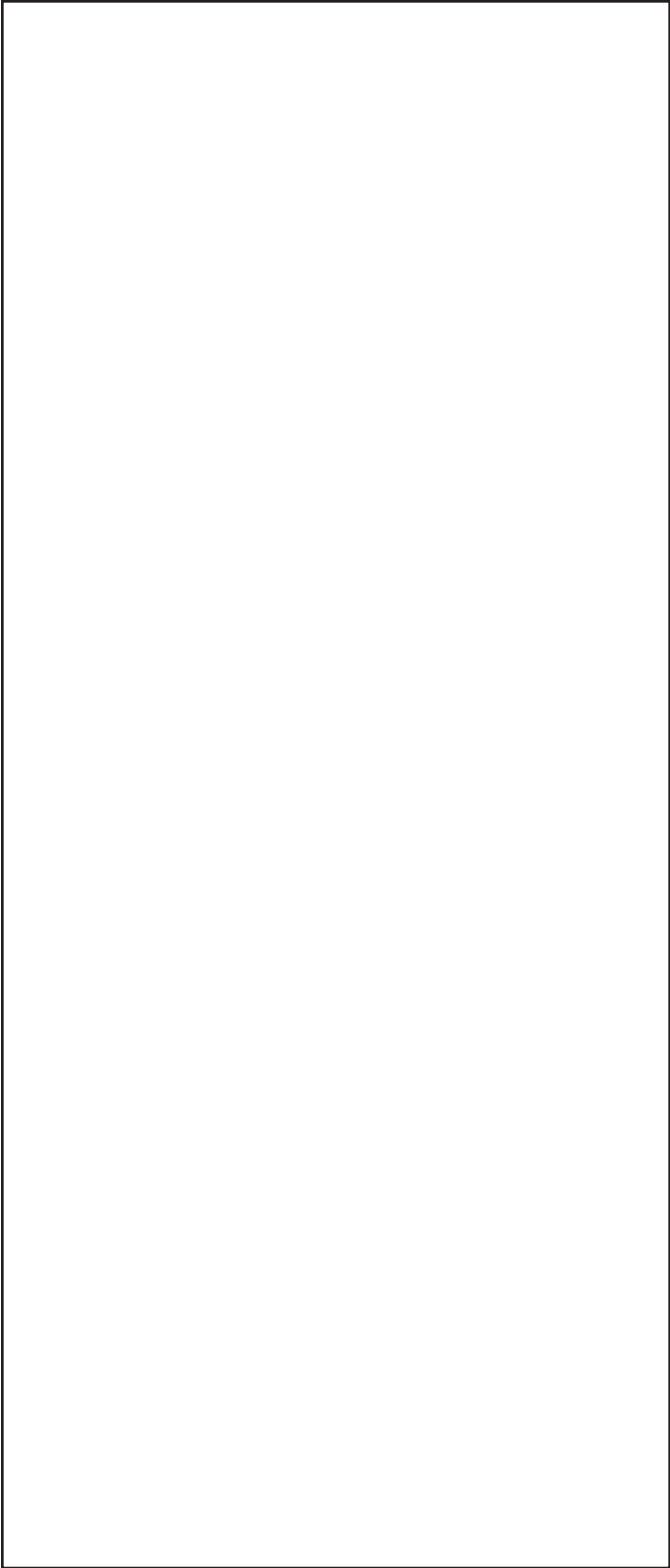
Monday-Saturday 11-8 Sunday 1-5

*During the summer:
Monday - Saturday - 11-8
Sunday 1-5*

School Year Hours

*March-May and Aug-September
Monday - Friday 2-6
Saturday 11-6
Sunday 1-5*

*Closed right after Riverfest
until Spring Break each year!*



BUTLER'S FISH & STEAK

Since 2021

Owners: Jason Butler &
Mary Margaret King



@Butlersfishandsteak

538 N Glenfield Road, New Albany, MS 38652

(662)539-7383

ButlerFishandSteak@gmail.com

Catering and Parties Welcome!

Hours:

Closed Monday | Tuesdays - Friday: 10:30 A.M. - 2 P.M.
Saturday: 3:30 P.M. - 9 P.M. | Sunday: 10:30 A.M. - 3:00 P.M.

EVENTS

Union County knows how to have fun, hosting a variety of events throughout the year. Whether it's a music festival, a fancy dinner party or a holiday tree lighting, visitors can find a chance to celebrate life with friends and family with such events as the Tallahatchie RiverFest and RiverRun, the Union County Fair and the Farmer's Market. The following pages offer more details into each celebration.

FAULKNER FEST

Enjoy the Faulkner Fest each September, the month of William Faulkner's birth, in his birthplace, New Albany, Mississippi. The fest includes Lunch with Books at the Jennie Stephens Smith/ Union County Library, Museum Moments at the Union County Heritage Museum, an awards banquet and program for the winners of the William Faulkner Literary Competition, which draws entries from all over the world and the opening of the Faulkner and Folk Art Exhibit at the Union County Heritage Museum. The awards program is usually on the Friday closest to the anniversary of Faulkner's birthdate, Sept. 25, 1897. For more information, visit <https://williamfaulknerliterarycompetition.com>.



FARMERS MARKET

The Twin Bins Farmers Market is held from 9 a.m. to 1 p.m. the second Saturday of each month at 102 West Main Street through early fall. You can find produce, small livestock and crafts.



NEW ALBANY ANNUAL CHRISTMAS PARADE

Marching bands, colorful lighted floats and even a bagpiper make this a truly special event! The parade courses through a decorated and lit downtown and stores are open late. Even Santa shows up with candy for the kids! The parade is held on the Monday following Thanksgiving each year, which will be Dec. 1 this year.



NEW ALBANY'S HOLIDAY OPEN HOUSE

Kick off the holiday season in what's been called one of the state's prettiest downtowns. This Sunday afternoon event features specials in downtown stores, door prizes and more. The event is from 1-5 p.m. on the first or second Sunday in November and this year will be on Nov. 9.

For more information, call 662-534-3438 or visit www.newalbanymainstreet.com.



LIGHTING OF THE COMMUNITY CHRISTMAS TREE AT COOPER PARK

Framed in front of one of New Albany's most iconic images, the lighting of the Christmas Tree at Cooper Park is a great memory maker for friends and family. Enjoy traditional carols sung by area choirs and warm hot chocolate and cider. Downtown stores open late. The event is usually held on the Thursday evening the week before Thanksgiving. This year it will be Nov. 9 following Open House.

For more information, call 662-534-3438.



PIONEER DAYS LIVING HISTORY EXHIBIT

Union County Heritage Museum

Ever wonder how the pioneers and settlers worked and lived back in the day? Pioneer Days Living History is a peek back to the past with dozens of demonstrations on cooking, crafting and more for children and adults. Pioneer Days this year will be Oct. 23-25 with the first two days for school groups and Saturday for families.

For more information, visit <https://uchheritagemuseum.com/>



TALLAHATCHIE RIVERFEST

Usually held the last weekend in September, New Albany's premier festival, Tallahatchie RiverFest, begins with a Friday evening street dance at the Trailhead downtown and music and specials at downtown restaurants. Saturday will have a street market including arts, food, crafts and other items, kids' activities, music throughout downtown, a pet parade, a Case collectable knife show and more! In conjunction with RiverFest is the Rubber Duck Regatta in which thousands of rubber ducks are raced down the Tallahatchie River to raise money for the Union County Heritage Museum and New Albany Rotary Club community projects. The evening will conclude with national acts on the Riverview Stage at Park Along the River. This year's RiverFest will be Sept. 27.

For more information, visit www.visitnewalbany.com.



PHARAOH'S CAR CLUB

The Cruise-In with the Pharaohs car show features a wide range of vehicles on display at the Union County Library parking lot. It is sponsored by the Pharaohs Car Club, which grew out of the car culture celebrated in "American Graffiti," recently had a chapter established in Mississippi.

The organization is all about having family fun with no profanity or alcohol allowed. Children, grandchildren and families are encouraged to attend the car shows, which also feature classic rock music. The cars shows are free for spectators to attend. Spectators may want to bring lawn chairs to sit if they plan on being at the car show for a while.

For more information visit www.newalbanymainstreet.com



THE UNION COUNTY FAIR AND LIVESTOCK SHOW

The Union County Fair is a weeklong celebration of small town and rural living, held Tuesday through Saturday, July 8-12 at the fairgrounds. From beauty pageants and livestock shows to traditional competitions, a carnival and of course fair food and many other events, make the fair a fun and relaxing way to spend an afternoon and evening. For more information on the fair, visit www.unioncountyfair.com.



PLACES TO SHOP

With many unique boutiques and other stores, New Albany is the place to shop. Find antique treasures, furniture and home décor as you explore the many shops the area has to offer. Enjoy strolling the downtown area as you pop into local boutiques to see the one-of-a-kind merchandise they offer. From soap shops to clothing stores, you will find great gifts and quality fashions. Shoes, fine jewelry, salons and much more are available in New Albany. The quaint downtown makes for a great shopping experience that you will not forget.



HALL'S FURNITURE WAREHOUSE



SAME AS CASH FINANCING & SAME DAY DELIVERY AVAILABLE

BEN HALL, OWNER
211 WEST BANKHEAD STREET
NEW ALBANY, MS 38652
(662)598-2077



HALLSFURNITUREWAREHOUSE.COM

Obsessions

boutique & salon



121 W Bankhead Street, New Albany, MS
662.538.5984

www.shopobsessionsboutique.com



FOLLOW US ON INSTAGRAM: @obsessionsboutique



FIND US ON FACEBOOK: OBSSESSIONS BOUTIQUE & SALON



DOVSTAR



Southern Traditions

Fine Jewelry and Gifts

**120 W. Bankhead,
New Albany, MS**

(662) 534-0410 | Hours: 9:30 A.M. - 5:30 P.M.



Visit us at Walton's Greenhouse where there's always room to bloom!

We carry a large variety of tropicals, ferns, roses, bedding plants, hanging baskets, vegetables, fruit trees and more.

Let us help you achieve the yard or garden of your dreams!

**700 W Bankhead Street,
New Albany MS 38652
P: (662) 534-5525**

Spring Hours: Monday, Tuesday, Thursday, Friday & Saturday - 8 AM - 6 PM
Wednesday - 8 AM - 5 PM | Sunday - 1 PM - 5 PM

BETWEEN SISTERS

NEW ALBANY,
MS



111 W Bankhead St., New Albany, MS

662.534.0505

**Monday - Friday: 10 - 5:30 P.M.
Saturday: 10 - 4 P.M.**





Hey
Nezzie
boutique

137 W. Bankhead Street, New Albany

662-297-0206

contact@heynezzie.com

@heynezzie





Van Atkins

JEWELERS



*You know she's
worth it*

Located in Historic Downtown New Albany, MS
1.866.VANATKINS | vanatkins.com

Reflections

WEDDING & EVENT VENUE

CONTACT US: (662) 539-1766

1335 CR 515 MYRTLE, MS 38650



Reflections Wedding and Event Venue is the perfect place to hold your dream wedding or special event!

Located just 8 miles from New Albany and less than 20 miles from Oxford, Reflections is quite the hidden gem.

Nestled in the woods surrounded by two stunning lakes, Reflections offers our gorgeous 3,600 square foot rustic barn and our 1,500 square foot White Chapel located conveniently across from the barn.

The options are limitless here at Reflections! Services offered include but are not limited to: Private Lodging, Catering, Photography, and DJ Services.

Call or message us to schedule your free tour and let us be the start of your Happily Ever After!



Hollywood

BRIDAL AND FORMAL

512 W BANKHEAD STREET, NEW ALBANY, MS 38652
(662) 507-9495





Native Plants - Gift Shop -
House Plants - Landscapes -
Online Nursery

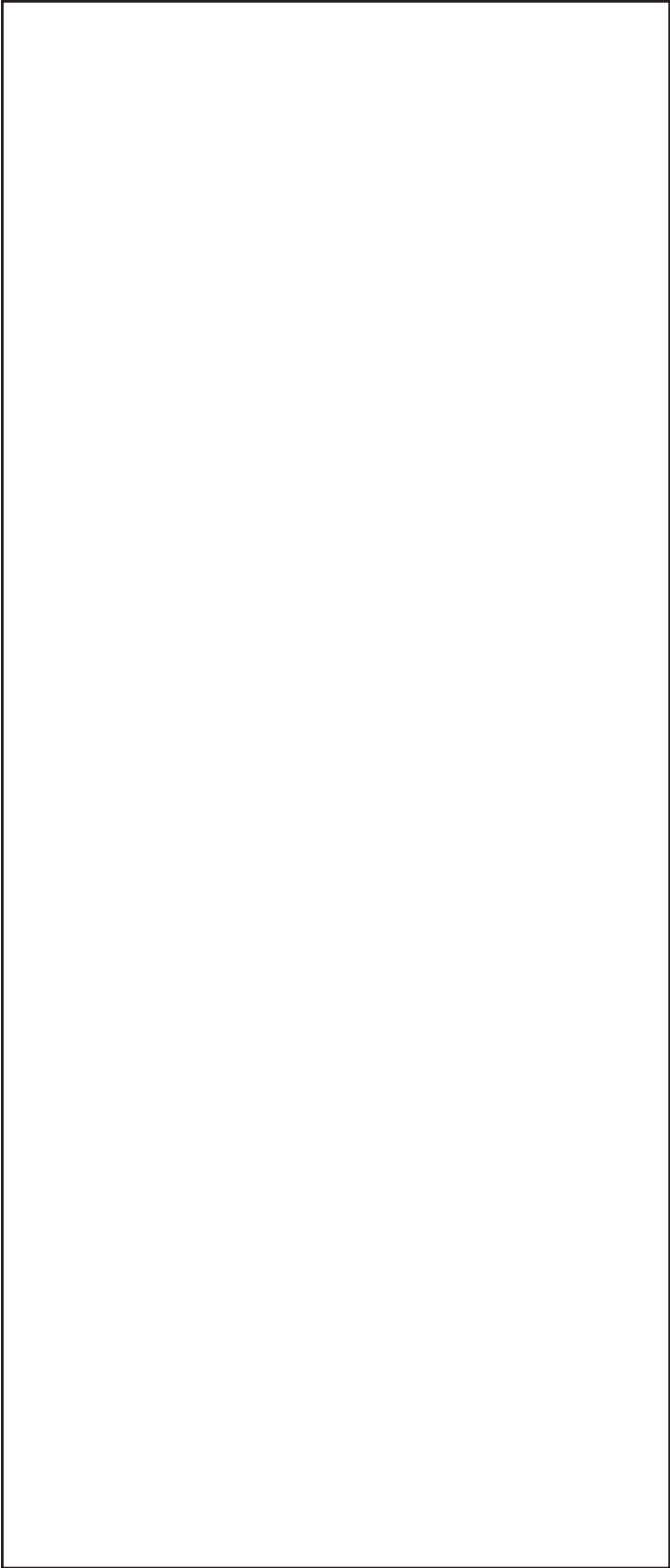


FOLLOW US



662 539 7175

921 Sam T. Barkley Dr., New Albany
campcreeknativeplants.com





All Natural Products & Herbs



102 W Main St., New Albany, MS 38652
(662) 316-9359
twinbinsfarmacy.com

SOME ATTRACTIONS AND RENTAL VENUES

THE FALKNER INN

Enjoy a memorable and relaxing stay at the Falkner Inn, a writer's retreat, located on the site of the birth of the Nobel Prize Winner William Faulkner, at 204 Cleveland Street. Adjacent to the Union County Heritage Museum, it is only blocks away from the Tanglefoot Trail. The four-bedroom Inn is just a stroll from downtown restaurants and boutiques. Call 601 415 7283 for information.



TACKETT'S BBQ

Located two blocks from downtown New Albany, Tackett's BBQ is the restored BBQ Hut from the 1960s. Kitchen with BBQ pit, is a rental venue, located in the Crossing on the Green Park, complete with picnic table and picnic space. Outdoor stage offers additional options. 662-538-0014



WILLIAM FALKNER'S LITERACY GARDEN

A public garden in New Albany featuring plants and quotes from the Nobel Prize winning writer. The garden features a fountain, seasonal color, benches as well as private space for reading, public and private events. Great place for weddings and receptions. Call 662-538-0014



UNION COUNTY HERITAGE MUSEUM

There is lots to do at the museum in New Albany. Exhibits, events, classes, it is also a great event venue for weddings and receptions. Located two blocks from downtown, 114 Cleveland St., you can explore inside and outside on the two block campus. Call 662-538-0014. www.uchheritagemuseum.com



SCULPTURE TRAIL & SCAVENGER HUNT

Located on two blocks surrounding the museum, there are almost 20 pieces of sculpture to discover. Get a brochure from the museum and start looking! 662-538-0014



THE COMMUNITY CENTER

The Community Center, located on the historic south side of New Albany has recently undergone a series of renovations and is available for gathering of up to 100 people for conferences, birthdays, reception and more. 662-534-3438, 307 Wilson Street.



THE LITTLE HOUSE

CATERING AND CELEBRATIONS



New location, 301 Highland Street
Wraps, Salads, & Sandwiches for lunch
Casseroles, Soups, Dips & more to go.

1146 CR 137, NEW ALBANY, MS 38652

662.610.1924

TUESDAY - FRIDAY: 11 - 5:30

UNION COUNTY LIBRARY

Located adjacent to the Tanglefoot Trail, the library offers in addition to its book collection free Wi-Fi and hot spots, public computer use, eBooks and audio, remote access Heritage Quest, genealogy, church and other records, weekly youth and adult programs including the special summer reading programs. The library also offers free bike rental for those who want to explore the Tanglefoot Trail – the only library in the state do offer this service. 662-534-1991, 219 King Street, hours 9-5 Monday through Friday, 9-3 Saturday.



Foam party at the Library



Now Booking for 2025!



1907 IS A CLASSICALLY ELEGANT VENUE IN NEW ALBANY, MS.
WE ALSO HAVE FULL SERVICE FLORAL DESIGNERS, E & T FLORAL DESIGNS.
BOOK A TOUR AND LET US MAKE YOUR WEDDING DAY MAGICAL.

1907venue.com

662-538-7860

1907eventvenue@gmail.com

WILLIAM FALKNER LIBRARY

Located in the Union County Heritage Museum at 114 Cleveland Street, this public reference library features approximately 800 volumes about the work of the writer. It's also a great place to research the local history archives of the museum. 662-538-0014, 114 Cleveland Street, New Albany, MS



THE HENDERSON HOTEL

Opening later this year, the Henderson Hotel is a historic 1917 structure adjoining the Tanglefoot Trailhead that has housed several prominent businesses over the years and is in the process of being renovated by Joel Bennett, who renovated the former Hamilton Hardware building into luxury apartments and retail and professional space. When completed, the former Henderson Drug building will include Lola's Restaurant, a spa, a vintage speakeasy and the boutique hotel.



TO GET HELP

New Albany is a place full of friendly people who are always willing to help. If you need car repair, healthcare or banking services, there are lots of places to offer assistance locally. Our excellent service agencies, including the police department, sheriff's office, and healthcare facilities, are here to help you during your visit to town. When you visit New Albany and Union County, you may find that you want to stay longer. If you decide to make New Albany your next home, there are several real estate agencies available that can make your dream come true.

ALL EMERGENCIES

911

NEW ALBANY POLICE DEPARTMENT

205 Carter Avenue • 662-534-2222

UNION COUNTY LAW ENFORCEMENT CENTER

300 Carter Avenue • 662-594-1943

MISSISSIPPI HIGHWAY SAFETY PATROL

1103 Bratton Road • 662-534-8619

NEW ALBANY FIRE DEPARTMENT

107 Cleveland Street • 662-534-4711

BAPTIST MEMORIAL HOSPITAL

200 Hwy 30 West • 662-538-7631

LIGHT, GAS & WATER DEPARTMENT

126 West Main • 662-534-1041

GOOD SAMARITANS

845 S. T. Barkly Drive • 662-534-0931

RED CROSS

662-534-5023

UNION COUNTY COURTHOUSE

116 East Bankhead Street • 662-534-1910

UCDA/WELCOME CENTER

135 East Bankhead Street • 662-534-4354

CITY HALL

101 West Bankhead Street • 662-534-1010

UNION COUNTY LIBRARY

219 King Street • 662-534-1991



Collins Insurance Agency

100 Oxford Road • P.O. Box 969
New Albany, MS 38652

P: (662)534-7676 • F: (662)534-5958

Ray@collinsinsurance1.com



Allstate®

You're in good hands.

A better hospital for a growing community.



Baptist Union County offers a variety of services and advanced, compassionate care from the people you've grown to trust.

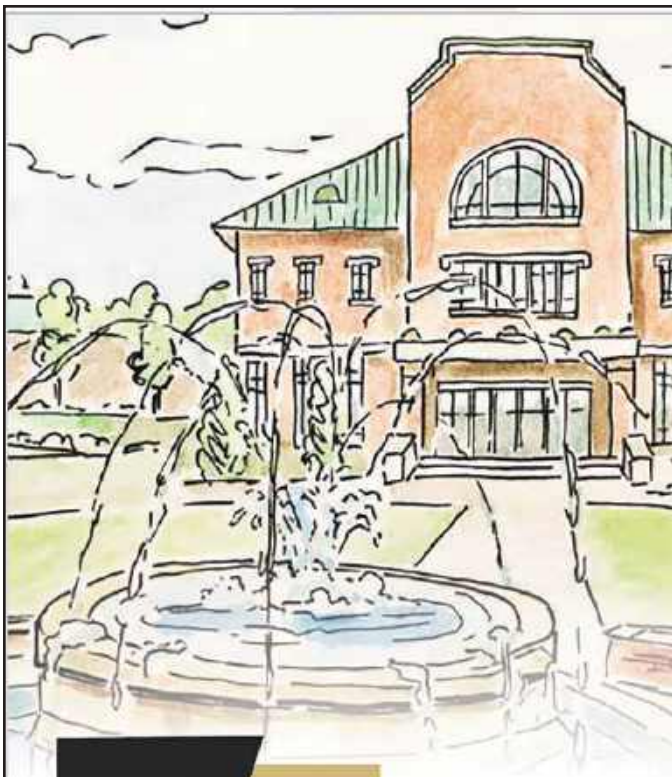
- OB Emergency Department
- 24-hour Emergency/Physician Coverage
- Inpatient/Outpatient Surgery
- Intensive Care Unit
- Labor/Delivery
- Baptist Cancer Center
- Infusion Center
- Pulmonology Clinic
- Sleep Lab
- Pediatrics
- Digital Mammography
- MRI
- CT Scan
- PET-CT Scan



BAPTIST

baptistonline.org/unioncounty
662-538-7631

Get Better.



75 *years*

OF MOVING OUR
COMMUNITY FORWARD



NORTHEAST
MISSISSIPPI COMMUNITY COLLEGE



*A Practice You
Can Grow With!*



IM&PC
INTERNAL MEDICINE & PEDIATRIC CLINIC

118 Fairfield Drive, New Albany, MS 38652
119 City Market Drive, Slatton, MS 38866

Weekday Hours
Mon-Fri: 7:00am-6:00pm

Saturday Hours
Saturday: 8:30am-3:00pm

662.534.0898
www.impcna.com

PAST. PRESENT. FUTURE.
TAKE IT IN.



Exhibits · Events · Education
Garden · Railroad Park
The INN · The ART House
& MORE!

William Faulkner Literary Garden



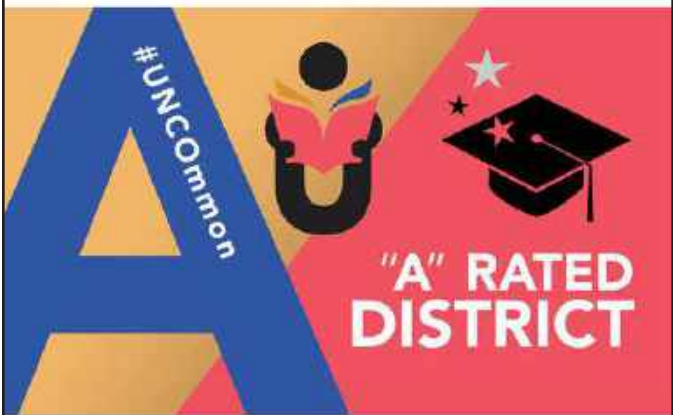
Hours: Tues. - Friday 9- 4; Sat. 10 - 3 p.m.
Other times by appointment
114 Cleveland St., New Albany, MS
662-538-0014
www.ucheritagemuseum.com



#UNCOmmon

UNION COUNTY SCHOOL DISTRICT

250 CARTER AVENUE
NEW ALBANY, MS 38652
662-534-1960 * www.union.k12.ms.us



BUILDING A MORE PERFECT UNION

Primary Care and Endocrinology



Primary Care Providers

- Troy Cappleman, MD;
Board Certified Family Practice
- Susan Cappleman, DNP, CFNP
- Paisleigh Gunn, FNP-C

Endocrinology

- Sarah French, MD;
Board Certified
Endocrinology
- Sabrina Moore, FNP-C

VISIT OUR CLINIC FOR:

- Annual Flu Vaccine
- Annual Wellness + Yearly Lab Work
- Chronic Illness (High Blood Pressure, Cholesterol, Diabetes, etc.)
- Acute Illness (Sinus, Minor Injuries, etc.)
- Diet Education with a Registered Dietician
 - Sports Physicals
- Dot Exams + Urine Drug Screens
- Accepting Adult & Pediatric Patients
 - Walk-in Appointments
- Hospital Follow-up Examination
 - Diabetic Foot Care
 - Cold, Flu & Strep Testing
 - Workman's Comp
 - In House X-rays

Check out what we offer through our endocrinology team!

- Treating 16 years & older
 - Type 1 & 2 Diabetes
- Insulin Pump Management
 - Adrenal Disorders
 - Thyroid Disorders
 - Thyroid Biopsies
 - Thyroid Ultrasounds

**Referrals are required by a
primary care provider.**

460 West Bankhead Street • New Albany, MS 38652
Phone: 662-539-7444 • Fax: 662-837-3760
Hours: Monday - Thursday 8 a.m. - 5 p.m. • Friday 8 a.m. - 2 p.m.





Martin Crotts, PharmD

Owner/Pharmacist in Charge



**1757 Highway 178 West Suite B
Myrtle, MS 38650**

Phone: 662-988-7030

Fax: 662-988-7014



Annette M. Hickey

Union County Chancery Clerk

- *Domestic Relations Cases*
 - *Land Records*
- *County Financial Information*
 - *Prior Year Taxes*

109 East Main Street, New Albany 38652
P: (662) 534-1900 • F: (662) 534-1907

ahickey@unioncoms.com

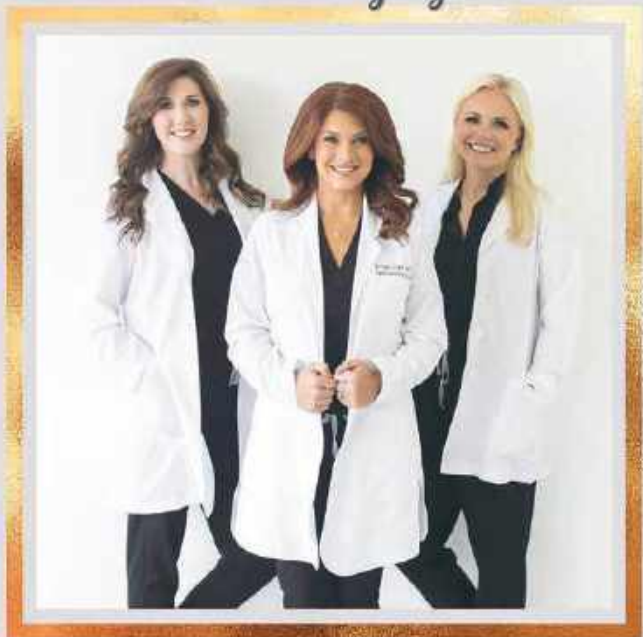
Monday - Friday: 8:00 A.M. - 5:00 P.M.



Family Clinic

of New Albany

*Providing primary & urgent care to
Union County since 2001, we are
here to listen and get you well!*



**WALK-IN OR CALL US TODAY TO
SCHEDULE AN APPOINTMENT!**



(662) 534-7777

474 WEST BANKHEAD STREET, NEW ALBANY, MS 38652



MON-FRI: 8-5

SAT: 8-2



HOUNDSTONGUE PET HOTEL

Full Service Boarding & Daycare



(662)539-1936



924 Sam T Barkley Drive,
New Albany, MS 38652



houndstonguepethotel.com

Houndstongue offers both short and long-term boarding options tailored to meet your pet's needs, as well as daycare services for daily care and enrichment.

For more info,
scan the QR code!



The Good Dog Pet Salon

Claudia Hill



(662) 317-1584






The Good Dog



BURN STUDIO

PILATES | SPIN

   @burnstudiona

*We are not a gym...we are a boutique fitness studio where everyone can come together to build community and feel comfortable in their own skin. **Be sure to shop our large variety of Lululemon!***



**Authorized
Retailer**



*125 West Bankhead, New Albany
burnstudiona.com | 662.316.7443*

Tina Holt Insurance



Tina Holt, Agent

Tina Holt, Agent

Susan Thompson, CSR

Betty Rhea, CSR

**301 E Bankhead Street,
New Albany, MS 38652
tina@tinaholtinsurance.com**

534-2108

Visit us at our new website: tinaholtinsurance.com



Eyes²See

109 ST. HWY 15 South,
New Albany, Mississippi 38652
(662)534-9288
eyes2seenewalbany@gmail.com



JMR

J. MORRIS REALTY

206 Hwy 15 S, New Albany, MS 38652

662.538.5700

propertiesnorthms.com



**Walk-ins
Welcome!**



FRIENDSHIP MEDICAL CLINIC, ^LCC

We offer:

- Onsite testing to detect flu, COVID, strep, mono, RSV, etc. to help you and your family recover as quickly as possible
- Compassionate providers experienced in diagnosing and treating a variety of conditions, including high blood pressure, diabetes, high cholesterol, etc.
- Wellness exams to monitor your overall health
 - DOT exams
 - Acute care
 - Chronic care
 - Flu vaccines

509 Hwy. 15 South, New Albany, MS
(662)534-4330

5482 Hwy. 15 N, Ecorse, MS
(662)488-8799

**Hours: Monday - Friday: 8 A.M. - 6 P.M. | Saturday:
9A.M. - 3 P.M. | Sunday 11 A.M. - 5 P.M.**

DOG PARK

The City of New Albany has provided a dog park to allow canine lovers to exercise their pets in the northern part of BNA Bank Park. The park has two sections: one for smaller dogs and one for larger dogs. It can be reached by turning off West Bankhead Street onto Tallahatchie Trail near the river. The park is adjacent to the tennis complex.



ELECTRIC VEHICLE CHARGING STATIONS

New Albany has two public electric vehicle charging stations.

One is near the edge of the library parking lot at 207 Carter Avenue with two chargers and available 24 hours a day. A second unit is at the Best Western in New Albany and only for use by hotel customers.

A fast charging station is being installed at the municipal building across the street.



NEW ALBANY UNION COUNTY AIRPORT

1034 County Road 80 | 662-534-1050

If you're flying into town, you're in luck. New Albany hosts the beautiful New Albany Union County

Airport located just a few miles out of town with courtesy car service. The Union County Airport features the following:

- Located 2 miles from city limits and 4 miles from downtown
- New terminal building with amenities for pilots
- TEE Hanger space available for General Aviation | \$75 / month
- Corporate hangers space available for lease
- 39,000 ft. lighted runway with GPS approach
- Self-service aviation fuel on field
- Jet-A fuel coming soon



AREA CHURCHES

APOSTOLIC

Apostolic Revival Center
Bethlehem Church of the Lord
Jesus Christ
Bibleway UHP Church of the
Lord Jesus Christ
Cross Roads Jesus Name
Praise & Worship Center
Church of Acts
First Pentecostal Church
Mosley Chapel Church
Nettleton Church of Jesus
Christ
New Beginning True
Bibleway - Church of the
Lord Jesus Christ
Pinedale Church of the
Lord Jesus Christ
Point of Faith Church
Truth and Worship New World
Ministries
The Sanctuary
United House of Prayer
Church of the Lord Jesus
Christ
Victory Life Center
West Ingomar Church of
the Lord Jesus Christ

ASSEMBLY OF GOD

Canaan Assembly of God
Faith Assembly of God

BAPTIST

Amaziah Baptist Church
Antioch M.B.
Beaver Dam M.B.
Beech Springs Baptist
Bethel Baptist
Bethesda Baptist
Beulah Baptist
Beulah Hill Baptist
Blue Springs Baptist
Bordoc Baptist
Center Baptist
Cherry Creek M.B.
Christ Church
Cornersville Baptist
Cornerstone Baptist
Ecru Second Baptist
Ellistown Baptist
Enterprise Baptist
Faith Baptist
Fellowship Baptist
First Baptist
First Baptist Church of Hickory
Flat
First Baptist Church of
Potts Camp
Fredonia Baptist
Glenfield Baptist
Greater New Hope M.B.
Harmony Baptist
Hillcrest Baptist
Hurricane Baptist
Ingomar Baptist
Jericho Baptist
Keownville Baptist
Liberty Baptist
Lighthouse Baptist Church
Locust Grove Baptist
Macedonia Baptist
Martin Baptist

Moss Hill Baptist
Mount Gilead Baptist
Myrtle Baptist
Neely Baptist
New Birth Community
Church M.B.
New Harmony Baptist
New Hope Baptist
New Prospect Primitive Baptist
Northside Baptist
Oak Dale Baptist
Oak Grove M.B.
Oak Hill Baptist
Oak View Baptist
Old Oak Grove Baptist
Open Door Baptist
Palestine Baptist
Palestine M.B.
Parks Baptist
Pine Bluff M.B.
Pleasant Dale Baptist
Pleasant Grove M.B.
Pleasant Hill Baptist
Pleasant Ridge Baptist
Poolville Baptist
Potts Camp Temperance Hill
Baptist
Red Hill Missionary Baptist
Shady Grove M.B.
Sherman Grove B.C.
Temple Baptist
Union Grove M.B. Church
Union Prospect M.B.
Wallerville Baptist
Watson Grove M.B.
West Tallahatchie Baptist
Zion Hill Baptist
Zion Chapel M.B.

CATHOLIC

St. Francis of Assisi

CHURCH OF GOD IN CHRIST

Golden Gate Church of God
in Christ
New Beginning Church of
God in Christ, Potts Camp
Because of Grace Ministries

CHURCH OF GOD

St. John Full Deliverance
Ministry
Church of God in Christ
St. James, Church of God in
Christ, (Ext.)
Holy Temple Church of God
Grace Pointe Church of God
Wilson Chapel Church of the
Living God

CHURCH OF CHRIST

Bald Hill Church of Christ
N. A. Church of Christ
Hwy. 178 Church of Christ
Enterprise Church of Christ

CHURCH OF JESUS CHRIST OF LATTER DAY SAINTS

Church of Jesus Christ of
Latter Day Saints

HOLINESS

Solid Rock Holiness
LPS Center Holiness

INDEPENDENT

Eternal Life Outreach Prayer
Mission
New Chance Church &
Outreach Ministries, Inc.

METHODIST

Bethel United Methodist
Bethlehem United Methodist
Calvary Methodist
Ebenezer United Methodist
Friendship Methodist
New Albany First Methodist
Glenfield United Methodist
Halls Shiloh C.M.E. Church
Hickory Flat United Methodist
Ingomar United Methodist
Mallalieu United Methodist
Mount Olivet United
Methodist
Mt. Zion United Methodist
Myrtle United Methodist
Salem Methodist
St. Mary United Methodist
Union Hill Methodist
Wesley Congregational
Methodist Church
Winborn U.M.C.

NAZARENE

New Albany First Church of
the Nazarene

NON- DENOMINATIONAL

Faith in Christ Christian
Covenant Church
By Faith Deliverance Ministries
First Nondenominational
Gates of Praise Ministries
Good News
Lily of the Valley
Hangout 4 Jesus
Living Word Faith Center
The Anchor Holds
Wells Chapel
Love Praise Tabernacle Holi-
ness Church Inc.

PENTECOSTAL

Myrtle Pentecostal Church
Old Liberty Hill Pentecostal
Family Christian Center
Refuge Church of the
Lord Jesus Christ
Sherman Pentecostal Church

ARP PRESBYTERIAN

Bethany ARP
Ebenezer ARP
Hopewell ARP
New Albany ARP

PRESBYTERIAN

Cleveland St.
Fairfield Presbyterian

TAKE URGENT CARE SPEED
TO THE REDLINE



Find us right off of
Highway 30 West on **Starlyn
Avenue** past Huddle House!

WALK-INS WELCOME
7 DAYS A WEEK!



CALL **(662) 486-2700**

TEXT **(601) 633-9230**

www.redmedclinic.com/newalbany 

188 STARLYN LANE - NEW ALBANY, MS

WALK-IN SUNDAY 1:00PM – 5:00PM
MONDAY – FRIDAY 7:00AM – 7:00PM
& SATURDAY 9:00AM – 5:00PM

ARLINGTON | BATESVILLE | CROSTOWN | FULTON | HERNANDO
NEW ALBANY | OLIVE BRANCH | OXFORD | PONTOTOC | SENATOBIA