

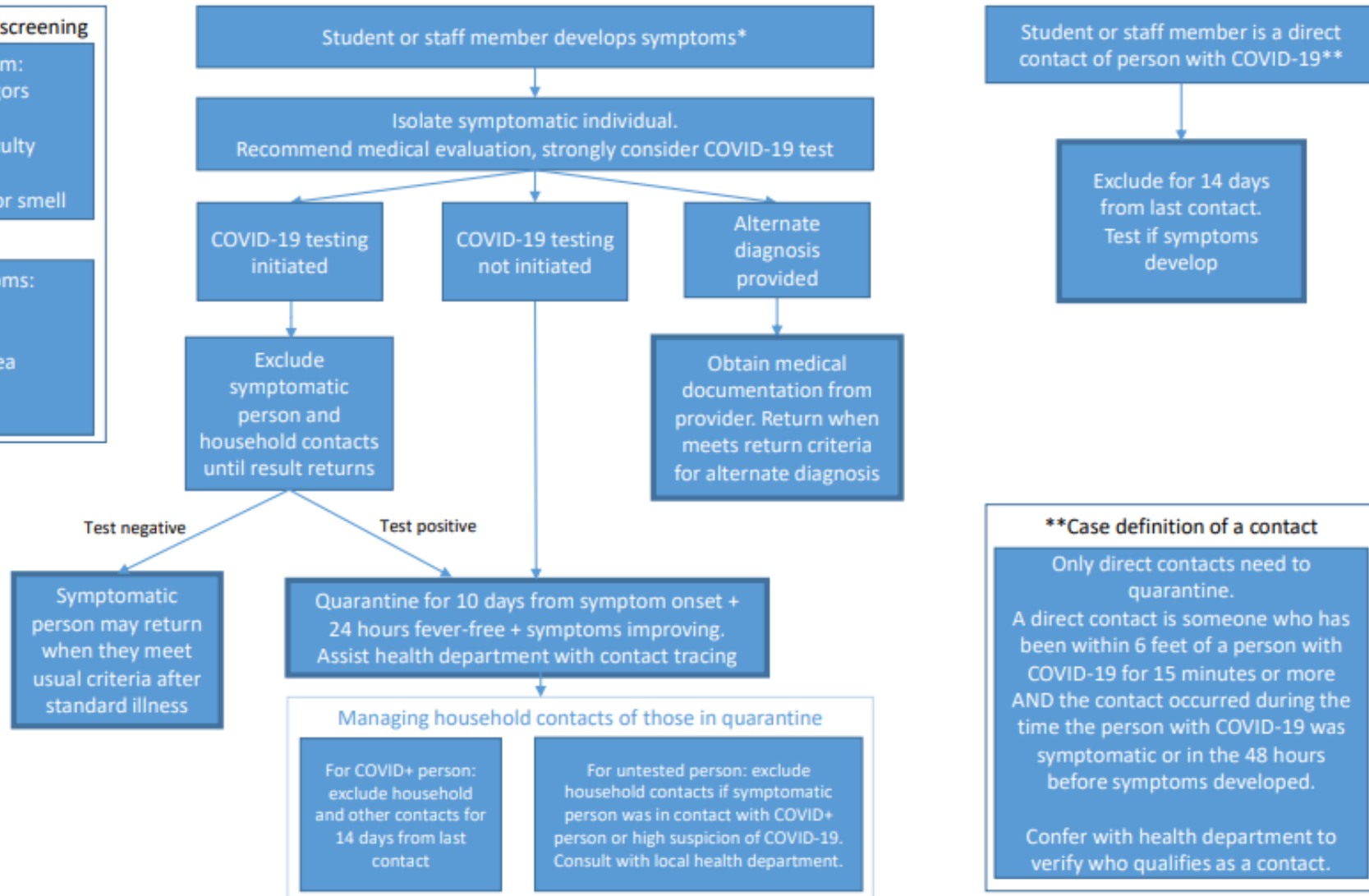
Approach to Potential COVID-19 Cases and Contacts in School or Childcare Settings

*COVID-19 case definition for screening

- Any 1 high-risk symptom:
- Fever ($\geq 100.4^\circ\text{F}$)/ chills/ rigors
 - Cough
 - Shortness of breath/ difficulty breathing
 - Change in ability to taste or smell

OR

- Any 2 lower-risk symptoms:
- Headache
 - Sore throat
 - Nausea/ vomiting/ diarrhea
 - Congestion/ runny nose
 - Fatigue



MICHIGAN CHAPTER
American Academy of Pediatrics