

Product Description

LPT Linear Highbay use best die-casting aluminum housing, anti-corrosion painting design. High-performance
Replace 300-1000W MH/HPS.

Advantage

- UL certificate.
- Input voltage 120-277VAC.
- No UV or IR in the beam.
- Easy to install and operate.
- Energy saving, long lifespan.
- Light is soft and uniform, safe to eyes.
- Instant start, NO flickering, NO humming.
- Green and eco-friendly without mercury.
- Output constant current lever can be adjusted through output cable with 1-10V.

*The product can not be connected to a dimming device when it's equipped with Motion Sensor.



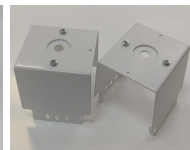
Type A
(Default)



Type B



Type C



Type D

Applications

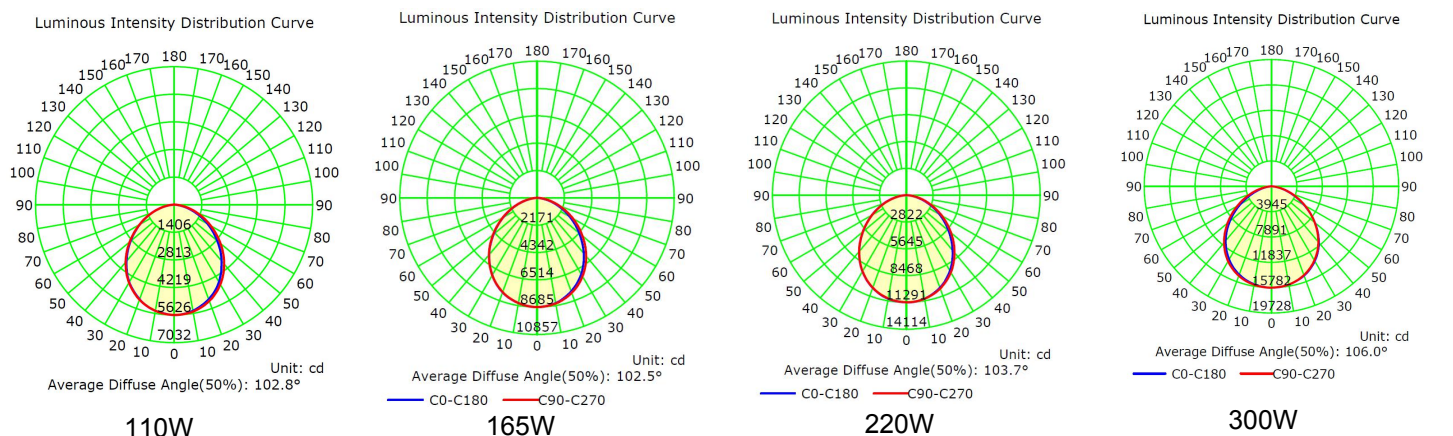
Warehouse, factory and workshops; Exhibition hall and supermarkets, etc



Specifications

| | | | | |
|-----------------------|---|-----------------|-----------------|---------------|
| | | CODE: 90283-165 | CODE: 90283-220 | |
| Input Power | 110W | 165W | 220W | 300W |
| Lumen | 14300-15000LM | 21600-22800LM | 28200-29700LM | 40000-43000LM |
| Lumen Efficacy | 136-142LM/W | 135-142LM/W | 133-140LM/W | 135-143LM/W |
| Color Temperature | 4000K, 4500K, 5000K, 5700K | | | |
| CRI | >80 | | | |
| Viewing Angle | 100 Degree | | | |
| Input Voltage | 120-277VAC 50/60Hz | | | |
| PF | ≥0.9 | | | |
| THD | ≤20% | | | |
| Driver Brand | China brand driver | | | |
| Optional Accessory | Motion Sensor, PIR Sensor | | | |
| LED Brand | Lumileds | | | |
| LED Type | SMD2835 (0.5W) | | | |
| LED QTY | 330 PCS | 504 PCS | 660 PCS | 960PCS |
| Housing | Aluminum Alloy | | | |
| Housing Color | White | | | |
| Waterproof Rating | DAMP | | | |
| Operating Temperature | -40℃ TO 45℃ | | | |
| Operating Humidity | 20%-90% RH | | | |
| Storage Temperature | -40℃ TO 80℃ | | | |
| Storage Humidity | 10%-95% RH | | | |
| Warranty Time | 5 Years | | | |
| Option Note | a= Housing colors, WH=White, b=Sensor, MS or PS or Blank (Motion Sensor or PIR Sensor) d= CCT, 40=4000K, 45=4500K, 50=5000K, 57=5700K | | | |

Photometrics

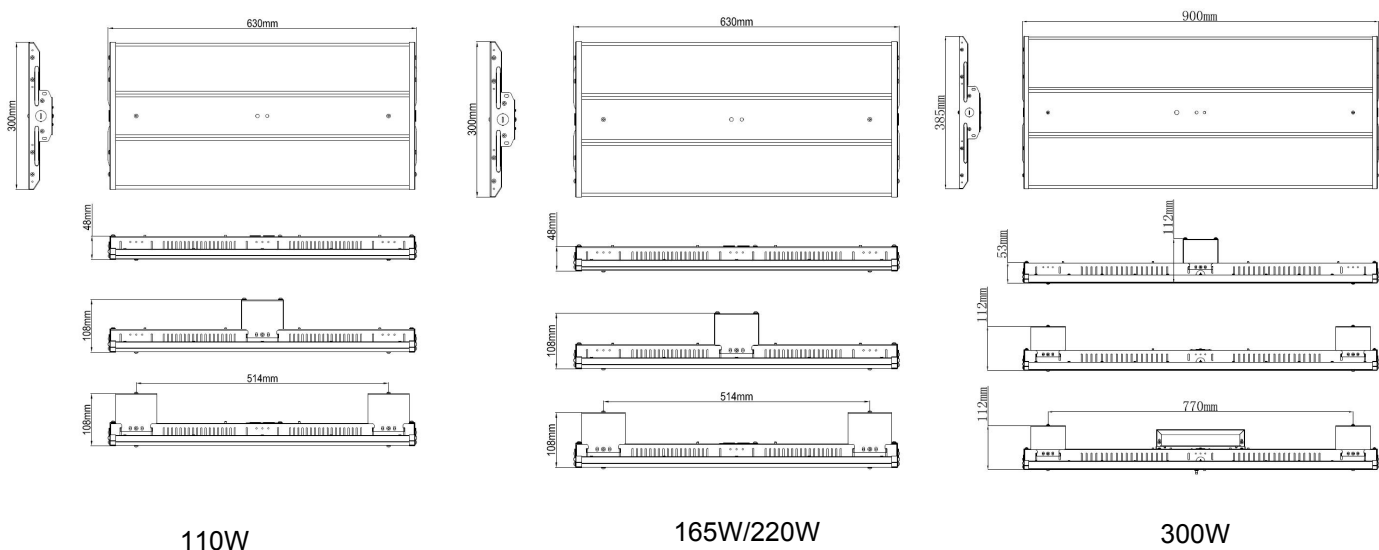


Projected LED Lumen Maintenance

| Operating hours | 0 | 25000 | 50000 |
|--------------------------|---|-------|-------|
| Lumen maintenance factor | 1 | 0.91 | 0.8 |

Data references the extrapolated performance projections for the Linear Highbay LED platform in a 25°C ambient, based on 10,000 hours of LED testing (tested per IESNA LM-80-08 and projected per IESNA TM-21-11).

Dimensions



Notice for User

Please turn off power before install or change assembly parts.
The input voltage and lamps should be matched, after connecting the power line,
Please make sure the wiring section is insulated.
No-professionals, must not install and disassemble the lamps.

After-sale Service

The product refers to electricians knowledge. Please don't disassemble it by yourself.
If any quality problem happens, please contact the factory for warranty details.
NOTE: Actual performance may differ as a result of end-user environment and application. All values are without notice.