

## 100W LED SHOEBOX LIGHT

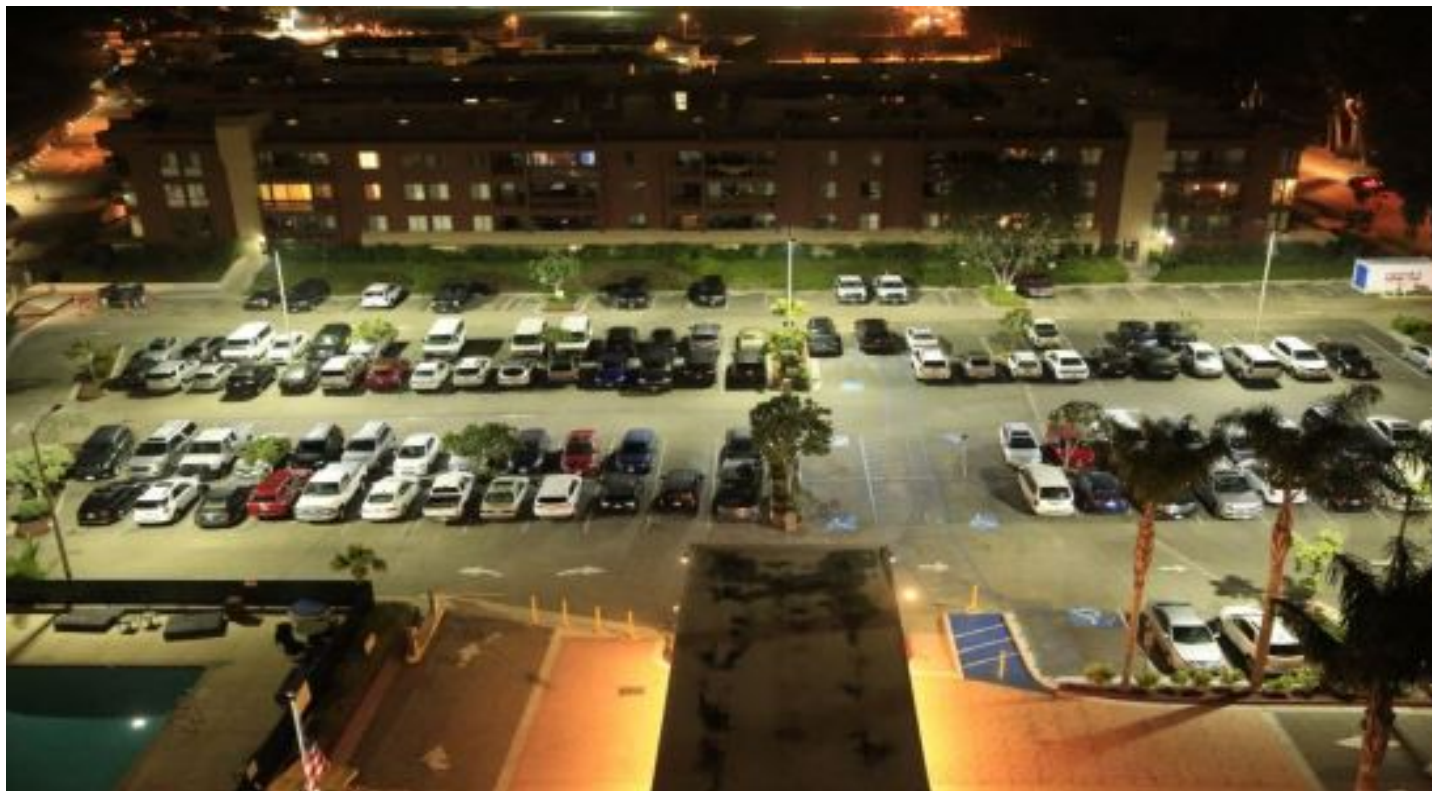


### Features

- Lumileds LED, high luminous efficiency and long working life.
- High efficiency LED Driver, the wide range input voltage AC120-277V/AC200-480V.
- Die Cast aluminium cooling design, high quality and better cooling for LED  $T_j < 85^{\circ}\text{C}$ . Excellent
- Optics design, greatly improve the light utilization and evenness.
- Motion sensor Control Available (Option)

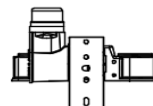
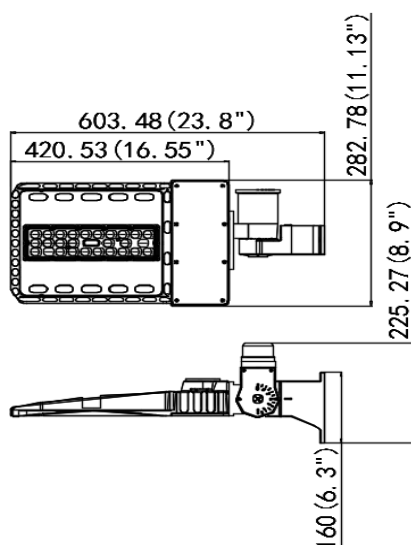
### Product Applications

LPT LED SHOEBOX LIGHT series can be widely used in outdoor lighting (Wet location), Excellent for Museums, Art Galleries, Underground parking lot, Buildings, The lawn, Industrial areas, Residential areas, Sidewalks, Parking lot, Schools and etc, and many more applications.



## Specifications

Unit : inch(mm)



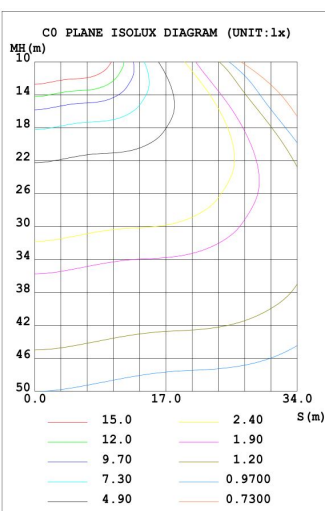
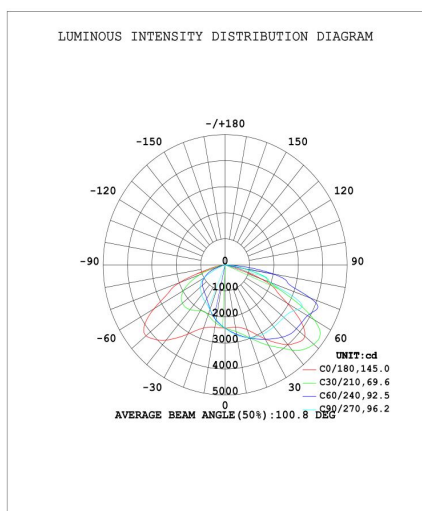
## Structure Features

- Shell materials: Aluminum & PC.
- Finish: Dark Bronze/White
- Net weight : 4.5Kg (9.9 lbs)
- Product Size: 603mm\*282mm\*160mm
- Carton Size: 570mm\*350mm\*150mm

## Technical Parameters

90140-10			
Power	100W	Lighting Angle	Type II, III, IV V
Input Voltage	AC120-277V/AC200-480V	LED Brightness Decay	<5%/6000 hrs
PF	>0.95	Working Life	>50000 hrs
Driver Efficiency	>90%	Working Temperature	-30 - +45°C
Luminous Flux	13000 Lm	Storage Temperature	-40 - +80°C
Color Temperature	4000K/5000K	Protection Level	Wet Location/IP65
CRI	Ra>70	Cable	3 core , 18AWG
Optional dimming function	1-10Vdc		

## Photometry



1.219m	903.2, 17591x	294.75cm
2m	335.6, 653.61x	483.52cm
3m	149.2, 290.51x	725.28cm
4m	83.91, 163.41x	967.04cm
5m	53.70, 104.61x	1208.79cm
6m	37.29, 72.621x	1450.55cm
7m	27.40, 53.351x	1692.31cm
8m	20.98, 40.851x	1934.07cm
9m	16.57, 32.281x	2175.83cm
10m	13.43, 26.141x	2417.58cm