

200W LED SHOEBOX LIGHT

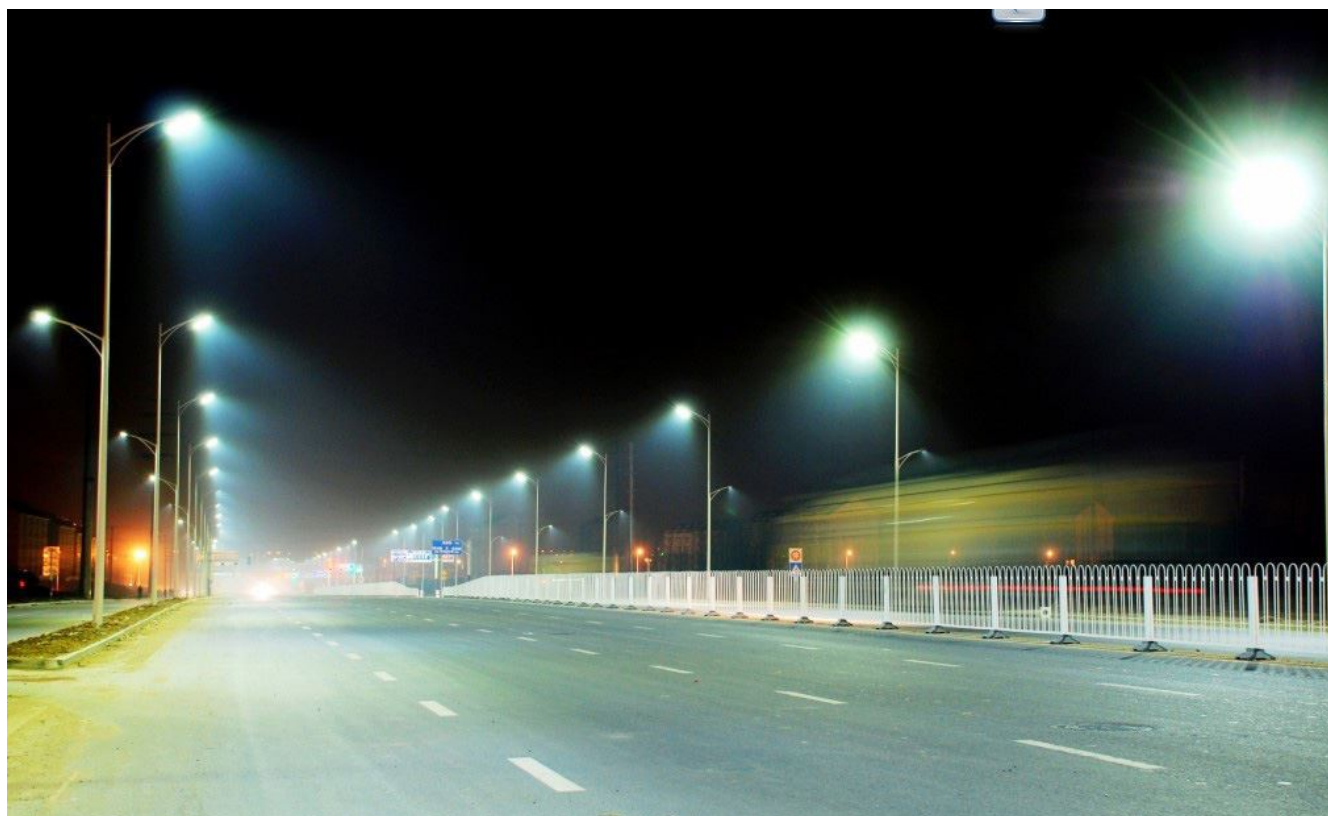


Features

- Lumileds LED, high luminous efficiency and long working life.
 - High efficiency LED Driver, the wide range input voltage AC120-277V/AC200-480V.
 - Die Cast aluminium cooling design, high quality and better cooling for LED $T_j < 85^{\circ}\text{C}$. Excellent
 - Optics design, greatly improve the light utilization and evenness.
- Motion sensor Control Available (Option)

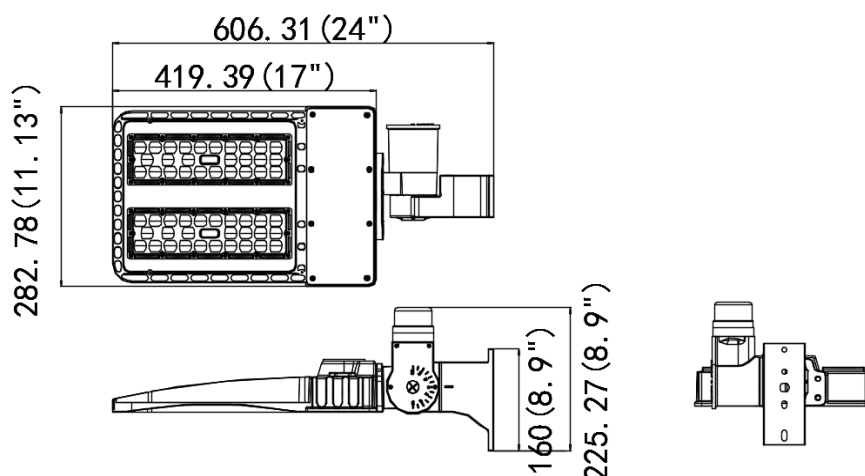
Product Applications

LPT LED SHOEBOX LIGHT series can be widely used in outdoor lighting (Wet location), Excellent for Museums, Art Galleries, Underground parking lot, Buildings, The lawn, Industrial areas, Residential areas, Sidewalks, Parking lot, Schools and etc, and many more applications.



Specifications

Unit : inch(mm)



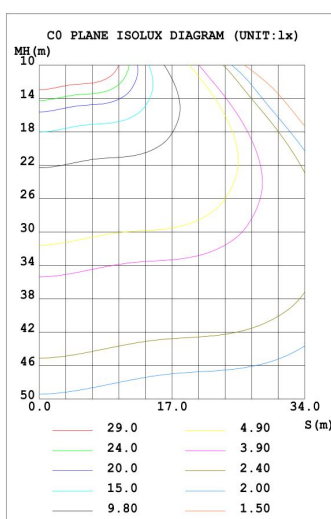
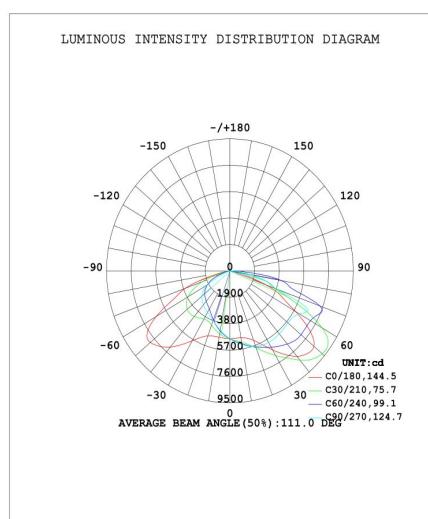
Structure Features

- Shell materials: Aluminum & PC.
- Finish: Dark Bronze/White
- Net weight : 7.5Kg (16.6 lbs) Product
- Size:606mm*282mm*160mm
- Carton Size:570mm*350mm*150mm

Technical Parameters

90140-20			
Power	200W	Lighting Angle	Type II, III, IV,V
Input Voltage	AC120-277V/AC200-480V	LED Brightness Decay	<5%/6000 hrs
PF	>0.95	Working Life	>50000 hrs
Driver Efficiency	>90%	Working Temperature	-30 - +45°C
Luminous Flux	27000 Lm	Storage Temperature	-40 -+80°C
Color Temperature	4000K/5000K	Protection Level	Wet Location/IP65
CRI	Ra>70	Cable	3 core , 18AWG
Optional dimming function	1-10Vdc		

Photometry



1.219m	1040,3459lx	464.73cm
2m	386.4,1285lx	762.35cm
3m	171.7,571.3lx	1143.53cm
4m	96.59,321.3lx	1524.70cm
5m	61.82,205.7lx	1905.88cm
6m	42.93,142.8lx	2287.05cm
7m	31.54,104.9lx	2668.23cm
8m	24.15,80.33lx	3049.40cm
9m	19.08,63.47lx	3430.58cm
10m	15.46,51.41lx	3811.75cm