

## 70W LED Semi-Cutoff Wall Pack



### Features

- Lumileds LED, high luminous efficiency and long working life.
- High efficiency LED Driver, the wide range input voltage AC120-277V/277-480V.
- Die Cast aluminium cooling design, high quality and better cooling for LED  $T_j < 85^{\circ}\text{C}$ . Excellent
- Optics design, greatly improve the light utilization and evenness.

### Product Applications

LPT LED Semi-Cutoff Wall Pack series can be widely used in indoor or outdoor lighting (Wet location), like mechanical or electronic processing workshops, storage warehouses, steel mills, gas stations, toll booth, waiting rooms, the platforms of railway station, indoor stadiums.

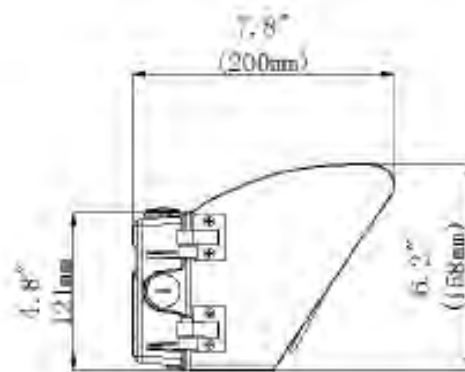
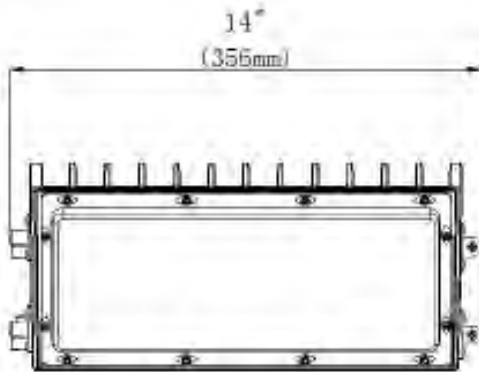


## Specifications

Unit : inch(mm)

### Structure Features

- Shell materials: Aluminum & PC.
- Finish: Dark Bronze/White
- Net weight : 3.5Kg (7.7 lbs)
- Product Size: 356mm\*200mm\*158mm
- Carton Size: 395mm\*225mm\*205mm

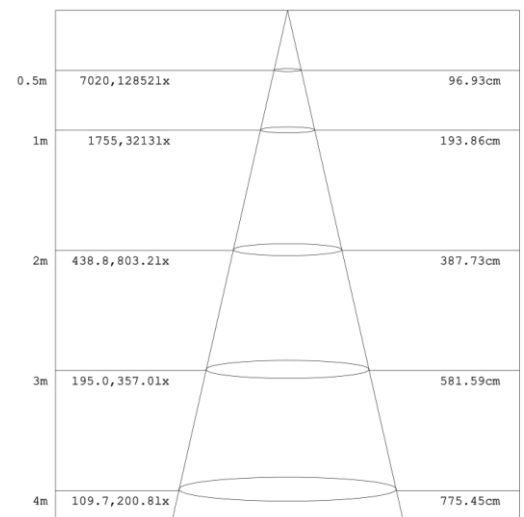
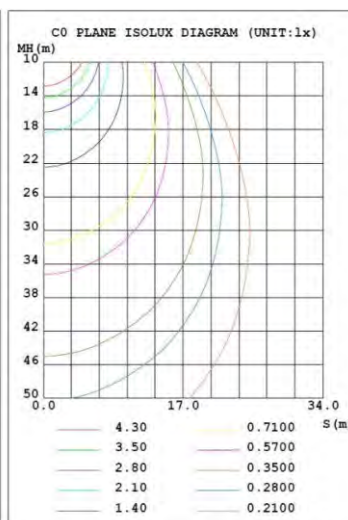
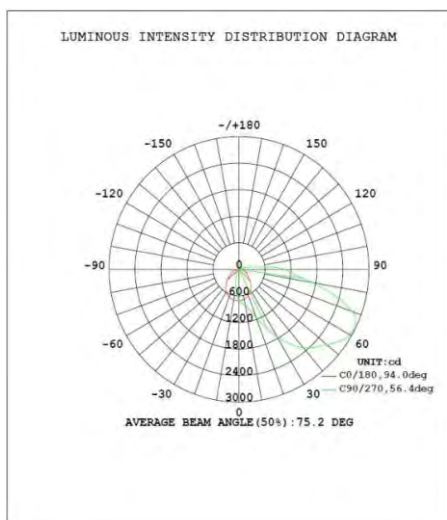


## Technical Parameters

### CODE: 90250-70

Power	70W	Lighting Angle	56°X94°
Input Voltage	AC120-277V/277-480V	LED Brightness Decay	<5%/6000 hrs
PF	>0.95	Working Life	>50000 hrs
Driver Efficiency	>90%	Working Temperature	-30 - +45°C
Luminous Flux	7750 Lm	Storage Temperature	-40 - +80°C
Color Temperature	4000K/5000K	Protection Level	Wet Location/IP65
CRI	Ra>70	Cable	Input Connect, No cable

## Photometry





**WARNING**

### PLEASE READ ALL INSTRUCTIONS BEFORE ATTEMPTING INSTALLATION

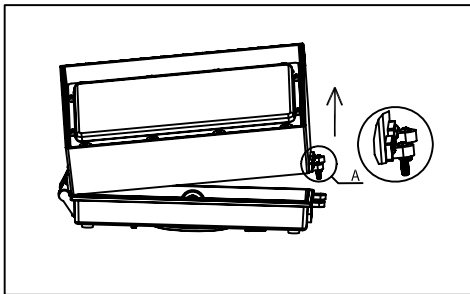
- To prevent personal injury or product damage only licensed electricians should install.
- To avoid electric shock or component damage disconnect power before attempting installation or servicing.
- This product must be installed in accordance with the national electric code (NEC) and all applicable federal, state and local electric codes and safety standards.
- Disconnect product and allow cooling prior to servicing.
- Any alteration or modification of this product is expressly forbidden as it may cause serious personal injury, death, property damage and/or product malfunction.
- To prevent product malfunction and/or electrical shock this product must be properly grounded.
- This luminaire is designed to operate in ambient temperatures ranging from  $-30^{\circ}\text{C}$  to  $45^{\circ}\text{C}$  and to be horizontally mounted with the LEDs facing down.
- Wall mount only.

## 1. Unpacking

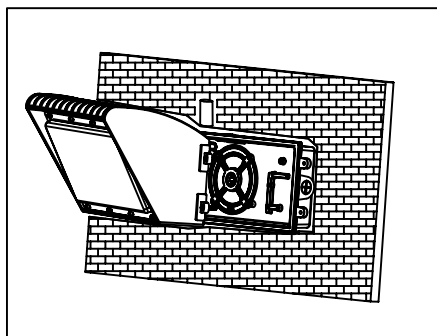
Thoroughly inspect the fixture for freight damage. Freight damage should be reported to the delivery carrier.

## 2. Installation

- 1) . Take off the screw of the heat sink and take off the front lid carefully from the back.  
The angle between the front cap and the back cap should be 0-45 degrees.



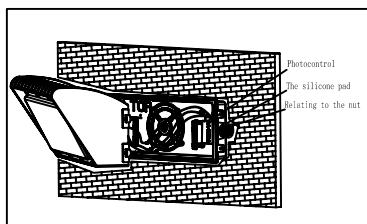
- 3). Connect wire A with wire C (The black one is L, white one is N, and the yellow one is ground wire), installing the front cap .



## 3. Installation of the photocell

Photocell input voltage range 120V or 277V, 60HZ,

- 1). Pick a  $\frac{1}{2}$ " cap of either side of the product and install the photocell according to the picture.

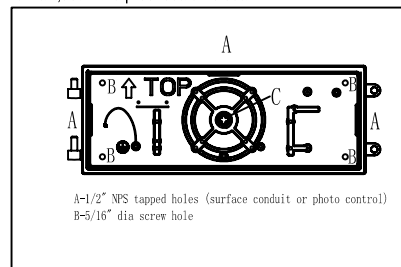


## 4. Checking

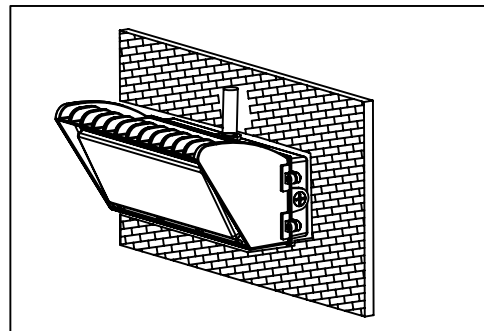
- 1). Does all the wires connected in a correct way as the pictures below show?
- 2). Is the ground lead installed appropriately?
- 3). make sure the photocell function well.

- 2) . A: After determining a place to put a conductor, take off the  $\frac{1}{2}$ " cap and make a hole according to the example (B). Fix it on the wall with an appropriate screw. (Please use glue to block the hole to prevent water leakage. )

- 2) . B: When installing the junction box, take off the  $\frac{1}{2}$ " cap of the C wire in the middle. This product supports standard 3  $\frac{1}{4}$ " and 4" junction box. After installing the back cap on the wall ,use waterproof sealer to seal it.



- 4). Make sure all wires are connected correctly, and lock up with the screw.



- 2). complete the photocell system after installing the photocell.

