

**BEE ALL YOU
CAN BEE!**

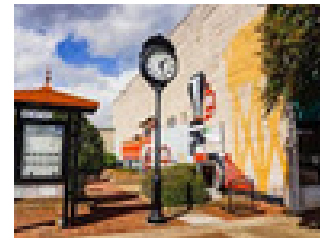
**miles for wellness
challenge 31**

CHALLENGE RUNS:
march 10 - may 4

POINTS OF INTEREST

1 Clover, South Carolina

Clover is a town in York County, South Carolina, United States. It is located in the greater Charlotte metropolitan area. As of 2020, the population was at 6,671 within the town limits. Clover is twinned with the Northern Irish town of Larne on County Antrim's East Coast.



2 Sunshine, North Carolina

Sunshine, North Carolina is located in Rutherford County. It is a populated place within the Township of Logan Store, a minor civil division of the county. The total population is about 5,562 with about 56 people per square mile.



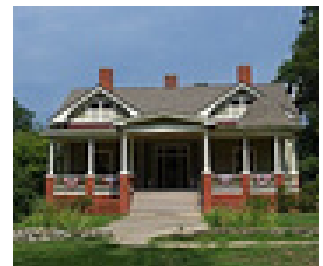
3 Daisy, Georgia

Daisy is a city in Evans County, Georgia. The population was 159 in 2020. It emerged as a prosperous trade center after the railroad came through in 1890. In recent years, citizens have banded together to restore several buildings along the main street and now the setting appears much like a photo from the past.



4 Verbena, Alabama

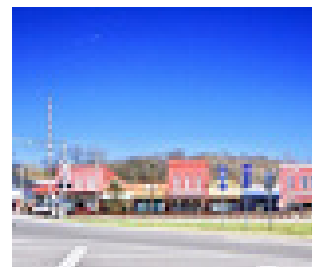
Verbena, also known as Summerfield, is an unincorporated community in southeastern Chilton County, Alabama. It developed as a popular resort location for the more affluent citizenry of Montgomery during yellow fever outbreaks in the late 19th century.



MILES FOR WELLNESS CHALLENGE 31 POINTS OF INTEREST

5 Bugscuffle, Tennessee

Bugscuffle is a populated place located within the Commissioner District 1, a minor civil division of Bedford County, Tennessee. It is a rural area south of Wartrace, which is a hub of the Tennessee Walking Horse industry.



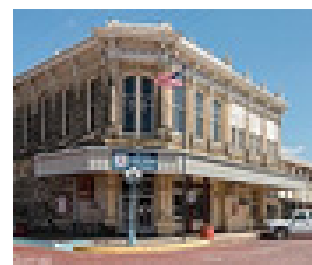
6 Beebe, Arkansas

Beebe is a city in White County, Arkansas. The population was 8,437 at the 2020 US Census, making it the second most populous in the county. It made international news in early January 2011 following the death of more than 3,000 red-winged blackbirds and European starlings over the community.



7 Honey Grove, Texas

Honey Grove is a city in Fannin County, Texas that bills itself as "The Sweetest Town in Texas." Davy Crockett discovered the area when he camped there on his way to join the Texas Army at San Antonio in 1836. In letters he told of a place with an abundance of honey-filled trees, hence the town's name.



8 Beeville, Texas

Beeville, located in Bee County, Texas is the 207th-largest city in the state with a population of 13,543 in 2020. Gutzon Borglum, the sculptor of Mount Rushmore, and his son Lincoln, lived there while Rushmore was being sculpted.



9 Bumble Bee, Arizona

Bumble Bee is a ghost town in the Bradshaw Mountains of Yavapai County in Arizona. It is named for nearby Bumble Bee Creek, and the townsite area is commonly used by RV campers in winter. The name comes from early travelers' claims that the indigenous people in the area were as "thick as bumblebees."



MILES FOR WELLNESS CHALLENGE 31 POINTS OF INTEREST

10 Lemon Grove, California

Lemon Grove is a city in San Diego County, California. The population was 27,627 at the 2020 census, up from 25,320 at the 2010 census. The town boasts a lemon sculpture that weighs some 3,000 pounds and is approximately 10 feet long and six feet wide.



11 Cloverdale, California

Cloverdale is a city in Sonoma County, California. It is both the westernmost and the northernmost city in the San Francisco Bay area. The San Francisco and North Pacific Railroad reached the area in 1872. The Cloverdale Rancheria of Pomo Indians of California is headquartered there.



12 Forest Grove, Oregon

Forest Grove is a city in Washington County, Oregon, 25 miles west of Portland. Originally a small farm town, it is now primarily a commuter town for the Portland metro area. Settled in the 1840s, the town was platted in 1850, then incorporated in 1872, making it the first city in Washington County.



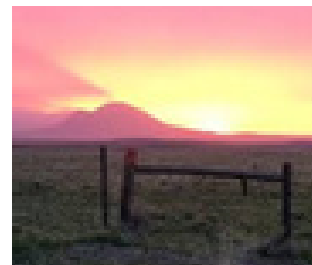
13 Sun Valley, Idaho

Sun Valley is a resort town in Idaho. It's known for Sun Valley resort's ski areas at Bald Mountain and nearby Dollar Mountain. In summer, the resort has miles of mountain trails, equestrian routes and wildflower-filled meadows.



14 Sunburst, Montana

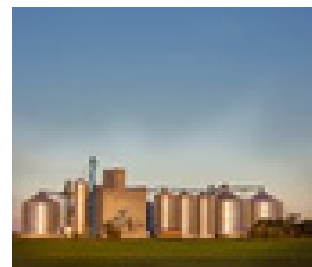
Sunburst has its origins as a farming and ranching community and later saw significant population growth after oil development occurred in the 1920s. It is a town in Toole County, Montana with a population of 333 as of 2020.



MILES FOR WELLNESS CHALLENGE 31 POINTS OF INTEREST

15 Honeyford, North Dakota

An unincorporated community in eastern Grand Forks County, North Dakota, Honeyford began in 1887 as a Northern Pacific Railway station. Today, most of the businesses in town have closed or moved to nearby Gilby. The town's last house caught fire in October 2011 and was deemed a total loss.



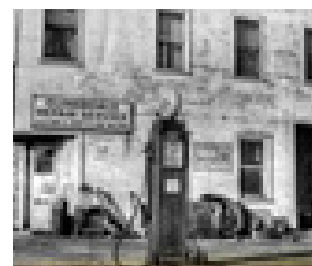
16 Beebeetown, Iowa

Beebeetown is an unincorporated town in Harrison County, Iowa. It was founded in 1880 and had a population of just 50 in 1940. It is home to the Twisted Tail Restaurant, a diner that won the 2020 Iowa Cattlemen Competition burger competition.



17 Cloverdale, Illinois

Cloverdale is an unincorporated community in Bloomingdale Township, DuPage County, Illinois. From the late 1880s, it was a milk stop on the Illinois Central Gulf railroad, and during the early 1900s, it was a stop on the Chicago, Dubuque, Sioux City and Omaha line of the Illinois Central Railroad.



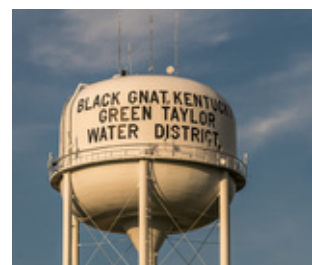
18 Terre Haute, Indiana

Located along the Wabash River, Terre Haute, Indiana is one of the largest cities in the Wabash Valley and is known as the Queen City of the Wabash. It was originally claimed by the British and French and the highlands were considered the border between Canada and Louisiana.



19 Black Gnat, Kentucky

Black Gnat is an unincorporated community in Green and Taylor Counties in Kentucky. The community's name originates from a pioneer incident. After the local schoolhouse was painted, it became covered in black gnats and it stuck as the name.



MILES FOR WELLNESS CHALLENGE 31 POINTS OF INTEREST

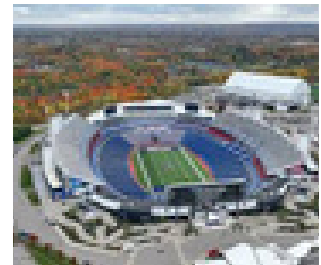
20 Fleatown, Ohio

Fleatown is an unincorporated community in Licking County, Ohio. It is located on Ohio State Route 13, 4.5 miles south of Newark. According to Frank K. Gallant, Fleatown may have been so named on account of its unsophisticated nature.



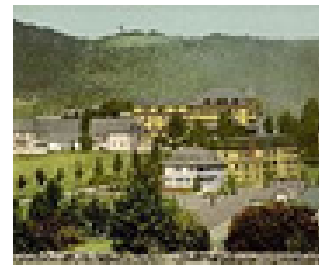
21 Orchard Park, New York

In 1803, Orchard Park, New York began when Didymus C. Kinney and wife Phebe purchased land upon which a migration of Quakers would settle. Today, it is one of the Southtowns of Erie County best known as the site of Highmark Stadium, home of the Buffalo Bills.



22 Sugar Hill, New Hampshire

Sugar Hill was incorporated in 1962, making it New Hampshire's newest town. The population was 647 at the 2020 census, an increase over 563 in 2010. The town overlooks the White Mountain National Forest.



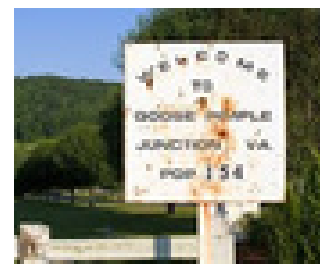
23 Bird-in-Hand, Pennsylvania

Bird-in-Hand is an unincorporated community and census-designated place in Lancaster County, Pennsylvania in East Lampeter Township. The area's first inhabitants were Native American Shawnee and Susquehannock people. The earliest European settlers were Quakers and Swiss Mennonites.



24 Goose Pimple Junction, Virginia

Goose Pimple Junction is an unincorporated community in Washington County, Virginia. It was so named when the domestic disputes of a couple in town were loud enough to give a neighbor "goose pimples." Its road signs are a popular visitor attraction because of the unusual name.



MILES FOR WELLNESS CHALLENGE 31 POINTS OF INTEREST

25 Shoofly, North Carolina

The neighborhood of Shoofly is located in Granville County in North Carolina. Like most early counties on the eastern side of the early North Carolina colony, Virginia farmers and their families settled in the area where they concentrated on tobacco as a commodity crop.

