

## University of California THELMA HANSEN SYMPOSIUM

### TREES TO THE RESCUE: SOLUTIONS FOR CLIMATE CHANGE



You are invited to a free webinar series entitled “**Trees to the Rescue: Solutions for Climate Change**”, sponsored by the University of California Thelma Hansen Fund.

The Zoom webinars will be held on **Tuesday-Thursday May 14-16, 2024 from 4:00-5:30 pm** and aim to increase our understanding of the role of trees in mitigating climate change, how to plant the right trees and keep them healthy in urban environments, and challenges of increasing the number of trees at the local level. The program is listed below. To register, go to: [LINK](#)

#### **Tuesday, May 14: Trees as a Tool for Climate Change Mitigation and Resilience**

4:00 pm *Welcome*—Annemiek Schilder, PhD, Director Hansen Agricultural Research and Extension Center

4:05 pm *Opening Remarks*—Matt LaVere, Ventura County Supervisor District 1

4:10 pm *Improving Outcomes of Tree Growing and Forest Restoration Efforts*—Karen Holl, PhD, Professor of Environmental Studies, UC Santa Cruz

4:50 pm *Climate Resilience through Urban Greening*—Edith de Guzman, PhD, Cooperative Extension Specialist, Water Equity and Adaptation Policy, UCLA

5:30 pm *Closing*—Annemiek Schilder

#### **Wednesday, May 15: Optimizing Tree Survival in a Changing Climate**

4:00 pm *Welcome*—Emma Volk, Production Horticulture Advisor, UCCE Ventura and Santa Barbara Counties

4:05 pm *Cooling Urban Heat Islands with Climate-Resilient Trees*—Janet Hartin, Environmental Horticulture Advisor, UCCE Los Angeles and San Bernardino Counties

4:30 pm *Keeping Trees Healthy from Sapling to Maturity*—James Downer, PhD, Environmental Horticulture & Plant Pathology Advisor Emeritus, UCCE Ventura County

5:05 pm *Dealing with the inevitable threat of exotic and invasive pests*—John Kabashima, PhD, Environmental Horticulture Advisor Emeritus, UCCE Orange County

5:30 pm *Closing*— Emma Volk

## Thursday, May 16: Tree Advocacy and Planning at the Local Level

4:00 pm *Welcome*—Julie Clark, Natural Resources Community Education Specialist, UCCE Ventura County

4:05 pm *Native Tree Restoration with Partners and the Public*—Joey Algiers, Restoration Ecologist, Santa Monica Mountains National Recreation Area

4:30 pm *Panel Discussion (Joey Algiers, moderator)*:

- Joey Algiers, Santa Monica Mountains National Recreation Area
- Mireille Vargas, County of Ventura Sustainability Division
- Mikaela Randolph, Green Schools America
- Jan Scow, Registered Consulting Arborist, Ojai Valley
- Max Young, Ventura Regional Fire Safe Council
- Hannah 'Gil' Lester, TreePeople

5:30 pm *Closing*— Julie Clark

## Speakers

**Matt LaVere** has been County Supervisor for Ventura County District 1 since 2020. He was Mayor of Ventura from 2018-2020 and served on the Ventura City Council from 2016-2020, supporting economic development, affordable housing, environmental initiatives, and homeless services. Matt grew up in Ventura County and has a BS degree in Law from Pepperdine University, working as a lawyer in private practice since 2006. One of Matt's top priorities is protecting and enhancing our beautiful County open space and community parks, while creating a sustainable community that future generations will be proud to call home.



**Dr. Karen Holl** is a Professor of Environmental Studies at the University of California, Santa Cruz. Her research focuses on understanding how local and landscape scale processes affect ecosystem recovery from human disturbance and using this information to restore damaged ecosystems. Her current research focuses on rain forests in Latin America and chaparral, grassland and riparian systems in California. She teaches courses in restoration ecology, conservation biology, and environmental problem solving. She is a Fellow of the California Academy of Sciences and the Ecological Society of America. Her book *"Primer of Ecological Restoration"* was published by Island Press in 2020.



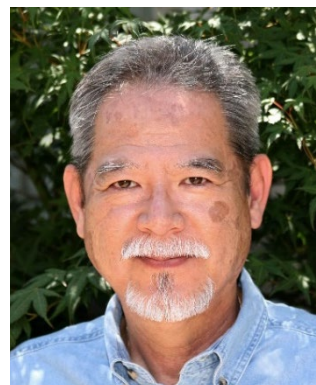
**Dr. Edith de Guzman** is a Cooperative Extension Specialist at UCLA in Water Equity and Adaptation Policy. She works with diverse audiences to understand and address the impacts of climate change in underrepresented communities. Her work investigates best practices for the sustainable transformation of the Los Angeles region and beyond, and has included research and demonstration projects as well as public policy and planning in the areas of water management, climate adaptation, heat mitigation, and urban forestry. From 2014 to 2020, Edith served as Director of Research at the Los Angeles-based nonprofit organization TreePeople.

**Janet Hartin** is a UC Cooperative Extension Advisor in Environmental Horticulture for landscape ornamentals in Los Angeles and San Bernardino counties. Janet conducts applied research and extends knowledge in the area of sustainable landscaping. She focuses on water conservation and minimum irrigation, water quality protection, green waste use, and low-maintenance, pest-resistant landscapes. Janet regularly conducts workshops and seminars for public and private landscapers, irrigation industry personnel, arborists, water district personnel, and others employed in the green industry and associated industries.



**Dr. James Downer** is a UC Cooperative Extension Advisor Emeritus in Environmental Horticulture and Plant Pathology in Ventura County. He holds a Ph.D. in Plant Pathology from UC Riverside and has 38 years of experience in horticulture and plant pathology. His research focuses on diseases of shade trees and other landscape plants as well as cultural practices to maintain landscape plants, especially trees. He also worked on mulch, soil microbiology and disease suppression in mulched soils. He officially retired in 2023 but is still involved in research. He recently published a book “Botany for Arborists”, which covers taxonomy, anatomy, and physiology of trees in the landscape.

**Dr. John Kabashima** is a UC Cooperative Extension Advisor Emeritus in Environmental Horticulture. He has a PhD in Entomology from UC Riverside and worked for 28 years supporting the nursery and landscape industry and homeowners in Orange and Los Angeles counties before retiring in 2015. He studied the management of insects, diseases and weeds in horticulture production systems, biological control of exotic pests, and water-related problems in landscapes, golf courses, nurseries, municipalities and watersheds. He loves using his knowledge and skills to solve problems facing the urban, agricultural, and natural resources of California.



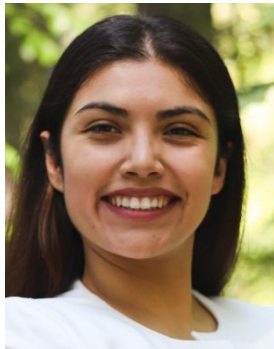




**Joey Algiers** has 17 years of experience working as a National Park Service Restoration Ecologist for the Santa Monica Mountains National Recreation Area, leading the restoration of damaged and degraded natural areas. This includes returning rare and critical habitat through the rebuilding of native plant communities, and overseeing the invasive plant control program, including weed treatments of ecologically damaging species. Joey also works with the park's native plant nursery where plants are grown for restoration, education, research, and conservation. Joey manages, trains and educates technicians, students, partners, and the public in restoration ecology practice and theory.

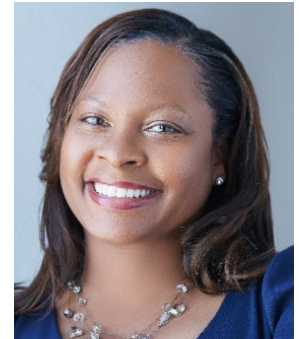
## Panelists

**Joey Algiers** (see above)



**Mireille Vargas** joined the County of Ventura Sustainability Division in late 2021 as part of the Climate Action Plan team. She works on implementing the County of Ventura's Climate Action Plan to reduce the region's greenhouse gas emissions and adapt to climate change. She holds BS and MS degree in Earth Systems from Stanford University. She is the coordinator of the Ventura County Tree Coalition, a network of community organizations, nonprofits, land trusts, municipalities, the UCCE and like-minded groups dedicated to preserving and enhancing Ventura County's tree canopy.

**Mikaela Randolph** is Associate Director of Regional Programs with Green Schoolyards America. She was born and raised in Los Angeles, CA, and holds dual BS degrees in Urban Studies and Communication Studies from Loyola Marymount University and a MS in Public Policy from the University of Southern California, where she also is an adjunct professor. She supports school district administrators in designing, building, maintaining, and using schoolyard forests, with a focus on frontline communities dealing with the effects of climate change such as extreme heat, extreme flooding, and drought.



**Jan Scow** is a Registered Consulting Arborist practicing in Southern California for the past 30 years. He has a BA in Environmental Studies from UCLA. Jan was a Director of the California Urban Forests Council from 1999 to 2005, a Director of the American Society of Consulting Arborists from 2011 to 2015 and is an active member of the California Native Plant Society, the California Oak Foundation, and the Sierra Club. He currently lives in Ojai and serves on the Board of Directors of Ojai Trees, a local tree advocacy non-profit organization.



**Max Young** is the Head of Wildfire Safety at Ventura Regional Fire Safe Council, where he spearheads initiatives to prepare communities for wildfires. With his background as a Consulting Utility Forester, a Southern California Edison contractor in Ventura and Santa Barbara Counties, and Conservationist 1 at the Camarillo Fire Center for the California Conservation Corps, Max is well-versed in wildfire mitigation strategies. At VRFSC, he takes the lead on our home hardening initiatives as well as our chipping and vegetation management, ensuring the safety and resilience of Ventura County's communities.

**Hannah 'Gil' Lester** is a Forest Health Community Organizer for TreePeople, a non-profit organization in Beverly Hills, CA. She educates communities in Southern California about threats to our native flora, and mobilizes efforts to restore local habitat. Prior to this, she served communities through her roles in outdoor education, wildfire mitigation, and disaster response and recovery. Having experience in responding to natural disasters, she is keenly aware of the impacts of climate change on our ecosystems, as well as the value of green infrastructure in mitigating these impacts.

