



# COOLING FANS



106703



106725



106730



106708



\*CURRENTLY UNAVAILABLE

FAN AVAILABLE FOR PURCHASE, PICTURE CURRENTLY UNAVAILABLE

106738

## 40 mm (1.57")

CT PART#	MPN	DESCRIPTION	I Need
106703	CC4010H12B -2510 -3P	40MM x 40MM x 10MM, 12VDC, 3 WIRE WITH 2510 -3P CONNECTOR, 6000 RPM, BALL BEARING, 6.2CFM	
106725	840556102212	40MM x 40MM x 10MM, 12VDC, HIGH SPEED DUAL BALL BEARING, 3 PIN FAN #R124010BU, WMS BB2 CPU	
106730	KDE1204PFV3	40MM x 40MM x 10MM, 12VDC, 3 WIRE, .08WATT	
106708	CS1245 -A1033AB4L	40MM x 40MM x 10MM, 12VDC, 3 WIRE, ARISTOCRAT MK6 MPU FAN W/ HEAT SINK	
106703	HA40101V4 -Q030 -G99 CC4010H12B -2510 -3P	40MM x 40MM x 10MM, 12VDC, 3 WIRE, AVP 625/660/3.0 CPU LITTLE, INNER, SUNOM BRAND	
106738	EFB0412HHA	40MM x 40MM x 10MM, BB2 NXT -2 CPU FAN WITH 2510 - 3 PIN CONNECTOR	



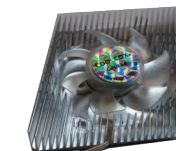
106724



106729



106731



106710

## 50 mm (1.97")

CT PART#	MPN	DESCRIPTION	I Need
106724	ME50100V1 -000U -A99	50MM x 50MM x 10MM, 5 VDC, 2 WIRE, 5200RPM, ME50100V1 -000U -A99	
106729	AD5012UB -D70 -LF	50MM x 50MM x 15MM, 12VDC, 5500 RPM, ULTRA HI SPEED	
106731	KDE1205PFB2 -8	50MM x 50MM x 10MM, 12VDC, 2 WIRE	
106710		51MM x 51MM x 13MM, 12VDC, W/ HEAT SINK & WIRE FOR ATI 9800 RADEON/SAPPHIRE PRO VIDEO CARD	
106747	MBA4412HF-A09	53MM x 53MM x 10MM, 12VDC, 0.2A, 2WIRE, 2 PIN	



106702



106706



106704



106712



106713



106715



106716

FAN AVAILABLE FOR PURCHASE, PICTURE CURRENTLY UNAVAILABLE

106737



106739

## 60 mm (2.36")

CT PART#	MPN	DESCRIPTION	I Need
106702	840556025191	60MM x 60MM x 15MM, 12 VDC, 21.83 CFM, BALL BEARING, 3 PIN LOW NOISE, 3000 RPM, 2.93 MM H20, FOR BB1 CPU	
106706	T127010BH	OPEN FRAME, 12VDC, .35A, FOR BALLY V22 GRAPHIC CARD FX1800, DY06010MMBPB	
106704	CC6015H12B -2510 -2P	60MM x 60MM x 15MM, 12VDC, 2 WIRE WITH 2510 -2P CONNECTOR, 4300RPM, BALL BEARING, 18.6CFM, NXT -2 CABINET FAN	
106712	CC6010H12B	60MM x 60MM x 10MM, 12VDC, 2 WIRE NO CONNECTOR, 4500RPM, BALL BEARING, 18.9CFM	
106713	CC6010H12B	60MM x 60MM x 10MM, 12VDC, 3 WIRE NO CONNECTOR, 4500RPM, BALL BEARING, 18.9CFM	
106715	259 -1752 -ND	60MM x 60MM x 15MM, 12VDC, BLOWER FOR KTL201MD, INNER FAN, COMES WITHOUT PLUG	
106716	603 -1026 -ND	60MM x 60MM x 10MM, 12VDC, 4800RPM, FOR KTL201MD, OUTER FAN WITHOUT PLUG, MODEL: EF-B0612HHA.	
106737	EUB0612VHB	60MM x 60MM x 15MM, 12VDC, BB2 NXT -2 CPU CASE FAN WITH 2510 - 2PIN CONNECTOR	
106739	CC6025H12D	60MM x 60MM x 25MM, 12VDC, 3 WIRE WITH NO CONNECTOR	



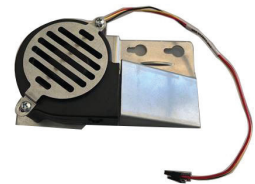
106711



106733



106714



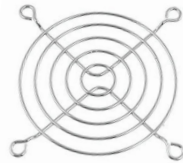
106736

70 mm (2.76")

CT PART#	MPN	DESCRIPTION	I Need
106711	BF7530H24D	75MM x 75MM x 30MM, 24VDC @ 0.27A, 3 WIRE [200mm LONG] WITH CONNECTOR, BLOWER	
106733	R127010BU	70MM x 70MM x 10MM, 12VDC, 0.45A, 3 WIRE, 3 PIN CONNECTOR FOR KP3 CPU	
106714	01 -80255 / GA8152V	76MM x 6MM, 2 WIRE, EXACT REPLACEMENT FOR GT 430 VERVE VIDEO CARD ATI 439038, ARISTOCRAT	
106736	6651 -1407547, REV 1	75MM x 75MM x 30MM, 24VDC @ 0.27A, 3 WIRE WITH CONNECTOR, FOR WMS BLADE	



106701



106709



106742



106726

80 mm (3.15")

CT PART#	MPN	DESCRIPTION	I Need
106701	47+183201001	DUAL 80MM PSU COOLING FAN, 24VDC, .21A, 32" WIRE, INTO SINGLE 2W/15P HARNESS, MODEL: AF-B0724HC	
106709	1G08004S	80MM FAN GRILL (SILVER)	
106742	CC8025H24D	80MM X 80MM X 25MM, 24VDC, 2 WIRE, NO CONNECTOR, BRUSHLESS FAN, REPLACEMENT FOR INNOVATIVE BP802524H, COOLCOX BRAND	
106726	F -8025H12BV	80MM X 80MM X 25MM, 24VDC, PT3, FOR UNI -750 POWER SUPPLY	
*	FD128025EB -N	80MM x 80MM x 25MM, 12VDC, 2 WIRE, FOR UNI -750 -1 POWER SUPPLY	



106728

90 mm (3.62")

CT PART#	MPN	DESCRIPTION	I Need
106728	3610KL -04W -B69 -E50	92MM X 92MM X 25MM, 12VDC, 3600RPM, 61.8 CFM, BRUSHLESS AXIAL FAN	



106727



\*CURRENTLY UNAVAILABLE

120 mm (4.69")

CT PART#	MPN	DESCRIPTION	I Need
106727	OD1225 -24HSS	120MM x 120MM x 25MM, 24VDC, 2200 RPM, 85CFM, BRUSHLESS AXIAL FAN	
*	OD1225 -24HSS	120MM X 120MM X 25MM, 24VDC, 2 WIRE, BALLY ALPHA 2 TRI -MAG POWER SUPPLY	

Commitment to Excellence.



**Kimberly Wilding**  
Senior Sales Representative  
West Coast Territory 1  
346-222-5761  
Kimberly.Wilding@CasinoTech.com

**Leslie Reyna**  
Sales Team Member  
Central Territory  
346-222-5751  
Leslie.Reyna@CasinoTech.com

**Jesse Urciel**  
Sales Team Member  
East Coast Territory  
702-996-8773  
Jesse.Urciel@CasinoTech.com

**Ed Wall**  
Sales Team Member  
West Coast Territory 2  
702-996-8775  
Ed.Wall@CasinoTech.com