

Gila NF 2024 Precipitation as of 0600 September 26, 2024

ERC 37 (+12)

Slaughter Mesa

Jan-Aug – 11.81"

Sep – 0.71"

ERC 34 (+9) Luna

Jan-Aug – 12.56"

Sep – 0.64"

ERC 40 (+15) Reserve

Jan-Aug – 12.37"

Sep – 0.86"

Pelona **ERC 42 (+12)**

Jan-Aug – 10.13"

Sep – 0.15"

Beaverhead **ERC 37 (+12)**

Jan-Aug – 12.66"

Sep – 0.39"

ERC 46 (+16) Mogollon

Jan-Aug – 11.34"

Sep – 1.05"

Gila Center **ERC 40 (+14)**

Jan-Aug – 12.97"

Sep – 0.87"

ERC 52 (+11)

Burro Mt

Jan-Aug – 10.72"

Sep – 0.11"

Gila NF 2000-2023
Historical Average
Precipitation

Jan - Aug = 10.42"

Sep = 1.97"

Sept 19-25 = 0.41"

Past 7 Days

Slaughter Mesa – 0.00

Luna – 0.00

Reserve – 0.00

Mogollon – 0.00

Pelona – 0.00

Beaverhead – 0.00

Gila Center – 0.00

Burro Mt – 0.00

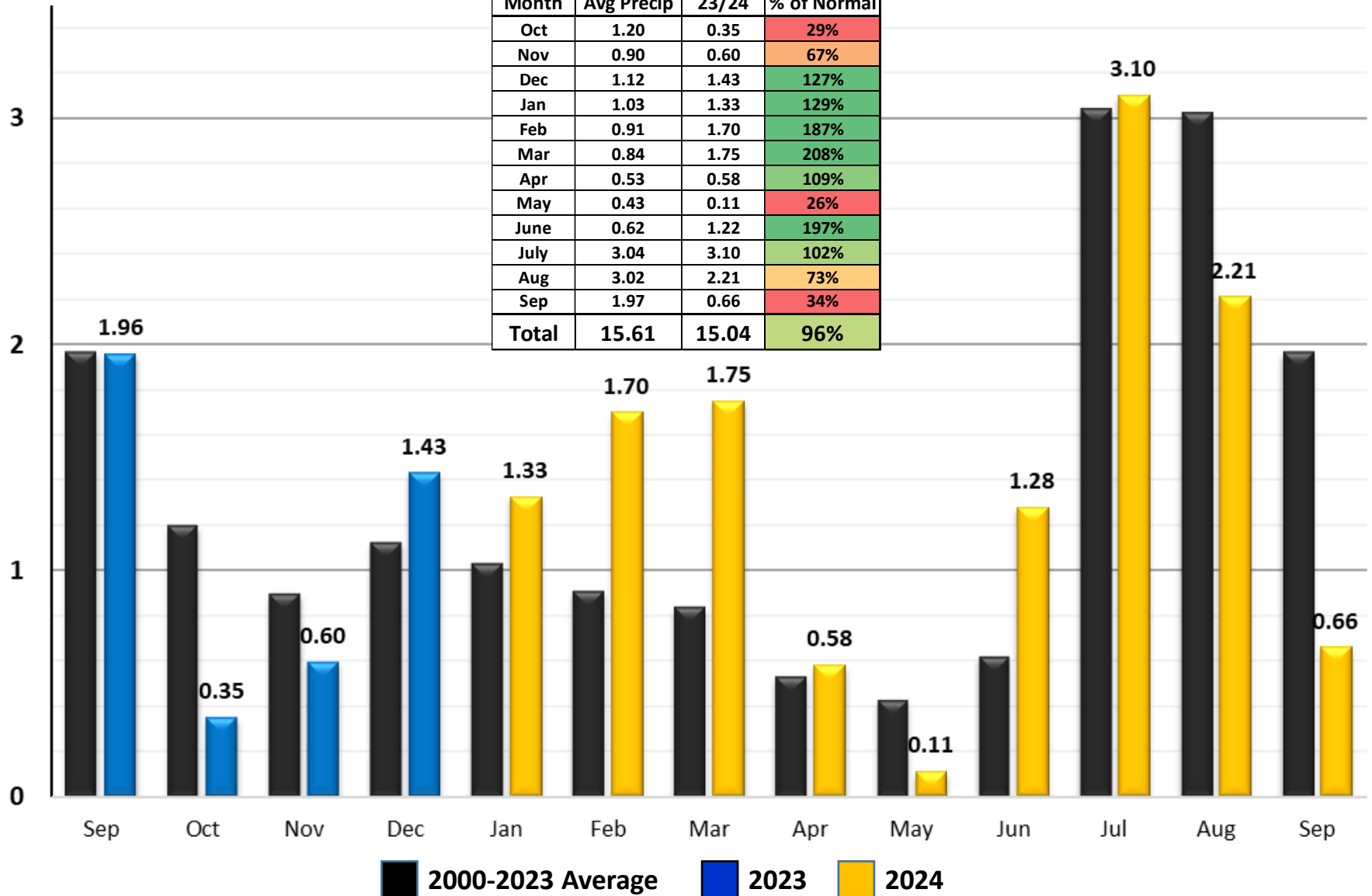
Gila NF Avg = 0.00

ERC as of 09/25/24 1400 Hours

Gila NF Precipitation - Historical Compared to 2023/2024

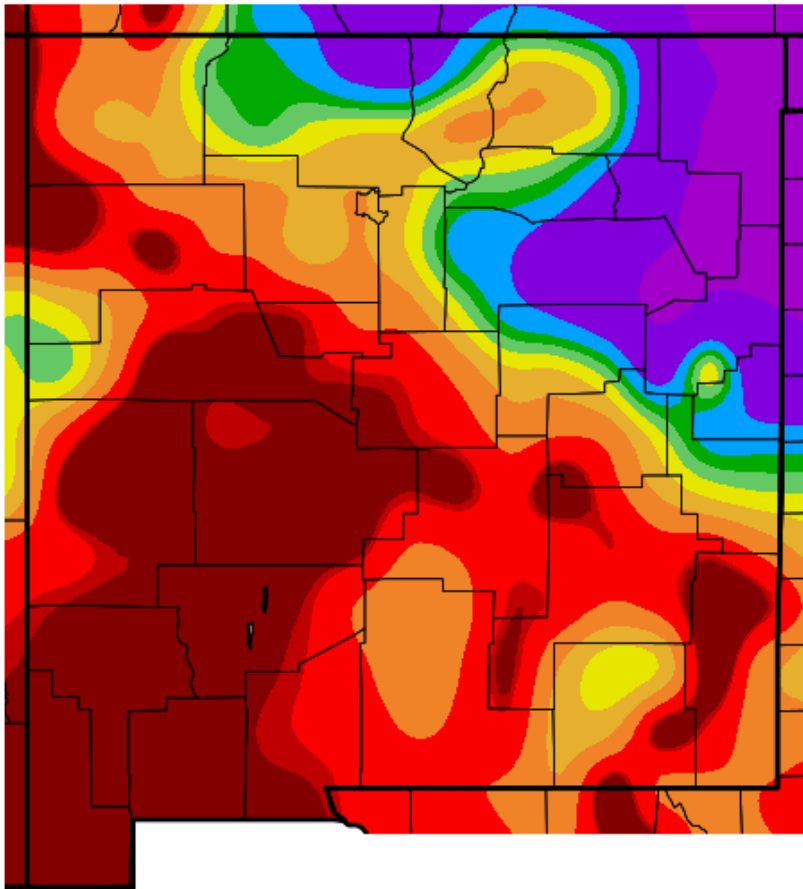
(All Gila NF RAWS Averaged as of 0600 September 26, 2024)

Month	Avg Precip	23/24	% of Normal
Oct	1.20	0.35	29%
Nov	0.90	0.60	67%
Dec	1.12	1.43	127%
Jan	1.03	1.33	129%
Feb	0.91	1.70	187%
Mar	0.84	1.75	208%
Apr	0.53	0.58	109%
May	0.43	0.11	26%
June	0.62	1.22	197%
July	3.04	3.10	102%
Aug	3.02	2.21	73%
Sep	1.97	0.66	34%
Total	15.61	15.04	96%



Past 7 Days

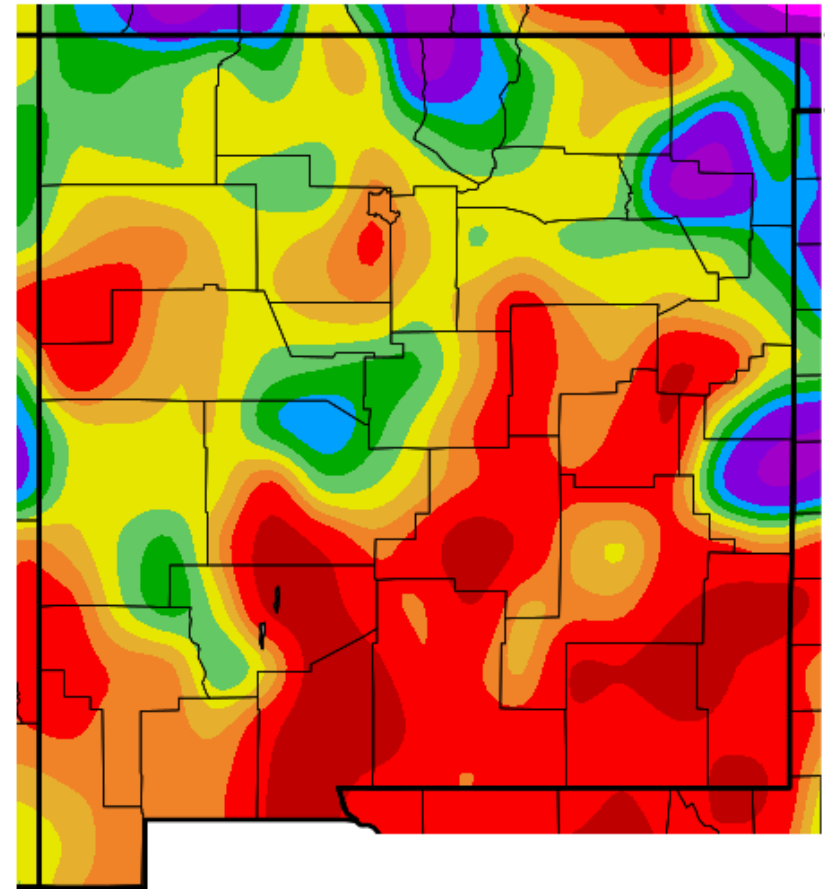
Percent of Average Precipitation (%)
9/18/2024 – 9/24/2024



Generated 9/25/2024 at WRCC using provisional data.
NOAA Regional Climate Centers

Past 3 Months

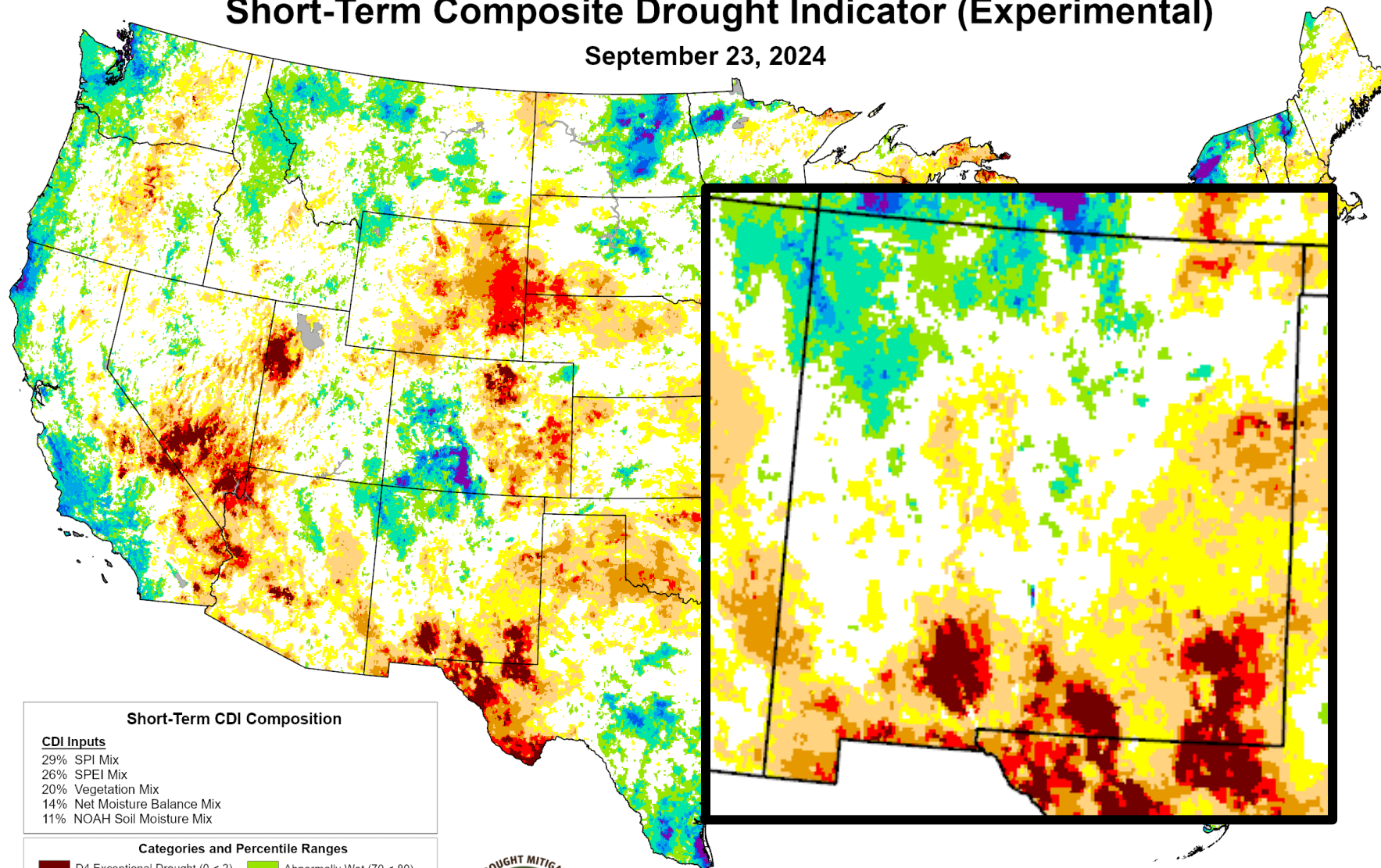
Percent of Average Precipitation (%)
6/27/2024 – 9/24/2024



Generated 9/25/2024 at WRCC using provisional data.
NOAA Regional Climate Centers

Short-Term Composite Drought Indicator (Experimental)

September 23, 2024



Short-Term CDI Composition

CDI Inputs

29% SPI Mix
26% SPEI Mix
20% Vegetation Mix
14% Net Moisture Balance Mix
11% NOAA Soil Moisture Mix

Categories and Percentile Ranges

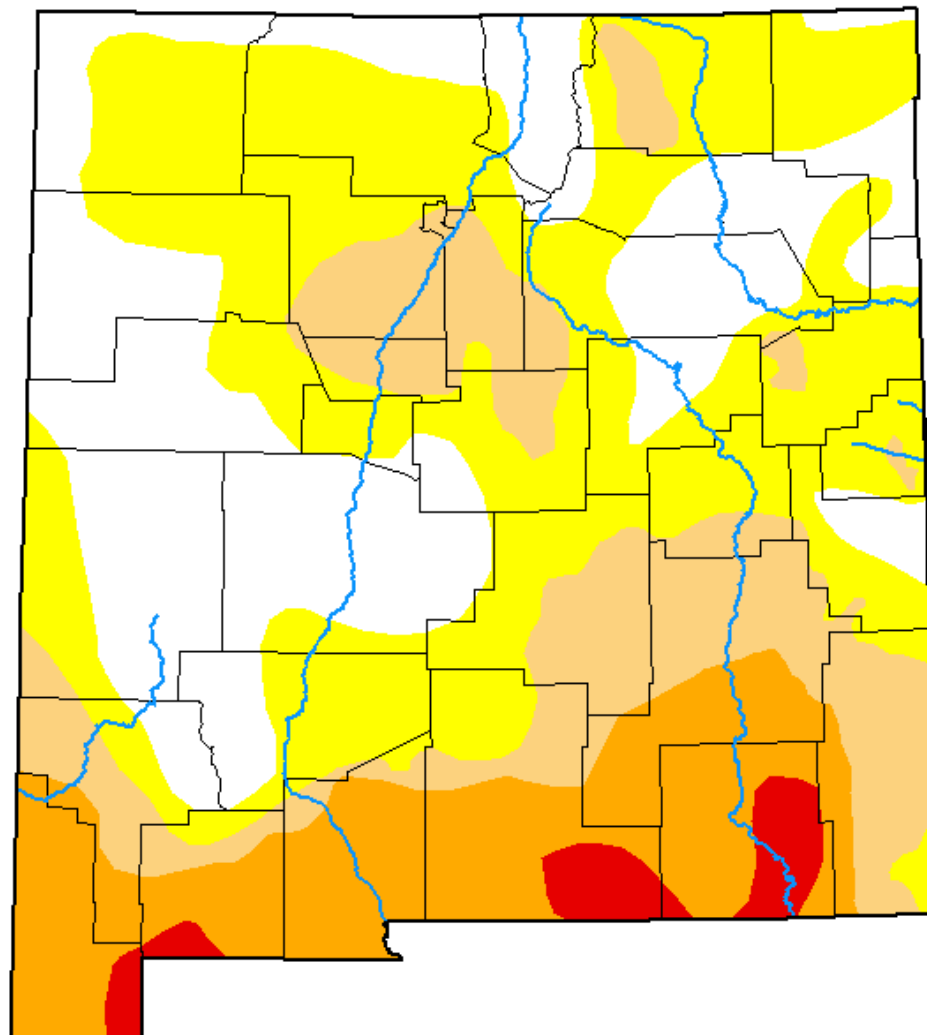
D4 Exceptional Drought (0 < 2)	Abnormally Wet (70 < 80)
D3 Extreme Drought (2 < 5)	Moderately Wet (80 < 90)
D2 Severe Drought (5 < 10)	Severely Wet (90 < 95)
D1 Moderate Drought (10 < 20)	Extremely Wet (95 < 98)
D0 Abnormally Dry (20 < 30)	Exceptionally Wet (98 - 100)
Near Normal (30 < 70)	No Data



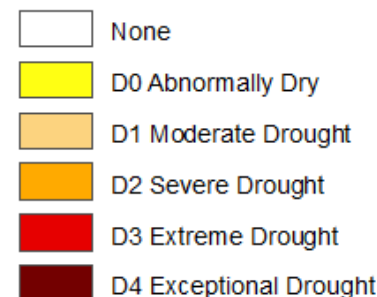
U.S. Drought Monitor New Mexico

September 24, 2024
(Released Thursday, Sep. 26, 2024)
Valid 8 a.m. EDT

No Change in SW NM Past 4 Weeks



Intensity:



The Drought Monitor focuses on broad-scale conditions. Local conditions may vary. For more information on the Drought Monitor, go to <https://droughtmonitor.unl.edu/About.aspx>

Author:

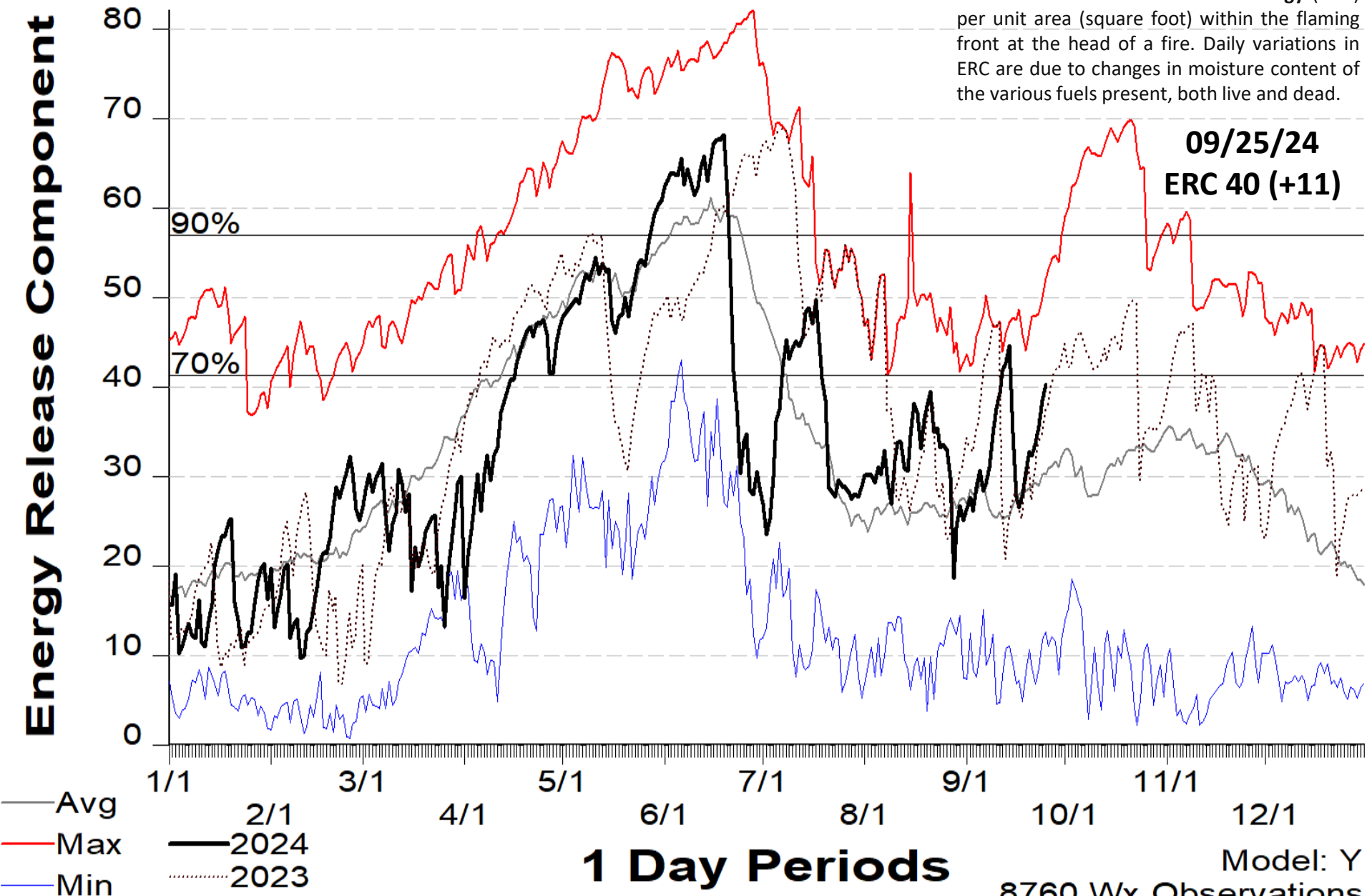
Brad Rippey
U.S. Department of Agriculture



droughtmonitor.unl.edu

The **energy release component** (ERC) is a number related to the available **energy** (BTU) per unit area (square foot) within the flaming front at the head of a fire. Daily variations in ERC are due to changes in moisture content of the various fuels present, both live and dead.

Energy Release Component

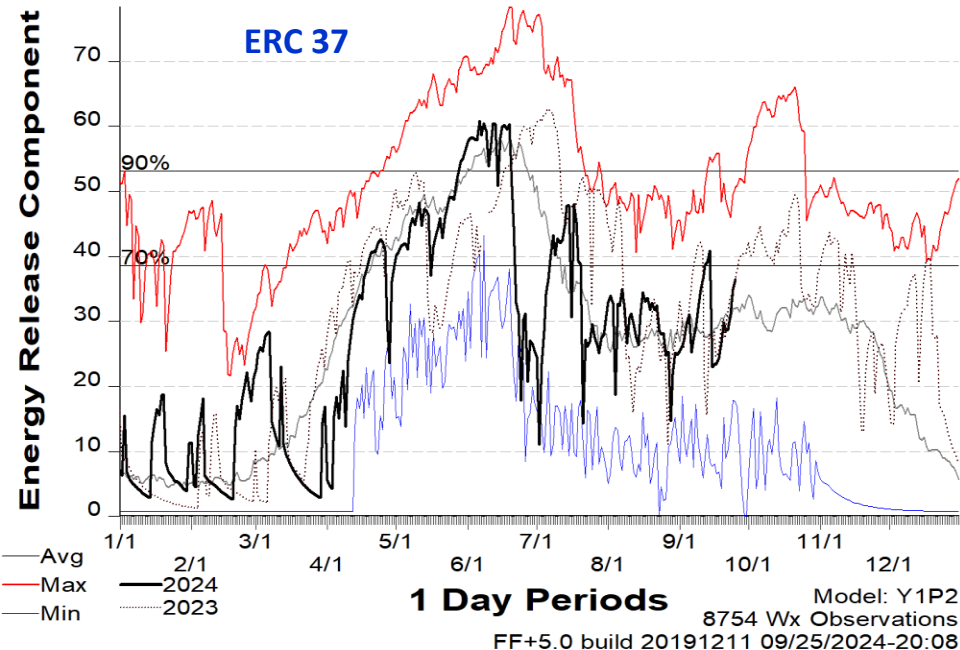


09/25/24
ERC 40 (+11)

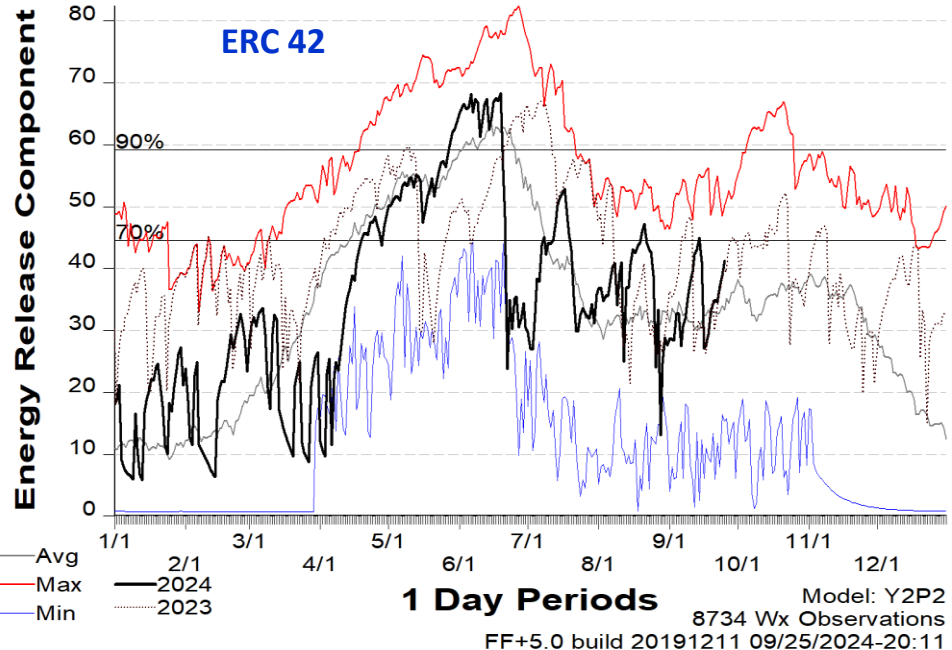
1 Day Periods

Model: Y
8760 Wx Observations

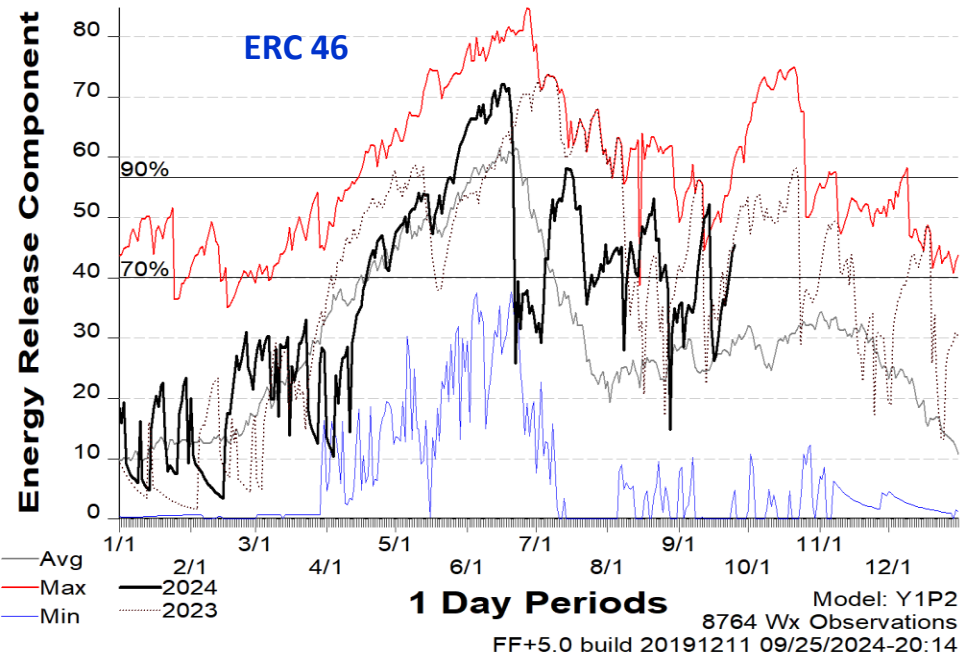
292008-SLAUGHTER MESA 2000 - 2023



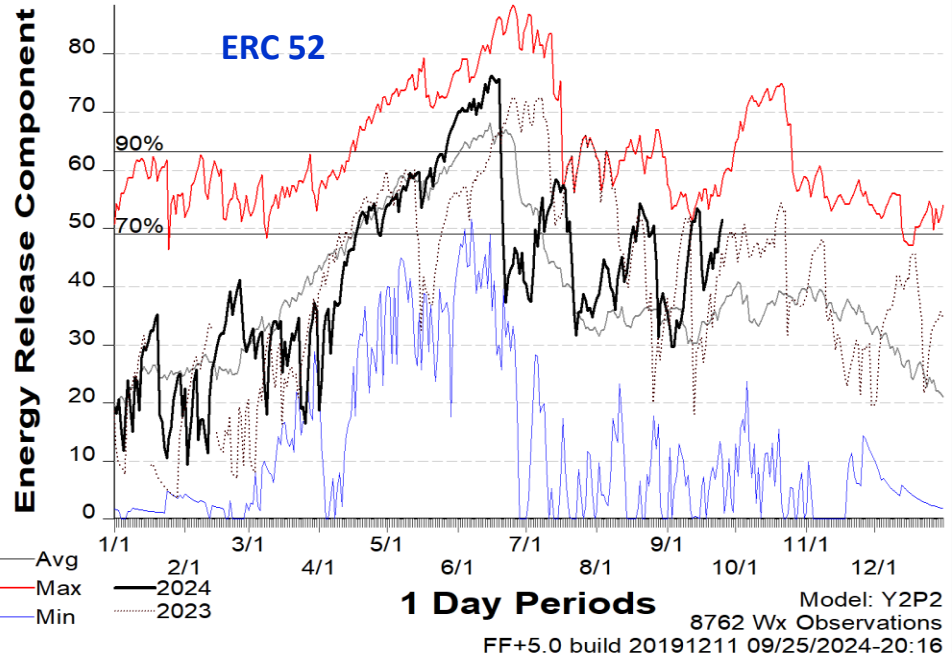
292009-PELONA 2000 - 2023



292013-MOGOLLON 2000 - 2023



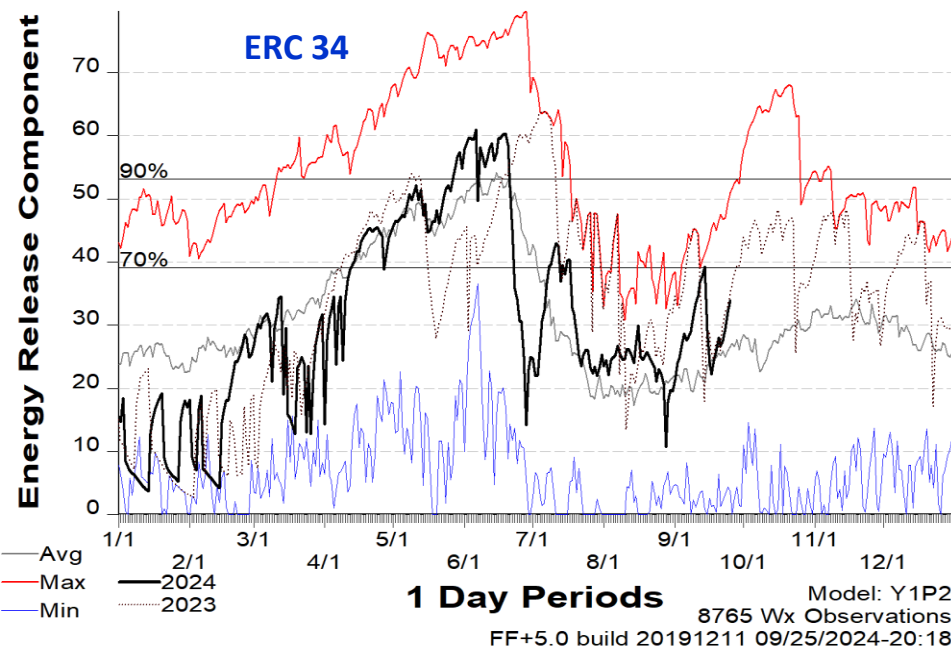
292504-BURRO MOUNTAIN 2000 - 2023



292004-LUNA 2000 - 2023

Energy Release Component

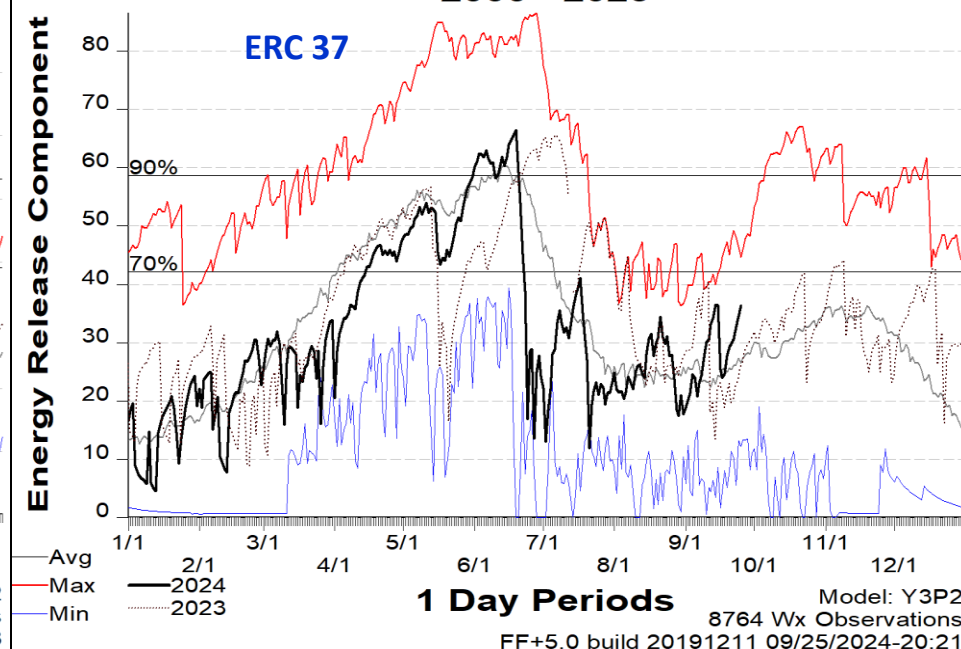
ERC 34



292001-BEAVERHEAD 2000 - 2023

Energy Release Component

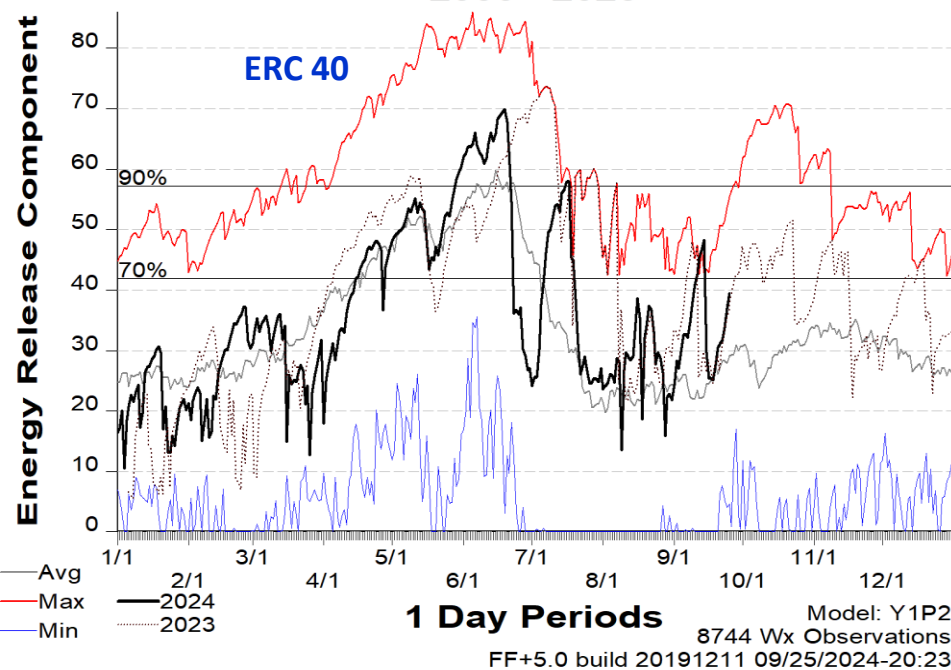
ERC 37



292005-RESERVE 2000 - 2023

Energy Release Component

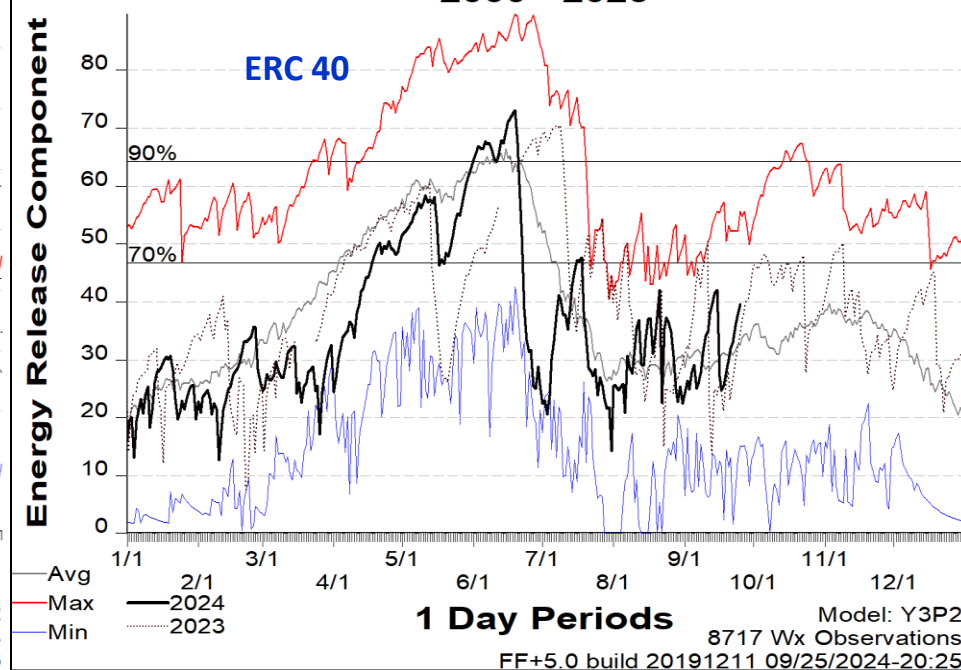
ERC 40



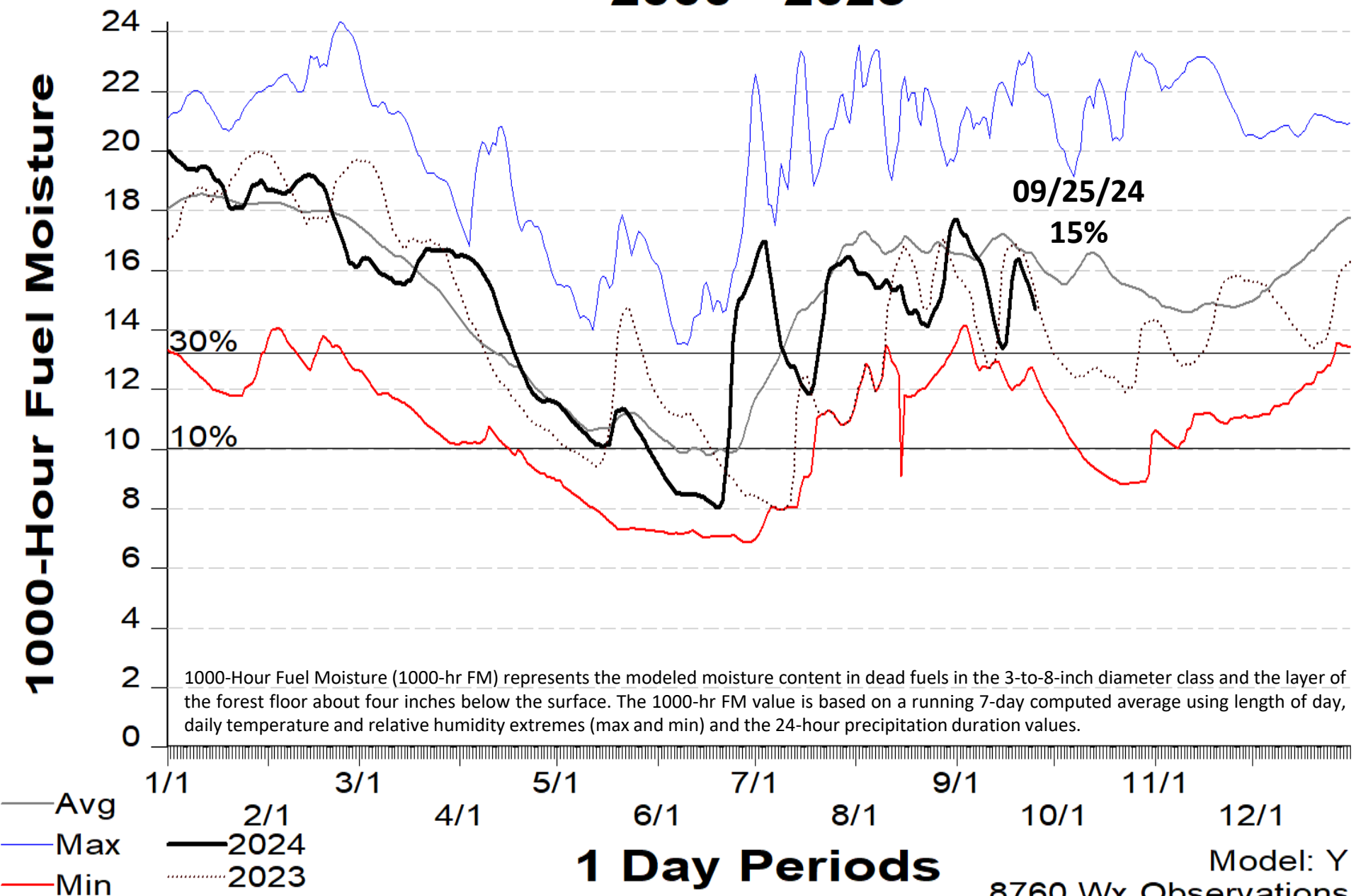
292011-GILA CENTER RAWS 2000 - 2023

Energy Release Component

ERC 40



SIG - Gila NF 2000 - 2023



ALL GILA NF RAWS

SIG - Gila NF 2000 - 2023

10-Hour Fuel Moisture

— Avg
— Max
— Min

2024

09/25/24
10%

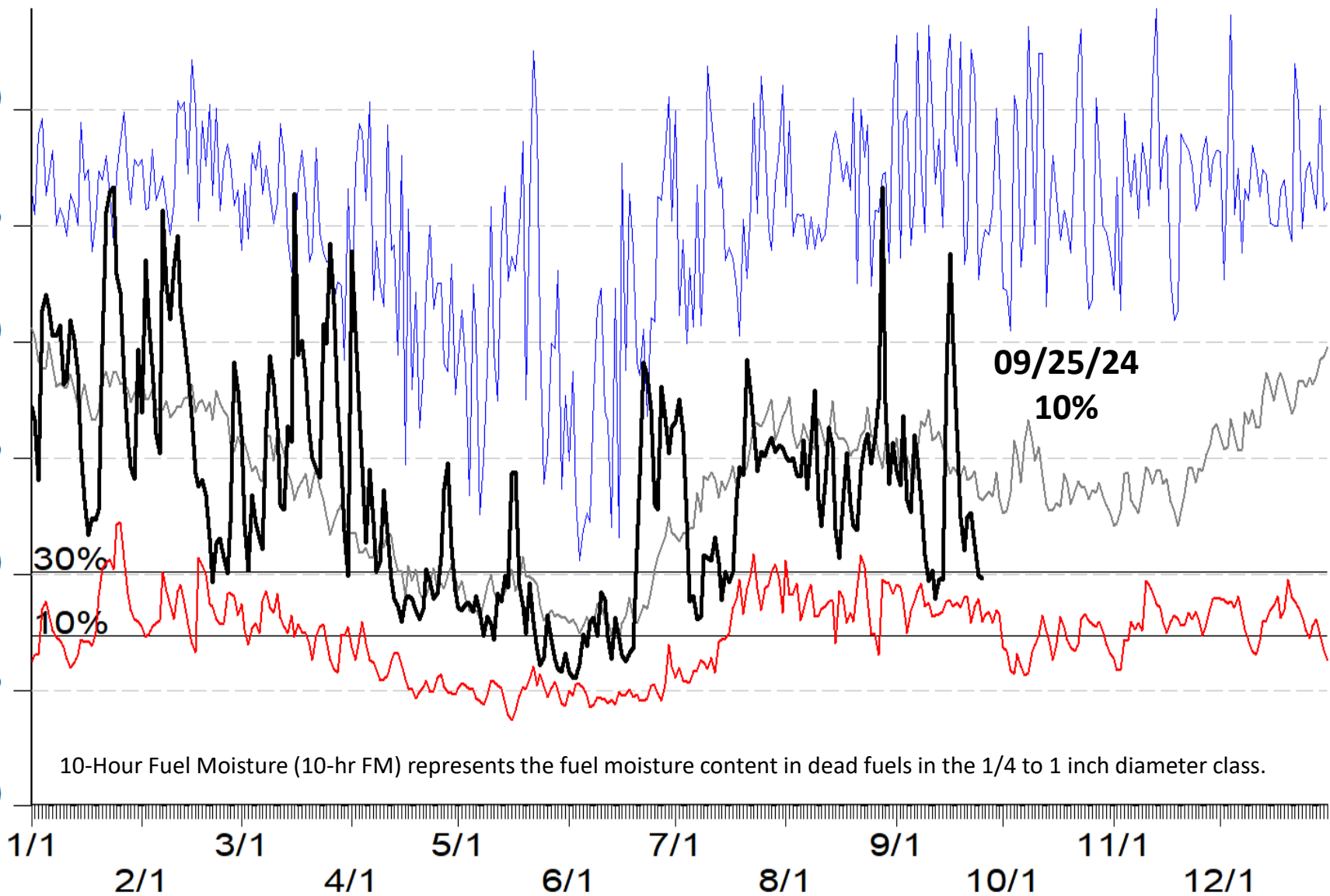
10-Hour Fuel Moisture (10-hr FM) represents the fuel moisture content in dead fuels in the 1/4 to 1 inch diameter class.

1 Day Periods

Model: Y

8760 Wx Observations

FF+5.0 build 20191211 09/26/2024-07:12












National Weather Service NEW MEXICO FIRE WEATHER ZONE 110 – 09262024 0458

DISCUSSION...










- Fire weather concerns are generally LOW.
- Today, high temperatures at 5-12 degrees above average. Min RH values 15-25% across the lowlands and 25-35% over the mountains above 7500ft.
- Winds will be breezy at 5-15 mph out of the southeast.
- Mixing heights will range from 6000 to 9000 feet AGL.
- Weak transport winds will lead to poor to fair smoke ventilation rates.
- This weekend expect hot and dry conditions with no precipitation chances.

NM Weather Zone 110		Sky Weather	0600 RH Recovery	Max Temp	Min RH	Wind Dir	Wind Speed	Prob of Precip	HAINES
26-Sep	Thu	Mostly Sunny	50-60% Ridges 80-100% Valley	78-92°	15-25%	S	5-10	0%	5
27-Sep	Fri	Mostly Sunny	45-55% Ridges 60-80% Valley	80-95°	12-22%	SE	5-10	0%	5
28-Sep	Sat	Mostly Sunny	35-55% Ridges 50-70% Valley	78-92°	14-24%	SE	8-15	0%	5










13 Miles W Pie Town NM Quemado NM

Today	Tonight	Friday	Friday Night	Saturday	Saturday Night	Sunday	Sunday Night	Monday
								
High: 84 °F	Low: 48 °F	High: 85 °F	Low: 52 °F	High: 84 °F	Low: 51 °F	High: 83 °F	Low: 50 °F	High: 84 °F
Sunny	Clear	Sunny	Partly Cloudy	Sunny	Partly Cloudy	Sunny	Partly Cloudy	Sunny

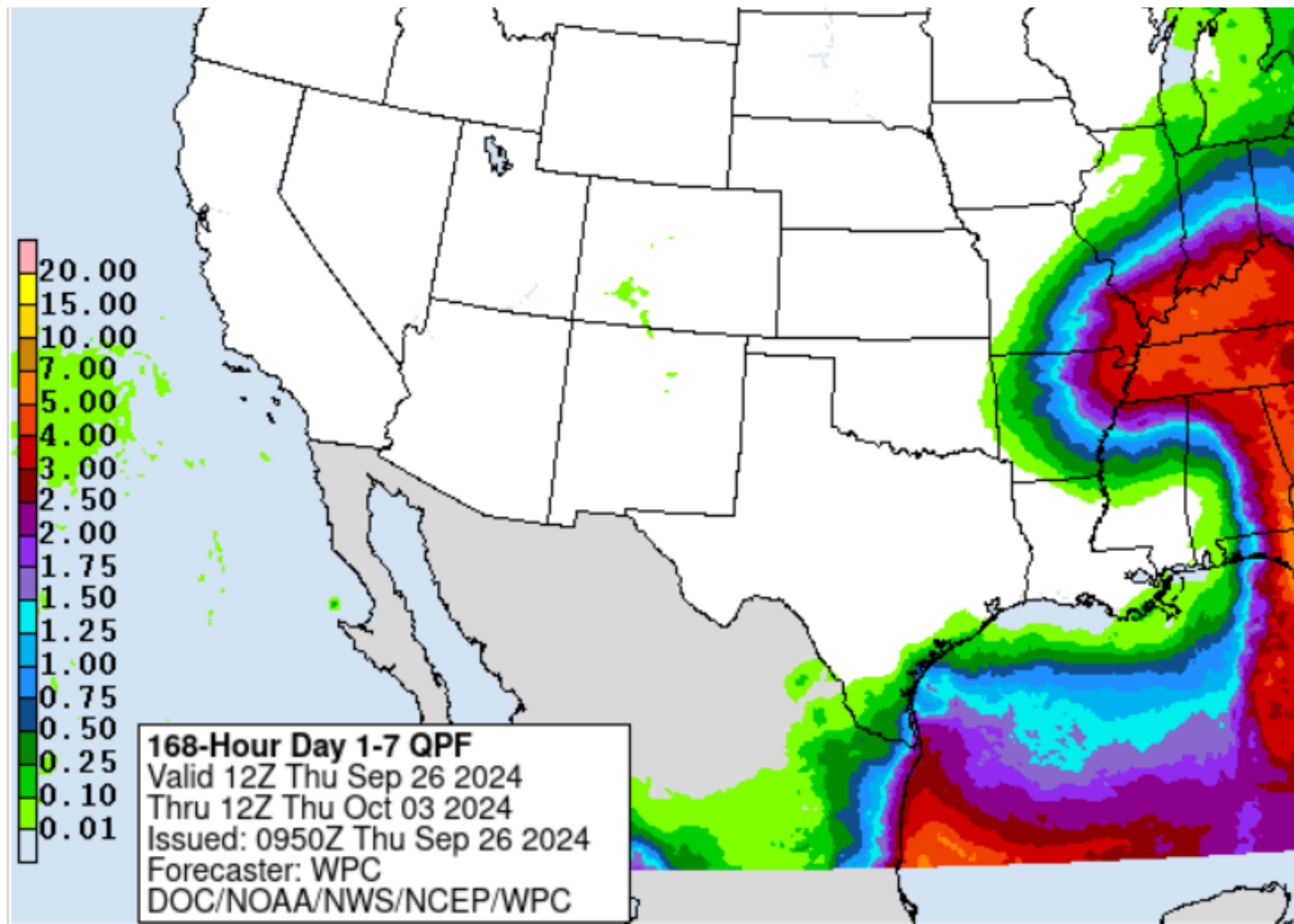
Reserve NM

Today	Tonight	Friday	Friday Night	Saturday	Saturday Night	Sunday	Sunday Night	Monday
								
High: 90 °F	Low: 46 °F	High: 93 °F	Low: 50 °F	High: 90 °F	Low: 47 °F	High: 89 °F	Low: 49 °F	High: 91 °F
Sunny	Clear	Sunny	Partly Cloudy	Sunny	Partly Cloudy	Sunny	Partly Cloudy	Sunny

Silver City NM

Today	Tonight	Friday	Friday Night	Saturday	Saturday Night	Sunday	Sunday Night	Monday
								
High: 88 °F	Low: 59 °F	High: 91 °F	Low: 61 °F	High: 88 °F	Low: 58 °F	High: 87 °F	Low: 58 °F	High: 89 °F
Sunny	Mostly Clear	Sunny	Mostly Clear	Sunny	Mostly Clear	Sunny	Partly Cloudy	Sunny

QUANTITATIVE PRECIPITATION FORECAST – 7-Day Total, Sept 26 - Oct 3, 2024



Southwest Region – 7-Day Significant Wildland Fire Potential Outlook

Published: Sep 26, 2024 8:18:35 AM MT

ERC

Little or
NO Risk

LOW RISK

MOD Risk

Lightning

Windy

Predictive Service Area (PSA)	Wed 25 Sep	Thu 26 Sep	Fri 27 Sep	Sat 28 Sep	Sun 29 Sep	Mon 30 Sep	Tue 01 Oct	Wed 02 Oct
SW01 - Northwest AZ	49	47	47	49	50	50	51	51
SW02 - West-Central AZ	64	63	64	66	68	68	69	69
SW03 - Southwest AZ	78	77	81	84	84	82	82	84
SW04 - Four Corners Area	38	39	41	42	43	44	44	45
SW05 - Western Mogollon Rim	40	39	41	43	45	45	47	47
SW06N - Central AZ/Phoenix Metro	71	71	73	75	76	77	79	79
SW06S - Southeast AZ	51	51	53	56	58	59	60	60
SW07 - Northwest NM Mtns.	36	36	39	39	39	41	41	41
SW08 - White Mtns. & Gila Region	37	35	37	39	38	39	40	40
SW09 - South/Central NM Lowlands	57	55	57	58	58	60	61	59
SW10 - Sangre De Cristo Mountains	28	28	31	31	32	33	34	35
SW11 - Central NM Mtns. & Plains	45	44	47	47	46	48	48	48
SW12 - South-Central Nm Mtns.	32	32	35	36	37	38	38	37
SW13 - Northeast NM/NW TX	32	34	36	36	37	40	44	45
SW14N - Southeast NM/West TX	37	39	43	44	46	48	50	50

Min RH

14	19	16	15	17	15	14	17
----	----	----	----	----	----	----	----

Max RH

55	71	64	57	65	60	59	67
----	----	----	----	----	----	----	----

COOPER FIRE

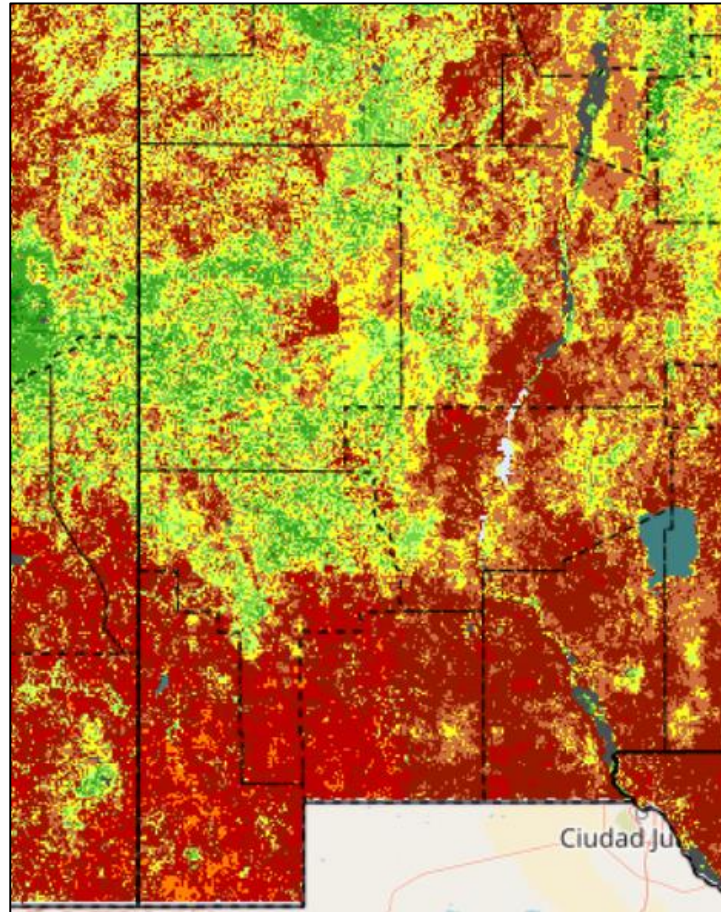
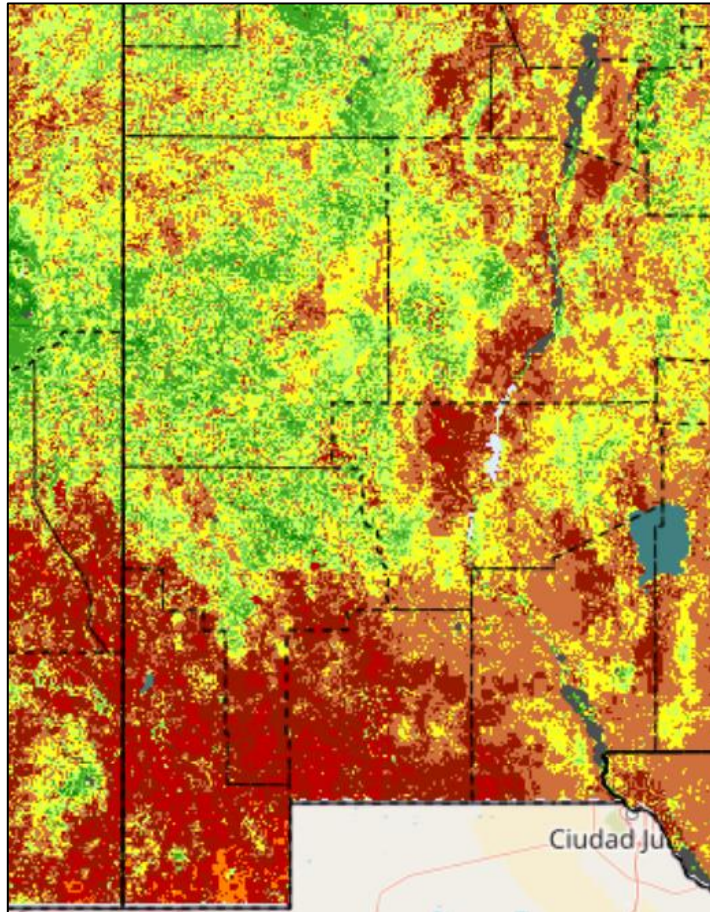
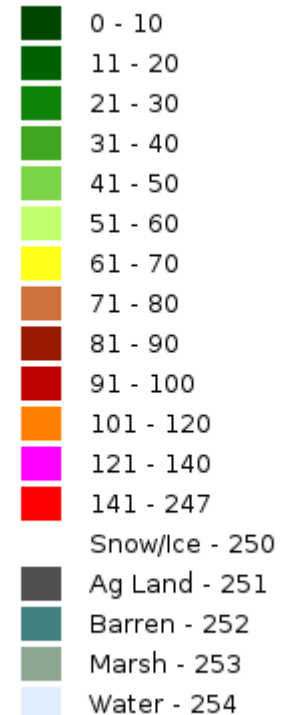
	Thu Sep 26	Fri Sep 27	Sat Sep 28	Sun Sep 29	Mon Sep 30	Tue Oct 1	Wed Oct 2
Max Temp, °F	74	75	73	72	74	71	70
Min Temp, °F	52	53	54	51	52	52	47
Max RH, %	57	48	41	47	48	41	46
Min RH, %	25	19	23	23	18	19	19
Max Dewpoint, °F	40	36	35	34	34	30	30
Min Dewpoint, °F	35	30	31	32	28	27	26
Max Wind, mph	6	7	7	7	7	9	8
Min Wind, mph	3	3	6	5	5	6	5
Max Wind Gust, time/dir.	5 PM ➡	8 PM ↖	11 AM ↖	12 AM ↖	2 PM ↖	5 PM ↖	2 PM ↗
Max Wind Gust, mph	8	9	9	9	9	13	12
Min Wind Gust, mph	5	5	8	7	7	8	7
Max Cloud Cover, %	11	52	66	53	42	34	20
Min Cloud Cover, %	0	3	7	7	17	10	9
Max Prob. of Precip., %	0	4	0	1	2	4	1
Max Haines	4	5	5	4	5	5	5
Max LAL	1	1	1	1			
Max Mixing Height, ft	9000	11500	11000	11000	12000	11000	8000
Min Mixing Height, ft	0	0	0	0	0	0	0
Max Ventilation Rate, kt-ft	26	48	53	99	132	154	72
Min Ventilation Rate, kt-ft	0	0	0	0	0	0	0

Thursday, 9/26

Monday, 9/30

WFPI

Wildland Fire Potential Index



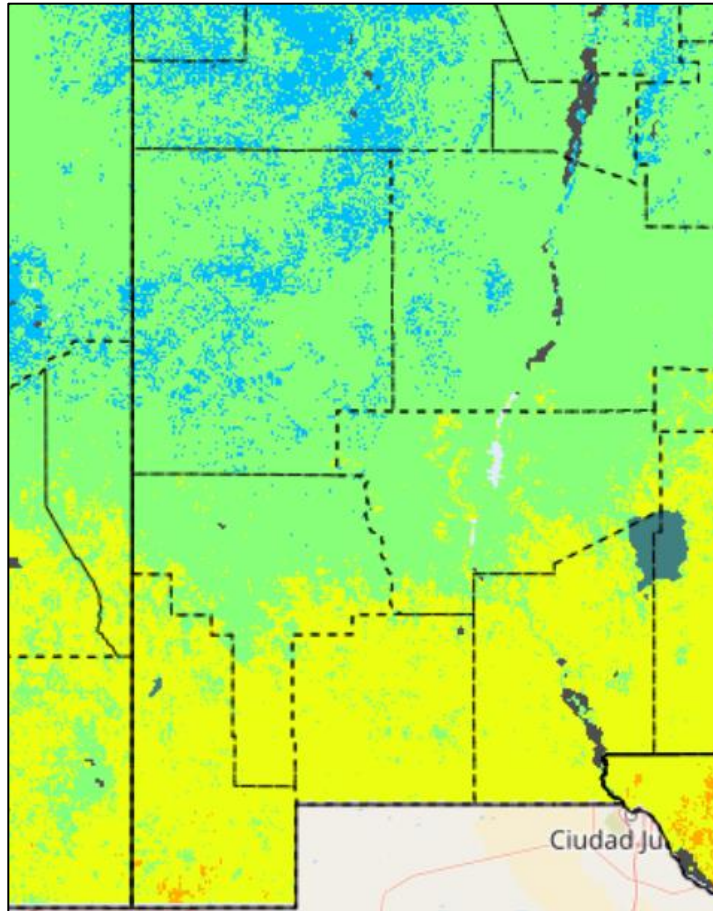
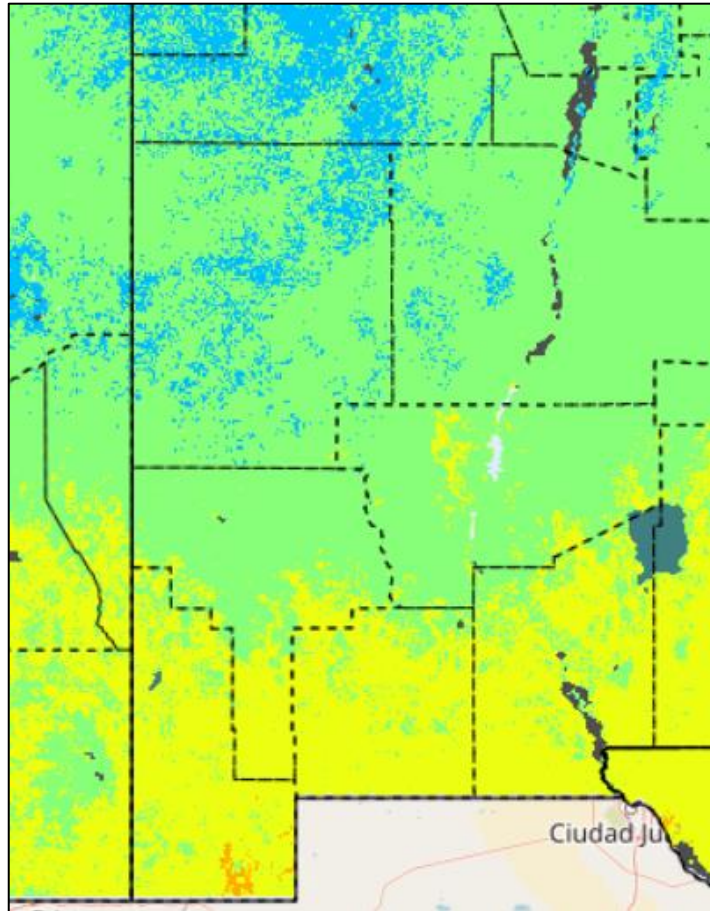
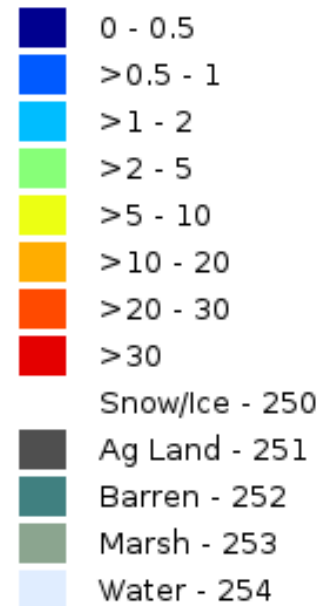
The Wildland Fire Potential Index (WFPI) is sensitive to vegetation flammability based primarily on moisture and wind conditions. It is the base layer that subsequent products are derived. WFPI is developed using an algorithm that describes the ratio of live to dead fuel and includes variables for wind speed, dry bulb temperature, and rainfall. WFPI is a unit-less number that ranges from 0 to 150 and relates to vegetation flammability.

Thursday, 9/26

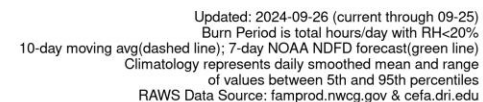
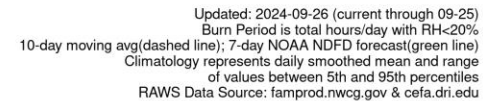
Monday, 9/30

Wildland Fire Spread Probability

WFSP
Percent Probability



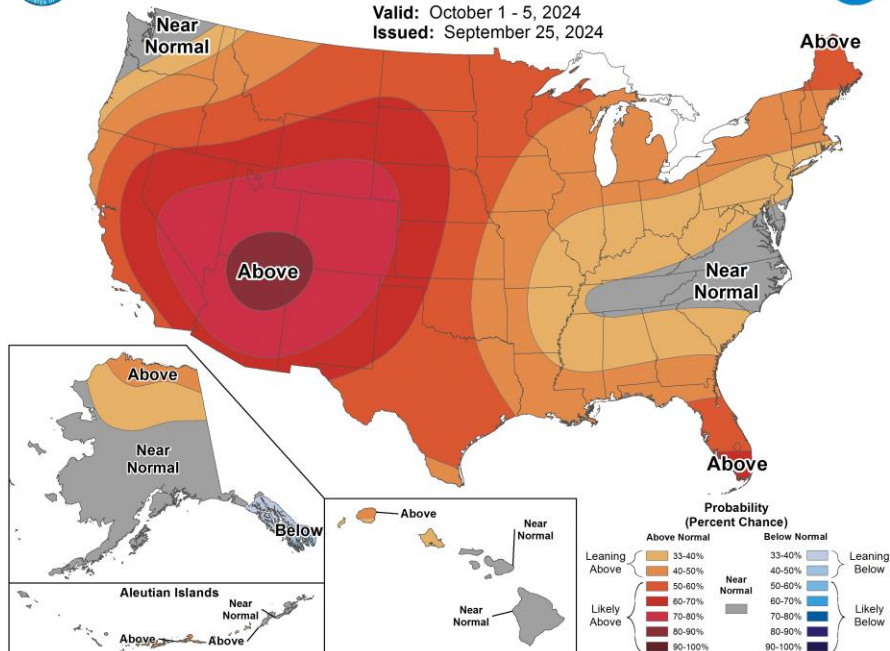
The WFPI-based Fire Spread Probability (WFSP) product indicates the statistical probability that an existing one-acre fire will escape initial control efforts and grow to be a large fire (>500 acres). It is based on a historical ignitions data and their relationship to WFPI.





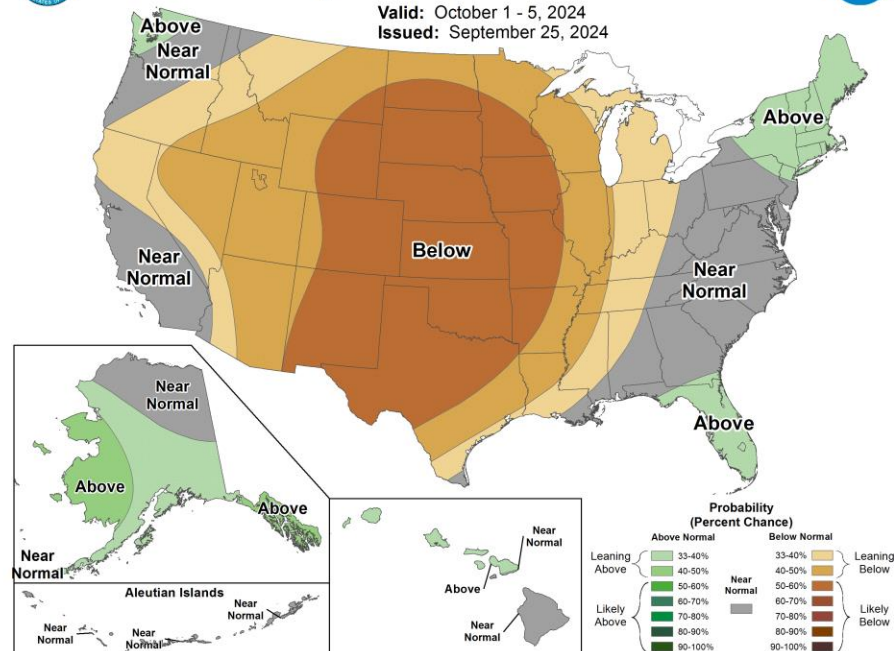
6-10 Day Temperature Outlook

Valid: October 1 - 5, 2024
Issued: September 25, 2024



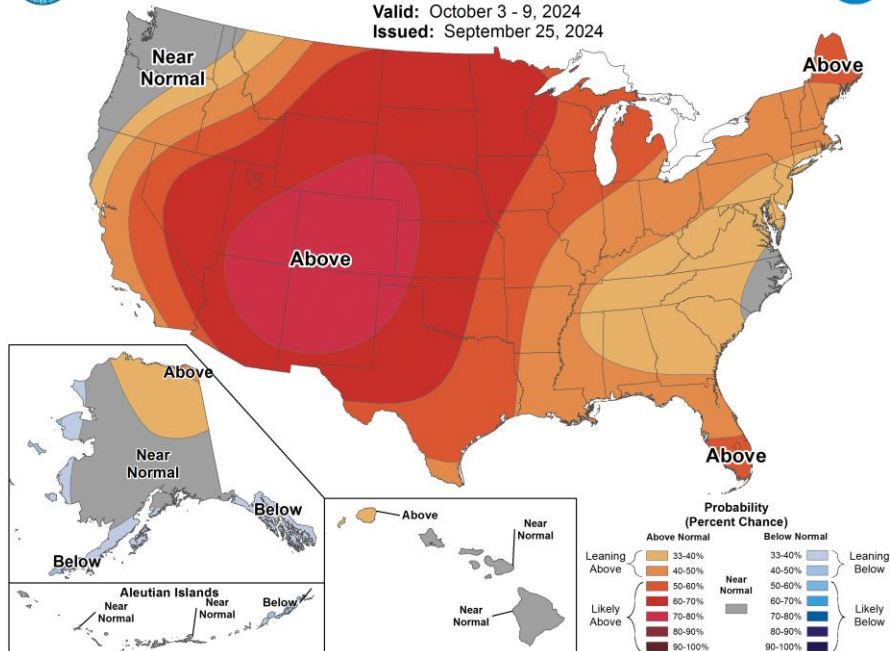
6-10 Day Precipitation Outlook

Valid: October 1 - 5, 2024
Issued: September 25, 2024



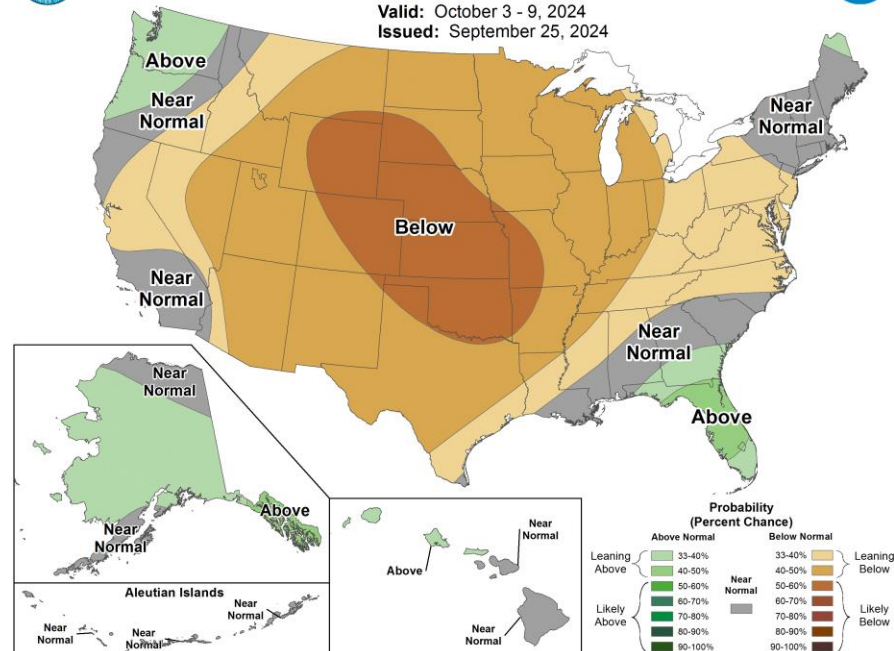
8-14 Day Temperature Outlook

Valid: October 3 - 9, 2024
Issued: September 25, 2024



8-14 Day Precipitation Outlook

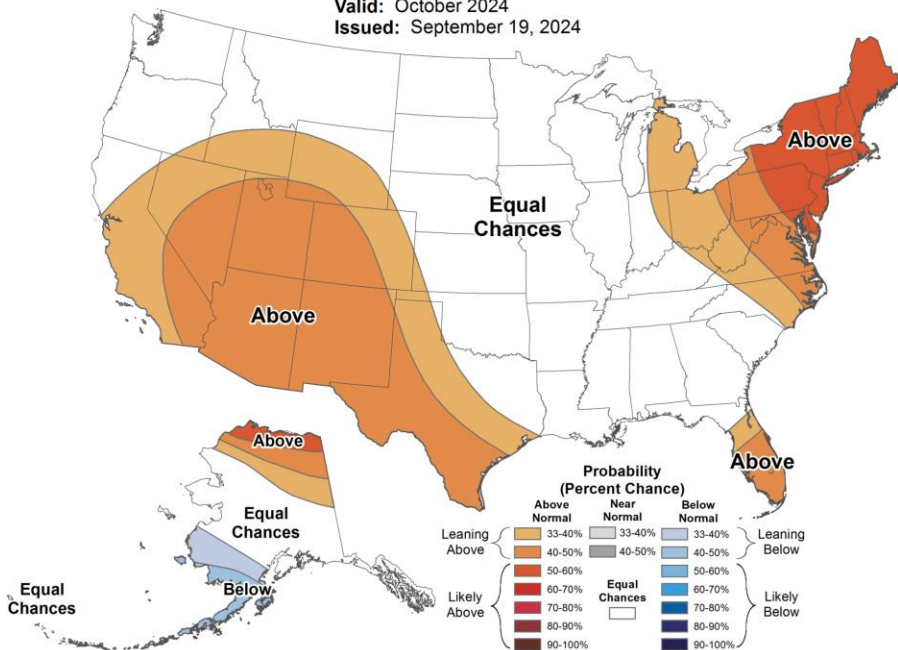
Valid: October 3 - 9, 2024
Issued: September 25, 2024





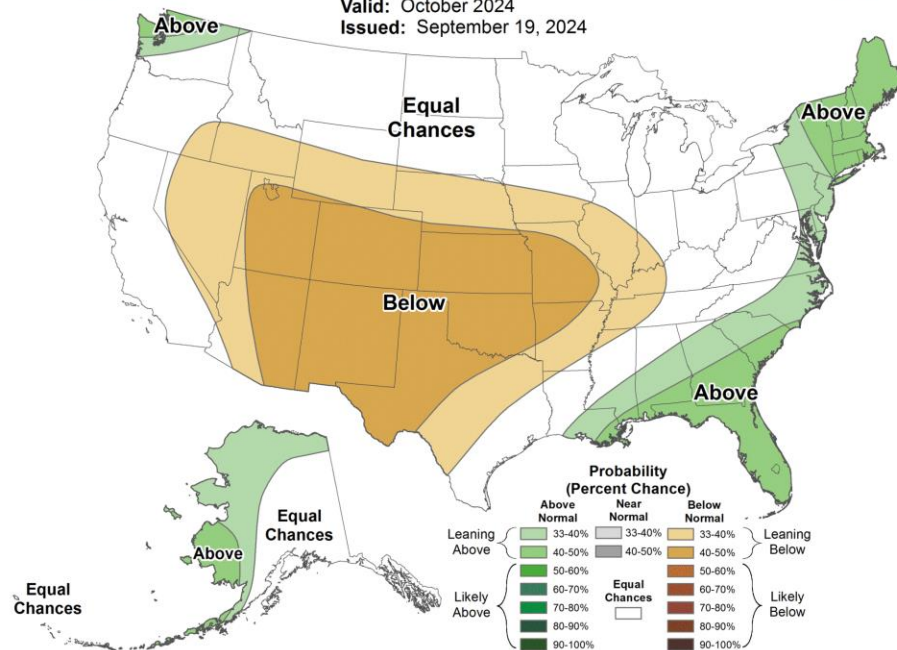
Monthly Temperature Outlook

Valid: October 2024
Issued: September 19, 2024



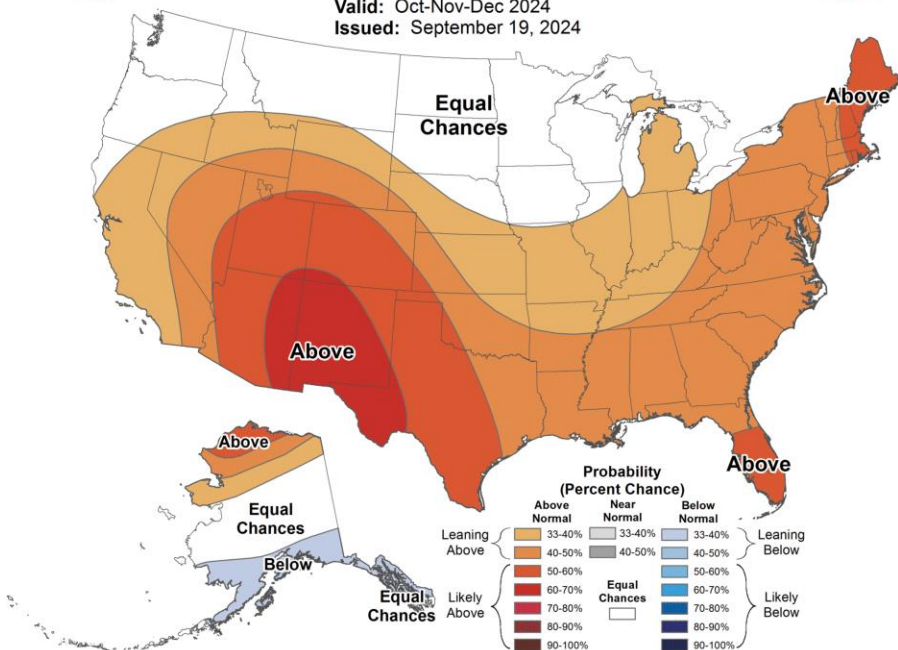
Monthly Precipitation Outlook

Valid: October 2024
Issued: September 19, 2024



Seasonal Temperature Outlook

Valid: Oct-Nov-Dec 2024
Issued: September 19, 2024



Seasonal Precipitation Outlook

Valid: Oct-Nov-Dec 2024
Issued: September 19, 2024

