

Gila NF Precipitation as of 0600 February 13, 2025

47
Slaughter Mesa
Jan – 0.54"
Feb – 0.00"

50 Luna
Jan – 0.05"
Feb – 0.00"

52 Reserve
Jan – 0.04"
Feb – 0.00"

52 Mogollon
Jan – 0.32"
Feb – 0.00"

Pelona **51**
Jan – 0.31"
Feb – 0.00"

Beaverhead **51**
Jan – 18"
Feb – 0.00"

Gila Center **53**
Jan – 0.23"
Feb – 0.00"

51
Burro Mt
Jan – 0.27"
Feb – 0.00"

ERC

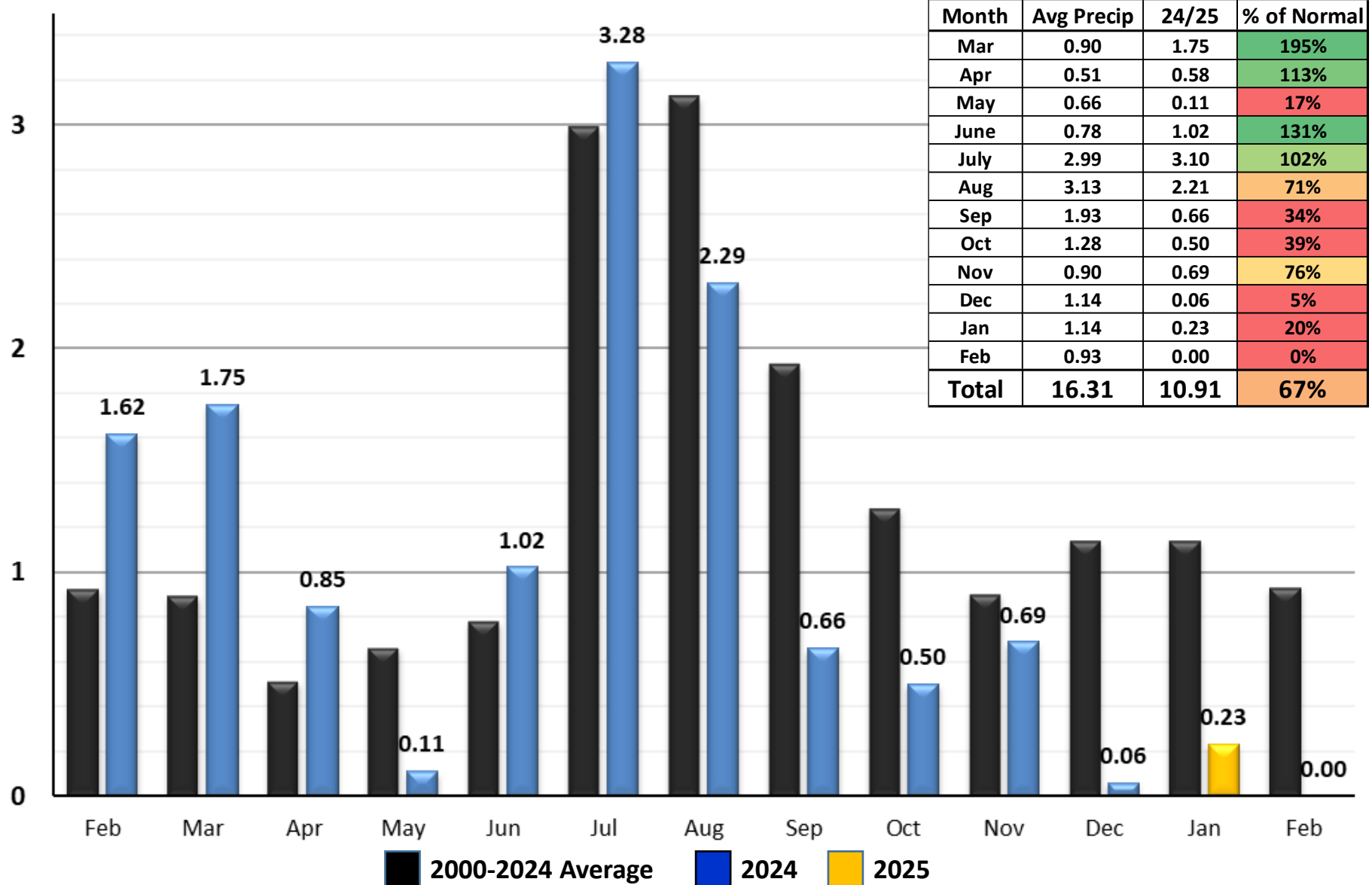
Gila NF 2000-2024
Historical Average
Precipitation
Jan = 1.14"
Feb = 0.96"

Past 7 Days Actual

Slaughter Mesa – 0.00
Luna – 0.00
Reserve – 0.00
Mogollon – 0.00
Pelona – 0.00
Beaverhead – 0.00
Gila Center – 0.00
Burro Mt – 0.00
Gila NF 7 Day Avg = 0.00
February Average = 0.00

Gila NF Precipitation - Historical Compared to 2024/2025

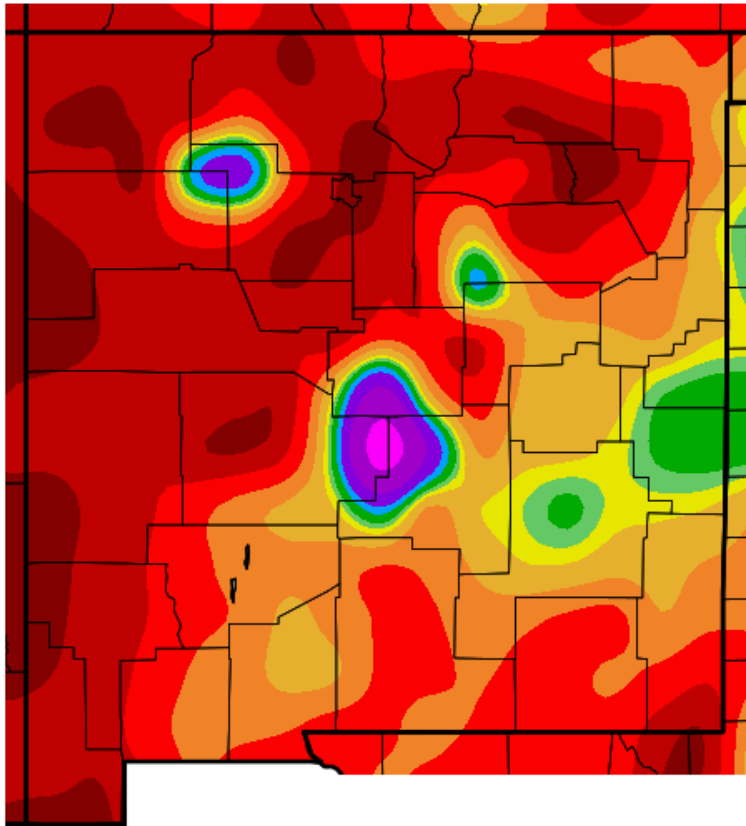
(All Gila NF RAWS Averaged as of 0600 February 13, 2025)



Precipitation – Percent of Average

Past 3 Months

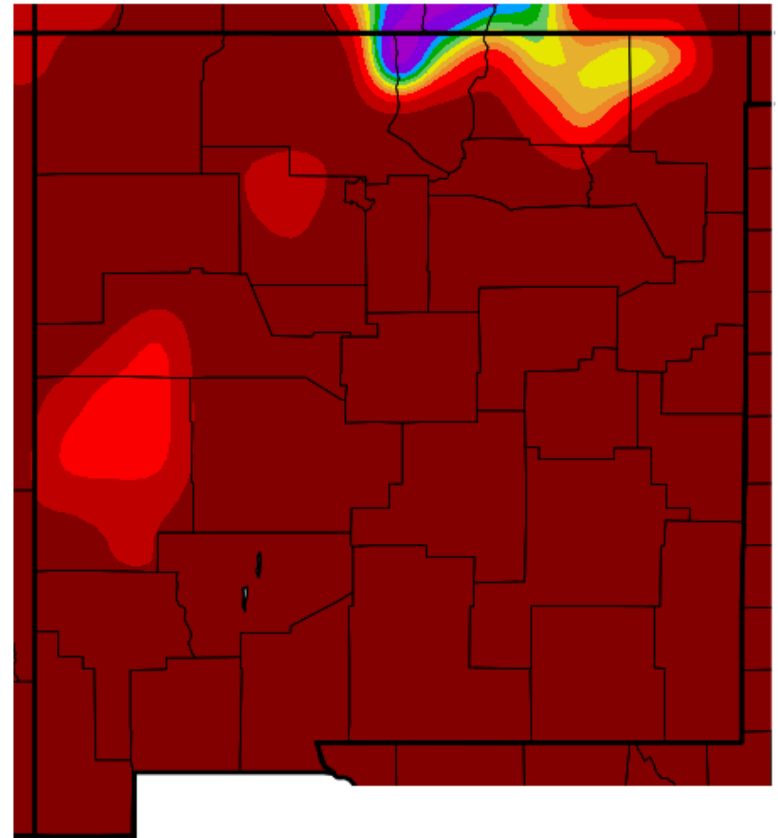
Percent of Average Precipitation (%)
11/14/2024 – 2/11/2025



Generated 2/12/2025 at WRCC using provisional data.
NOAA Regional Climate Centers

Past 2 Weeks

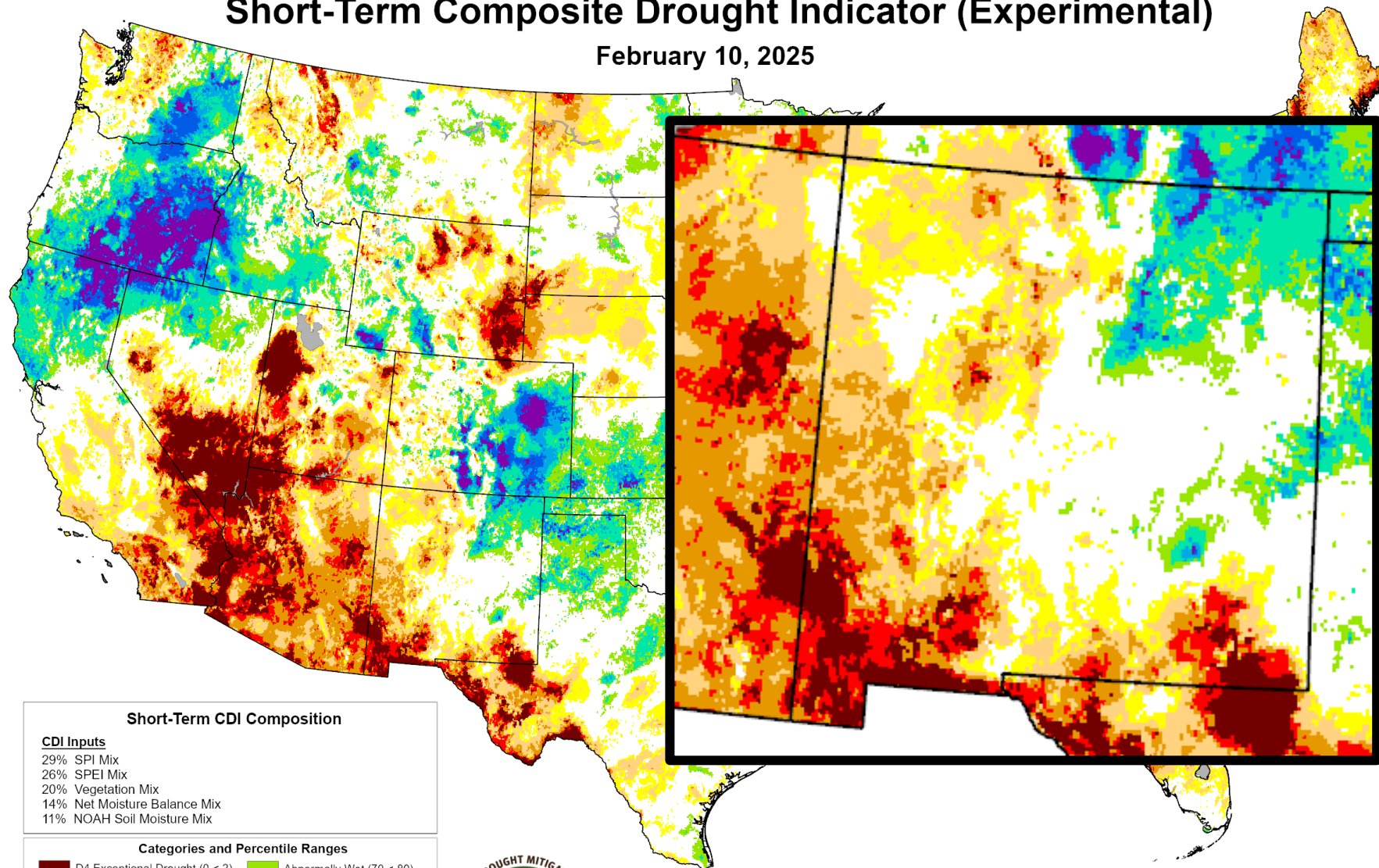
Percent of Average Precipitation (%)
1/29/2025 – 2/11/2025



Generated 2/12/2025 at WRCC using provisional data.
NOAA Regional Climate Centers

Short-Term Composite Drought Indicator (Experimental)

February 10, 2025



Short-Term CDI Composition

CDI Inputs

29% SPI Mix
26% SPEI Mix
20% Vegetation Mix
14% Net Moisture Balance Mix
11% NOAA Soil Moisture Mix

Categories and Percentile Ranges

D4 Exceptional Drought (0 < 2)	Abnormally Wet (70 < 80)
D3 Extreme Drought (2 < 5)	Moderately Wet (80 < 90)
D2 Severe Drought (5 < 10)	Severely Wet (90 < 95)
D1 Moderate Drought (10 < 20)	Extremely Wet (95 < 98)
D0 Abnormally Dry (20 < 30)	Exceptionally Wet (98 - 100)
Near Normal (30 < 70)	No Data

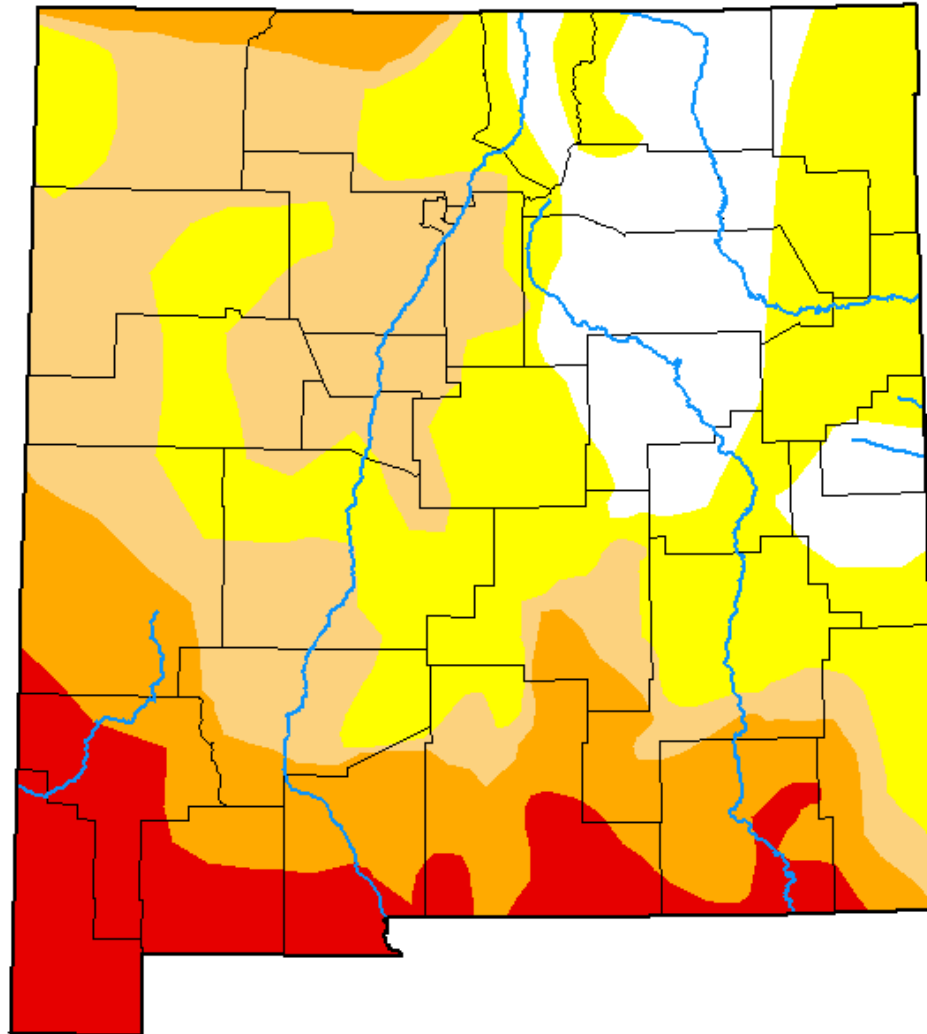


U.S. Drought Monitor

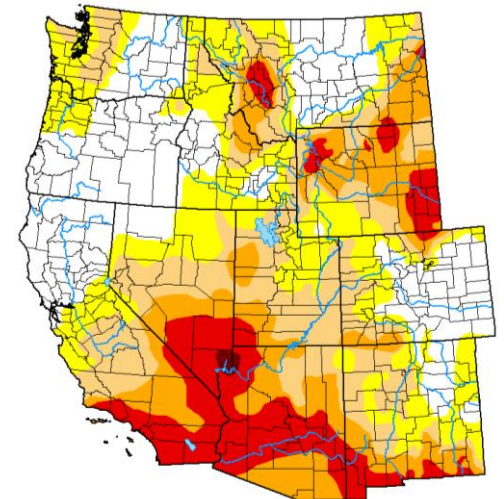
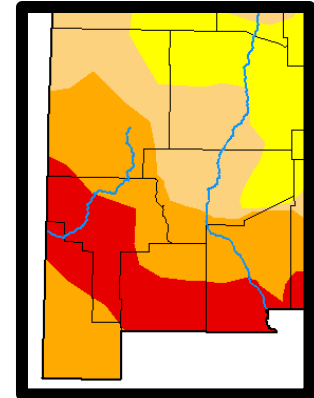
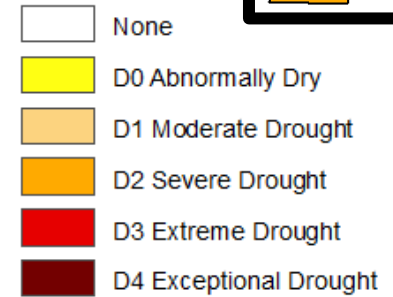
New Mexico

February 11, 2025
(Released Thursday, Feb. 13, 2025)
Valid 7 a.m. EST

Last Week

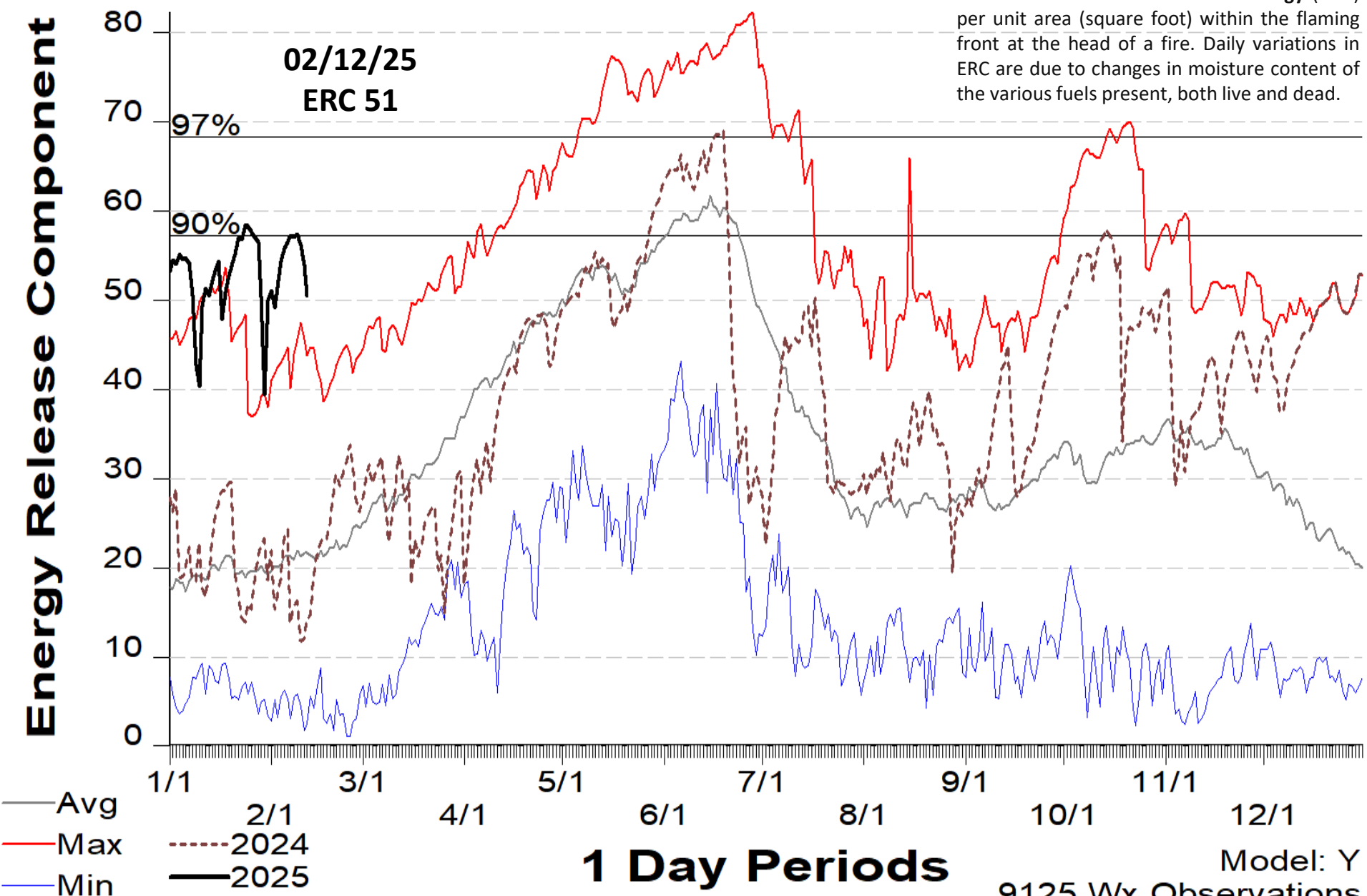


Intensity:



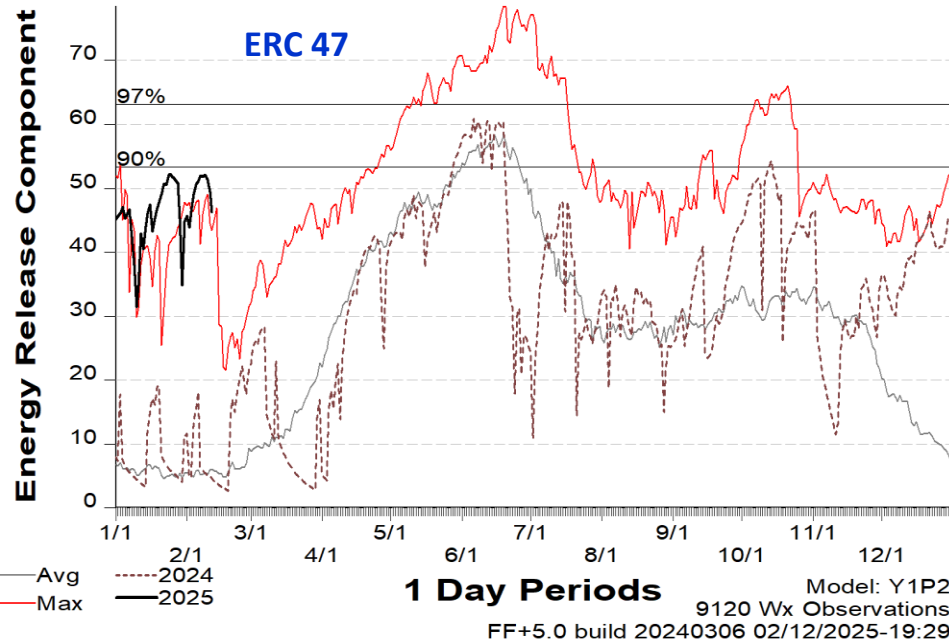
The **energy release component** (ERC) is a number related to the available **energy** (BTU) per unit area (square foot) within the flaming front at the head of a fire. Daily variations in ERC are due to changes in moisture content of the various fuels present, both live and dead.

Energy Release Component

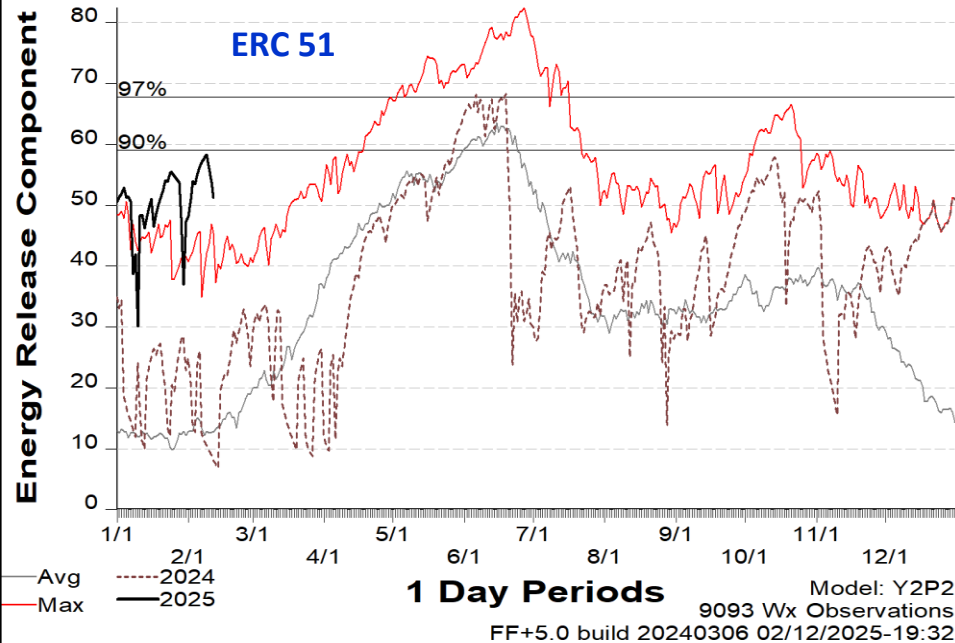


1 Day Periods

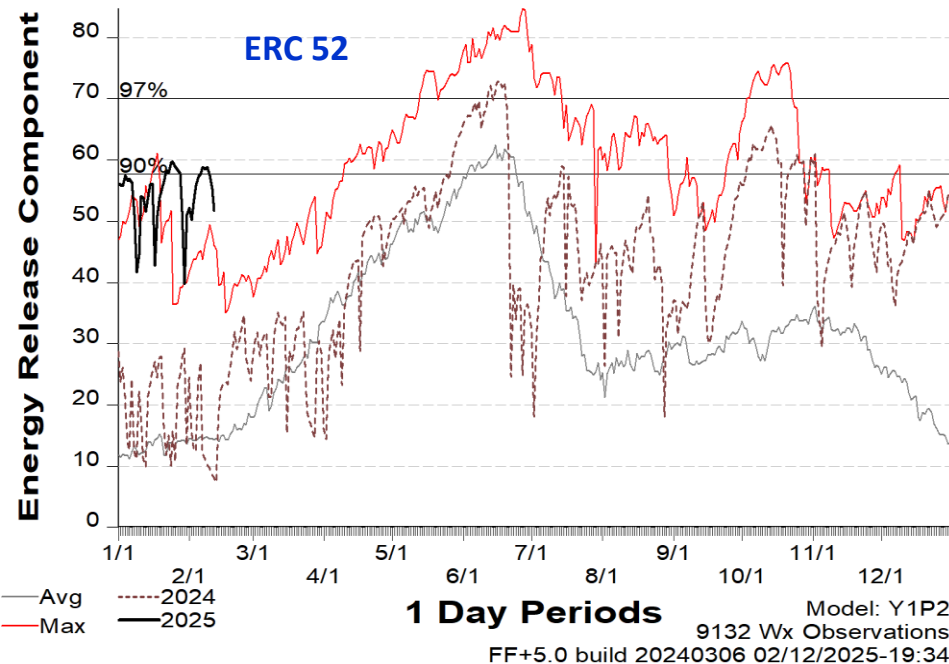
292008-SLAUGHTER MESA 2000 - 2024



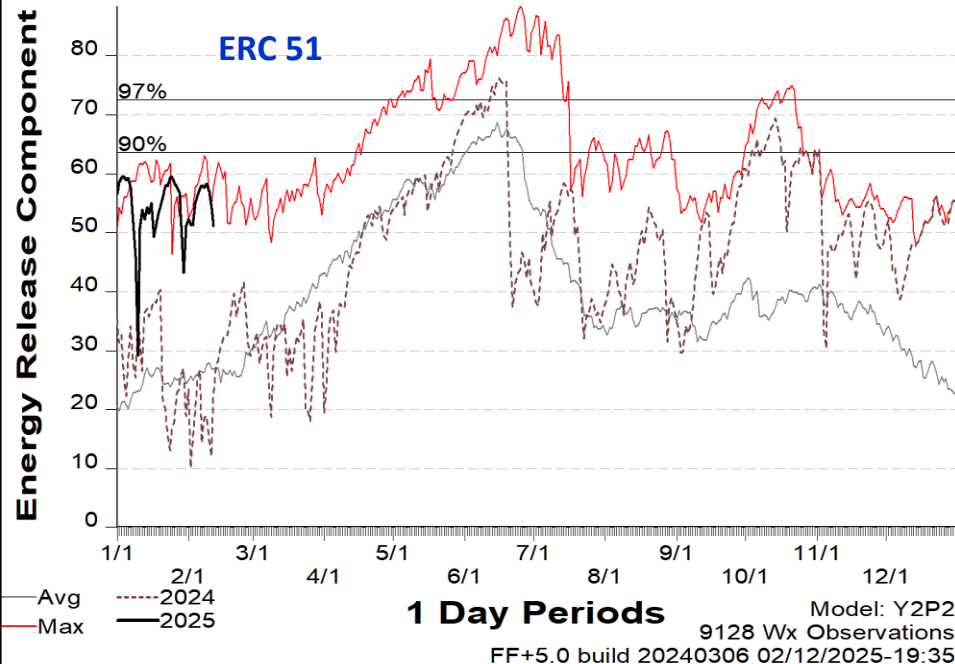
292009-PELONA 2000 - 2024



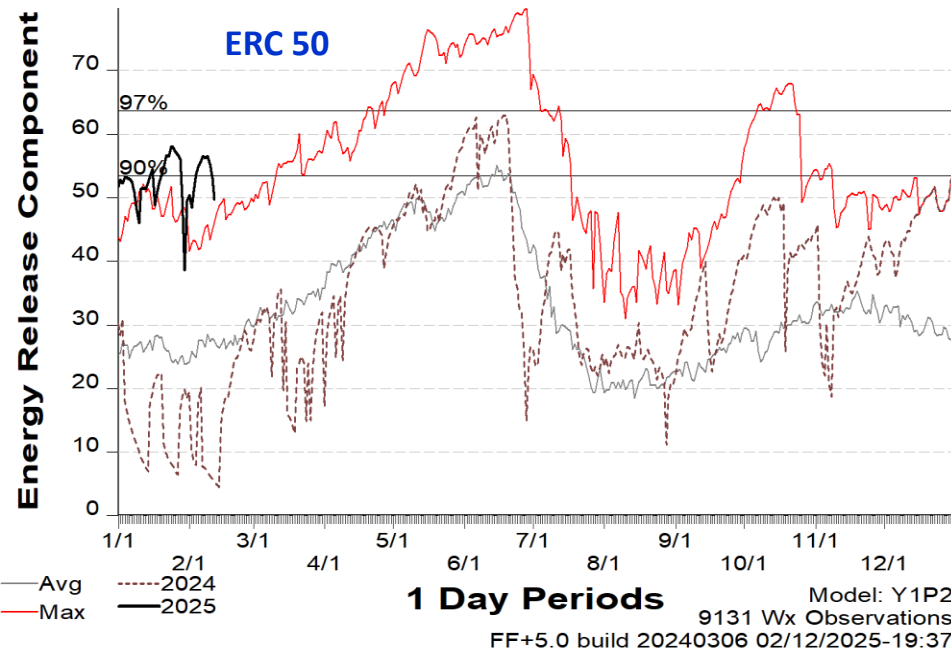
292013-MOGOLLON 2000 - 2024



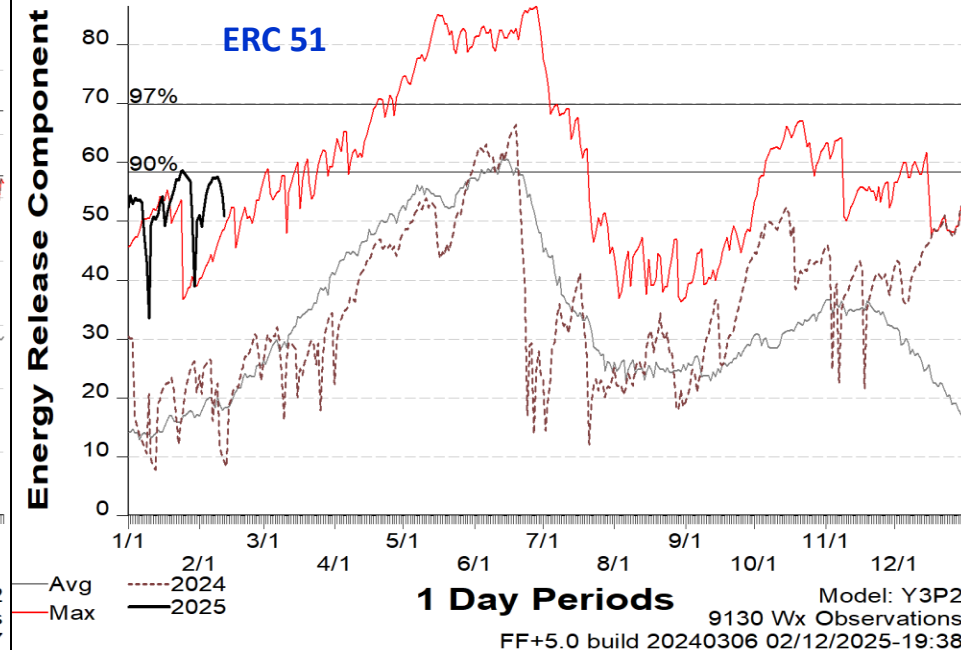
292504-BURRO MOUNTAIN 2000 - 2024



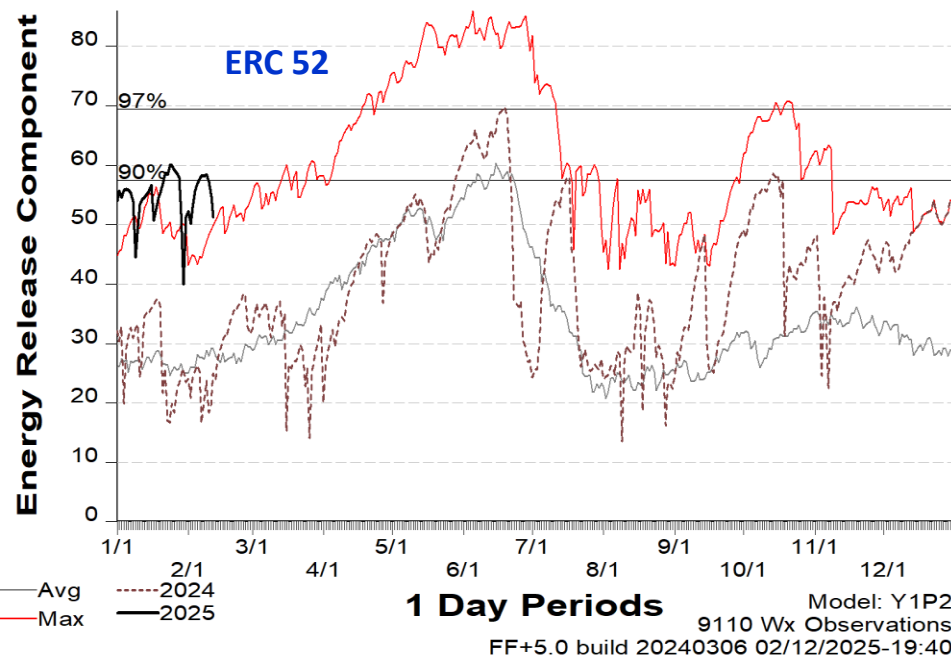
292004-LUNA 2000 - 2024



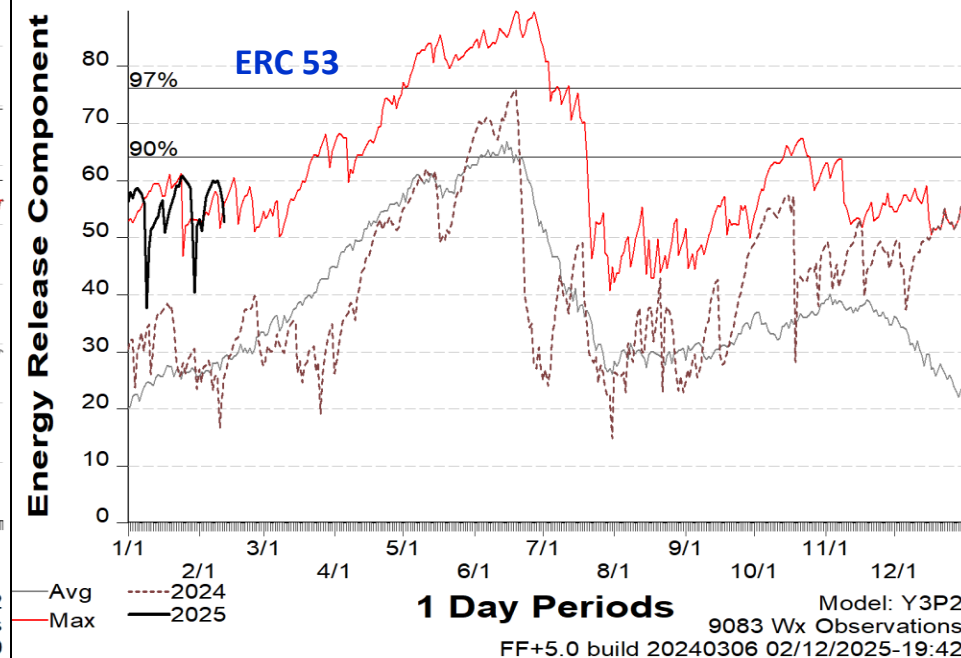
292001-BEAVERHEAD 2000 - 2024



292005-RESERVE 2000 - 2024

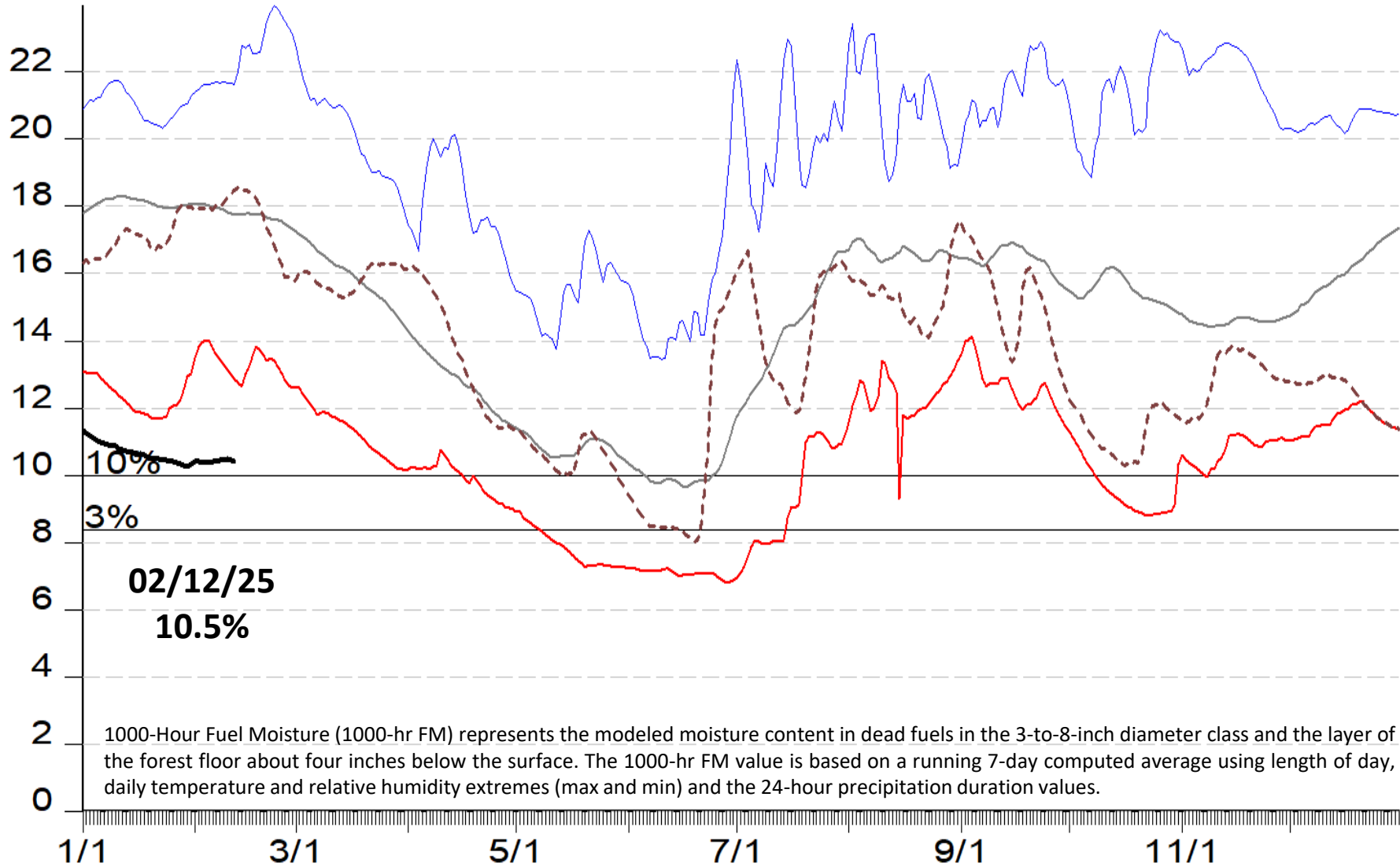


292011-GILA CENTER RAWS 2000 - 2024



SIG - Gila NF 2000 - 2024

1000-Hour Fuel Moisture



— Avg
— Max
— Min

2/1
2024
2025

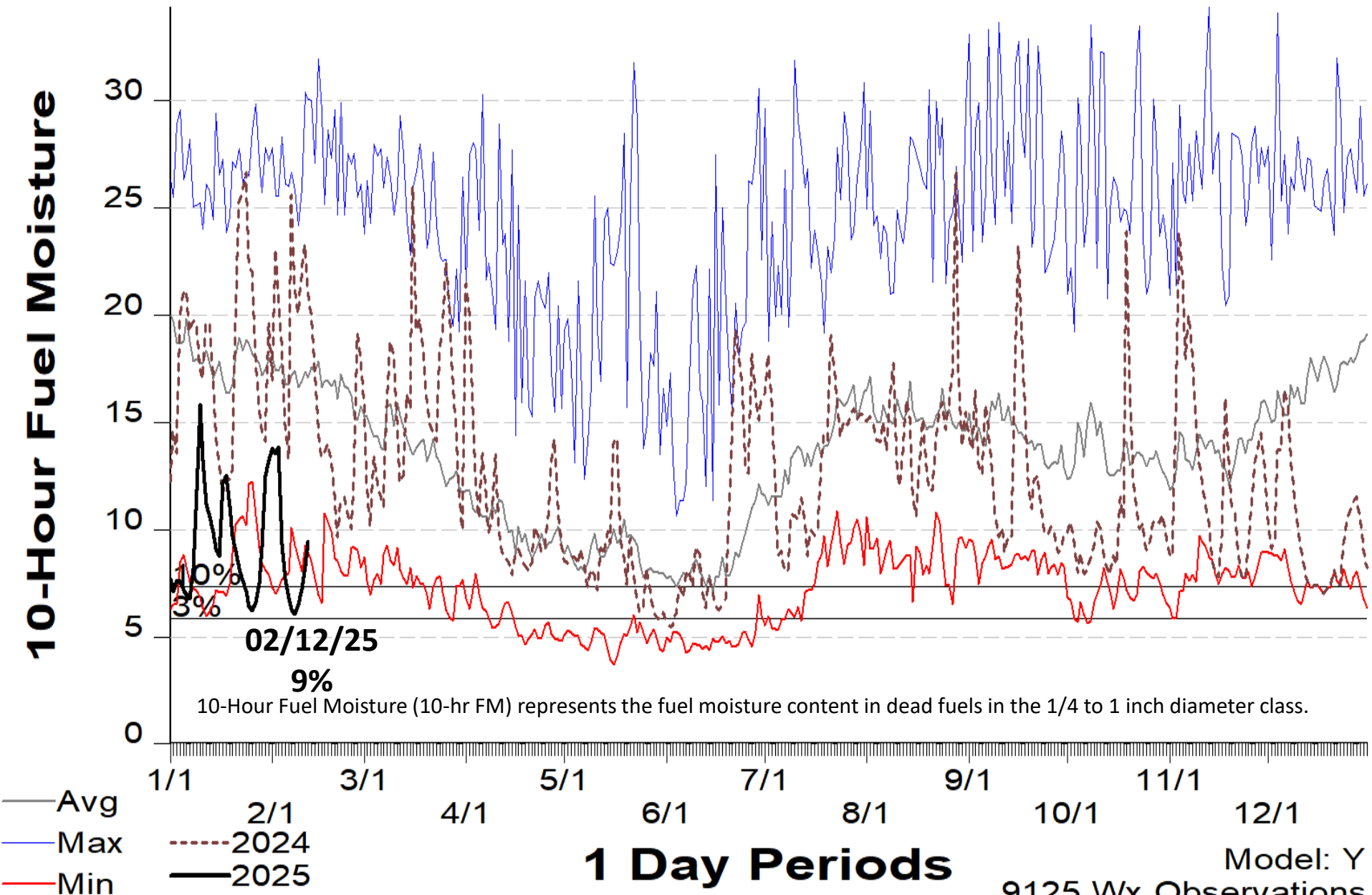
1 Day Periods

Model: Y
9125 Wx Observations
FF+5.0 build 20240306 02/12/2025-19:20

ALL GILA NF RAWS

SIG - Gila NF 2000 - 2024

10-Hour Fuel Moisture



National Weather Service NEW MEXICO FIRE WEATHER ZONE 110 – 021320250621

DISCUSSION...

- Today, expect low fire weather conditions with generally light winds and min RH's above 20%.
- Friday - Saturday, expect increased RH and gusty winds, with a chance of precipitation in the western and northern portions of the zone.
- Sunday and Monday, expect min RH's drop lower, near 10% in the lowlands and near 20% in area mountains, but winds will be lighter.
- Ventilation rates the next couple of days will range from good to excellent.

NM Weather Zone 110		Sky Weather	RH Recovery 0100-0800	Max Temp	Min RH	Wind Dir	Wind Speed	Prob of Precip
13-Feb	Thu	Mostly Sunny to Partly Cloudy with a Slight Chance of Precip	75-95% Ridges 80-95% Valley	45-60°	20-40%	S	8-15	0-10%
14-Feb	Fri	Mostly Cloudy with a Chance of Precip	70-95% Ridges 80-95% Valley	45-60°	35-55%	SW	15-30	0-80%
15-Feb	Sat	Mostly Cloudy Becoming Mostly Sunny	50-70% Ridges 80-95% Valley	45-60°	20-40%	NW	15-30	0-40%

****On or about February 1, 2025, the NWS will discontinue Haines Index and Lightning Activity Level(LAL) in all Fire Weather Products. The discontinuation is due to the new science demonstrating the forecast information is best assessed through other forecast fields.****





13 Miles W Pie Town NM Quemado NM

Today	Tonight	Friday	Friday Night	Saturday	Saturday Night	Sunday	Sunday Night	Washington's Birthday
								
High: 53 °F	Low: 34 °F	High: 48 °F	Low: 24 °F	High: 43 °F	Low: 17 °F	High: 54 °F	Low: 25 °F	High: 62 °F
Mostly Sunny	Chance Rain	Rain and Breezy	Rain/Snow Likely then Chance Snow Showers	Chance Snow Showers	Partly Cloudy	Partly Sunny	Mostly Cloudy	Partly Sunny

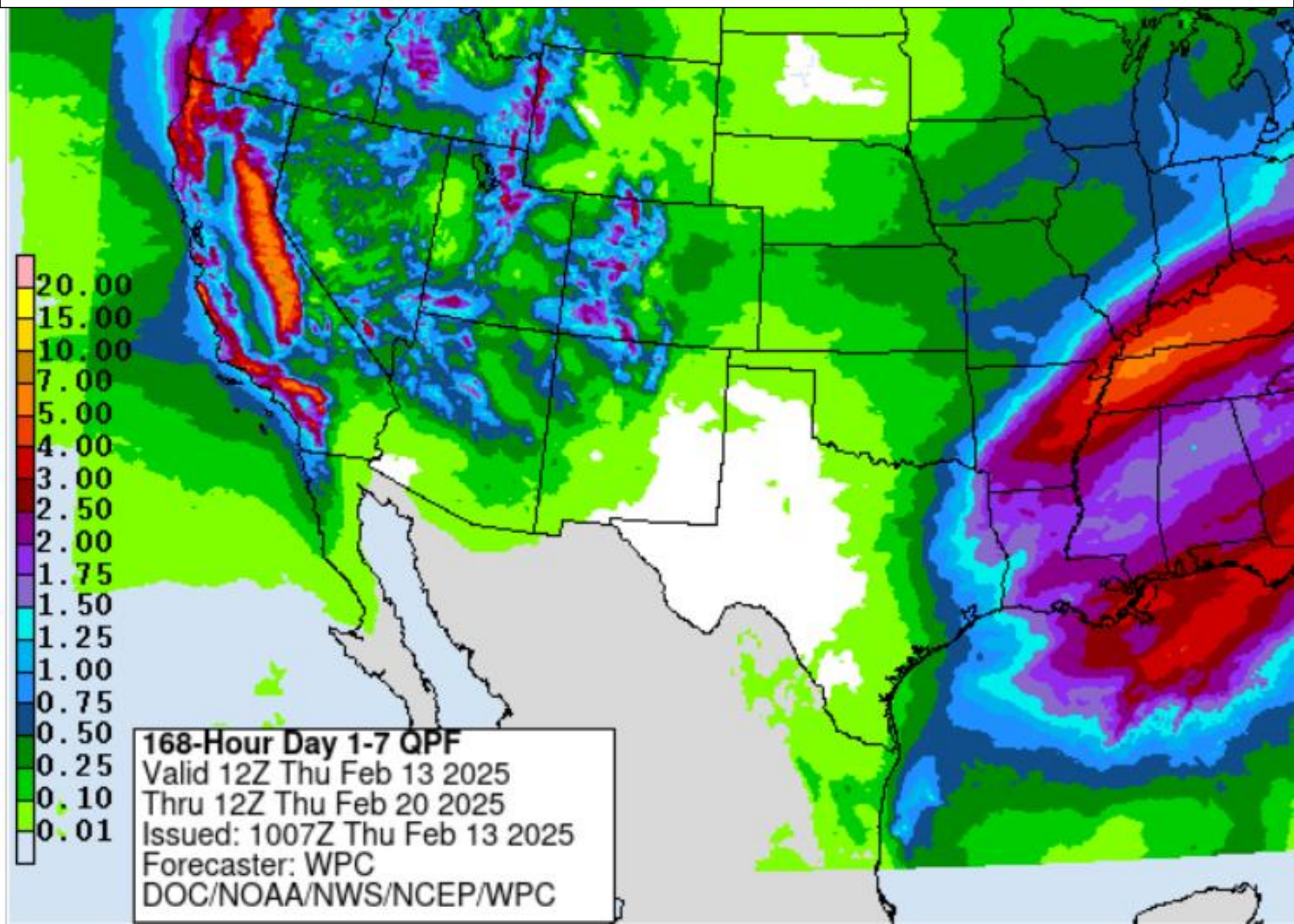
Reserve NM

Today	Tonight	Friday	Friday Night	Saturday	Saturday Night	Sunday	Sunday Night	Washington's Birthday
								
High: 56 °F	Low: 30 °F	High: 51 °F	Low: 16 °F	High: 56 °F	Low: 12 °F	High: 63 °F	Low: 18 °F	High: 67 °F
Sunny then Slight Chance Rain	Chance Rain then Chance Rain/Snow	Rain/Snow Likely then Rain Likely and Breezy	Rain/Snow then Chance Snow Showers	Chance Rain/Snow	Partly Cloudy	Mostly Sunny	Mostly Cloudy	Partly Sunny

Silver City NM

Today	Tonight	Friday	Friday Night	Saturday	Saturday Night	Sunday	Sunday Night	Washington's Birthday
								
High: 55 °F	Low: 38 °F	High: 57 °F	Low: 32 °F	High: 54 °F	Low: 27 °F	High: 58 °F	Low: 35 °F	High: 62 °F
Mostly Sunny	Decreasing Clouds	Chance Showers and Windy	Showers Likely then Chance Rain/Snow	Chance Rain/Snow then Chance Showers	Mostly Clear	Mostly Sunny	Mostly Cloudy	Partly Sunny

QUANTITATIVE PRECIPITATION FORECAST – 7-Day Total, Feb 13-20, 2025



Southwest Region – 7-Day Significant Wildland Fire Potential Outlook

Published: Feb 13, 2025 8:48:44 AM MT

ERC

Little or
NO Risk

LOW RISK

MOD Risk

Lightning

Windy

Predictive Service Area (PSA)	Wed 12 Feb	Thu 13 Feb	Fri 14 Feb	Sat 15 Feb	Sun 16 Feb	Mon 17 Feb	Tue 18 Feb	Wed 19 Feb
SW01 - Northwest AZ	43	37	18	25	27	26	25	26
SW02 - West-Central AZ	49	45	24	30	31	31	33	34
SW03 - Southwest AZ	56	54	53	53	57	58	58	60
SW04 - Four Corners Area	45	46	32	29	33	34	33	33
SW05 - Western Mogollon Rim	49	46	36	34	38	39	38	38
SW06N - Central AZ/Phoenix Metro	56	55	46	41	46	47	48	50
SW06S - Southeast AZ	54	53	53	51	53	55	56	56
SW07 - Northwest NM Mtns.	39	40	31	24	29	31	32	32
SW08 - White Mtns. & Gila Region	53	52	49	49	51	54	54	53
SW09 - South/Central NM Lowlands	64	60	60	58	58	61	62	60
SW10 - Sangre De Cristo Mountains	29	31	26	23	26	28	28	28
SW11 - Central NM Mtns. & Plains	56	54	53	50	51	53	54	52
SW12 - South-Central Nm Mtns.	48	48	48	46	48	51	52	49
SW13 - Northeast NM/NW TX	16	18	19	18	18	20	18	18
SW14N - Southeast NM/West TX	20	19	19	20	19	19	21	20

Luna - NW

	Thu Feb 13	Fri Feb 14	Sat Feb 15	Sun Feb 16	Mon Feb 17	Tue Feb 18	Wed Feb 19
Max Temp, °F	51	45	49	58	62	56	58
Min Temp, °F	20	29	21	18	27	26	21
Max RH, %	68	80	77	57	40	46	52
Min RH, %	32	54	23	12	12	15	12
Max Dewpoint, °F	25	33	17	10	13	14	9
Min Dewpoint, °F	11	18	8	5	5	7	5
Max Wind, mph	15	21	14	6	14	14	8
Min Wind, mph	1	6	2	0	2	1	1
Max Wind Gust, time/dir.	2 PM ↗	2 PM ↗	2 PM ↘	2 PM ↗	2 PM ↗	2 PM →	2 PM ↗
Max Wind Gust, mph	21	29	20	8	20	20	12
Min Wind Gust, mph	1	8	3	0	3	1	1
Max Cloud Cover, %	88	94	79	75	79	59	38
Min Cloud Cover, %	8	67	21	21	50	23	23
Max Prob. of Precip., %	34	80	63	0	1	15	3
Max Mixing Height, ft	4500	3500	7000	2500	4500	7000	5500
Min Mixing Height, ft	500	500	0	0	0	0	0
Max Ventilation Rate, kt-ft	86	98	140	10	86	105	50
Min Ventilation Rate, kt-ft	1	4	0	0	0	0	0

Beaverhead - East

	Thu Feb 13	Fri Feb 14	Sat Feb 15	Sun Feb 16	Mon Feb 17	Tue Feb 18	Wed Feb 19
Max Temp, °F	54	50	52	60	64	59	59
Min Temp, °F	14	25	15	10	19	20	13
Max RH, %	88	100	100	95	60	63	84
Min RH, %	29	45	19	11	12	14	12
Max Dewpoint, °F	27	33	20	9	15	15	13
Min Dewpoint, °F	11	22	9	6	4	6	5
Max Wind, mph	13	22	10	5	10	10	7
Min Wind, mph	2	7	2	1	2	2	1
Max Wind Gust, time/dir.	2 PM ↗	2 PM ↗	12 PM ↘	2 PM ↗	2 PM ↗	1 PM →	1 PM ↗
Max Wind Gust, mph	17	31	15	7	15	15	9
Min Wind Gust, mph	3	9	3	1	3	3	1
Max Cloud Cover, %	84	79	70	71	71	51	33
Min Cloud Cover, %	8	52	18	18	48	25	20
Max Prob. of Precip., %	13	60	40	0	0	9	3
Max Mixing Height, ft	4500	5000	7500	2500	4000	8000	4500
Min Mixing Height, ft	0	0	0	0	0	0	0
Max Ventilation Rate, kt-ft	86	185	165	14	92	144	45
Min Ventilation Rate, kt-ft	0	0	0	0	0	0	0

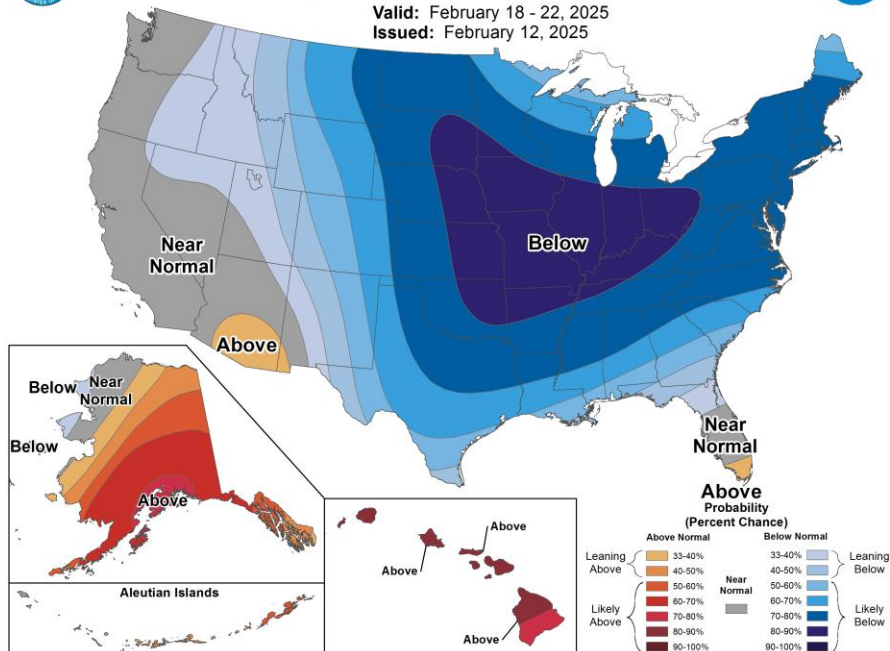
White Signal - South

	Thu Feb 13	Fri Feb 14	Sat Feb 15	Sun Feb 16	Mon Feb 17	Tue Feb 18	Wed Feb 19
Max Temp, °F	55	58	52	57	62	59	58
Min Temp, °F	35	40	37	32	39	40	35
Max RH, %	59	67	67	47	31	31	41
Min RH, %	32	34	25	14	13	15	15
Max Dewpoint, °F	29	32	30	16	13	13	15
Min Dewpoint, °F	23	29	16	9	10	10	9
Max Wind, mph	10	35	24	9	21	23	13
Min Wind, mph	3	5	7	6	3	9	6
Max Wind Gust, time/dir.	2 PM ↗	5 PM →	12 AM ↘	12 PM ↖	4 PM →	3 PM →	12 PM ↖
Max Wind Gust, mph	18	52	37	16	33	36	20
Min Wind Gust, mph	8	7	12	8	6	14	10
Max Cloud Cover, %	81	56	55	61	58	31	13
Min Cloud Cover, %	4	23	6	8	36	15	1
Max Prob. of Precip., %	10	50	50	1	1	4	3
Max Mixing Height, ft	4775	5890	6298	3884	5189	6986	5831
Min Mixing Height, ft	393	419	77	226	93	0	97
Max Ventilation Rate, kt-ft	72	212	164	31	140	147	64
Min Ventilation Rate, kt-ft	2	3	1	1	1	0	1



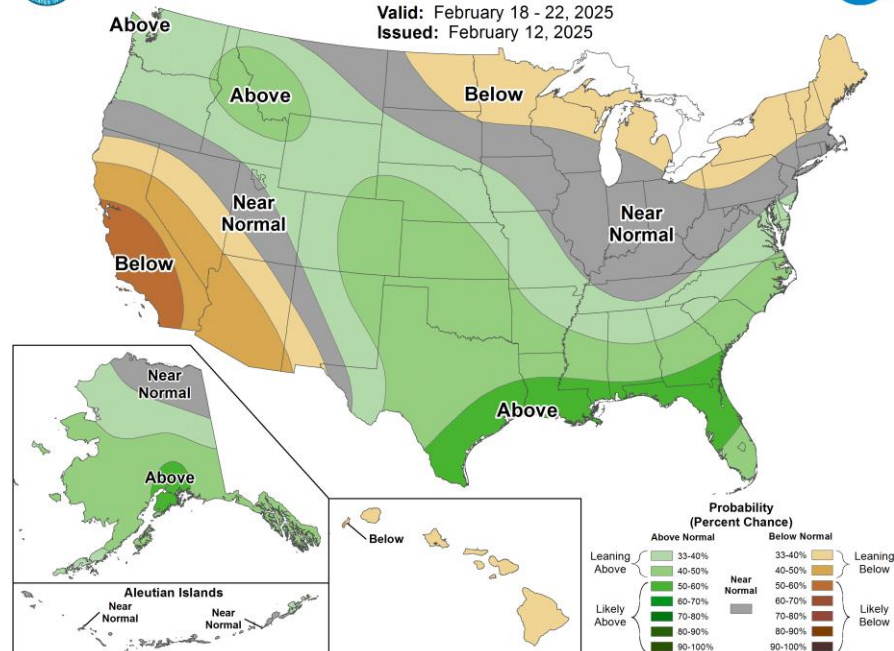
6-10 Day Temperature Outlook

Valid: February 18 - 22, 2025
Issued: February 12, 2025



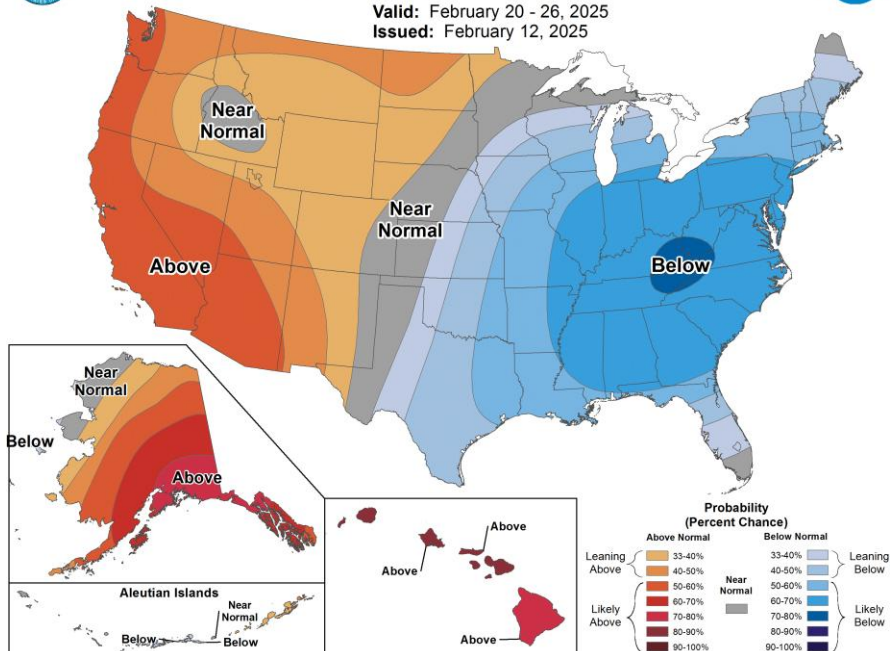
6-10 Day Precipitation Outlook

Valid: February 18 - 22, 2025
Issued: February 12, 2025



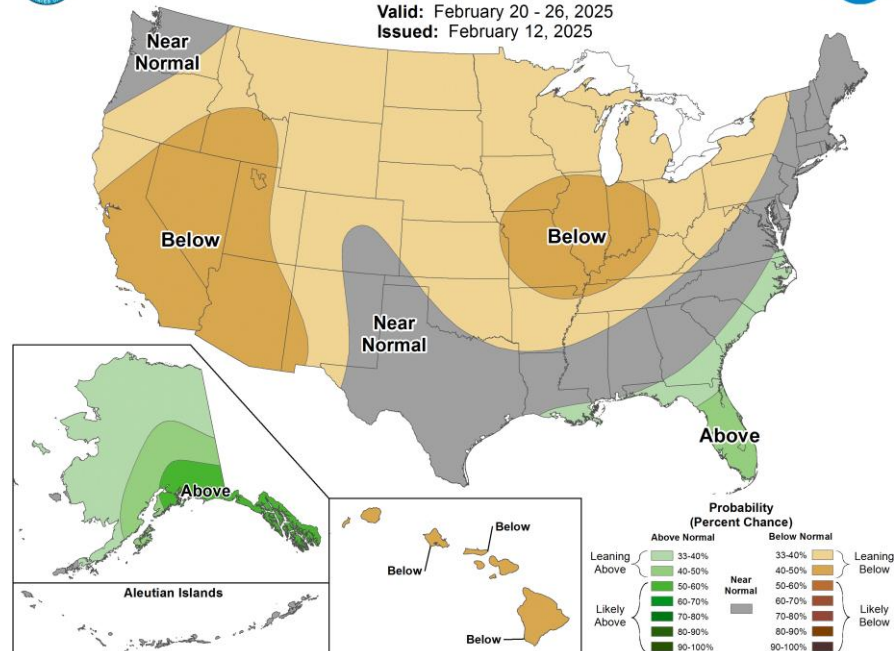
8-14 Day Temperature Outlook

Valid: February 20 - 26, 2025
Issued: February 12, 2025



8-14 Day Precipitation Outlook

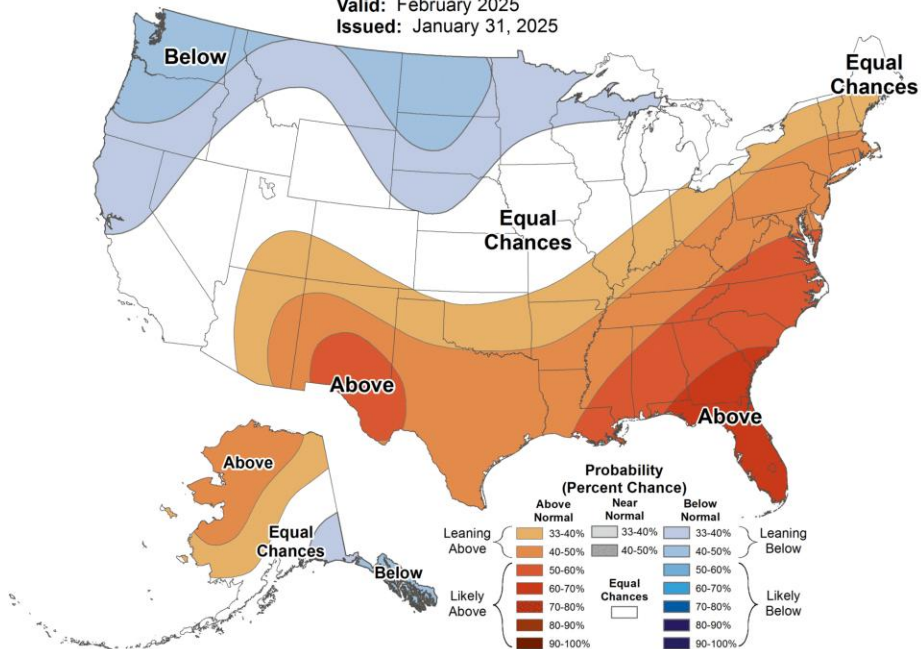
Valid: February 20 - 26, 2025
Issued: February 12, 2025





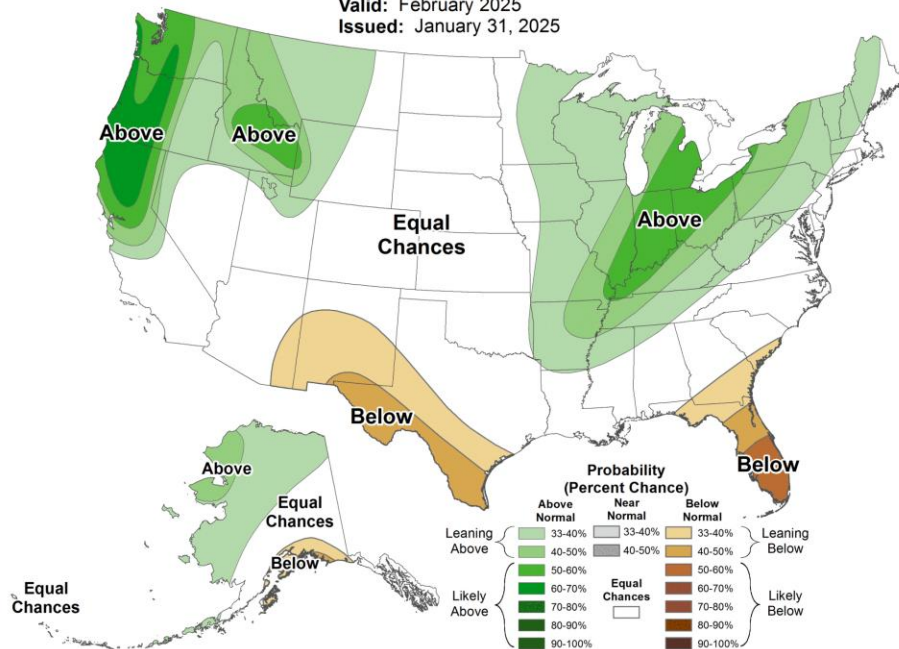
Monthly Temperature Outlook

Valid: February 2025
Issued: January 31, 2025



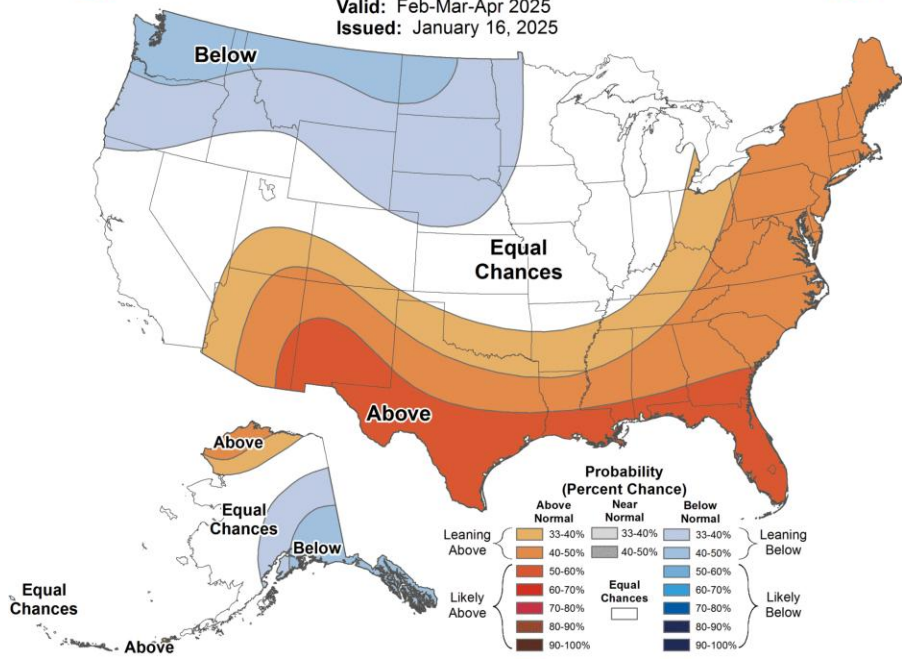
Monthly Precipitation Outlook

Valid: February 2025
Issued: January 31, 2025



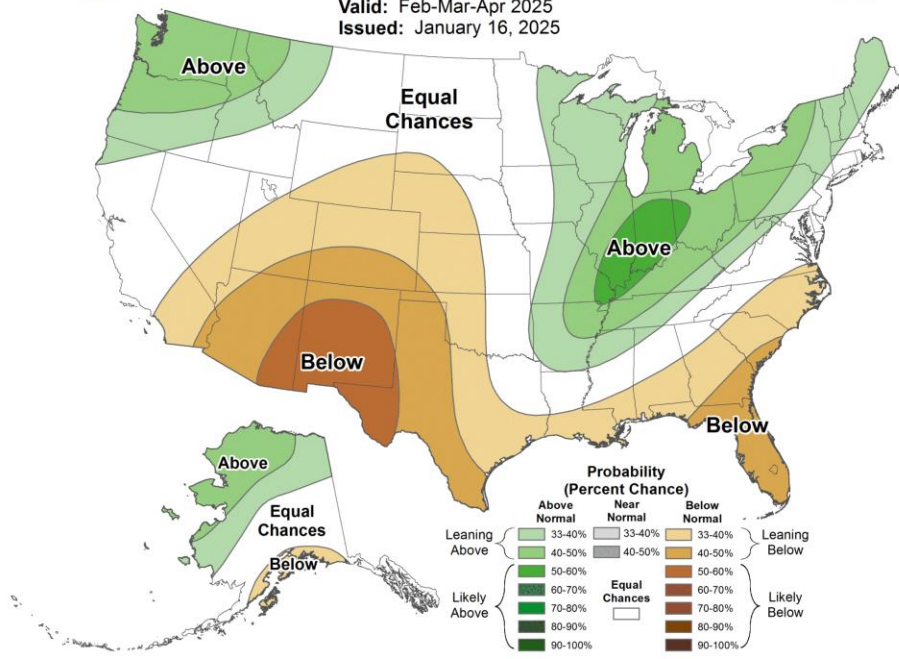
Seasonal Temperature Outlook

Valid: Feb-Mar-Apr 2025
Issued: January 16, 2025



Seasonal Precipitation Outlook

Valid: Feb-Mar-Apr 2025
Issued: January 16, 2025

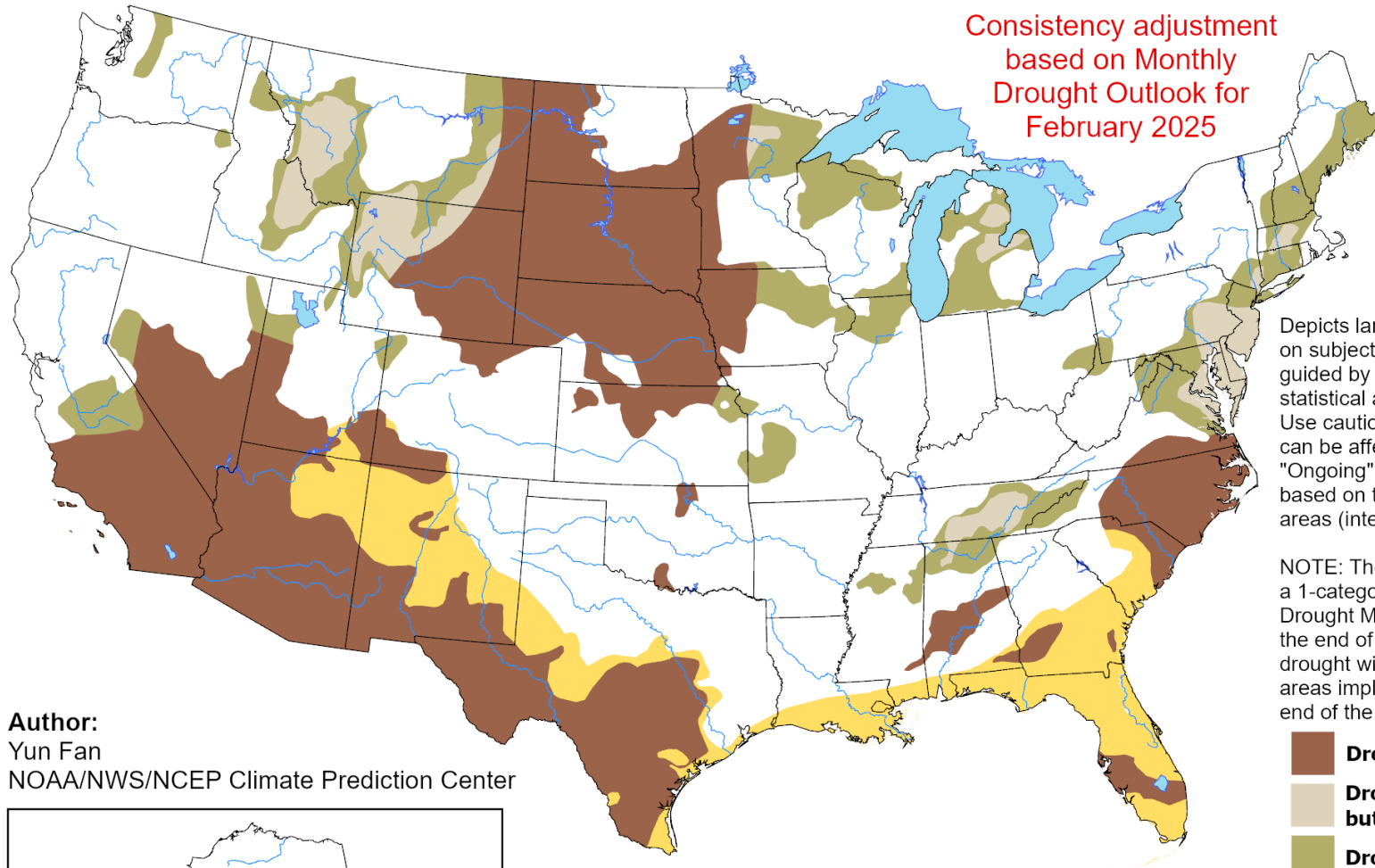


U.S. Seasonal Drought Outlook

Drought Tendency During the Valid Period

Valid for February 1 - April 30, 2025
Released January 31, 2025






Consistency adjustment
based on Monthly
Drought Outlook for
February 2025

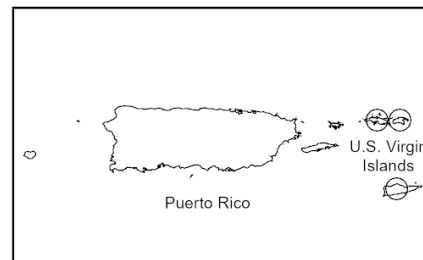
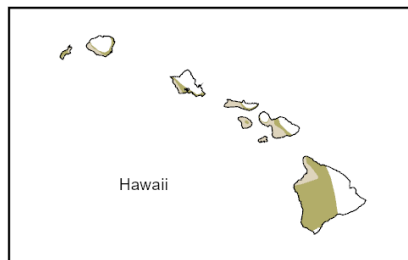


Depicts large-scale trends based on subjectively derived probabilities guided by short- and long-range statistical and dynamical forecasts. Use caution for applications that can be affected by short lived events. "Ongoing" drought areas are based on the U.S. Drought Monitor areas (intensities of D1 to D4).

NOTE: The tan areas imply at least a 1-category improvement in the Drought Monitor intensity levels by the end of the period, although drought will remain. The green areas imply drought removal by the end of the period (D0 or none).

Author:
Yun Fan
NOAA/NWS/NCEP Climate Prediction Center

-  **Drought persists**
-  **Drought remains, but improves**
-  **Drought removal likely**
-  **Drought development likely**
-  **No drought**



<https://go.usa.gov/3eZ73>