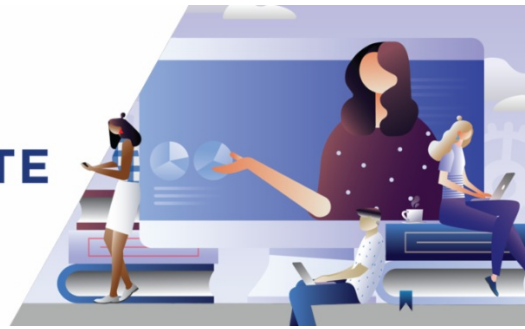


**2020**  
**summer INSTITUTE**  
FOR HYBRID AND VIRTUAL LEARNING



**Join Us | 8/6/20**

**Institute III: Inclusive Virtual Learning Environments**

*Presented by David Luhman*

**Virtual Access Only Via Zoom**

Providing equity and access to ALL students is a consistent challenge facing educators. It becomes an even greater struggle considering the difficulties presented through COVID-19. This session will support participants in preparing a continuum of services to meet the specific needs of students with disabilities and English language learners during virtual learning or hybrid settings. Participants will receive an overview of systems and practices necessary to deliver explicit, differentiated, and specially designed instruction. Particular attention will be given to sharing methods that enhance inclusivity including approaches to co-teaching and translanguaging that can be used across on-site and remote learning environments.

By the end of this session, participants will:

- learn practical approaches to teach established, research-informed learning strategies
- understand progress monitoring and its impact on instruction and student learning.
- understand translanguaging pedagogy and opportunities to leverage this practice.

Pricing:

Single sessions \$95 per person

Bundle of 3 sessions: \$225 per person

Bundle of 5 sessions: \$275 per person

Full Institute: 9 sessions \$450 person

Team of 3 attending a single session: \$225

Team of 5 attending a single session: \$275

Custom school-wide and district-wide bundles available contact [mwilson@swboces.org](mailto:mwilson@swboces.org)

Pricing will be adjusted after confirmed bundled enrollment.

Register through My Learning Plan

DATE & TIME

**August 6, 2020, 1:00pm - 4:00pm**

**Southern Westchester BOCES Center for Professional Development**  
450 Mamaroneck Avenue 3rd Floor, Harrison, NY 10528

*For more information, please contact David Luhman at (914) 345-8500*  
[DLuhman@swboces.org](mailto:DLuhman@swboces.org)

