



Property Features

- Spacious office near dense residential and business community
- Includes 2 designated offices, 13 large rooms, multiple bathrooms and kitchenette
- Card access entry door and security system
- Conveniently located off of Rt. 1 and I-95

Demographics			
	1 Mile	3 Miles	5 Miles
Population	8,730	52,934	74,524
No. of Households	2,925	17,196	23,142
Avg. HH Income	\$120,257	\$127,375	\$130,436
Daytime Population	1,868	15,745	20,656

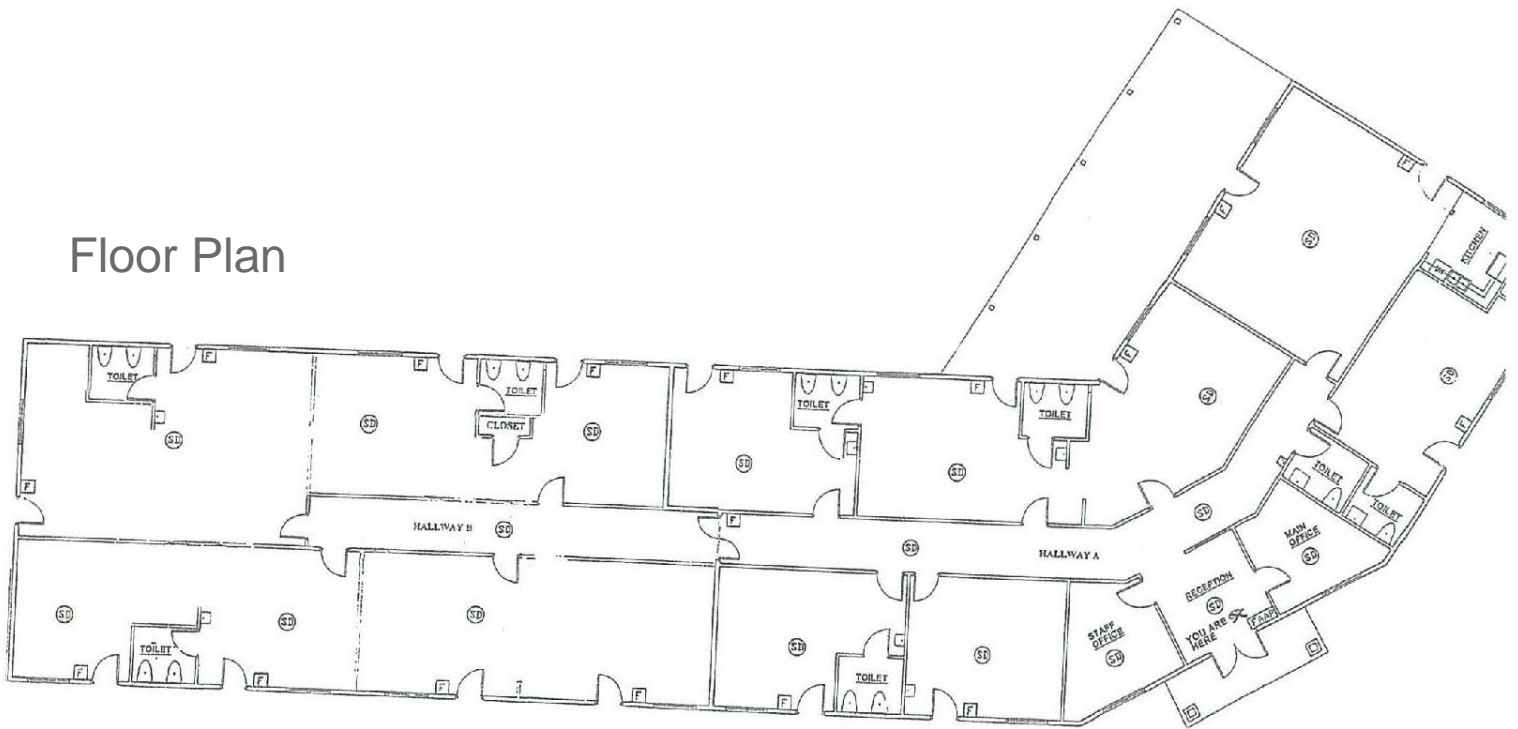
Specifications	
Available SF	9,500 SF
Rental Rate	\$17.00 PSF
Zoning	B2
Timing	Available immediately

For more information, contact:

VIRGIL NELSON, CCIM
 Senior Vice President
 540 322 4150
virgil_nelson@thalhimer.com

Eagle Village
 1125 Jefferson Davis Highway, Suite 350
 Fredericksburg, VA 22401-8449
www.thalhimer.com

Floor Plan



For more information, contact:

VIRGIL NELSON, CCIM
Senior Vice President
540 322 4150
virgil_nelson@thalhimer.com

Eagle Village
1125 Jefferson Davis Highway, Suite 350
Fredericksburg, VA 22401-8449
www.thalhimer.com



For more information, contact:

VIRGIL NELSON, CCIM
Senior Vice President
540 322 4150
virgil_nelson@thalhimer.com

Eagle Village
1125 Jefferson Davis Highway, Suite 350
Fredericksburg, VA 22401-8449
www.thalhimer.com

Independently Owned and Operated / A Member of the Cushman & Wakefield Alliance

Cushman & Wakefield | Thalhimer © 2015. No warranty or representation, express or implied, is made to the accuracy or completeness of the information contained herein, and same is submitted subject to errors, omissions, change of price, rental or other conditions, withdrawal without notice, and to any special listing conditions imposed by the property owner(s). As applicable, we make no representation as to the condition of the property (or properties) in question.