

2235
Sheppard Ave East



Suite 902B Model Suite

Tim Murray
Director, Leasing
T 416.497.7033
E tmurray@epicinvestmentservices.com

John Shields
Vice President, Leasing
T 416.558.9700
E jshields@epicinvestmentservices.com

EPIC Realty Services Inc., Brokerage
2225 Sheppard Avenue East, Suite 900
Toronto, Ontario M2J 5C2

ATRIA II

Epic
Investment
Services

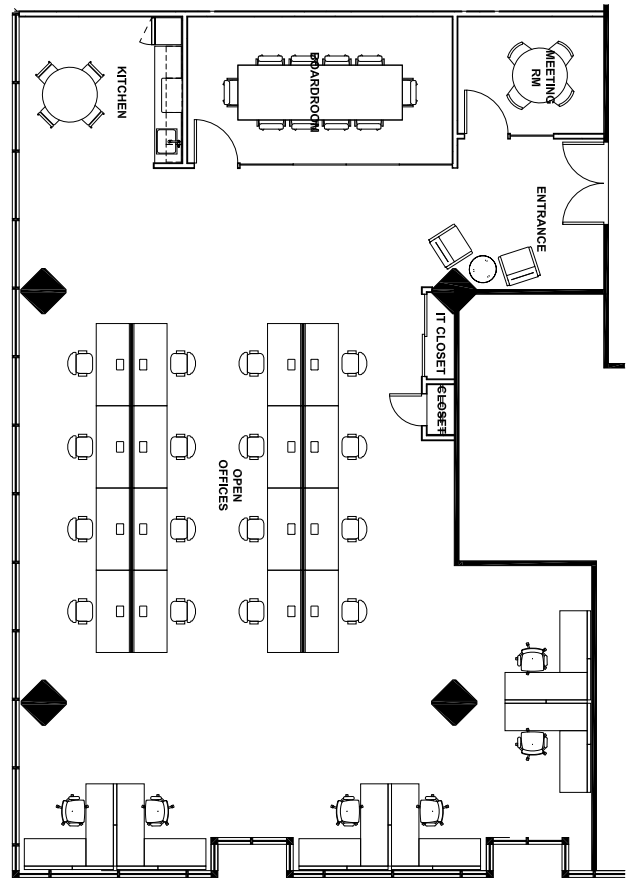
Experience Possibility

Suite 902B

Furnished Model Suite

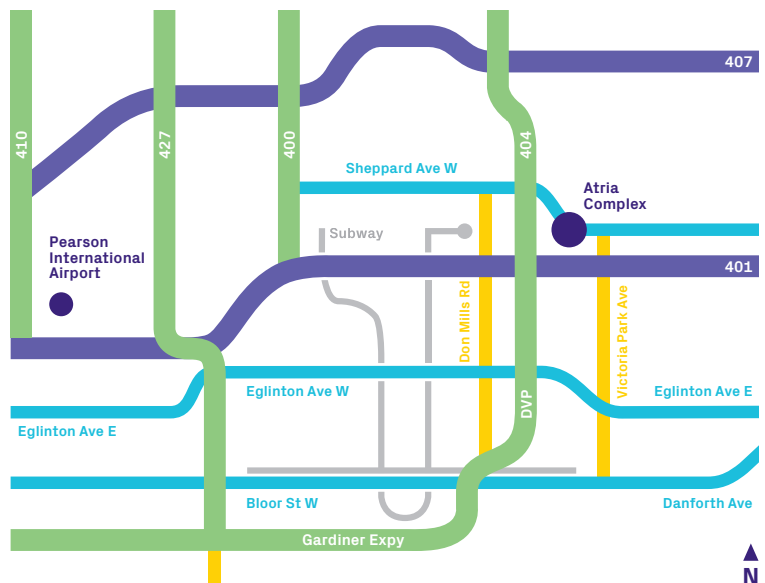
Suite 902B at Atria II features 2,708 square feet of built out space, fully furnished with brand new state of the art workstations and finishes.

- The Atria Complex is a premier Class A office campus located in close proximity to Highways 401, 404 and Don Valley Parkway, featuring a park like setting, several on-site amenities and abundant underground parking.
- Exceptionally efficient floor plates with low gross up factors (BOMA 1980 Standard)
- Dedicated shuttle bus to Don Mills subway station and Fairview Mall



Suite	Size (SF)	Type	Availability
902B	2,708	Office	Immediate

Operating Costs: \$13.75 psf | Realty Tax: \$4.80 psf
Utilities: \$1.23 psf | Total 2022 Additional Rent: \$19.78 psf



Tim Murray*
Director, Leasing
T 416.497.7033
E tmurray@epicinvestmentservices.com

*Broker

John Shields*
Vice President, Leasing
T 416.558.9700
E jshields@epicinvestmentservices.com

Updated: 01/22

All information contained herein is from sources deemed reliable; however, no representation or warranty is made to the accuracy thereof Epic Realty Services Inc., Brokerage