

JASSI Board of Directors

Honorary Board: **Tazuko Shibusawa**, Ph.D., LCSW, Executive
Officer, Shibusawa Eiichi Memorial Foundation

Board President: **Ryoko Mochizuki**, CBP, CCP, CPA, MBA, JD, Esq.,
President of Law Office of Ryoko Mochizuki
& Associates LLC (LORMA)

Board Treasurer: **Sayaka Araki**, CPA

Board Secretary: **Mayumi Iijima**, Esq., Law Offices of Mayumi
Iijima, P.C.

Board Members: **Koichi Aiba**, Flutist

Takashi Amano, Ph.D., MSW Assistant Professor,
Department of Social Work, Rutgers University
Newark

Hiroko Hatanaka, Former Vice President of IW
Group, New York

Monica Jenson, Executive Assistant, Brookfield
Asset Management

Yoshio Kano, Executive Secretary of Japanese
Medical Society of America, Inc.

Ayako Shida, Ikebana Artist & Floral Designer

Kozo Suzuki, Former KPMG LLP Principal and
U.S. Japanese Practice Area Leader of Northeast

Sayaka Takeda, Nomura Research Institute
America

Narumi Yoshida, CPA/PFS, CFP®, EA, Hara Yoshida
Accounting / Yoshida Wealth Management, Inc.



*45 Years of
Community Grass Roots Services*

100 Gold Street, Lower Level, New York, NY 10038
Phone: 212-442-1541 ext. 1 Email: info@jassi.org
www.jassi.org

Japanese American Social Services, Inc.
Requests the pleasure of your company at

The 45th Anniversary Benefit Dinner

Friday, October 2, 2026

The Yale Club of New York
Grand Ballroom, 20th Floor
50 Vanderbilt Ave, New York, NY 10017

Cocktails and Silent Auction at 5:30 PM
Followed by Entertainment,
Awards, and Dinner

*Black Tie Optional

Please RSVP by **September 10, 2026**

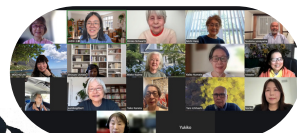


Mission Statement

The mission of JASSI is to improve the quality of life for people who are in needs, living in the New York metropolitan area as well as other areas by providing social services. JASSI provides services in both Japanese and English to people free of charge regardless of age or income, as they face problems with language barriers, cultural differences, and differences in service systems.



In-Person Tea Party



25th Anniversary
Remote Tea Part



Spring JASSI Report printed & mailed
support by MUFG Bank, Ltd.



Fall JASSI Report printed & mailed
support by KPMG LLP