



# TIGER

## S-3 Concrete Products Machine

### Mold & Height Change

# PATHFINDER



## S-3 Finished Producing 7-5/8 High 8" Block





**Opening Safety Locks**



**Removing Vee Belts**

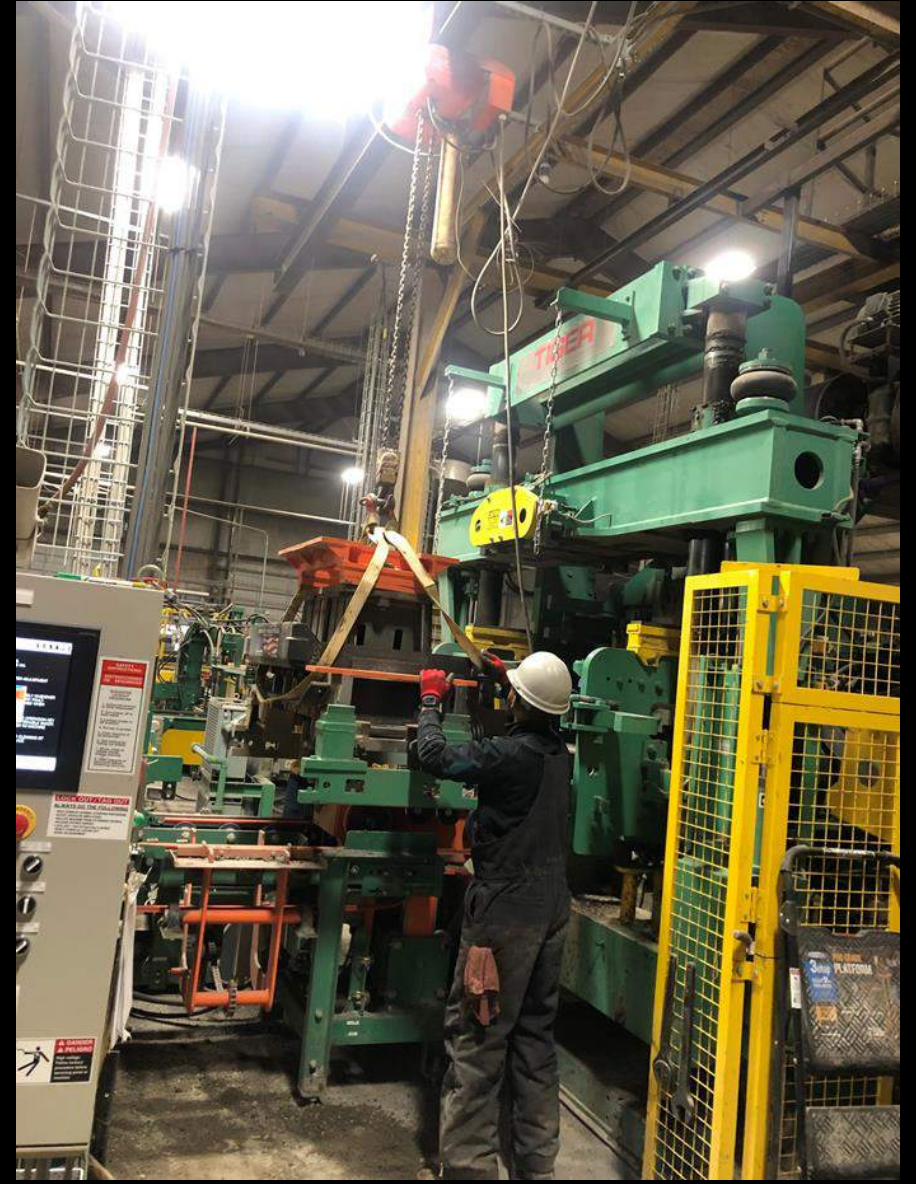




**Mold In Cradle  
Ready To Remove**



**Attaching Hoist To Mold**





Removing Mold



Ready For Height Change





**Lower Height Stop For 7-5/8" High Units**



**Upper Height Stop For 7-5/8" High Units**





## Removing Lower Height Stop





## Installing Lower Height Stop For 6" High Units





## Removing Upper Height Stop For 7-5/8" Units





## Installing Upper Height Stop For 6" High Units





**Upper & Lower Height Stops  
Replaced For 6" High Units**



**6" High Mold Ready To Install**





**S-3 Ready For New Mold**



**New Mold In Cradle And Being Installed**





**Closing Safety Locks**



**Re-Installing Vibrator Belts**





### S-3 Running 6" High Units



Mold and height change from 7-5/8" high to 6" high units. Notice that there are no adjustments to any of the machine strokes or to the height pins. The upper and lower stops are changed for each height product. They are different for 7-5/8" standard CMU and full 8" high retaining wall products. All the adjustment is done by the upper and lower height stops. This allows the operator to change heights quickly and accurately to make quality units and maximize operation time of the Model S



## Plant Pictures





## Happy Customer

