

Outbreak Control Plan

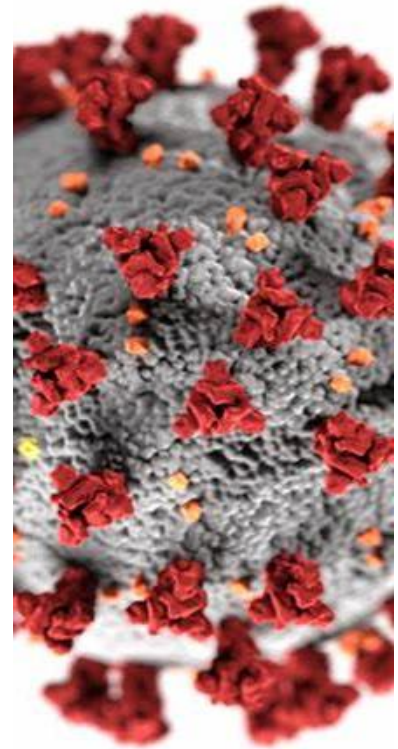
Royal Borough of Windsor & Maidenhead

Updated: 15 July 2020



Why do we need an Outbreak Plan?

- We want to keep our residents as safe as we can from COVID-19 until better treatments and/or a vaccine is available.
- The initial phase of COVID-19 was countrywide. As national restrictions are lifted, sporadic cases are likely which will need local action to prevent spread.
- Building on local knowledge and trusted partnerships our local plan adds to national programmes.



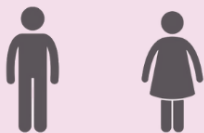


Windsor and Maidenhead

Our population on a page

Population: 150,906 (2018)

Demographics



49.6% 50.4%

0-64

65-84

85+



81.4%

15.7%

2.9%

(2018)

Deprivation



Among the least deprived districts/authorities in England

Employment

Statutory homelessness



80.4%

Unknown

Adult Lifestyle

Smokers



8.4%

Alcohol-related harm hospital admissions per year



696

Physically active adults



71.2%

58.7%

Estimated levels of excess weight



Life Expectancy

BF average

Most deprived areas compared to least deprived



81.5

84.7



5.1 yrs lower

2.9 yrs lower

Illness rates

*rate per 100,000

Under-75 mortality from cancer



112.0*

New STIs



612.2

Under-75 mortality from CVD



52.3*

TB incidence



8.0*

Estimated diabetes diagnosis rate



66.1*

Injury

Road deaths/injuries



38.3*

Hospital admissions for violence



32.5*

*rate per 100,000

Children and young people



Annual alcohol-specific hospital admissions among under-18s

7



7.9%

Children living in low income families



Estimated prevalence of mental health disorders in children and young people (5-16 years)

7.7%



Teenage pregnancy rate

8.7 per 1,000

Outbreak Control Plan Themes

1. Care homes and schools
 - Prevent and manage outbreaks in specific individual settings (e.g. schools, care homes)
2. High risk places, locations and communities
 - Prevent and manage outbreaks in other high-risk locations, workplaces and communities
3. Local testing capacity
 - Deploy local testing capacity optimally



Outbreak Control Plan Themes

4. Contact tracing in complex settings
 - Deliver contact tracing for complex settings and cohorts
5. Data integration
 - Access to the right local data to enable the other themes and prevent outbreaks
6. Vulnerable people
 - Support vulnerable people and ensure services meet the needs of diverse communities



Outbreak Control Plan Themes

7. Local Boards including Communication & Engagement
 - Take local actions to contain outbreaks and communicate with the general public

8. Workforce
 - Keeping our workforce safe



Managing risks locally

- COVID-19 does not travel on its own. It is transmitted largely in droplets, coughed out by people who are infected.
- Keeping a social distance, using tissues to catch coughs and sneezes and disposing of them safely, washing hands often and isolating infectious people are key protection measures to prevent spread.
- Some people seem more likely to catch COVID-19 or to become more sick as a result. These people need extra protection.



Managing risks locally

- Some settings are more risky, for example where infectious people are being cared for, where social distancing and isolation are more challenging or where there are people at particular risk of harm from COVID-19.
- It is likely that COVID-19 will be harder to spot and control in the winter and we need to be prepared.



Managing risks locally

In the Royal Borough we are developing focussed outbreak plans for a range of settings and population groups including:

- Schools
- Care Homes
- Residential settings
- Workplaces
- Transport
- Retail
- Places of worship
- Leisure facilities
- Vulnerable groups
- BAME communities
- People facing homelessness
- Tourism



What actions might be taken or recommended?

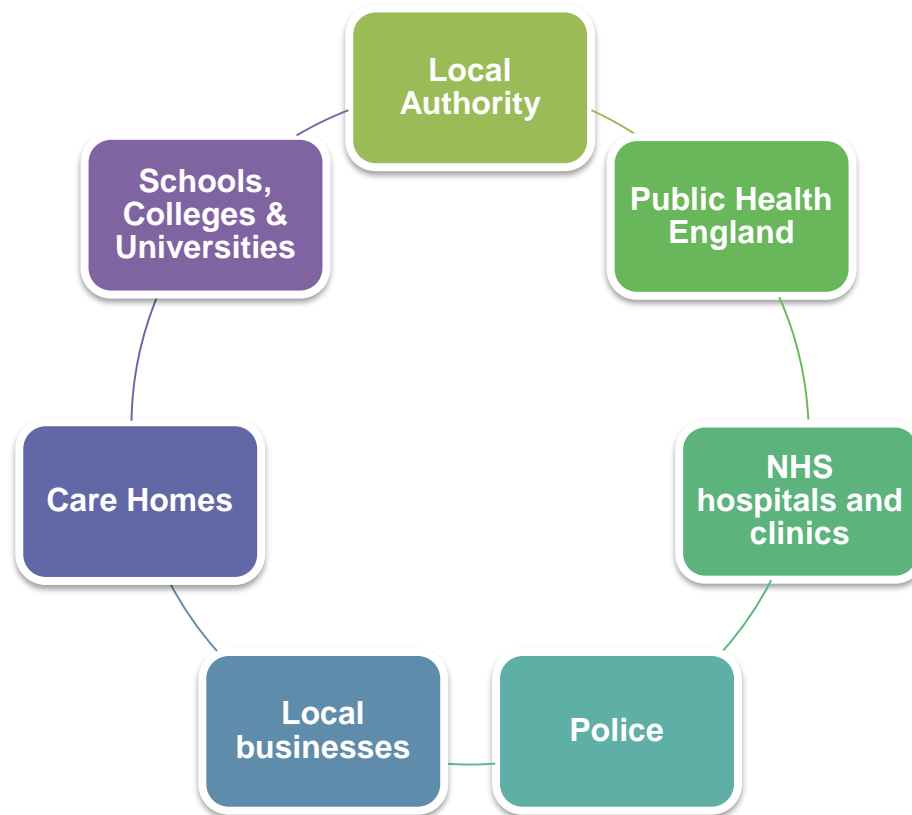
- Alert messaging
- Focussed testing of people with and without symptoms
- Special testing facilities set up
- Closure of premises
- Restricting visiting
- Cancelling events
- Closing playgrounds or other facilities
- Enhanced monitoring of people isolating
- Specific advice on PPE and infection prevention and control measures
- Contact tracing



How will we respond to an outbreak in the Royal Borough?

- We will watch data on cases and risks closely, so we spot outbreaks early.
 - We will support our residents to stay safe, encouraging handwashing, social distancing and isolation and assisting those who need help to comply.
 - The actions we take will be those most likely to be effective, based on evidence.
 - We will act swiftly to put local actions in place to support Public Health England's recommendations on controlling spread.
 - We will communicate with local people and organisations to help them keep safe.
-
-

Managing a local outbreak is a team effort

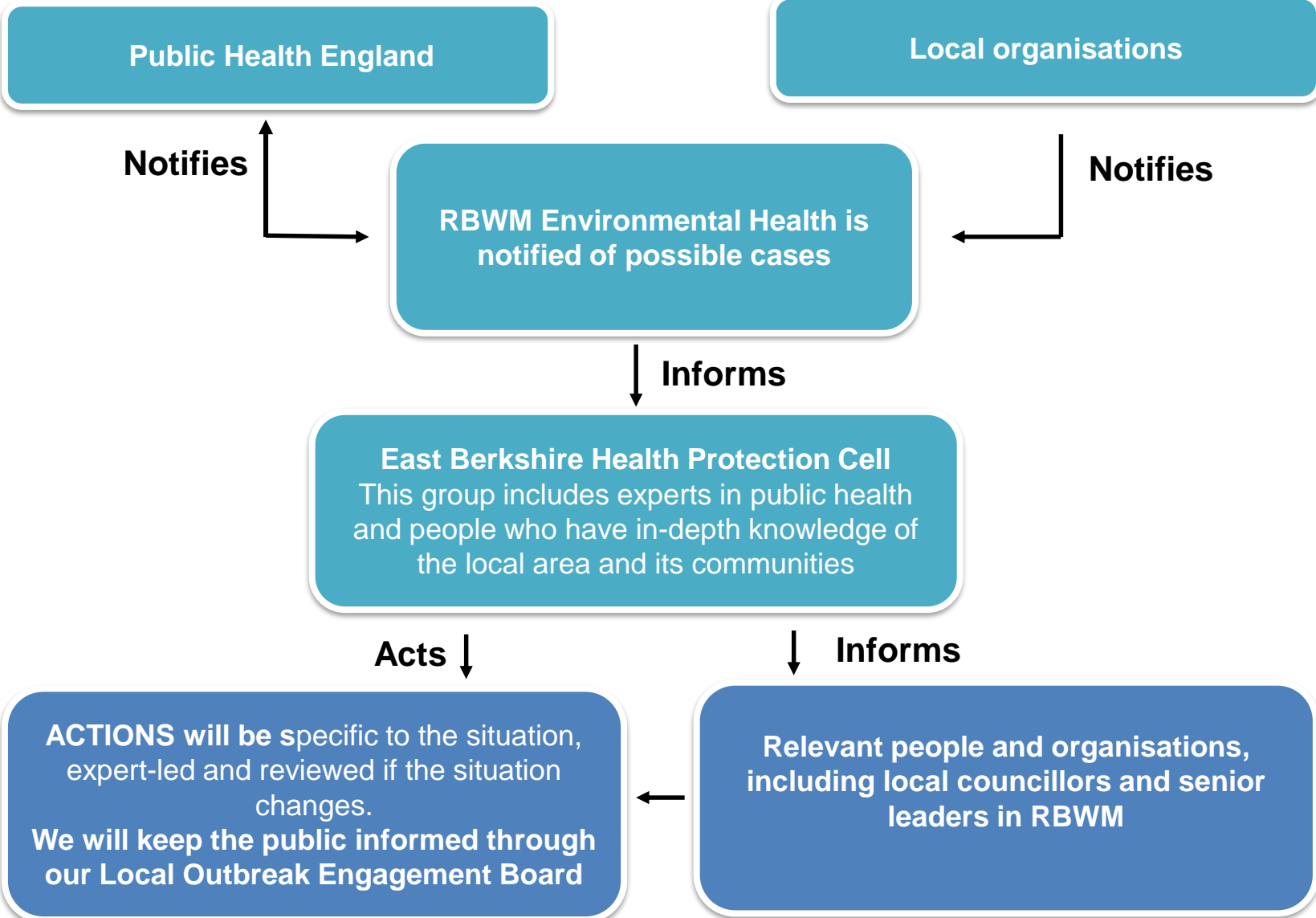


NHS Test & Trace

National Joint Biosecurity Centre

Thames Valley Local Resilience Forum

Outbreak notification and response



What if more action is needed?

RBWM GOLD Command will work with local Public Health England Health Protection teams to develop a local response and allocate resources

The local authority response team will help manage the local response

Thames Valley Local Resilience Forum will test plans and command & control arrangements to support actions across Berkshire

East Berkshire Health Protection Board will oversee the development of the outbreak control plan and deploy mobile testing units when necessary

South East Regional Oversight Group will share learning from one area to another, monitor outbreak management and oversee NHS Test & Trace

Action at a National level if needed

When to get in touch

If you are self-isolating or vulnerable and need help with shopping or medication delivery please contact the Community Response Hub on 020 3514 8117.

If you think someone has Covid-19 in your workplace, school or other setting please contact the council on 01628 683820 (Monday – Friday 9am-5pm) and for urgent referrals on Saturday and Sunday between 9am to 5pm please email Env.Health@RBWM.gov.uk

**If you have symptoms, stay home and contact
NHS Test & Trace to get tested:**

www.nhs.uk/coronavirus or call 119 if you have no internet
access

Communication with residents

- Our outbreak engagement board will be held every month, and more often if needed, involving local councillors accountable to the public.
- We will keep our website up to date with the latest information and guidance.
- We will use social media to spread the word.
- We will work with services, businesses and organisations to make sure information is clear and accurate.
- We will make information available in accessible formats and languages other than English.



Governance

- Overseen by our two Berkshire Health Protection Boards, key partners will work together to control spread locally.
- Our Local Outbreak Engagement Board will listen and keep the public informed about COVID-19.
- The Thames Valley Local Resilience Forum will put Command and Control arrangements in place to act across a broader geography if needed.
- The South East Regional Oversight Group will help us learn from other areas.



Next steps for the Royal Borough of Windsor and Maidenhead Outbreak Control Plan

Refine

Refine the plan with partners



Adapt

Adapt the plan as we learn more about COVID-19 and local outbreaks



Review

Review our plans alongside new national programmes such as the Joint Biosecurity Centre