

**VRC***Protx*

sales@vrcprotx.com



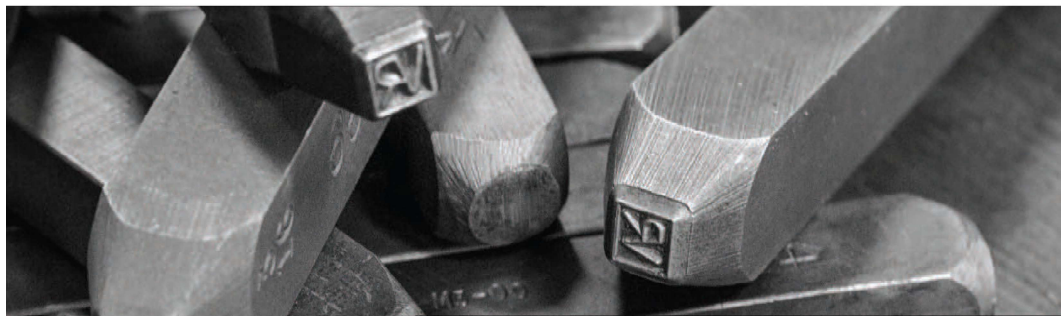
**LESER**

**LARC**



LESER Authorized Repair Center

# Safety & Relief Valve Service



**VRC***Protx*

117 Commerce Drive  
Evanston, WY 82930  
307-789-2478

sales@vrcprotx.com

800-941-4331

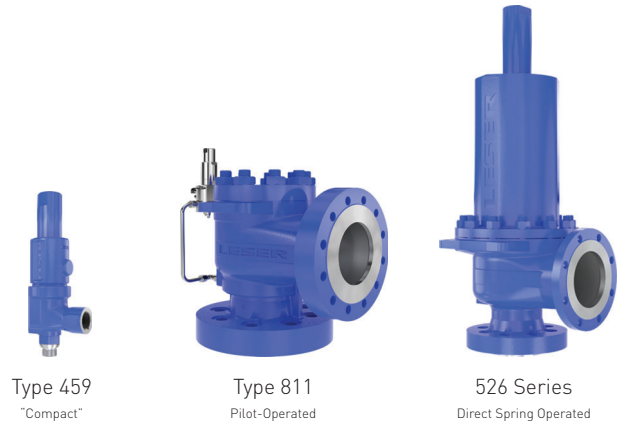
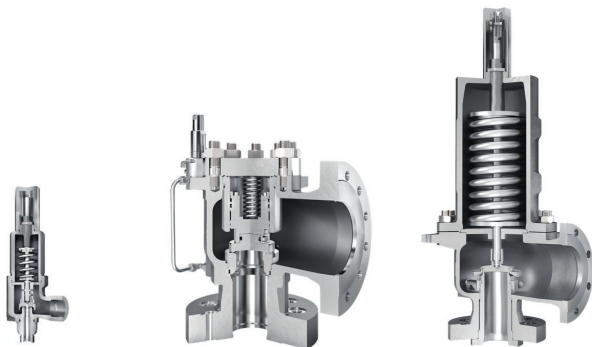
# Safety & Relief Valve Service

## VRC **Prot**x

Operating in concert with our long standing "VR" Valve Repair program for all **ASME Code** ("V", "UV") safety, safety/relief and pressure relief valves for all pressures, sizes and services, for **All Brands** and for **All Types**, models (current or obsolete), we are also proud to be a **LESER** Authorized Service Center ("**LARC**"). We are fully equipped to provide expert certified testing, **Repair** recertification, evaluation or inspection, troubleshooting, **New Valve Replacement** and all related pressure relief valve service. **Spare Parts Always on Hand, Local** or at **LESER** in Charlotte, NC (same day ship).


**In-House Repair**, rush or routine work, preventative maintenance, asset management, **On-Site** (short and long term as needed) or **Emergency Service 24/7**.





800-941-4331



**LESER** Authorized Repair Center

representative samples only

TESTED & REPAIRED BY:		
<b>VRC Prot</b> x		
MODEL	BP	501
SET PRESSURE	VR0 (S/N)	
CDTP	TECHNICIAN	
CAPACITY	SCFM, GPM or LBS/HR	
DATE		
VALVE TAG		

		Tag		
Type	Size	Serial no.		
Flow area	mm <sup>2</sup> d <sub>0</sub>	mm	Seat	
	Set p.	Back p.	CDTP	
bar			Temp.	
psi				
TÜV-SV	Lift	mm	ISO4126	ASME-Cap.
	Steam		%	lbs/hr
Date	Gas		%	SCFM
	Liquid		%	GPM

## VRC **Prot**x

117 Commerce Drive  
Evanston, WY 82930  
307-789-2478

[sales@vrcprotx.com](mailto:sales@vrcprotx.com)

[www.vrcprotx.com](http://www.vrcprotx.com)