

FOR SUBLEASE 13,624 SF OFFICE SPACE

# 515 LEGGET DRIVE

Ottawa, ON



Located in the Kanata North Technology Park



## FULLY FURNISHED PLUG & PLAY OFFICE SPACE

Discover a plug & play workspace at 515 Legget Drive in Kanata North. This bright, modern office comes complete with furniture for up to 74 workstations, offering a seamless move-in experience.

# BUILDING HIGHLIGHTS

**13,624 SF**

Divisible to 9,586 SF

**CONVENIENCE**

Close to BrookStreet Hotel & Marshes Golf Club

**VIEWS**

Marshes Golf Course

**FREE PARKING**

Allotment included in the lease

**EXPOSURE**

From the elevators

**OCCUPANCY**

Flexible

**SUBLEASE**

Term Ends March 31, 2029

**NET RENT**

Contact Agents

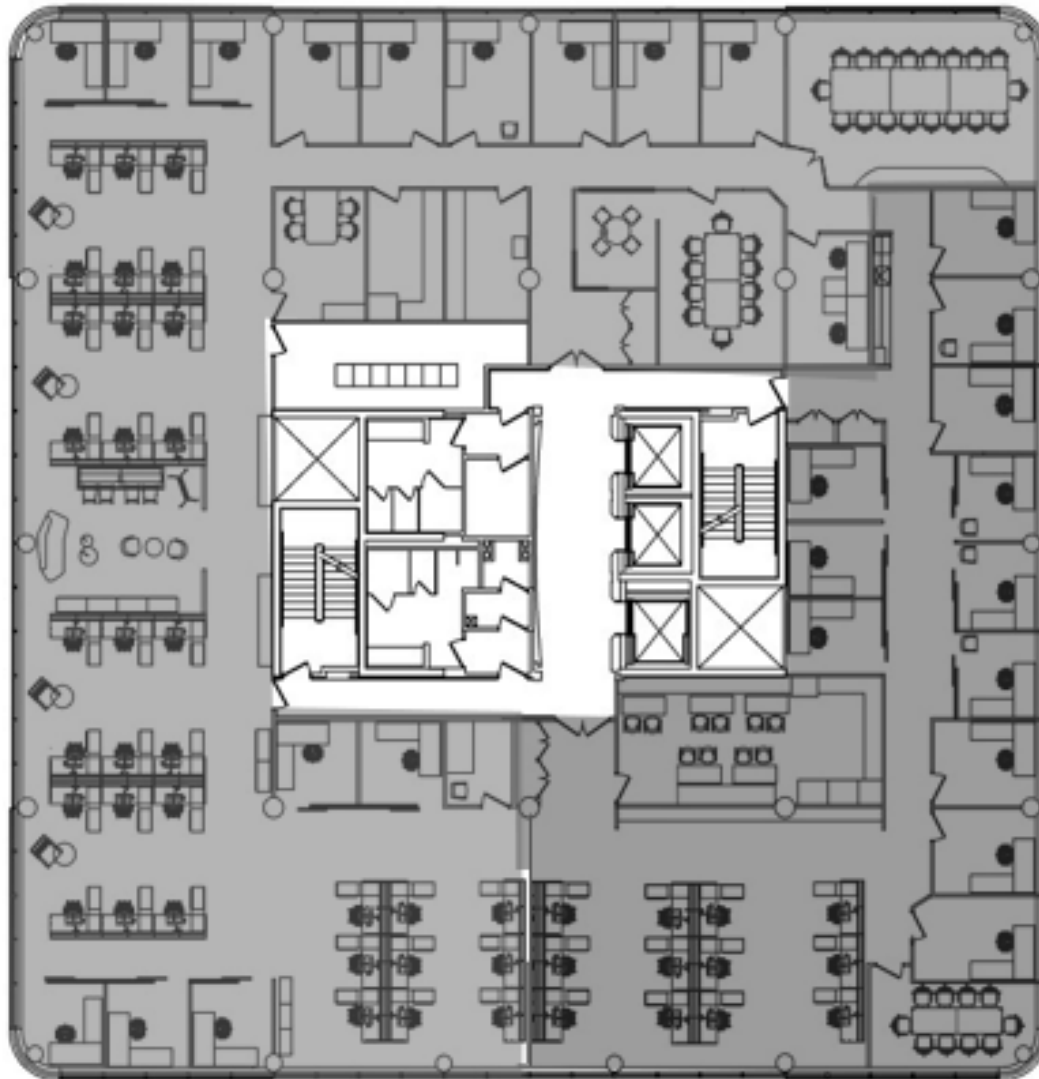
**ADD'L RENT**

\$16.55 PSF (2023 est.)



# THE FLOOR PLAN

**Suite 600: 13,624 SF—divisible to 9,586 SF**



**74**

**WORKSTATIONS**

**2**

**MEETING ROOMS**

**1**

**LARGE BOARDROOMS**

**XX**

**KITCHENETTE**

# THE LOCATION

**Scenic Surroundings:** Enjoy green spaces and amenities right at your doorstep.



**FOR MORE INFORMATION, PLEASE CONTACT:**

**Peter Earwaker**  
**Senior Sales Representative**  
**+1 613 780 1580**  
**pearwaker@cwottawa.com**

**55 Metcalfe Street**  
**Suite 400**  
**Ottawa, ON K1P 6L5 | CANADA**  
**[www.cwottawa.com](http://www.cwottawa.com)**

*Brokerage, Independently Owned and Operated*



©2025 Cushman & Wakefield Ottawa. Brokerage, Independently Owned and Operated. All rights reserved. The information contained in this communication is strictly confidential. This information has been obtained from sources believed to be reliable but has not been verified. NO WARRANTY OR REPRESENTATION, EXPRESS OR IMPLIED, IS MADE AS TO THE CONDITION OF THE PROPERTY (OR PROPERTIES) REFERENCED HEREIN OR AS TO THE ACCURACY OR COMPLETENESS OF THE INFORMATION CONTAINED HEREIN, AND SAME IS SUBMITTED SUBJECT TO ERRORS, OMISSIONS, CHANGE OF PRICE, RENTAL OR OTHER CONDITIONS, WITHDRAWAL WITHOUT NOTICE, AND TO ANY SPECIAL LISTING CONDITIONS IMPOSED BY THE PROPERTY OWNER(S). ANY PROJECTIONS, OPINIONS OR ESTIMATES ARE SUBJECT TO UNCERTAINTY AND DO NOT SIGNIFY CURRENT OR FUTURE PROPERTY PERFORMANCE.



**CUSHMAN &  
WAKEFIELD**  
**Ottawa**