



UNIT 8: 720 SF

UNIT 18: 1,002 SF

Available Units

Unit 18: **1,002 SF** | Available January 1, 2027

Unit 8: **720 SF** | Available Immediately

NET RENT: \$22.00 PSF

ADDITIONAL RENT: \$11.42 PSF

Potential Tenants

Medical Clinic

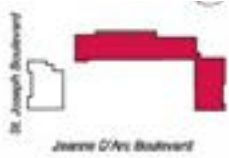
Bakery

Martial Arts Studio

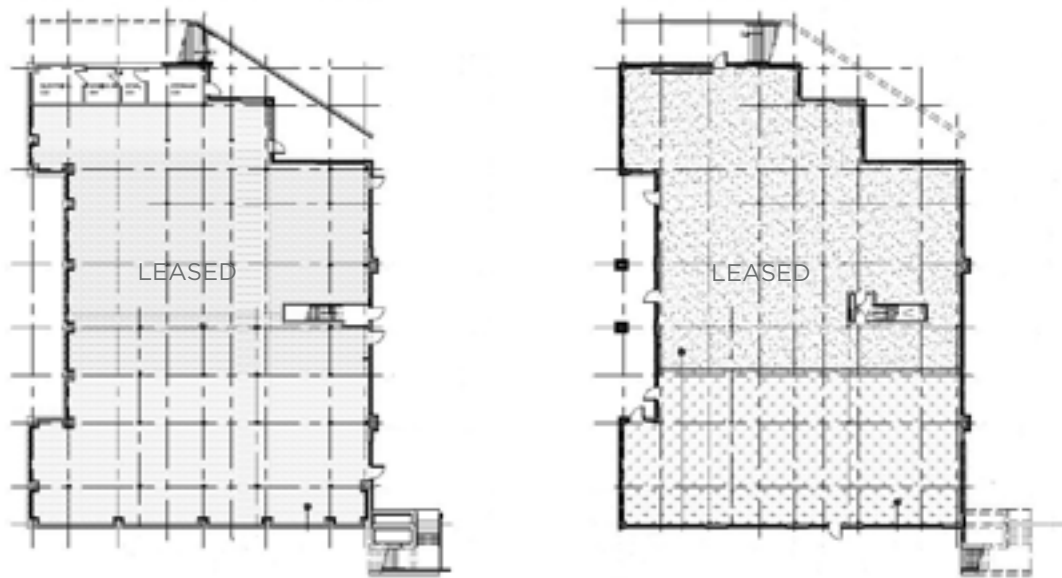
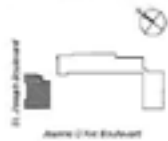
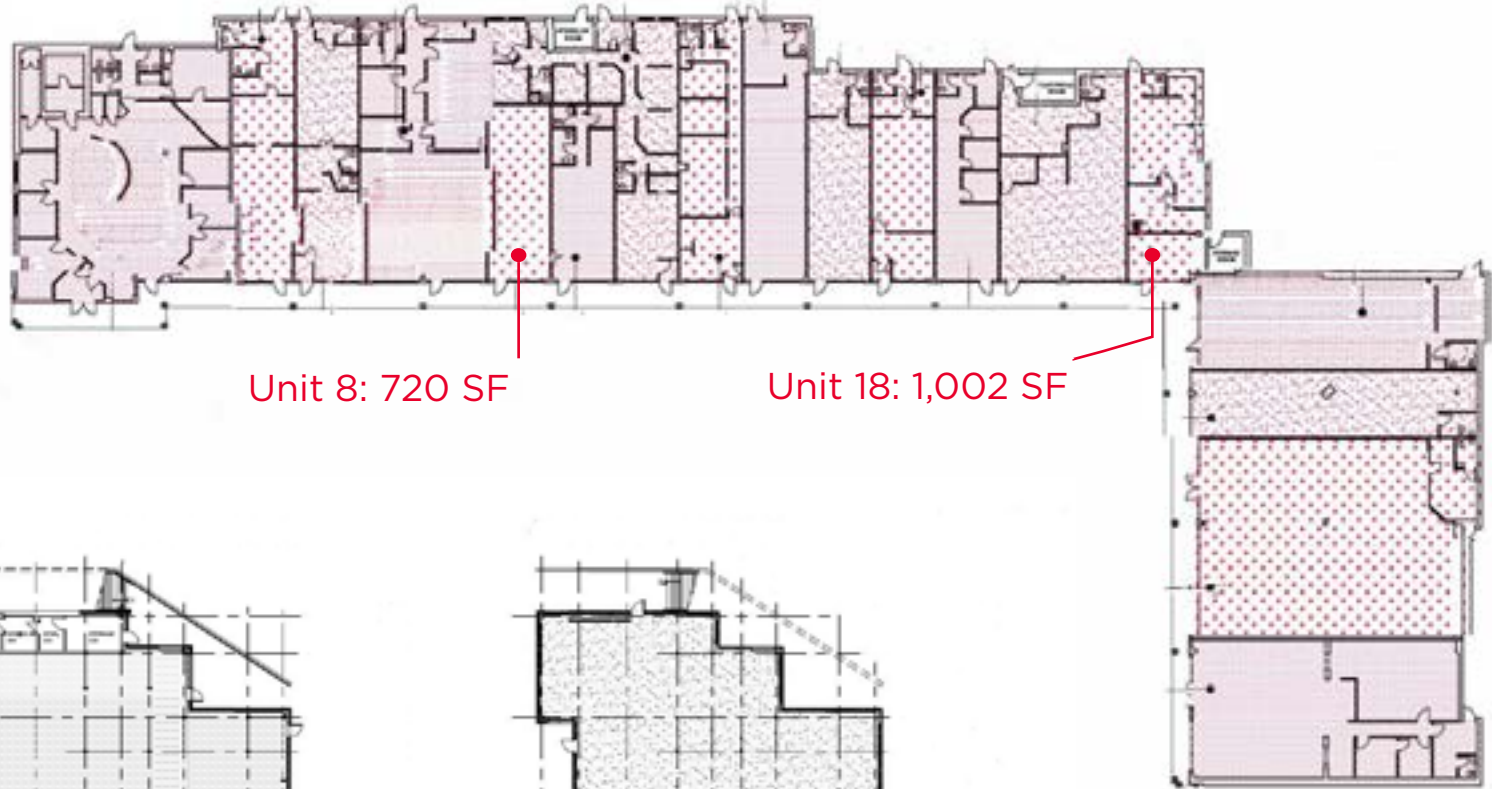
Restaurant

Professional Services

Specialty Retailers



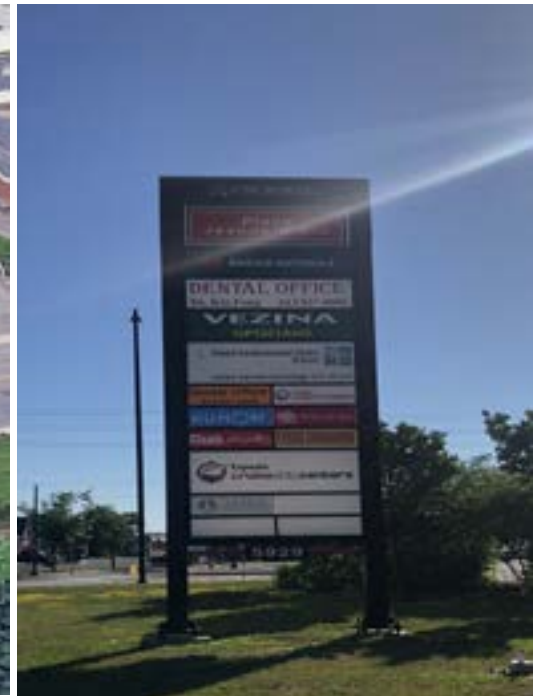
Building 1



Neil Mason
Vice President
Sales Representative
+1 613 780 1571
nmason@cwottawa.com

LOCATION

Place Jeanne D'Arc is located in Ottawa's east end suburb of Orleans. The plaza is located just off the first Queensway exit as you enter Orleans at the intersection of the two prominent suburban roads Jean D'Arc and St. Joseph Boulevard. The high profile corner location provides excellent exposure to vehicular traffic and public transit is located directly in front of the plaza. The plaza is in close proximity to many primary and secondary schools, businesses and one major regional mall. Within a 5 km radius of the plaza there are over 100,000 residence and 52.3% of households have a household income of over \$100,000.



Neil Mason
Vice President
Sales Representative
+1 613 780 1571
nmason@cwottawa.com

55 Metcalfe Street
Ottawa ON K1P 6L5
T +1 613 236 7777
F +1 613 236 5958
cwottawa.com