



SAFETY PAGES

July 2020
Safety Pages:

Welding Safety P. [2-3](#)

Chainsaw Safety..... P. [4-5](#)

Radial Arm Saw Safety P. [6-7](#)

Striking Tool Safety..... P. [8-9](#)

Remember if you have any safety suggestions, questions or concerns please let us know. In addition, if you have a safety topic that you would like covered in a Safety Page for training purposes let us know and we will develop one. Topics to our inventory of monthly Safety Pages are continually being added.



The OHBA/SAIF Safety Pages are an ongoing series of pages, designed to provide a selection of safety topics each month to OHBA members. Please use these pages to add to (or start) either a Safety Committee file or manual for your company. Some of the Safety Pages will be on general topics and others will be for Owner/Supervisors. The Owner/Supervisor Safety Pages will be on topics based more on compliance or suggested management safety practices.

IMPORTANT NOTICE OF RESPONSIBILITY

The Oregon Home Builders Association Safety Committee's purpose is to provide safety guidelines, information and resources to help our members work more safely and reduce jobsite accidents. Full and active monthly participation in safety meetings using the OHBA Safety Committee's agendas, topics and checklists will only meet safety committee requirements. It remains your responsibility to comply with all aspects of safety rules and regulations.

Brad Nanke, Oregon Home Builders Association, Safety Consultant
2075 Madrona Ave. SE STE. 150, Salem, Oregon 97302 541.971.6669 cell 503.362.5120 fax www.oregonhba.com

OHBA Safety Pages: Welding Safety

Do not wear any clothing that has been contaminated with oil, grease, gasoline or other flammable or hazardous materials!

- **Wear a welding helmet or face shield with correct shade of filter for type of welding.**
- **Wear safety glasses with side shields under your welding helmet.**
- **Wear dry, hole-free and approved leather welding gloves.**
- **Wear head and ear protection to protect your head and ears from hot sparks and slag.**
- **Wear a flame-retardant shirt or jacket with cuffless pants and high top work boots.**
- **Wear approved respirator when needed due to type of welding being done – hazardous welding fumes; i.e. Hexavalent Chromium.**



The information we provide is not intended to include all possible safety measures and controls. In addition, the safety information we provide does not relieve the Members of its own duties and obligations with regard to safety concerns, nor does Oregon Home Builders Association guarantee to the Members or others that the Member's property, job sites and/or operations are safe, healthful, or in compliance with applicable laws, regulations or standards. The Members remain responsible for their own operations, safety practices and procedures and should consult with legal counsel as they deem appropriate.

SAFETY PAGE MEETING GUIDE

Topic: Welding Safety

Employer: _____ Project: _____

Date: _____ Time: _____ Shift: _____

Number in crew: _____ Number attending: _____

Safety or Health issues discussed. Include recent accident investigations and hazards involving tools, equipment, the work environment, work practices and any Safety or Health recommendations:

Follow up on recommendations from last safety meeting:

Record of those attending:

Name: (please print)	Signature:	Company:
1.		
2.		
3.		
4.		
5.		
6.		
7.		
8.		
9.		
10.		
11.		
12.		

Supervisor's remarks: _____

Supervisor: _____ (Print) _____ (Signature)

OHBA Safety Pages: Chainsaw Safety

Safe Use of Chainsaws in Construction

- Chainsaws for construction must be equipped with a chain brake and with anti-kickback chain.
- Whether a chainsaw is electric- or gasoline powered, operators must follow the manufacturer's recommended safe operating procedures.
- Permit only trained and experienced workers to operate a chainsaw.
- Never walk around with a saw in the operating mode. Switch off the power source.
- Do not attempt to cut anything other than wood with a chainsaw.
- When operating a chainsaw, safety glasses and hearing protection must be worn at all times.
- Face shield and hard hat may also be required, depending on the hazards.
- Trousers or chaps with ballistic nylon pads sewn in provide protection to the legs.
- Hold the saw securely with both hands, with fingers and thumbs around the handles. This helps prevent the hands from being dislodged and provides control in the event of a kickback.
- Do not operate the saw when you are tired.
- Know where the bar tip is at all times.
- Don't allow the cut to bind (close) on the saw chain.
- Make sure the chain brake is functioning.

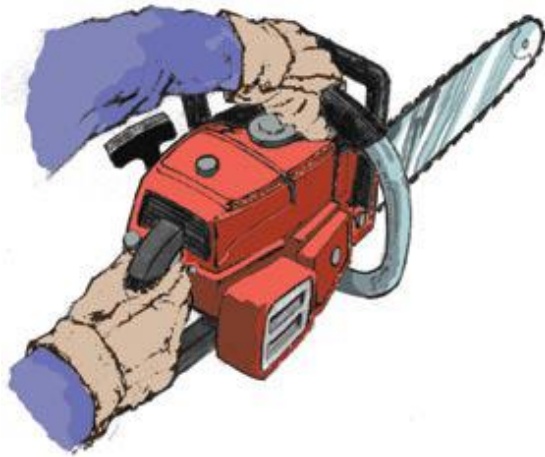
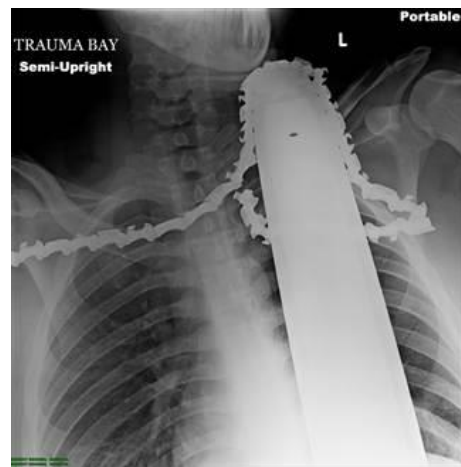


Diagram showing proper grip of a chainsaw



The Result of a kick-back and chain break



The information we provide is not intended to include all possible safety measures and controls. In addition, the safety information we provide does not relieve the Members of its own duties and obligations with regard to safety concerns, nor does Oregon Home Builders Association guarantee to the Members or others that the Member's property, job sites and/or operations are safe, healthful, or in compliance with applicable laws, regulations or standards. The Members remain responsible for their own operations, safety practices and procedures and should consult with legal counsel as they deem appropriate.

SAFETY PAGE MEETING GUIDE

Topic: Chainsaw Safety

Employer: _____ Project: _____

Date: _____ Time: _____ Shift: _____

Number in crew: _____ Number attending: _____

Safety or Health issues discussed. Include recent accident investigations and hazards involving tools, equipment, the work environment, work practices and any Safety or Health recommendations:

Follow up on recommendations from last safety meeting:

Record of those attending:

Name: (please print)	Signature:	Company:
1.		
2.		
3.		
4.		
5.		
6.		
7.		
8.		
9.		
10.		
11.		
12.		

Supervisor's remarks: _____

Supervisor: _____ (Print) _____ (Signature)

OHBA Safety Pages: Radial Arm Saw Safety

Safe Use of Radial Arm Saws

- Permit only trained and experienced workers to operate a saw.
- Wear proper eye and hearing protection, and when required, respiratory protection.
- A radial arm saw cutting table must be of sufficient width so that no part of the saw blade overhangs the forward edge of the table. A stop may also be used to limit forward travel of the saw to prevent overhang.
- Saws must not be operated at speeds in excess of the manufacturer's recommendation.
- Only use accessories designed for the saw and recommended by the manufacturer.
- Make sure the blade guard is in place and properly adjusted.
- Stand on the handle side of the saw when cross cutting.
- Return the saw blade to behind the fence after each cut.
- Make sure the overall length of the saw table (both infeed and outfeed) is twice the length of the lumber being cut.
- Make sure during ripping that material is fed counter to the saw blade rotation.
- The motor head must be locked into position at the correct height and desired angle.
- Clamp stock to the table when making miter, bevel, or compound miter cuts. This overcomes the tendency of the stock to slide along the fence.
- Turn off the saw and unplug the electrical cord when making changes.
- When it is necessary to measure stock on the cutting table, the saw must be turned off until measuring is complete.
- Do not use radial arm saws for ripping unless spreader and anti-kickback devices are used.
- During operation, do not remove your hand from the operating handle unless the cutting head is behind the fence.
- Do not remove the stock from the cutting table until the saw blade has been returned to its position behind the fence.
- Do not cut "free-hand". The material to be cut must lie solidly on the cutting table against the back guide.
- Do not use any circular saw blade having a crack exceeding 1/10 of the saw diameter or any circular saw blade with cracks adjacent to the collar line.



The information we provide is not intended to include all possible safety measures and controls. In addition, the safety information we provide does not relieve the Members of its own duties and obligations with regard to safety concerns, nor does Oregon Home Builders Association guarantee to the Members or others that the Member's property, job sites and/or operations are safe, healthful, or in compliance with applicable laws, regulations or standards. The Members remain responsible for their own operations, safety practices and procedures and should consult with legal counsel as they deem appropriate.

SAFETY PAGE MEETING GUIDE

Topic: Radial Arm Saw Safety

Employer: _____ Project: _____

Date: _____ Time: _____ Shift: _____

Number in crew: _____ Number attending: _____

Safety or Health issues discussed. Include recent accident investigations and hazards involving tools, equipment, the work environment, work practices and any Safety or Health recommendations:

Follow up on recommendations from last safety meeting:

Record of those attending:

Name: (please print)	Signature:	Company:
1.		
2.		
3.		
4.		
5.		
6.		
7.		
8.		
9.		
10.		
11.		
12.		

Supervisor's remarks: _____

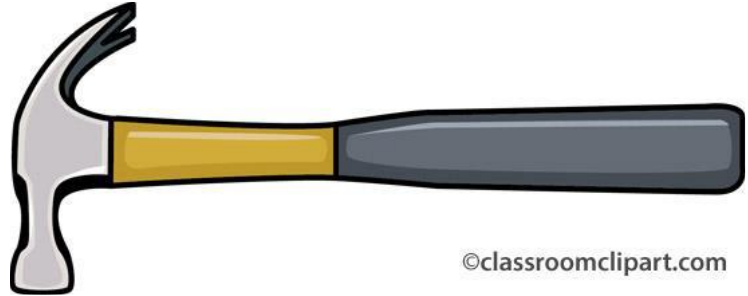
Supervisor: _____

(Print)

(Signature)

OHBA Safety Pages: Striking Tool Safety

- **Always wear approved eye protection (Z-87).**



- **Do not use striking tool if head or striking area is mushroomed, dented, chipped, cracked or has excessive wear.**

- **Do not use a striking tool if handle is loose, cracked, splintered, or has excessive wear.**

- **Strike with a square blow with the striking surface parallel to the surface being struck. Always avoid glancing blows and over or under strikes.**

- **Keep other workers clear of the work area.**

- **Survey the area or material you wish to use the striking tool on. Check for hazards or defects in the material or area.**



regulations or standards. The Members remain responsible for their own operations, safety practices and procedures and should consult with legal counsel as they deem appropriate.

The information we provide is not intended to include all possible safety measures and controls. In addition, the safety information we provide does not relieve the Members of its own duties and obligations with regard to safety concerns, nor does Oregon Home Builders Association guarantee to the Members or others that the Member's property, job sites and/or operations are safe, healthful, or in compliance with applicable laws,

SAFETY PAGE MEETING GUIDE

Topic: Striking Tool Safety

Employer: _____ Project: _____

Date: _____ Time: _____ Shift: _____

Number in crew: _____ Number attending: _____

Safety or Health issues discussed. Include recent accident investigations and hazards involving tools, equipment, the work environment, work practices and any Safety or Health recommendations:

Follow up on recommendations from last safety meeting:

Record of those attending:

Name: (please print)	Signature:	Company:
1.		
2.		
3.		
4.		
5.		
6.		
7.		
8.		
9.		
10.		
11.		
12.		

Supervisor's remarks: _____

Supervisor: _____ (Print) _____ (Signature)