



# Back to School Night 2020

School Board, President Sara Vanis

PTO Presidents, Diane McCullough and Nicole Anido

Principal, Jennifer Ramirez



# Updated Remote Learning Schedules

## New Schedule Starting October 5

TK

- ★ Small Class Size
- ★ Short Lessons/Frequent Breaks
- ★ Half day, everyday. Ended by 11:30
- ★ Optional Auxiliary Classes in the afternoon
- ★ Short Directed instruction times (20 minutes or so)



# Grades K-3

## ★ Alternate Day Schedule

- Direct Instruction Day for Core Classes
  - Teach in small increments with breaks
  - Day ends at noon
- Guided Learning Day is for Auxiliary Classes
  - Auxiliary classes give structure to the day
  - Grades 2 and 3 will have an assignment sheet
  - All grades have a TA lesson

## ★ A note about Auxiliary Classes for all grades

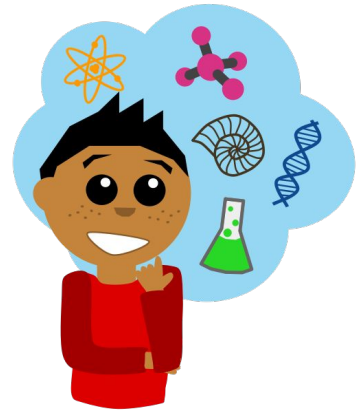


# Grades 4-5

- ★ Full Schedule each day with core classes and auxiliary classes
- ★ Frequent breaks
- ★ Hour long lunch Break
- ★ Use TA for lots of small group activities
- ★ No Homework except for possibly reading for 20-30 minutes and finishing classwork
- ★ The Teacher meets with each group separately at least once per day.
- ★ The day ends at 2 pm unless there is an Auxiliary Class.



# Grades 6-8



- ★ Full Schedule each day with core classes and auxiliary classes
- ★ Utilize strategies to continue to work with small groups.
- ★ Teaching for half the time
- ★ Complete work for other half
- ★ Auxiliary classes will always meet with the full group
- ★ No Homework (classwork may require additional time)
- ★ May still assign long term projects.



# Transition Back to Campus-Draft

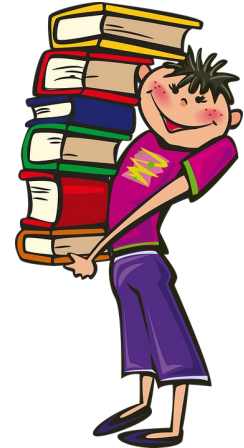
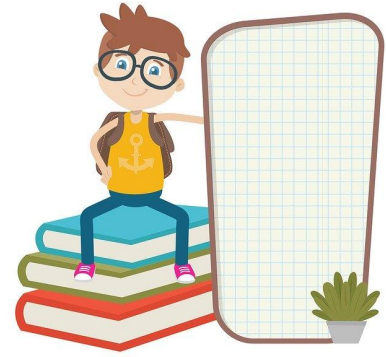
(Planning in process)

- TK- All students in the TK classrooms
- Grades K-5
  - All students on campus
  - Remain in Groups 1 and 2
  - Use the Ministry Building
  - Learning Commons, Art Room, Faculty Room, Music Room
- Junior High
  - Remain in Groups 1 and 2
  - Only one group on campus each day
  - All students “in class” each day



# How Can You Help?

- Submit your child's attendance
- Is your child turning in their work?
- Remove distractions from their work space
- Communicate with the teacher for questions or concerns



# Collaboration for our Students

Unprecedented times.

For us teaching online.

For you homeschooling.





**Direct Instruction** is the day that your child's group is online with the teacher. This day starts at 8:10 am and will be directed by the teacher. There will be offline time to work and complete assignments but your child will be directed by the teacher for the day.

**Guided Learning** is the day your child will complete work assigned by the teacher, go online for lessons with the TA, and have options to meet with the teacher during the day. Your child also may meet with Resource Teachers on this day. Junior high students will check in with their faculty advisor.

# September 2020

Sunday	Monday	Tuesday	Wednesday	Thursday	Friday	Saturday
		1 Group 1 Direct Instruction Group 2 Guided Learning	2 Group 2 Direct Instruction Group 1 Guided Learning	3 Group 1 Direct Instruction Group 2 Guided Learning	4 Group 2 Direct Instruction Group 1 Guided Learning	5
6	7 <b>NO SCHOOL - Labor Day</b>	8 Group 2 Direct Instruction Group 1 Guided Learning	9 Group 1 Direct Instruction Group 2 Guided Learning	10 Group 2 Direct Instruction Group 1 Guided Learning	11 Group 1 Direct Instruction Group 2 Guided Learning	12
13	14 Group 2 Direct Instruction Group 1 Guided Learning	15 Group 1 Direct Instruction Group 2 Guided Learning	16 Group 2 Direct Instruction Group 1 Guided Learning	17 Group 1 Direct Instruction Group 2 Guided Learning	18 Group 2 Direct Instruction Group 1 Guided Learning	19
20	21 Group 1 Direct Instruction Group 2 Guided Learning	22 Group 2 Direct Instruction Group 1 Guided Learning	23 Group 1 Direct Instruction Group 2 Guided Learning	24 Group 2 Direct Instruction Group 1 Guided Learning	25 Group 1 Direct Instruction Group 2 Guided Learning	26
27	28 Group 2 Direct Instruction Group 1 Guided Learning	29 Group 1 Direct Instruction Group 2 Guided Learning	30 Group 2 Direct Instruction Group 1 Guided Learning			

## REMINDERS

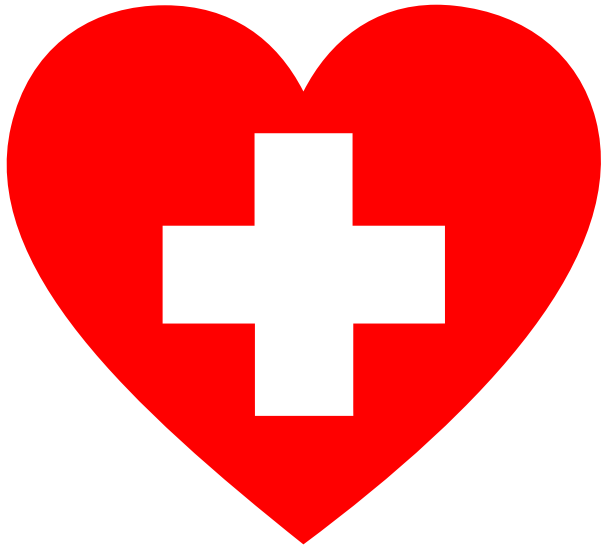
9/7 - NO SCHOOL

*The Lord bless you and keep you.*

NUM. 6:24



IN PARTNERSHIP WITH HUNTINGTON HOSPITAL



# FALCONS FIGHT THE FLU

FREE FLU SHOT CLINIC FOR THE  
ST. PHILIP COMMUNITY (WHILE SUPPLIES LAST)



OCTOBER 6, 2020

9 AM - 11 AM

SAINT PHILIP THE APOSTLE SCHOOL  
1363 Cordova Street, Pasadena 91106



**Sign-up is required.**

**Pre-register at:**

**<https://www.signupgenius.com/go/5080B4DA8A628AB9-free>**

# FREE COMMUNITY FLU SHOT CLINIC

## Requirements

- Sign up required:  
<https://www.signupgenius.com/go/5080B4DA8A628AB9-free>
- Please wear a face covering and abide by social distancing requirements
- Short sleeve or no-sleeve shirt
- Do not have any of the following symptoms: fever or chills, cough, congestion or runny nose, shortness of breath or have difficulty breathing, fatigue, muscle or body aches, headache, new loss of taste or smell, sore throat, nausea, vomiting, or diarrhea
- Not have suspected or confirmed COVID-19 infection
- At least 18 years old, or giving consent for your child, ages 9-17 years
- Not allergic to eggs or the influenza vaccine
- Not have a history of Guillain-Barre syndrome



**This event is a collaboration between Huntington Hospital and Saint Philip the Apostle School & Church.**

**For more info, please call the school: (626) 795 - 9691**

# THAT DATE DOESN'T WORK FOR YOU? NO WORRIES!

**You can receive your vaccination at any of  
these Huntington Hospital 2020  
FREE community flu shot clinics:**

Date	Time	Location
September 21	8:30 – 10:30 a.m.	<b>St. Joseph Center</b> ( <i>Holy Family Giving Bank</i> ) 1524 Fremont Ave., South Pasadena
September 23	8:30 – 10:30 a.m.	<b>South Pasadena Senior Center</b> 1102 Oxley St., South Pasadena
September 24	4 – 6:00 p.m.	<b>South Pasadena Farmer's Market</b> 905 Meridian Ave., South Pasadena
September 27 <b>Drive-Thru</b>	9 – noon	<b>Light of Love Mission Church</b> 2801 E. Colorado Blvd., Pasadena
September 29	9 – 11 a.m.	<b>Friends In Deed</b> 444 E. Washington Blvd., Pasadena
September 29 <b>Drive-Thru</b>	3 – 5 p.m.	<b>Hastings Branch Library</b> 3325 E. Orange Grove Blvd., Pasadena
September 30 <b>Drive-Thru</b>	3 – 5 p.m.	<b>Pasadena Central Library</b> 285 E. Walnut Street, Pasadena
October 3	8 – 10 a.m.	<b>Victory Park – Pasadena Farmers' Market</b> 2901 E. Sierra Madre Blvd., Pasadena (2900 Block of N. Sierra Madre Blvd. across from Pasadena High School)
October 4	9 – 11 a.m.	<b>Community Church at Holliston</b> ( <i>Dream Church</i> ) 1305 E. Colorado Blvd., Pasadena
October 6	9 – 11 a.m.	<b>St. Philip The Apostle School/Church</b> 1363 Cordova St., Pasadena
October 8	9 – 11 a.m.	<b>Altadena Senior Center</b> 560 E. Mariposa, Altadena
October 14 <b>Drive-Thru</b>	9 – 11 a.m.	<b>PAZ NAZ</b> ( <i>First Church of the Nazarene</i> ) 3700 E. Sierra Madre Blvd., Pasadena
October 20	9 – 11 a.m.	<b>Pasadena Senior Center</b> 85 E. Holly St., Pasadena
October 21	9 – 11 a.m.	<b>La Pintoresca Branch Library</b> 1355 N. Raymond Avenue, Pasadena



*There is a limited supply of vaccines for each clinic. All sites listed  
are open to the public. No reservation or appointment is required.*

**Huntington Hospital Community Outreach: (626) 397-3376 [www.huntingtonhospital.org/flu](http://www.huntingtonhospital.org/flu)**

---

**St. Philip The Apostle School  
Presents**

**Credit  
Cards only!**

**Wear a Mask!**



# **PUMPKIN PATCH**

---

**Raffle Tickets \* PUMPKINS**  
**FRIDAY, OCTOBER 23RD**  
**9:00 AM - 4:00 PM**

**St. Philip the Apostle School  
PUMPKIN PATCH 2020 SPONSOR  
October 23, 2020**

**Become a sponsor of the St. Philip Pumpkin Patch:**

- |                                                             |                                                               |
|-------------------------------------------------------------|---------------------------------------------------------------|
| <input type="checkbox"/> <b>\$25 Candy Sponsor</b>          | <input type="checkbox"/> <b>\$50 Tricks or Treats Sponsor</b> |
| <input type="checkbox"/> <b>\$75 Jack-O-Lantern Sponsor</b> | <input type="checkbox"/> <b>\$100 Kona Ice Truck Sponsor</b>  |
| <input type="checkbox"/> <b>\$ ____ Other Amount</b>        |                                                               |

**All Sponsorships will go towards supporting this fun day at the Pumpkin Patch,  
including the Kona Ice Truck and other Halloween festivities!**

**All sponsors will be acknowledged on signage prominently displayed at the Pumpkin Patch, our web site,  
St. Philip the Apostle Church Newsletter, and in the school newsletter.  
*We invite you to support our school in this way.***

**Payment Method:**

By check, payable to St. Philip the Apostle School. Checks can be mailed or dropped off in the school office.

Or

Donate online from the St. Philip the Apostle School website. Go to [www.stphiliptheapostle.org/school](http://www.stphiliptheapostle.org/school) and select **Giving** and **Donate Now**. Make sure you designate "Pumpkin Patch 2020 Sponsor" in the Donation Category.

***All gifts are tax deductible (Tax ID# 95-1831084); sponsors will be acknowledged at the Fall Festival.***

Please make a note if you wish to remain anonymous.

Please contact Tricia Ortega, Development Director, if you have any questions.  
(626) 795-9691 ext. 449 or [tortega@stphiliptheapostle.org](mailto:tortega@stphiliptheapostle.org)

***Thank you for supporting St. Philip the Apostle School!***





## **2020-2021 Scheduled Days Off and Early Dismissals**

September 7 – Labor Day – No School

October 23 – No School

November 11 - Veterans Day - No School

November 23-27 – Thanksgiving Break – No School

December 10 – Parent/Teacher Conferences - Early Dismissal 12:30

December 11 – Parent/Teacher Conferences – No School

December 18 – January 4 – Christmas Break – No School

January 18 – Martin Luther King Day – No School

January 25 – No School

February 15 – Presidents’ Day – No School

March 19 – No School

April 1 – Holy Thursday – Early Dismissal 12:30

April 2-11 – Easter Break

May 7 – Grandparents/Special Friends Day – Early Dismissal 11:00

May 31 – Memorial Day – No School

June 11 – Eight Grade Graduation – Early Dismissal 12:00

June 15 – Early Dismissal 12:30

June 16 – Last Day of School – Early Dismissal 10:30

\*\*\*All dates subject to change\*\*\*