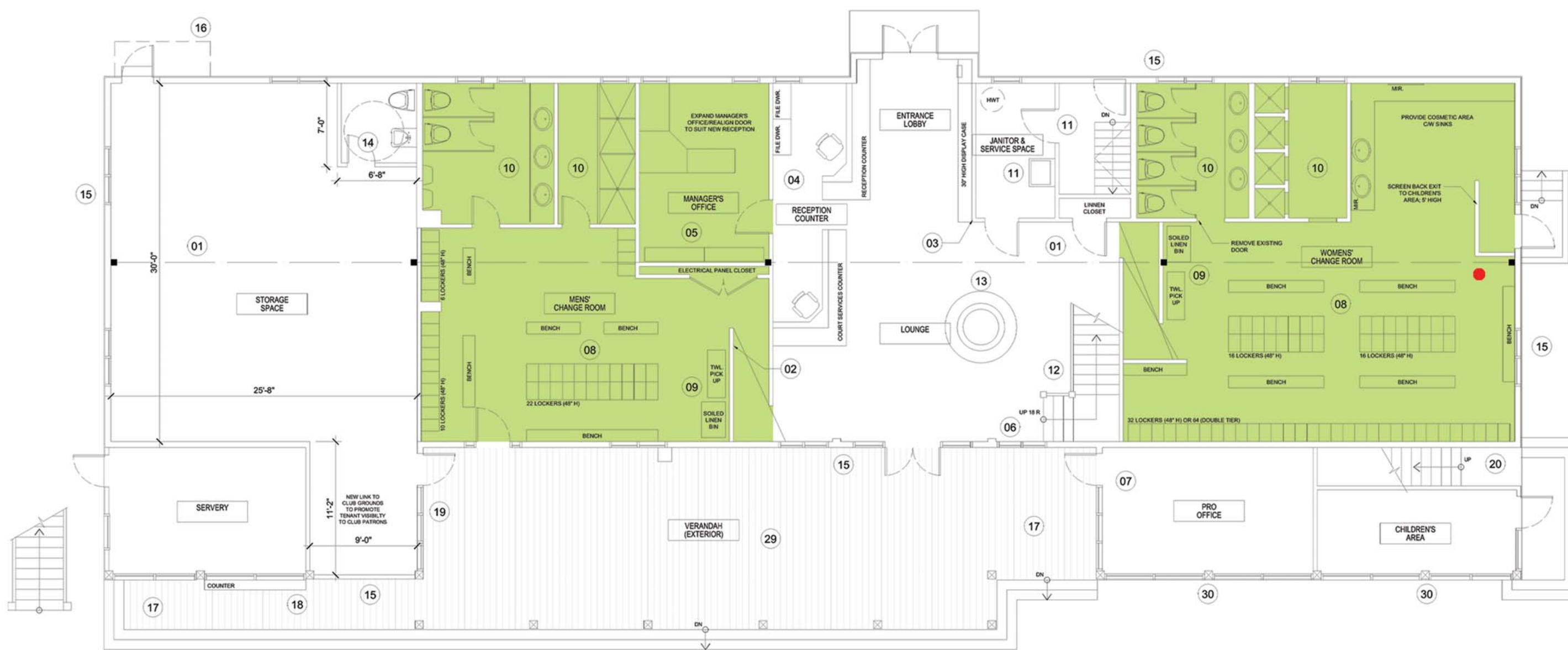


THE OTTAWA TENNIS CLUB RESTORATION CONCEPT



LEGEND: 8- IMPROVE FLOW PATTERNS IN CHANGE AREAS BY ELIMINATING DEAD-ENDS & REDUCING LOCKER QUANTITIES.
9- INTRODUCE TRANSITION SPACES AT CHANGE AREA ENTRIES FOR LINEN PICK-UP / DISPOSAL BINS;
10- PROVIDE ALL NEW, DURABLE FINISHES & LOW-FLOW PLUMBING FIXTURES.

The concept will see the complete overhaul of the men's and women's change spaces into a more easily navigable area by reducing locker heights, streamlining locker placement, and increasing free spans in the building structure.

Centralized linen pick-up and disposal galleys, and in the women's change room, a dedicated make-up area with basins, will offer a spa feel.

Brighter, more durable finishes will be used along with natural wood finishes where appropriate to augment the hospitality character of the new space.

And, new screening mazes will permit easy flow into private areas without the use of doors but also provide privacy where the current facility falls short.

PROPOSED CHANGE ROOMS

