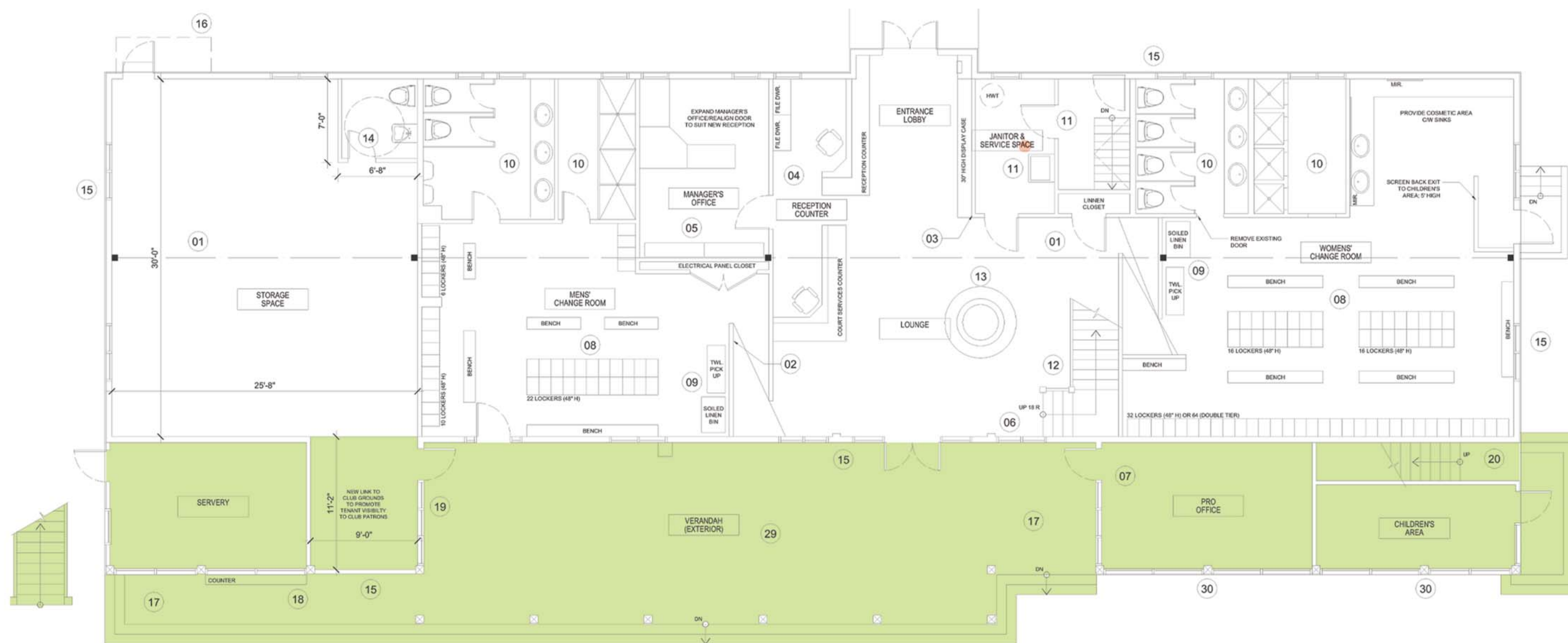


THE OTTAWA TENNIS CLUB RESTORATION CONCEPT



LEGEND: 07- SHIFT THE PRO OFFICE TO OPEN VIEWS TOWARDS THE COURTS; 15- REPLACE WINDOWS AND DOORS; 17- EXTEND THE DECK TOWARDS THE NEW SERVERY; 18- PROVIDE A NEW CONCESSION COUNTER; 19- NEW WINDOWS AND DOOR TO STORAGE/PROGRAM SPACE; 29- NEW CEDAR SOFFIT; 30- NEW OPERABLE WINDOWS

As a restoration, maintaining the original character of this 1920s building is paramount. A chief step in this direction is the introduction of a wood balcony guard, which is more in keeping with the original design.

Members will have the benefit of accessing the upper restaurant and balcony directly from the pool/volleyball walkway with the introduction of a new exterior stair. It will also serve as a communication stair between the kitchen and the new ice-cream and drink servery to be located below.

The existing exterior stair near courts 1-4 will be reversed to offer a more direct access to the children's play area, camp office and courts.

Lastly, the door and window configuration of the pro office will be mirrored on the opposite side of the veranda to provide access to a renovated club program space. This symmetry and the introduction of a new cedar soffit above the veranda will create a more attractive space from which to sit and admire matches.

PROPOSED EXTERIOR IMPROVEMENTS

